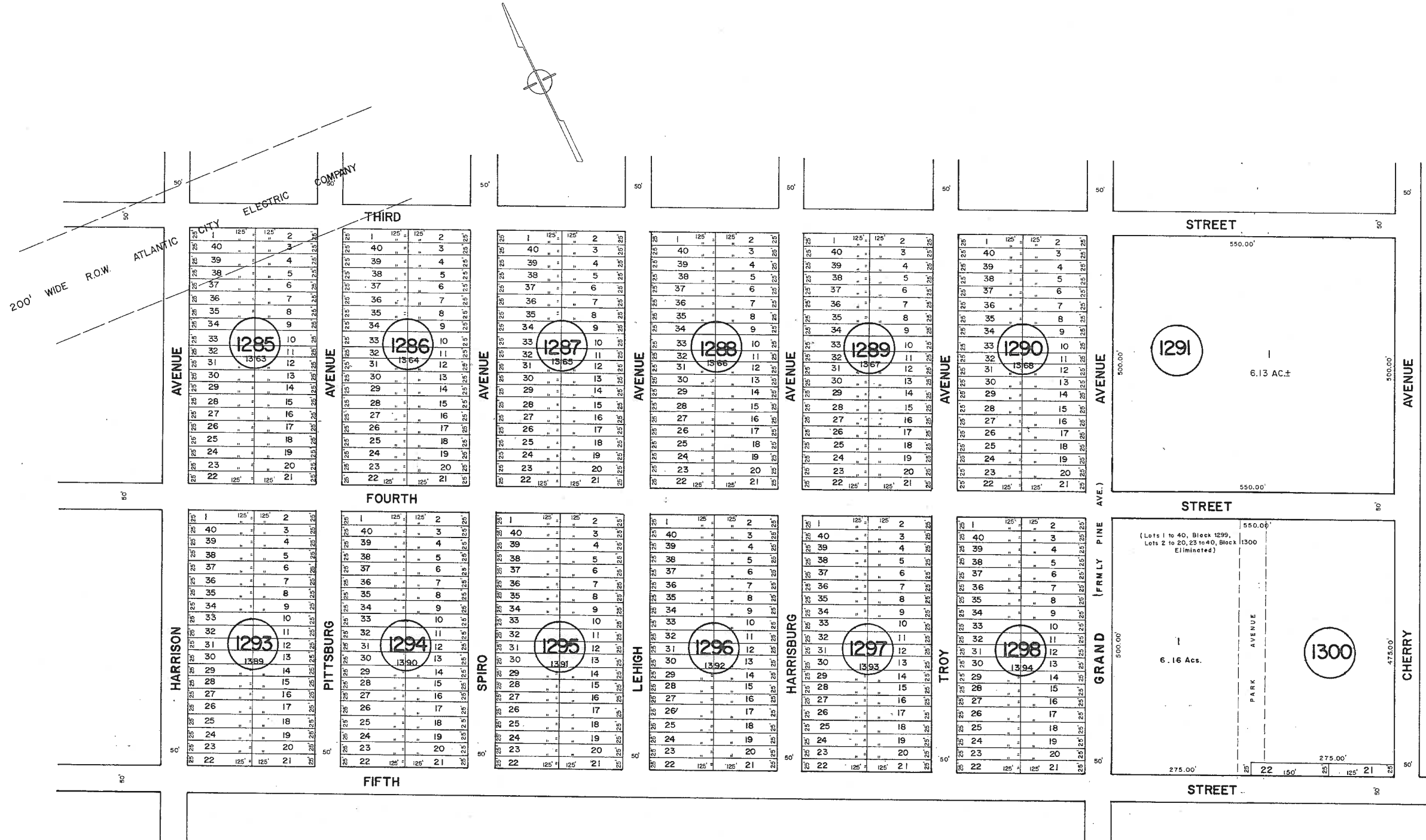


See Adjoining Sheet 48.03

See Adjoining Sheet 48.05

See Adjoining Sheet 48



NEW JERSEY DEPARTMENT OF THE TREASURY
 DIVISION OF TAXATION
 LOCAL PROPERTY AND PUBLIC UTILITY BRANCH
 APPROVED AS A TAX MAP PURSUANT TO THE
 PROVISIONS OF CHAPTER 175, LAWS OF 1913, ETC.
 FOR THE DIRECTOR, DIVISION OF TAXATION

John J. Heston
 BY: P.E. & L.S.
 LIC. #15434 CHIEF, ENGINEERING SECTION
 DATE: JAN 22 1986 SERIAL NO. 884

NEW JERSEY DEPARTMENT OF THE TREASURY
 DIVISION OF TAXATION
 LOCAL PROPERTY AND PUBLIC UTILITY BRANCH
 APPROVED AS A TAX MAP PURSUANT TO THE
 PROVISIONS OF CHAPTER 175, LAWS OF 1913, ETC.
 FOR THE DIRECTOR, DIVISION OF TAXATION

Ronald J. Price
 BY: P.E. & L.S.
 LIC. # 5009 CHIEF
 DATE: MAR 18 1986 SERIAL NO. 573

TAX MAP
 TOWNSHIP OF HAMILTON
 ATLANTIC COUNTY, NEW JERSEY
 SCALE: 1" = 100' DATE: JUNE 1, 1977

RONALD J. PRICE
 PLEASANTVILLE, N.J.
 N.J. LICENSE NO. 12001

REV. BY ALEXANDER M. CHURCHILL ASSOC.-JAN.'95
 REVISED BY RVW ENG. TO OCT.2008

See Adjoining Sheet 48

REVISED BY CHURCHILL - MAY 2002