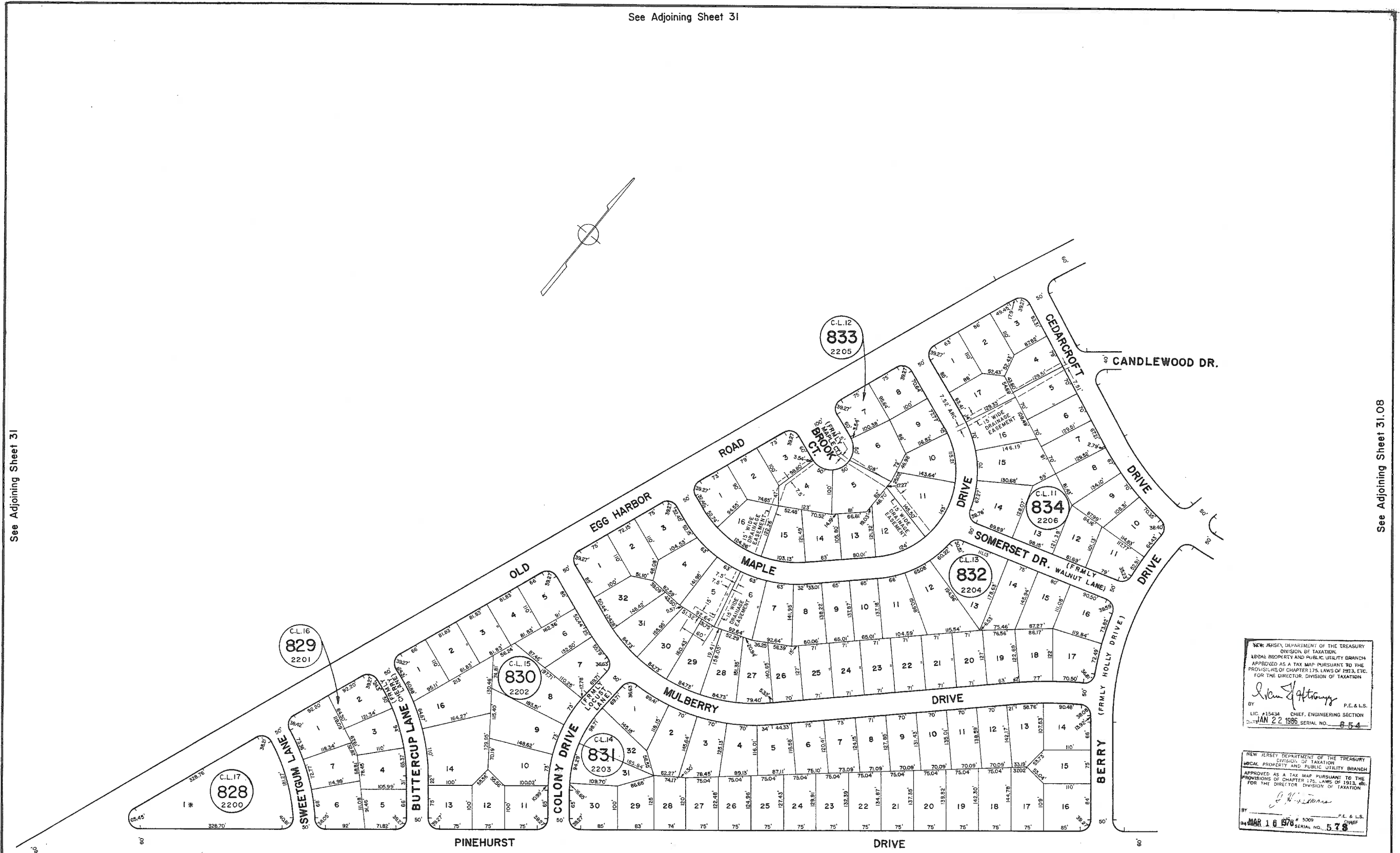


See Adjoining Sheet 31

See Adjoining Sheet 31

See Adjoining Sheet 31.08



NEW JERSEY DEPARTMENT OF THE TREASURY
 DIVISION OF TAXATION
 LOCAL PROPERTY AND PUBLIC UTILITY BRANCH
 APPROVED AS A TAX MAP PURSUANT TO THE
 PROVISIONS OF CHAPTER 175, LAWS OF 1913, ETC.
 FOR THE DIRECTOR, DIVISION OF TAXATION
Ronald J. Price
 BY P.E. & L.S.
 LIC. #15434 CHIEF, ENGINEERING SECTION
 DATE JAN 22 1996 SERIAL NO. 854

NEW JERSEY DEPARTMENT OF THE TREASURY
 DIVISION OF TAXATION
 LOCAL PROPERTY AND PUBLIC UTILITY BRANCH
 APPROVED AS A TAX MAP PURSUANT TO THE
 PROVISIONS OF CHAPTER 175, LAWS OF 1913, ETC.
 FOR THE DIRECTOR, DIVISION OF TAXATION
Ronald J. Price
 BY P.E. & L.S.
 LIC. #15434 CHIEF, ENGINEERING SECTION
 DATE MAR 16 1976 SERIAL NO. 578

NOTE: LETTERS "C.L." INDICATES NUMBER ON MAP OF CLOVERLEAF LAKES - SECTION NO. 2
 * EXEMPT TOWNSHIP OF HAMILTON

TAX MAP
TOWNSHIP OF HAMILTON
 ATLANTIC COUNTY, NEW JERSEY
 SCALE: 1" = 100' DATE: JUNE 1, 1977

RONALD J. PRICE
 PLEASANTVILLE, N.J.
 N.J. LICENSE NO. 13901

See Adjoining Sheet 38

REV. BY CHURCHILL - FEB. 2008
 REV. BY ALEXANDER M. CHURCHILL ASSOC. - JAN. '95
 WPHA 5-9-85
 REVISIONS