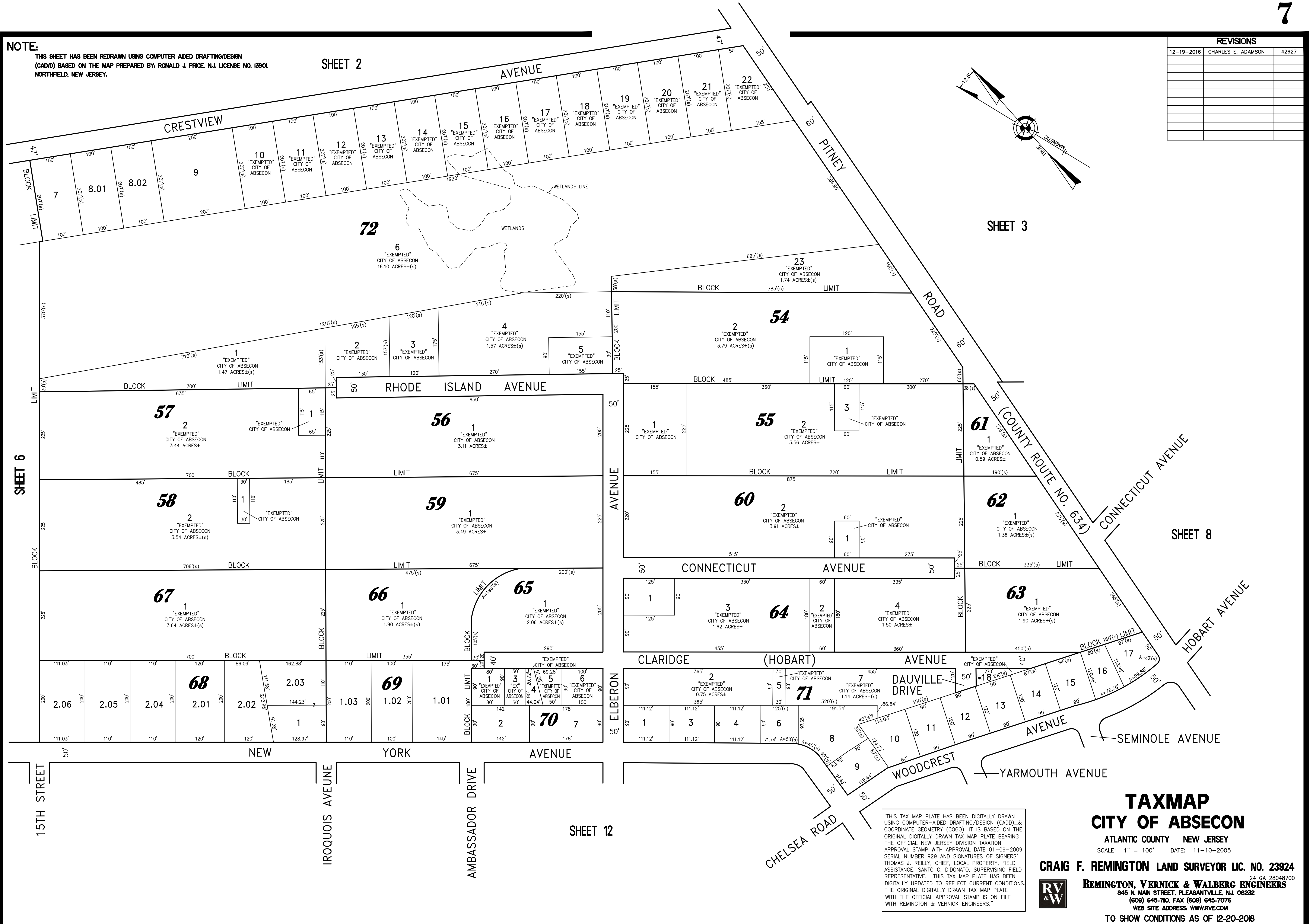
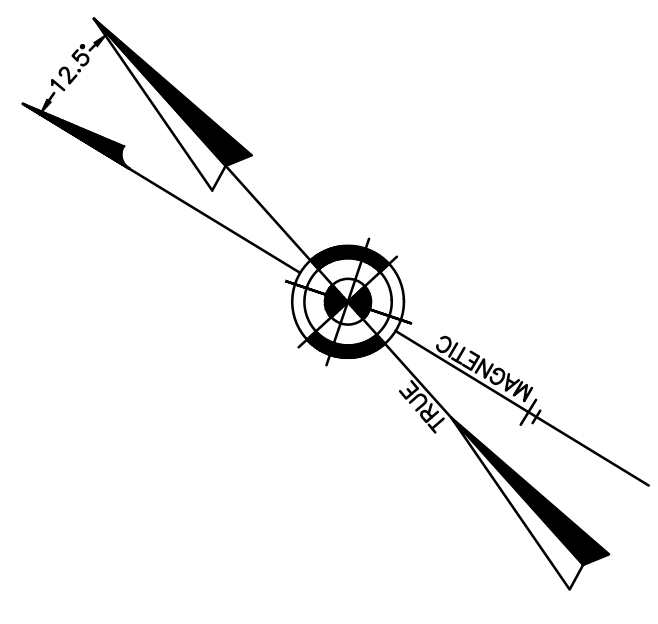


NOTE:
 THIS SHEET HAS BEEN REDRAWN USING COMPUTER AIDED DRAFTING/DESIGN (CADD) BASED ON THE MAP PREPARED BY RONALD J. PRICE, N.J. LICENSE NO. 13901 NORTHFIELD, NEW JERSEY.

SHEET 2



REVISIONS		
12-19-2016	CHARLES E. ADAMSON	42627



CRESTVIEW AVENUE
 PITNEY ROAD
 RHODE ISLAND AVENUE
 CONNECTICUT AVENUE
 CLARIDGE (HOBART) AVENUE
 NEW YORK AVENUE
 ELBERON AVENUE
 SEMINOLE AVENUE
 HOBBART AVENUE
 YARMOUTH AVENUE
 WOODCREST AVENUE
 CHELSEA ROAD
 IROQUOIS AVENUE
 AMBASSADOR DRIVE
 15TH STREET

WETLANDS LINE
 WETLANDS

72
 6 "EXEMPTED" CITY OF ABSECON 16.10 ACRES±(s)

7
 8.01
 8.02
 9
 10 "EXEMPTED" CITY OF ABSECON 207'(s)
 11 "EXEMPTED" CITY OF ABSECON 207'(s)
 12 "EXEMPTED" CITY OF ABSECON 207'(s)
 13 "EXEMPTED" CITY OF ABSECON 207'(s)
 14 "EXEMPTED" CITY OF ABSECON 207'(s)
 15 "EXEMPTED" CITY OF ABSECON 207'(s)
 16 "EXEMPTED" CITY OF ABSECON 207'(s)
 17 "EXEMPTED" CITY OF ABSECON 207'(s)
 18 "EXEMPTED" CITY OF ABSECON 207'(s)
 19 "EXEMPTED" CITY OF ABSECON 207'(s)
 20 "EXEMPTED" CITY OF ABSECON 207'(s)
 21 "EXEMPTED" CITY OF ABSECON 207'(s)
 22 "EXEMPTED" CITY OF ABSECON 207'(s)

23 "EXEMPTED" CITY OF ABSECON 1.74 ACRES±(s)

2
 3
 4 "EXEMPTED" CITY OF ABSECON 1.57 ACRES±(s)
 5 "EXEMPTED" CITY OF ABSECON 1.55 ACRES±(s)

2
 3
 1 "EXEMPTED" CITY OF ABSECON 3.79 ACRES±(s)

1 "EXEMPTED" CITY OF ABSECON 1.47 ACRES±(s)

2 "EXEMPTED" CITY OF ABSECON 3.44 ACRES±(s)

1 "EXEMPTED" CITY OF ABSECON 3.11 ACRES±(s)

1
 2 "EXEMPTED" CITY OF ABSECON 3.54 ACRES±(s)

1 "EXEMPTED" CITY OF ABSECON 3.49 ACRES±(s)

1
 2 "EXEMPTED" CITY OF ABSECON 3.91 ACRES±(s)

1
 2 "EXEMPTED" CITY OF ABSECON 3.56 ACRES±(s)

1 "EXEMPTED" CITY OF ABSECON 0.59 ACRES±(s)

1 "EXEMPTED" CITY OF ABSECON 1.36 ACRES±(s)

1
 2 "EXEMPTED" CITY OF ABSECON 3.64 ACRES±(s)

1 "EXEMPTED" CITY OF ABSECON 1.90 ACRES±(s)

1 "EXEMPTED" CITY OF ABSECON 2.06 ACRES±(s)

1
 2 "EXEMPTED" CITY OF ABSECON 1.62 ACRES±(s)

2 "EXEMPTED" CITY OF ABSECON 3.91 ACRES±(s)

1 "EXEMPTED" CITY OF ABSECON 1.50 ACRES±(s)

1 "EXEMPTED" CITY OF ABSECON 1.90 ACRES±(s)

1
 2
 3
 4
 5
 6
 7
 8
 9
 10
 11
 12
 13
 14
 15
 16
 17
 18 "EXEMPTED" CITY OF ABSECON 0.75 ACRES±(s)

1
 2
 3
 4
 5
 6
 7
 8
 9
 10
 11
 12
 13
 14
 15
 16
 17
 18 "EXEMPTED" CITY OF ABSECON 1.14 ACRES±(s)

2.06
 2.05
 2.04
 2.01
 2.02
 2.03
 1.03
 1.02
 1.01

1
 2
 3
 4
 5
 6
 7
 8
 9
 10
 11
 12
 13
 14
 15
 16
 17
 18 "EXEMPTED" CITY OF ABSECON 1.14 ACRES±(s)

TAXMAP
CITY OF ABSECON

ATLANTIC COUNTY NEW JERSEY
 SCALE: 1" = 100' DATE: 11-10-2005

CRAIG F. REMINGTON LAND SURVEYOR LIC. NO. 23924

REMINGTON, VERNICK & WALBERG ENGINEERS
 24 GA 28048700
 945 N. MAIN STREET, PLEASANTVILLE, N.J. 08232
 (609) 645-7100, FAX (609) 645-7076
 WEB SITE ADDRESS: WWW.RVE.COM

TO SHOW CONDITIONS AS OF 12-20-2016

"THIS TAX MAP PLATE HAS BEEN DIGITALLY DRAWN USING COMPUTER-AIDED DRAFTING/DESIGN (CADD) & COORDINATE GEOMETRY (COGO). IT IS BASED ON THE ORIGINAL DIGITALLY DRAWN TAX MAP PLATE BEARING THE OFFICIAL NEW JERSEY DIVISION TAXATION APPROVAL STAMP WITH APPROVAL DATE 01-09-2009 SERIAL NUMBER 929 AND SIGNATURES OF SIGNERS' THOMAS J. REILLY, CHIEF, LOCAL PROPERTY, FIELD ASSISTANCE, SANTO C. DIDONATO, SUPERVISING FIELD REPRESENTATIVE. THIS TAX MAP PLATE HAS BEEN DIGITALLY UPDATED TO REFLECT CURRENT CONDITIONS. THE ORIGINAL DIGITALLY DRAWN TAX MAP PLATE WITH THE OFFICIAL APPROVAL STAMP IS ON FILE WITH REMINGTON & VERNICK ENGINEERS."