

See Adjoining Sheet 46

See Adjoining Sheet 46.02

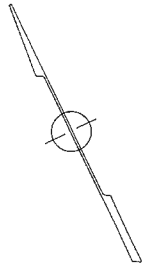
TAX MAP
TOWNSHIP OF HAMILTON
 ATLANTIC COUNTY, NEW JERSEY
 SCALE: 1" = 50'
 DATE: JUNE 1, 1977

RONALD J. PRICE
 PLEASANTVILLE, N.J.
 N.J. LICENSE NO. 13901

SEE CONDO INDEX I FOR AREA DATA

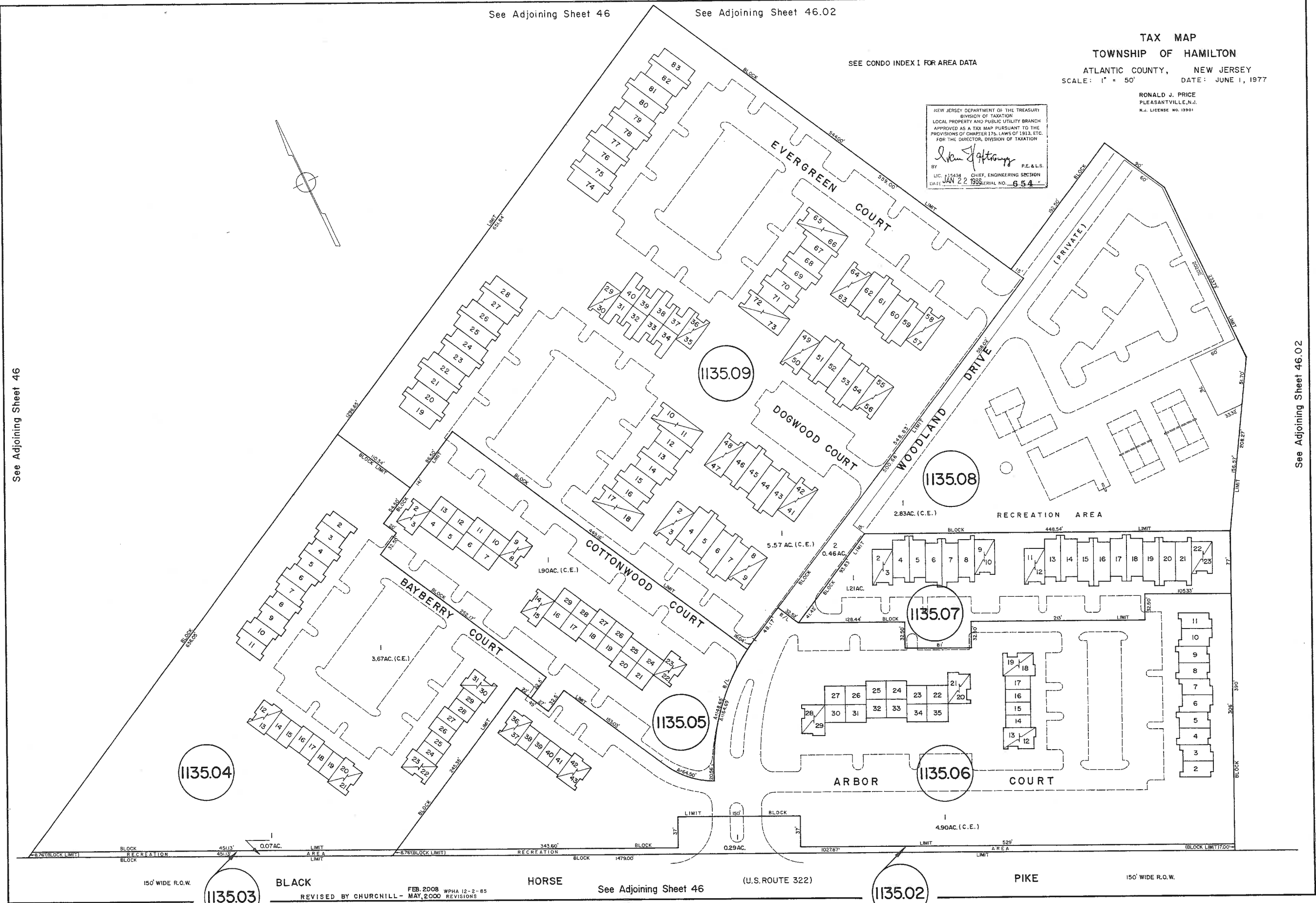
NEW JERSEY DEPARTMENT OF THE TREASURY
 DIVISION OF TAXATION
 LOCAL PROPERTY AND PUBLIC UTILITY BRANCH
 APPROVED AS A TAX MAP PURSUANT TO THE
 PROVISIONS OF CHAPTER 176, LAWS OF 1913, ETC.
 FOR THE DIRECTOR, DIVISION OF TAXATION

Ronald J. Price
 BY: P.E. & L.S.
 LIC. # 15434 CHIEF, ENGINEERING SECTION
 DATE: JAN 22 1998 SERIAL NO. 654



See Adjoining Sheet 46

See Adjoining Sheet 46.02



1135.03

1135.02

BLACK
 FEB. 2008 WPHA 12-2-85
 REVISED BY CHURCHILL - MAY, 2000 REVISIONS

See Adjoining Sheet 46