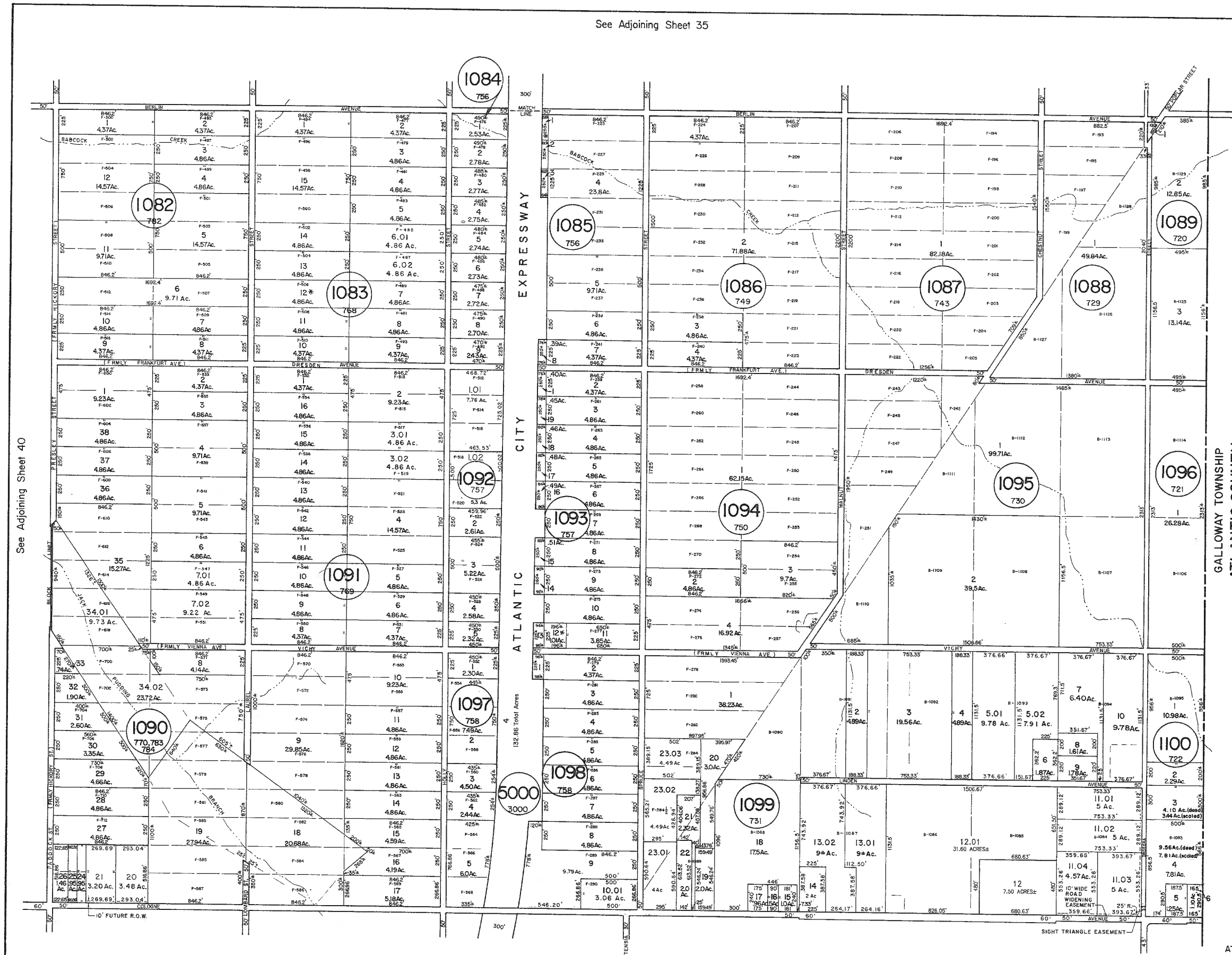


See Adjoining Sheet 35

REVISIONS		
5/26/97	KENNETH P. FRANK	L.S. 36727
6/20/97	KENNETH P. FRANK	L.S. 36727
8/3/2010	CRAIG F. REMINGTON	L.S. 23924
REVISIONS		
7-16-92	WPHA	7-16-92
11-8-93	WPHA	11-8-93
9-3-96	WPHA	9-3-96



See Adjoining Sheet 40

GALLOWAY TOWNSHIP
ATLANTIC COUNTY

NEW JERSEY DEPARTMENT OF THE TREASURY
DIVISION OF TAXATION
LOCAL PROPERTY AND PUBLIC UTILITY BRANCH
APPROVED AS A TAX MAP PURSUANT TO THE
PROVISIONS OF CHAPTER 125, LAWS OF 1913, ETC.
FOR THE DIRECTOR, DIVISION OF TAXATION

John J. Anthony P.E. & L.S.
LIC. #15434 CHIEF ENGINEERING SECTION
DATE JAN 22 1986 SERIAL NO. 654

NEW JERSEY DEPARTMENT OF THE TREASURY
DIVISION OF TAXATION
LOCAL PROPERTY AND PUBLIC UTILITY BRANCH
APPROVED AS A TAX MAP PURSUANT TO THE
PROVISIONS OF CHAPTER 125, LAWS OF 1913, ETC.
FOR THE DIRECTOR, DIVISION OF TAXATION

[Signature] P.E. & L.S.
DATE JAN 22 1986 SERIAL NO. 654

TAX MAP
TOWNSHIP OF HAMILTON
ATLANTIC COUNTY, NEW JERSEY
SCALE: 1" = 400'
DATE: JUNE 1, 1997

NOTE: LETTER "F" INDICATES NUMBERS ON MAP OF WEST EGG HARBOR BY DANIEL B. FRAZIER COMPANY.
LETTER "B" INDICATES NUMBERS ON MAP OF GLOUCESTER FARM & TOWN ASSOCIATION.
* EXEMPT TOWNSHIP OF HAMILTON

See Adjoining Sheet 47

REV. BY CHURCHILL - FEB. 2008
REV. BY ALEXANDER M. CHURCHILL ASSOC. - JAN. '95

WPHA 10-11-88
WPHA 4-25-85
REVISIONS

RONALD J. PRICE
PLEASANTVILLE, N.J.
N.J. LICENSE NO. 15501