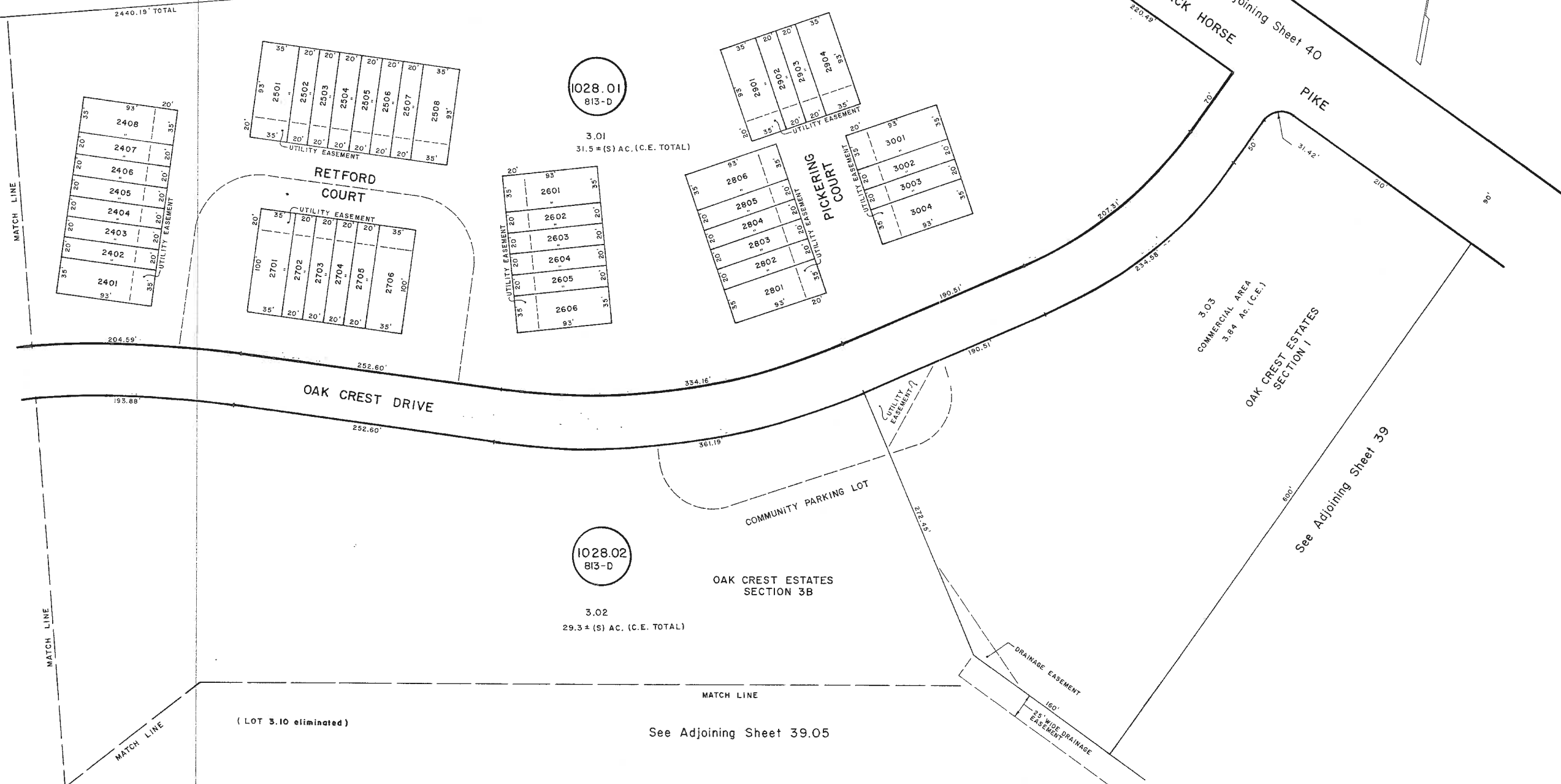
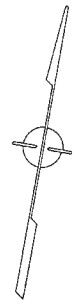


REVISIONS
WPHA 12-5-96

See Adjoining Sheet 39.06

See Adjoining Sheet 39

See Adjoining Sheet 40



1028.01
813-D

3.01
31.5 ± (S) AC. (C.E. TOTAL)

1028.02
813-D

3.02
29.3 ± (S) AC. (C.E. TOTAL)

(LOT 3.10 eliminated)

See Adjoining Sheet 39.05

NEW JERSEY DEPARTMENT OF THE TREASURY
DIVISION OF TAXATION
LOCAL PROPERTY AND PUBLIC UTILITY BRANCH
APPROVED AS A TAX MAP PURSUANT TO THE
PROVISIONS OF CHAPTER 175, LAWS OF 1913, ETC.
FOR THE DIRECTOR, DIVISION OF TAXATION

John R. Walker P.E. & L.S.
J.C. #15434 CHIEF, ENGINEERING SECTION
JAN 22 1986 SERIAL NO. 54

TAX MAP
TOWNSHIP OF HAMILTON
ATLANTIC COUNTY, NEW JERSEY
SCALE: 1" = 50'
MARCH 8, 1984

JOHN R. WALKER
OCEAN CITY, N. J.
N. J. LICENSE NO. 10294

REV. BY CHURCHILL - JAN. 2007

WPHA 12 - 2 - 85
REVISIONS