

REVISIONS
WPHA 10-25-91

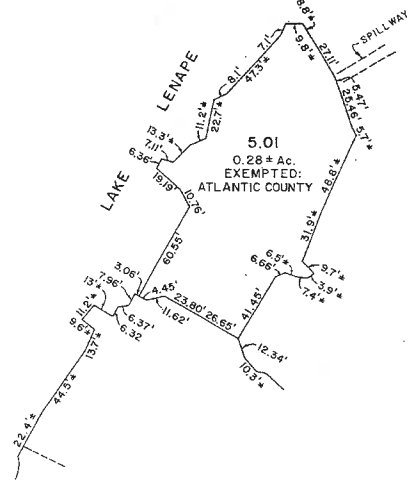
See Adjoining Sheet 28

See Adjoining Sheet 28.04

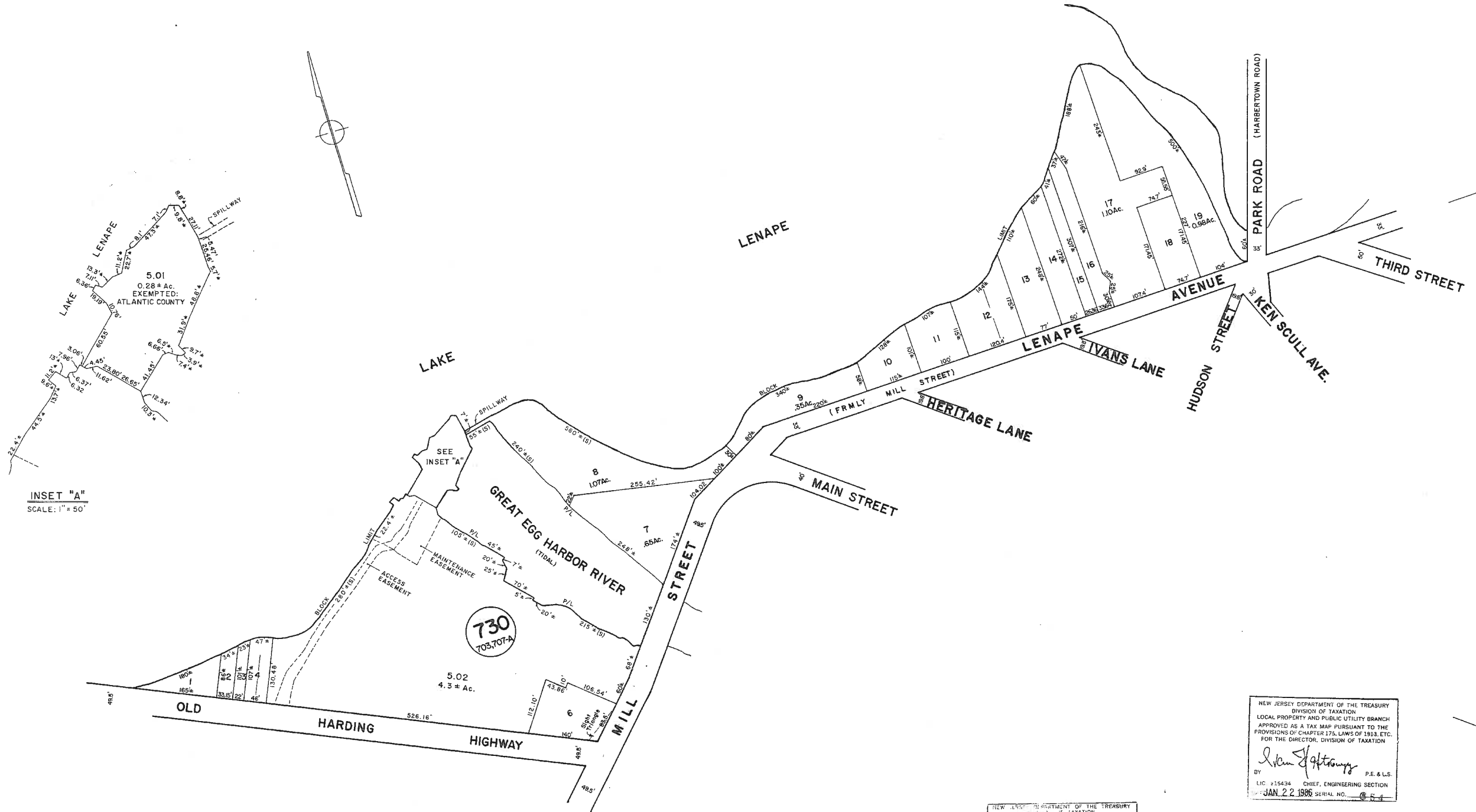
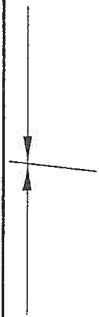
See Adjoining Sheet 28

See Adjoining Sheet 28.02

See Adjoining Sheet 31.01



INSET "A"
SCALE: 1" = 50'



NEW JERSEY DEPARTMENT OF THE TREASURY
DIVISION OF TAXATION
LOCAL PROPERTY AND PUBLIC UTILITY BRANCH
APPROVED AS A TAX MAP PURSUANT TO THE
PROVISIONS OF CHAPTER 175, LAWS OF 1913, ETC.
FOR THE DIRECTOR, DIVISION OF TAXATION

BY: *J. Price* P.E. & L.S.
DATE: **MAY 16 1980** CHIEF, ENGINEERING SECTION
SERIAL NO. **578**

NEW JERSEY DEPARTMENT OF THE TREASURY
DIVISION OF TAXATION
LOCAL PROPERTY AND PUBLIC UTILITY BRANCH
APPROVED AS A TAX MAP PURSUANT TO THE
PROVISIONS OF CHAPTER 175, LAWS OF 1913, ETC.
FOR THE DIRECTOR, DIVISION OF TAXATION

BY: *John J. Gattuso* P.E. & L.S.
DATE: **JAN 22 1980** CHIEF, ENGINEERING SECTION
SERIAL NO. **654**

TAX MAP
TOWNSHIP OF HAMILTON
ATLANTIC COUNTY, NEW JERSEY
SCALE: 1" = 100' DATE: JUNE 1, 1977

RONALD J. PRICE
PLEASANTVILLE, N.J.
N.J. LICENSE NO. 12901

REV. BY CHURCHILL - AUG. '99, FEB. 2008
REV. BY ALEXANDER M. CHURCHILL ASSOC. - JAN. '95

See Adjoining Sheet 30.02

See Adjoining Sheet 30.03