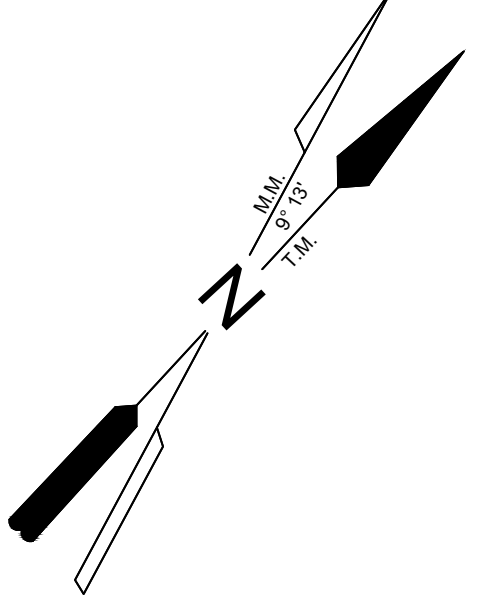
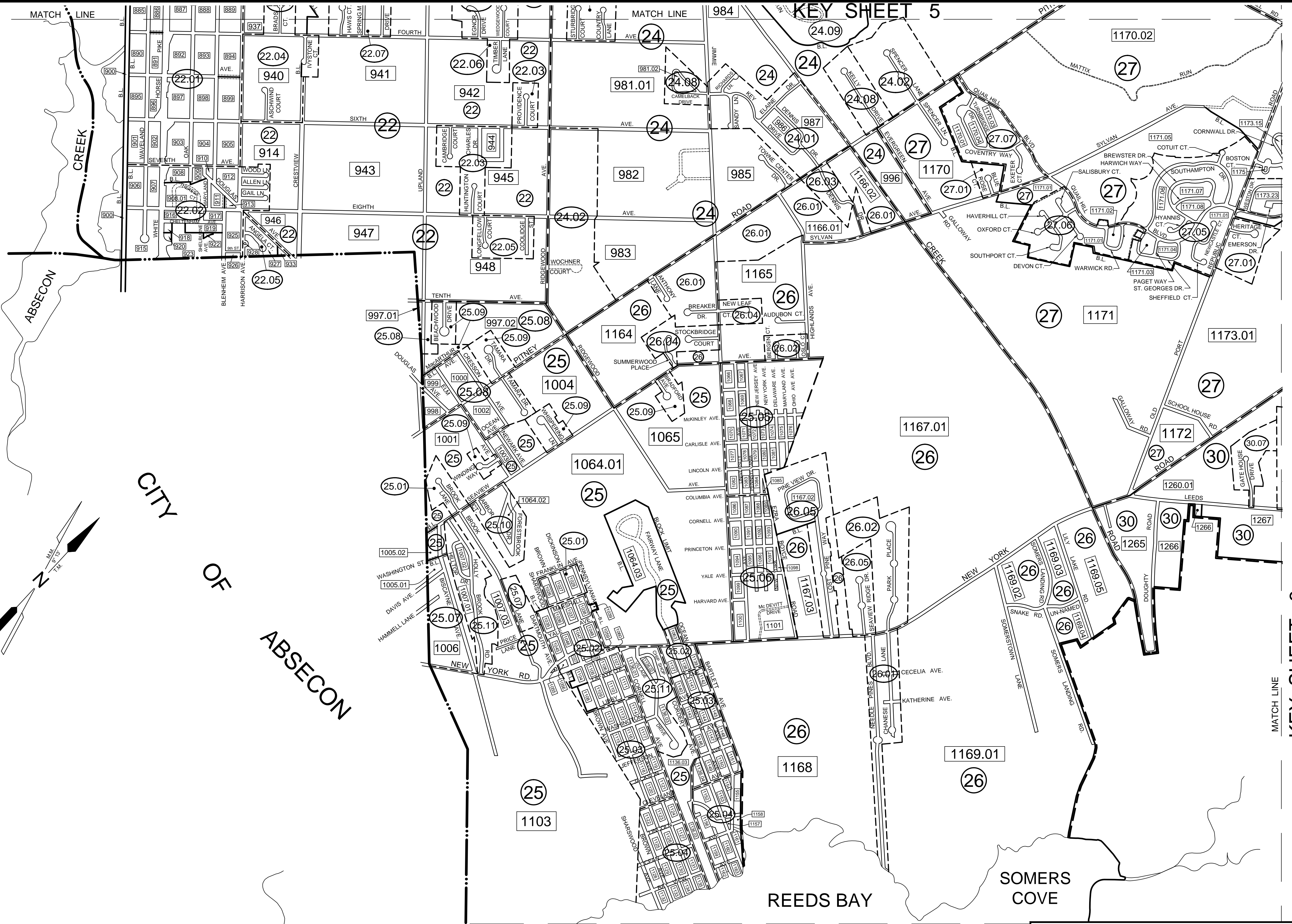


REVISIONS		
DATE	NAME	NO.
Aug. 2008	Dixon Assoc.	1

EGG HARBOR TOWNSHIP



**CERTIFICATION:**  
 "I hereby certify that this map has been made under my immediate supervision and complies with the laws of the State of New Jersey."  
*Samuel S. Previtera*  
 SAMUEL S. PREVITERA, P.L.S. N.J. LIC. No. 38976

THIS SHEET HAS BEEN DRAWN USING COMPUTER AIDED DRAFTING / DESIGN (CAD/D) AND WAS DONE UNDER THE SUPERVISION OF SAMUEL S. PREVITERA, P.L.S., NEW JERSEY PROFESSIONAL LAND SURVEYOR LICENSE NO. 38976, AND DATED DECEMBER 31, 2006.

**TAX MAP**  
 TOWNSHIP OF GALLOWAY  
 ATLANTIC COUNTY, NEW JERSEY  
 SCALE: 1" = 1000' JANUARY 2007  
 SAMUEL S. PREVITERA, P.L.S.  
 N.J. LIC. No. 38976  
 26 NORTH ROUTE 73, SUITE 200  
 CEDAR BROOK, N.J. 08018  
 TO SHOW CONDITIONS AS OF JANUARY 1, 2007

MATCH LINE KEY SHEET 8