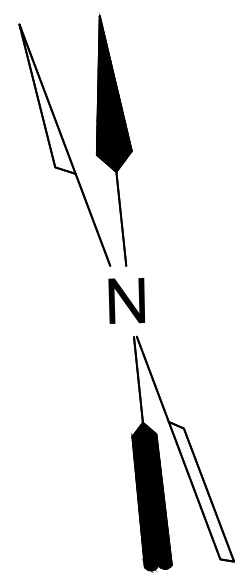
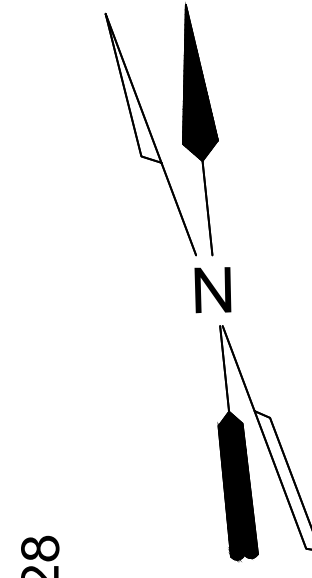
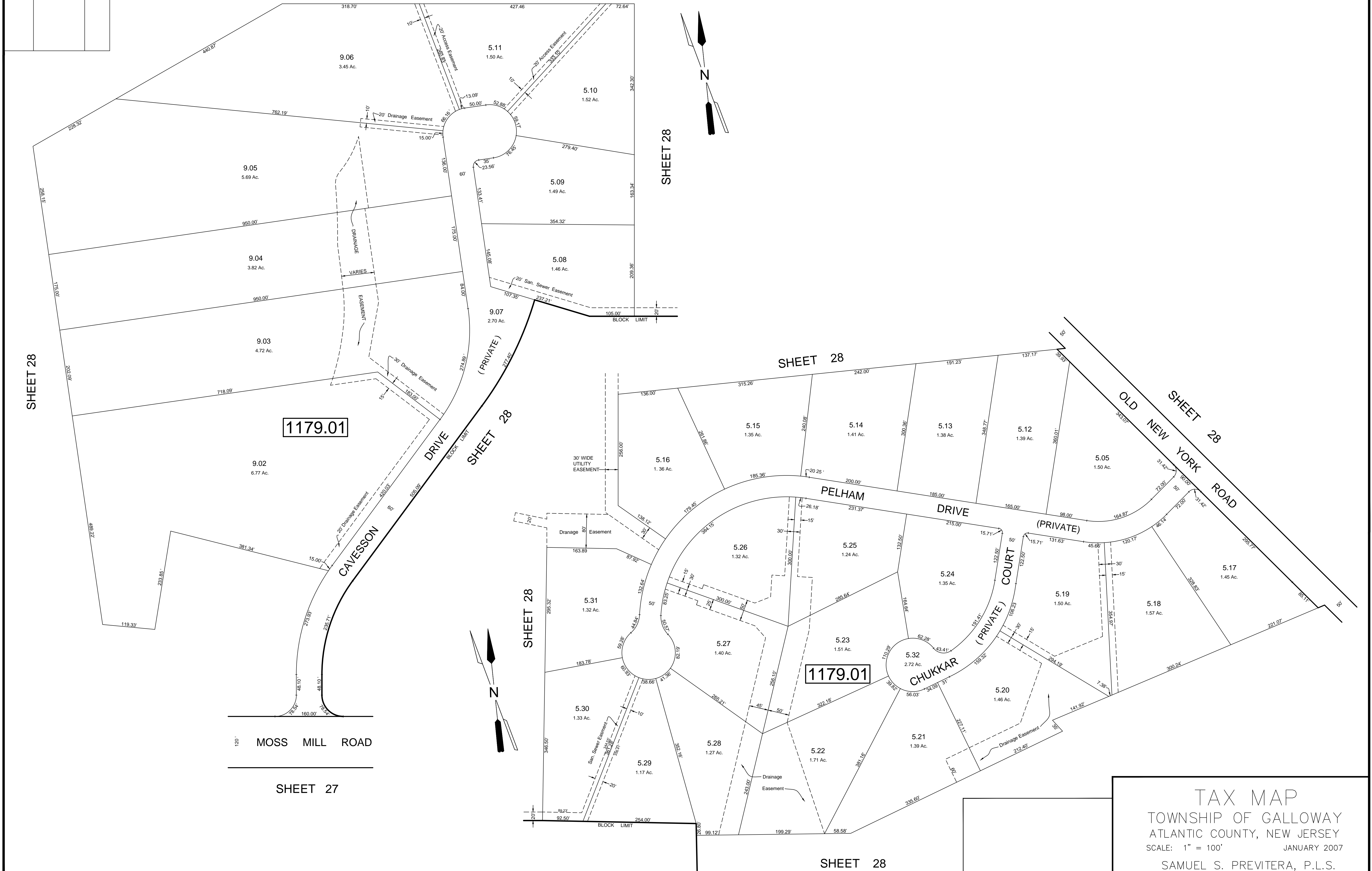


REVISIONS		
DATE	NAME	NO.

SHEET 28



TAX MAP
 TOWNSHIP OF GALLOWAY
 ATLANTIC COUNTY, NEW JERSEY
 SCALE: 1" = 100' JANUARY 2007
 SAMUEL S. PREVITERA, P.L.S.
 N.J. LIC. No. 38976
 26 NORTH ROUTE 73, SUITE 200
 CEDAR BROOK, N.J. 08018

THIS SHEET HAS BEEN DRAWN USING COMPUTER AIDED DRAFTING / DESIGN (CAD/D) AND WAS DONE UNDER THE SUPERVISION OF SAMUEL S. PREVITERA, P.L.S., NEW JERSEY PROFESSIONAL LAND SURVEYOR LICENSE NO. 38976, AND DATED DECEMBER 31, 2006.