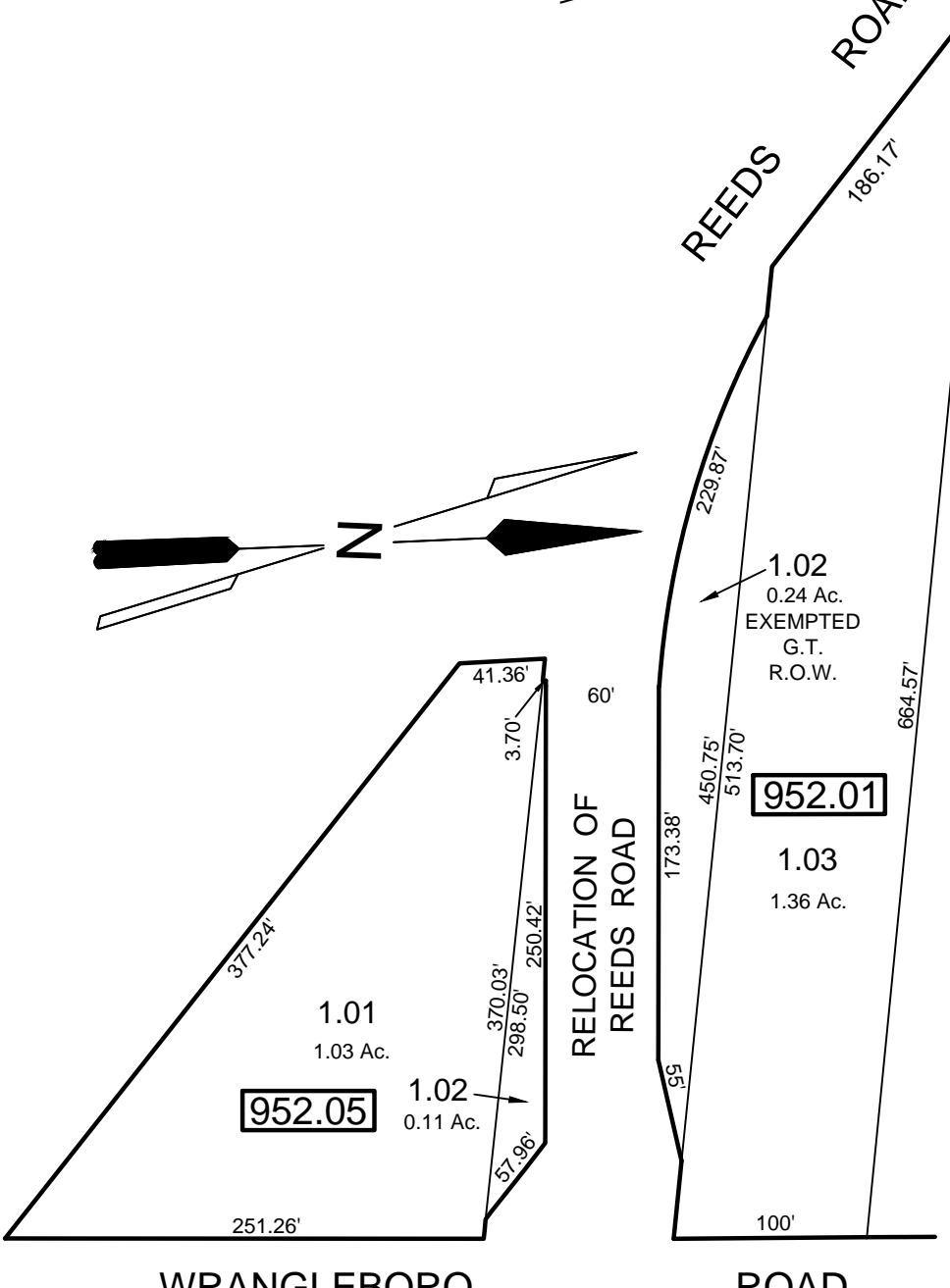
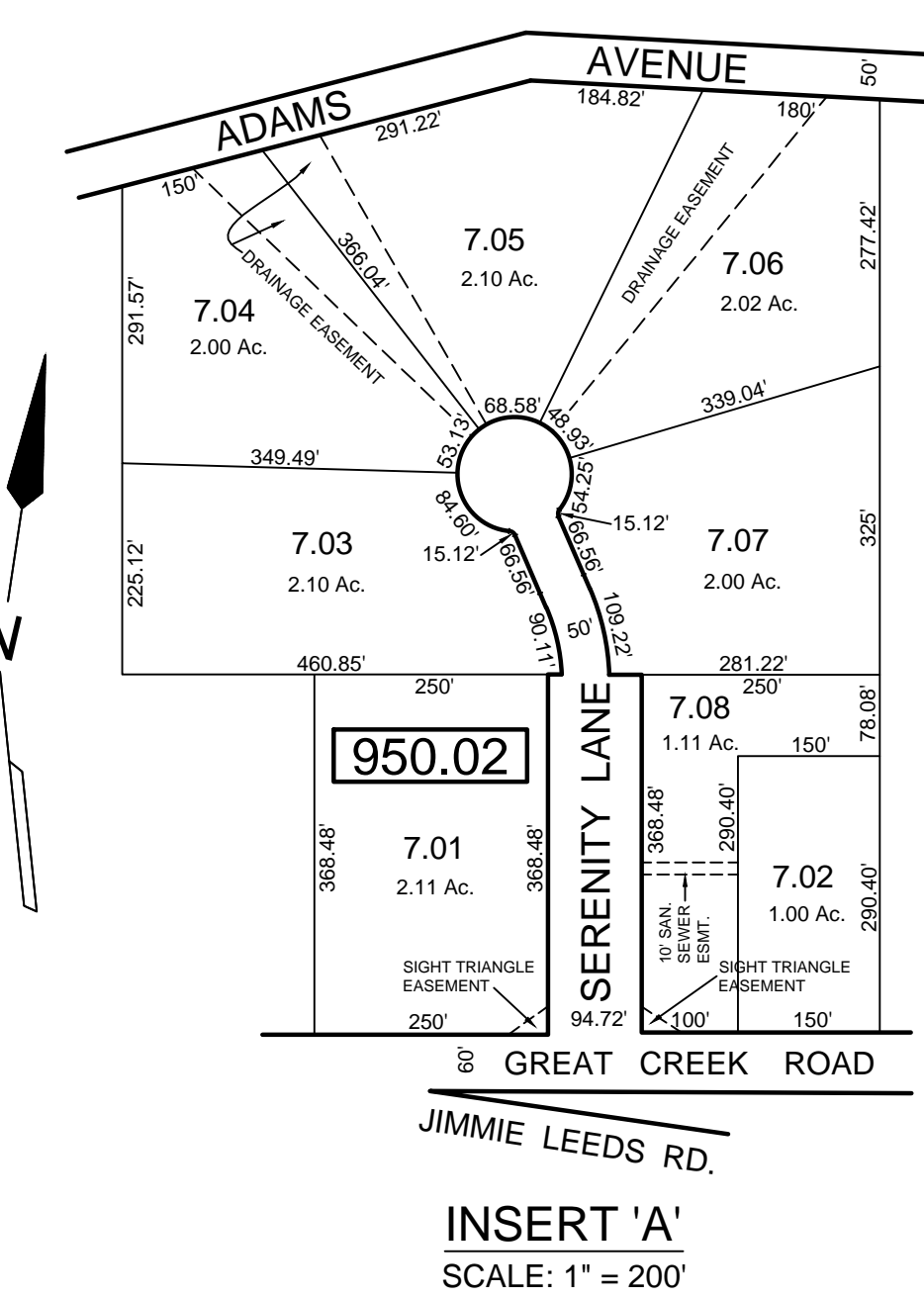
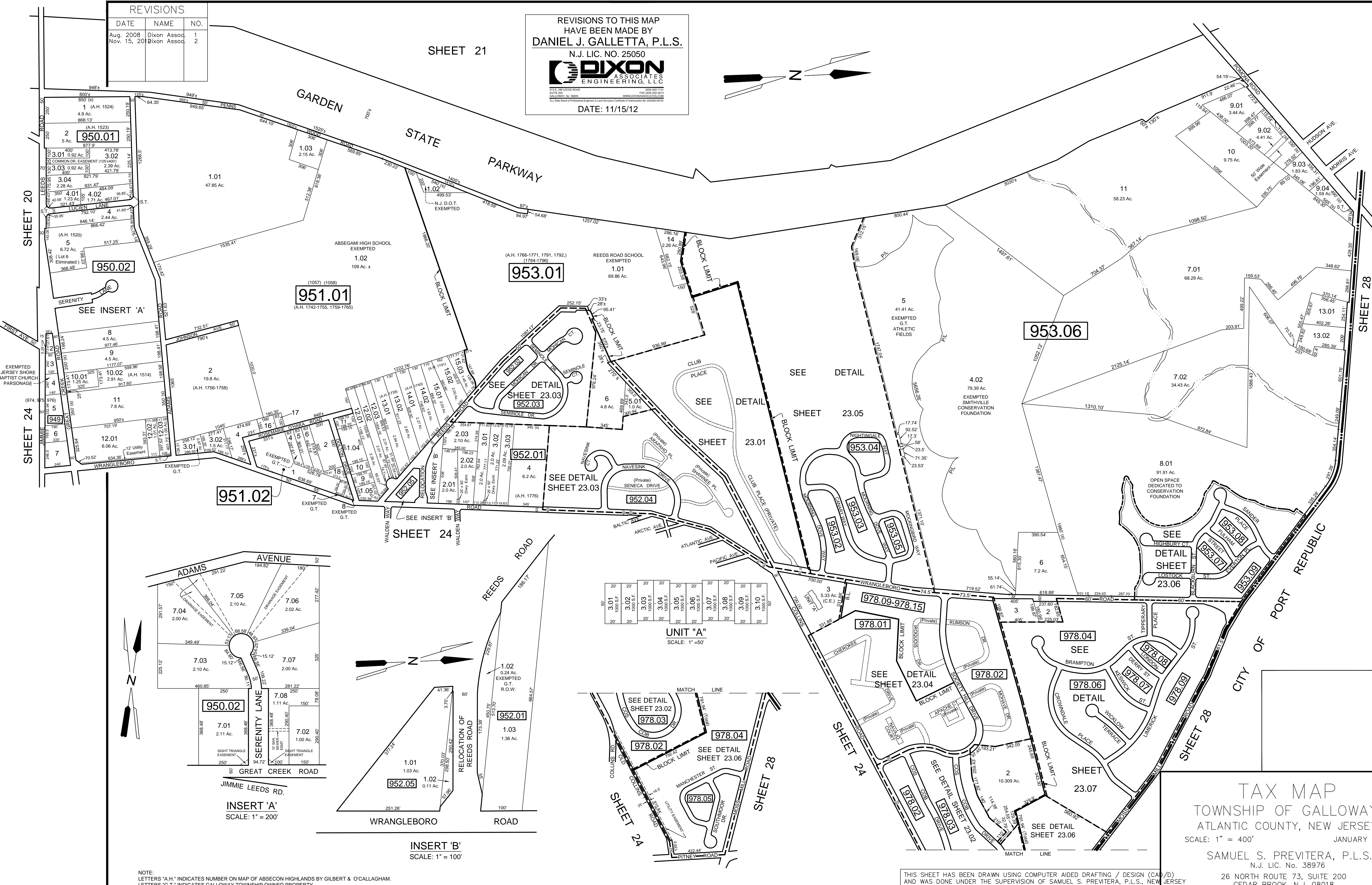
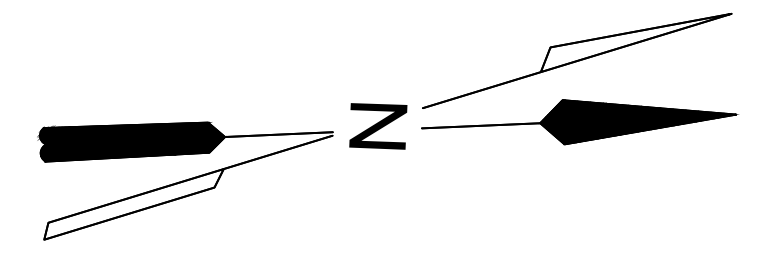


REVISIONS		
DATE	NAME	NO.
Aug. 2008	Dixon Assoc.	1
Nov. 15, 2010	Dixon Assoc.	2

REVISIONS TO THIS MAP
HAVE BEEN MADE BY
DANIEL J. GALLETTA, P.L.S.
N.J. LIC. NO. 25050
**DIXON ASSOCIATES
ENGINEERING, LLC**
DATE: 11/15/12



UNIT "A"									
3.01	3.02	3.03	3.04	3.05	3.06	3.07	3.08	3.09	3.10
1000 S.F.	1000 S.F.	1000 S.F.	1000 S.F.	1000 S.F.	1000 S.F.	1000 S.F.	1000 S.F.	1000 S.F.	1000 S.F.
20'	20'	20'	20'	20'	20'	20'	20'	20'	20'

TAX MAP
TOWNSHIP OF GALLOWAY
ATLANTIC COUNTY, NEW JERSEY
SCALE: 1" = 400' JANUARY 2007
SAMUEL S. PREVITERA, P.L.S.
N.J. LIC. NO. 38976
26 NORTH ROUTE 73, SUITE 200
CEDAR BROOK, N.J. 08018

NOTE:
LETTERS "A.H." INDICATES NUMBER ON MAP OF ABSECON HIGHLANDS BY GILBERT & O'CALLAGHAN.
LETTERS "G.T." INDICATES GALLOWAY TOWNSHIP OWNED PROPERTY.

THIS SHEET HAS BEEN DRAWN USING COMPUTER AIDED DRAFTING / DESIGN (CAD) AND WAS DONE UNDER THE SUPERVISION OF SAMUEL S. PREVITERA, P.L.S., NEW JERSEY PROFESSIONAL LAND SURVEYOR LICENSE NO. 38976, AND DATED DECEMBER 31, 2006.