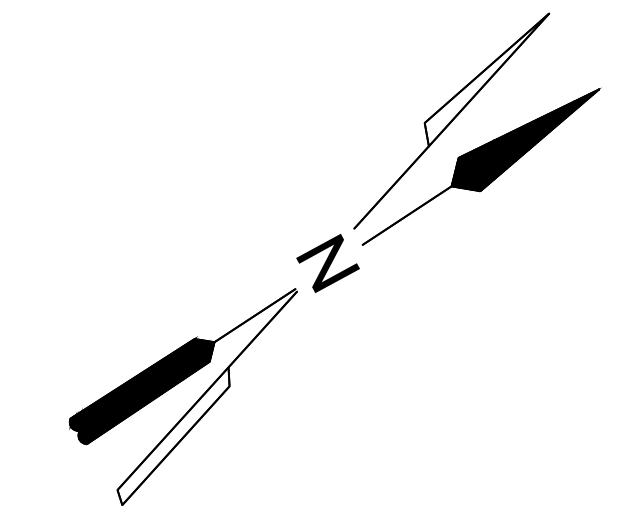
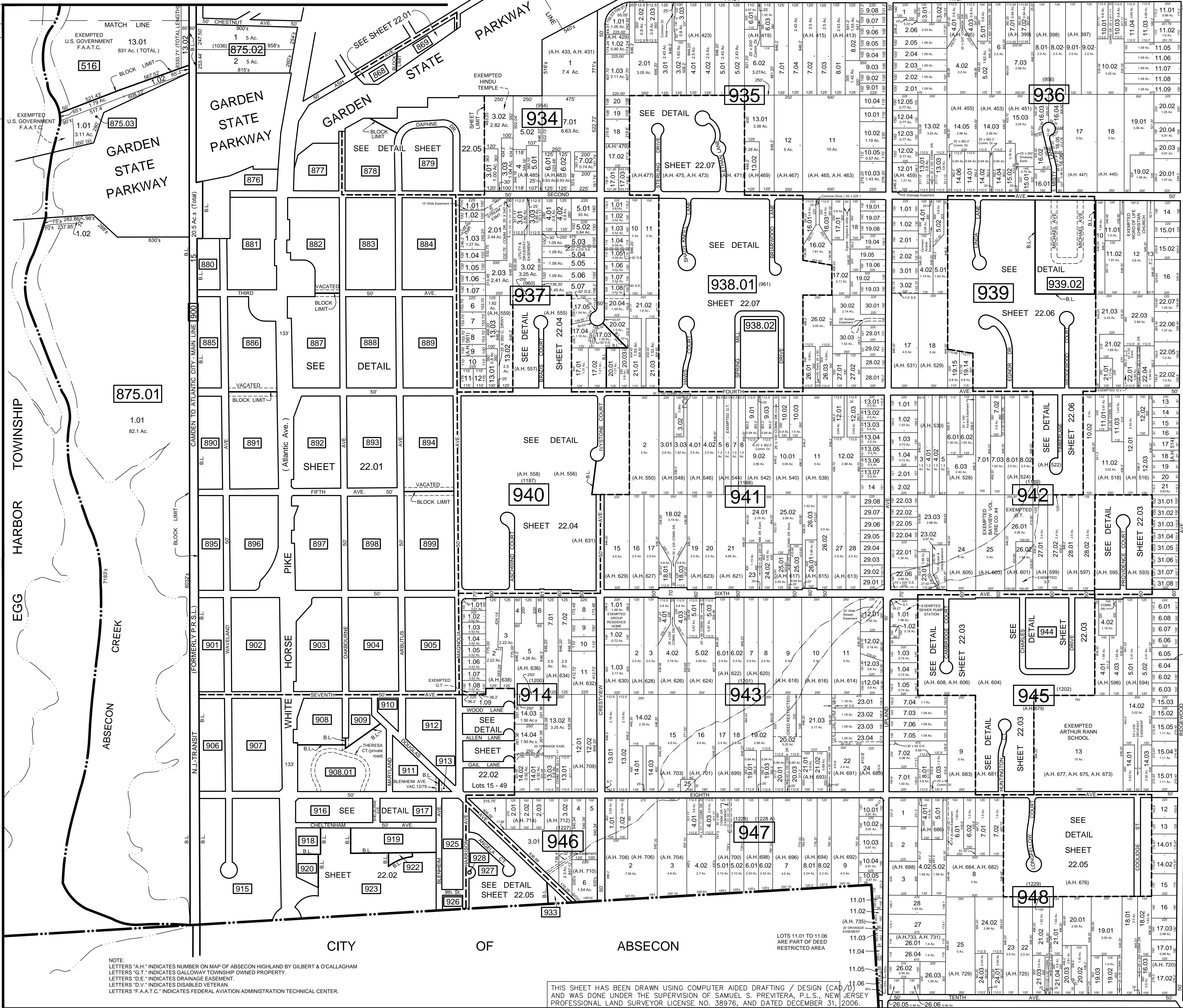


DATE	NAME	NO.
Aug. 2008	Dixon Assoc	1
Mar. 2011	Dixon Assoc	2
Nov. 15, 2011	Dixon Assoc	3



LEGEND

BLOCK	SHEET
868-869	22.01
876-905	22.01
906-929	22.02
944-945	22.03
948	22.03

REVISIONS TO THIS MAP
HAVE BEEN MADE BY
DANIEL J. GALLETTA, P.L.S.
N.J. LIC. NO. 25050

DATE: 11/15/12

SHEET 24.02

SHEET 24

TAX MAP
TOWNSHIP OF GALLOWAY
ATLANTIC COUNTY, NEW JERSEY
SCALE: 1" = 400'
JANUARY 2007

SAMUEL S. PREVITERA, P.L.S.
N.J. LIC. No. 38976
26 NORTH ROUTE 73, SUITE 200
CEDAR BROOK, N.J. 08018

NOTE:
LETTERS "A.H." INDICATES NUMBER ON MAP OF ABSECON HIGHLAND BY GILBERT & O'CALLAGHAN
LETTERS "G.T." INDICATES GALLOWAY TOWNSHIP OWNED PROPERTY.
LETTERS "D.E." INDICATES DRAINAGE EASEMENT.
LETTERS "D.V." INDICATES DISABLED VETERAN.
LETTERS "F.A.A.T.C." INDICATES FEDERAL AVIATION ADMINISTRATION TECHNICAL CENTER.

THIS SHEET HAS BEEN DRAWN USING COMPUTER AIDED DRAFTING / DESIGN (CAD) AND WAS DONE UNDER THE SUPERVISION OF SAMUEL S. PREVITERA, P.L.S., NEW JERSEY PROFESSIONAL LAND SURVEYOR LICENSE NO. 38976, AND DATED DECEMBER 31, 2006.