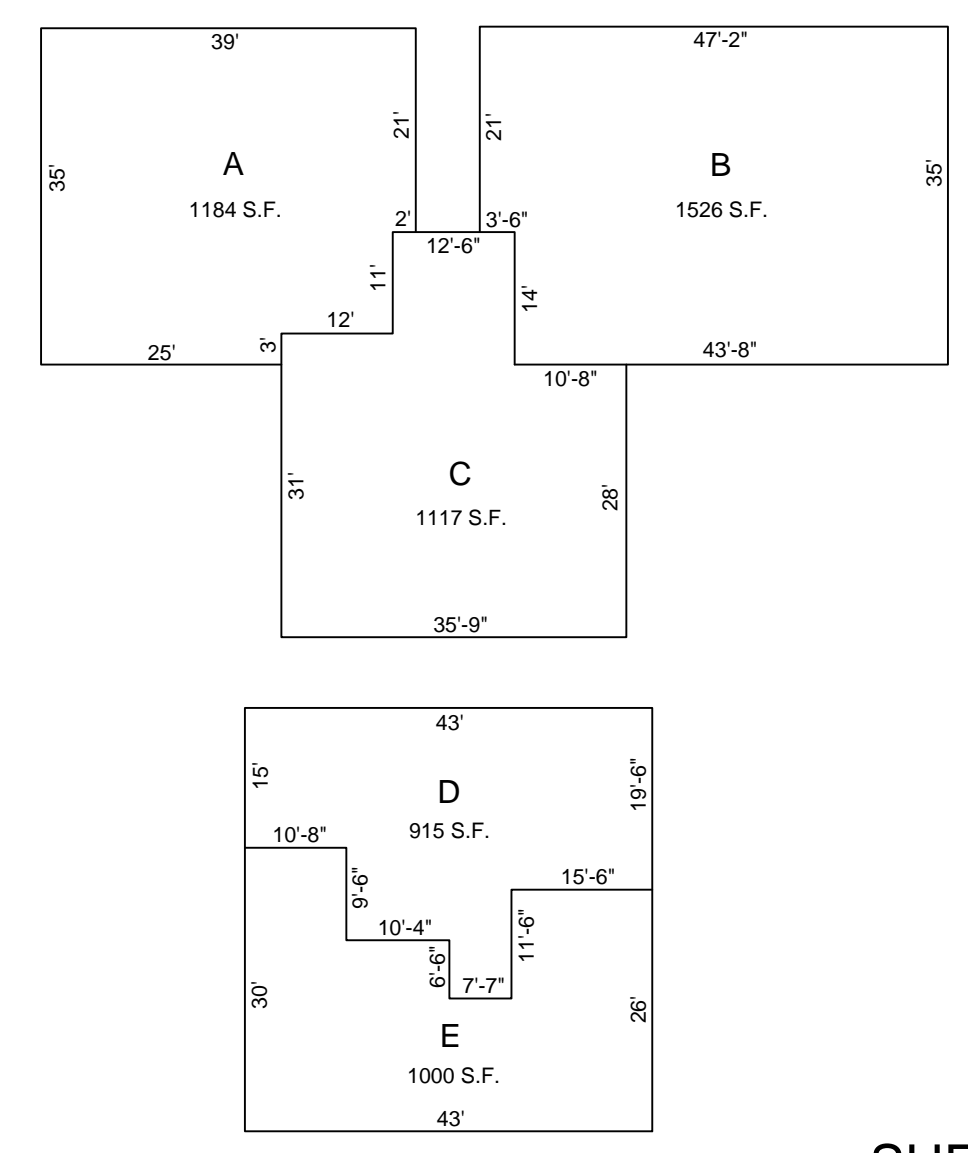


REVISIONS		
DATE	NAME	NO.
Aug. 2008	Dixon Assoc.	1
Nov. 15, 2008	Dixon Assoc.	2

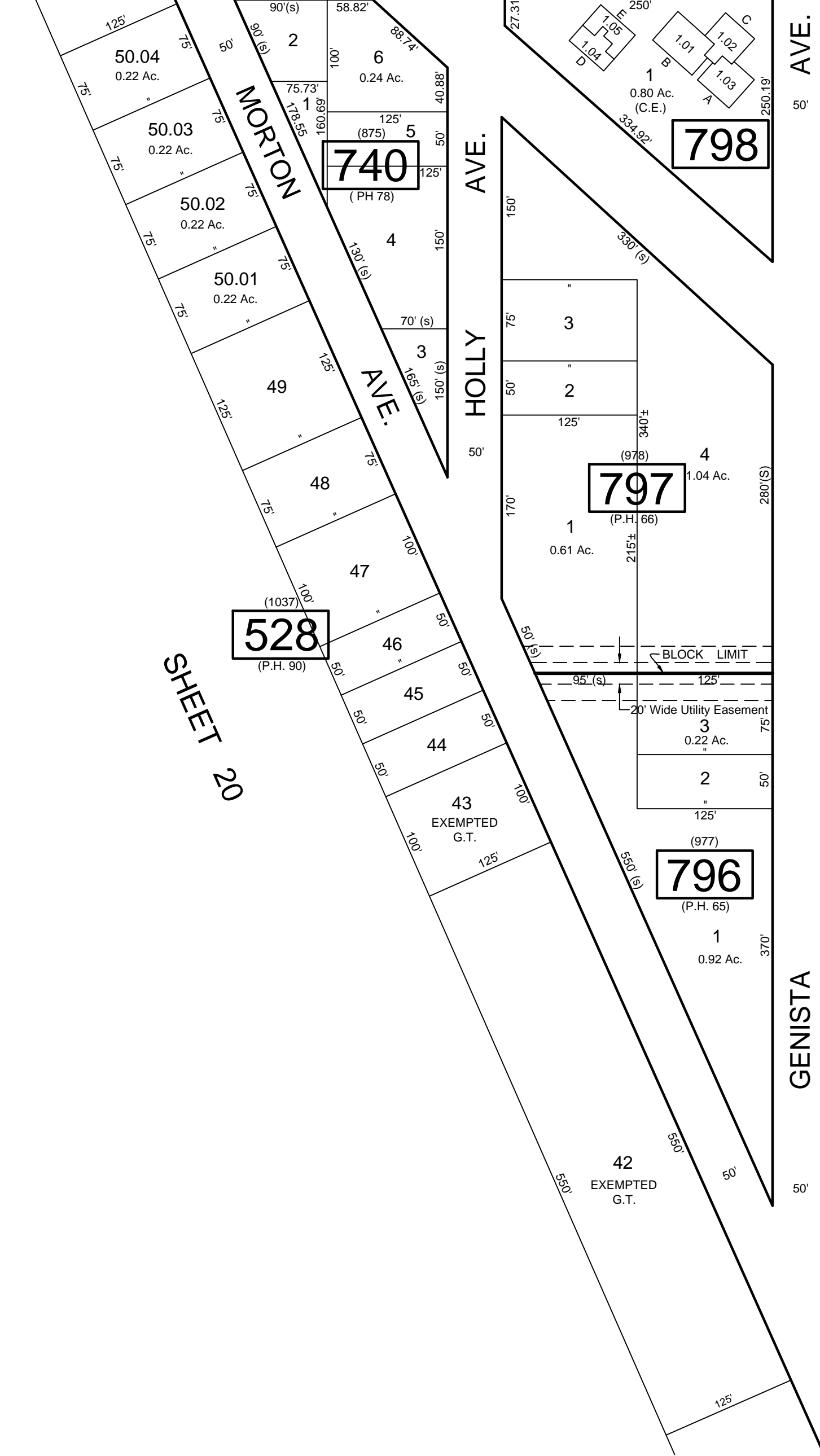
SHEET 20.05



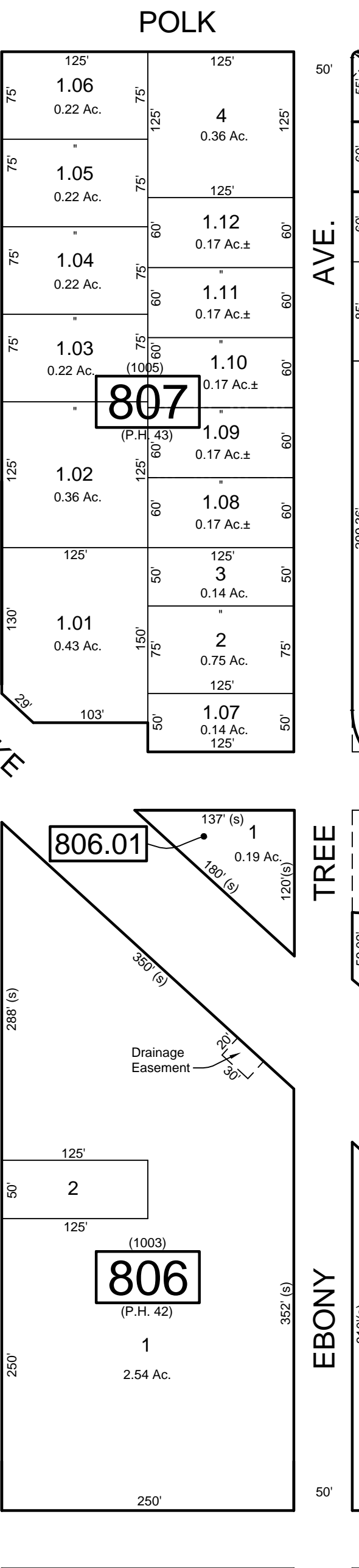
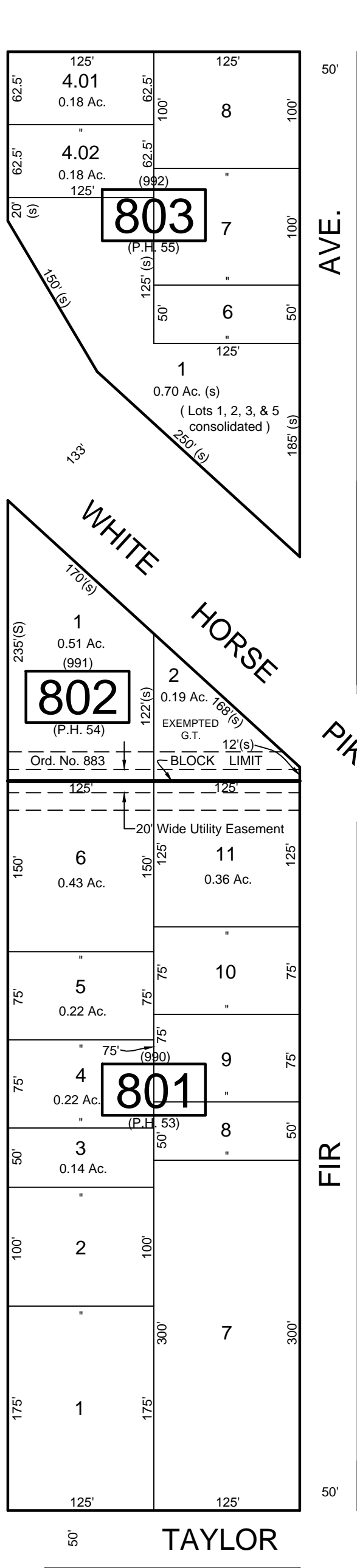
SHEET 20.05

SHEET 20.05

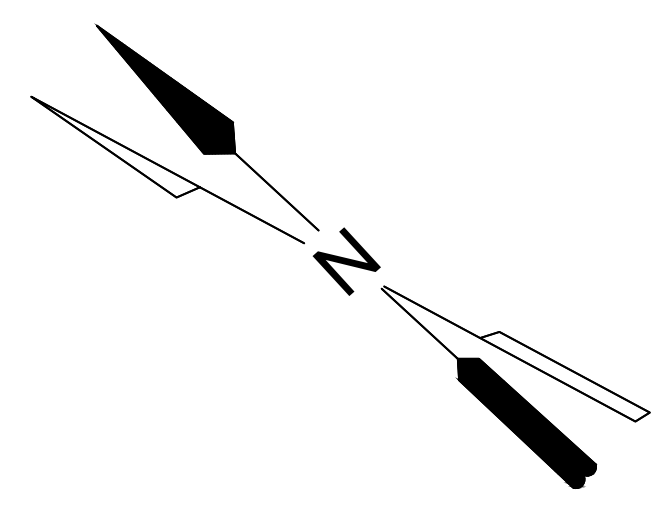
POLK AVE.



SHEET 20



SHEET 20.09



SHEET 20.09

SHEET 22

REVISIONS TO THIS MAP
 HAVE BEEN MADE BY
DANIEL J. GALLETTA, P.L.S.
 N.J. LIC. NO. 25050

DATE: 11/15/12

TAX MAP
 TOWNSHIP OF GALLOWAY
 ATLANTIC COUNTY, NEW JERSEY
 SCALE: 1" = 100' JANUARY 2007
SAMUEL S. PREVITERA, P.L.S.
 N.J. LIC. No. 38976
 26 NORTH ROUTE 73, SUITE 200
 CEDAR BROOK, N.J. 08018

NOTE:
 LETTERS "P.H." INDICATES NUMBER ON MAP OF "PINEHURST" BY PINEHURST DEV. CO.
 LETTERS "G.T." INDICATES GALLOWAY TOWNSHIP OWNED PROPERTY.

THIS SHEET HAS BEEN DRAWN USING COMPUTER AIDED DRAFTING / DESIGN (CAD/D) AND WAS DONE UNDER THE SUPERVISION OF SAMUEL S. PREVITERA, P.L.S., NEW JERSEY PROFESSIONAL LAND SURVEYOR LICENSE NO. 38976, AND DATED DECEMBER 31, 2006.