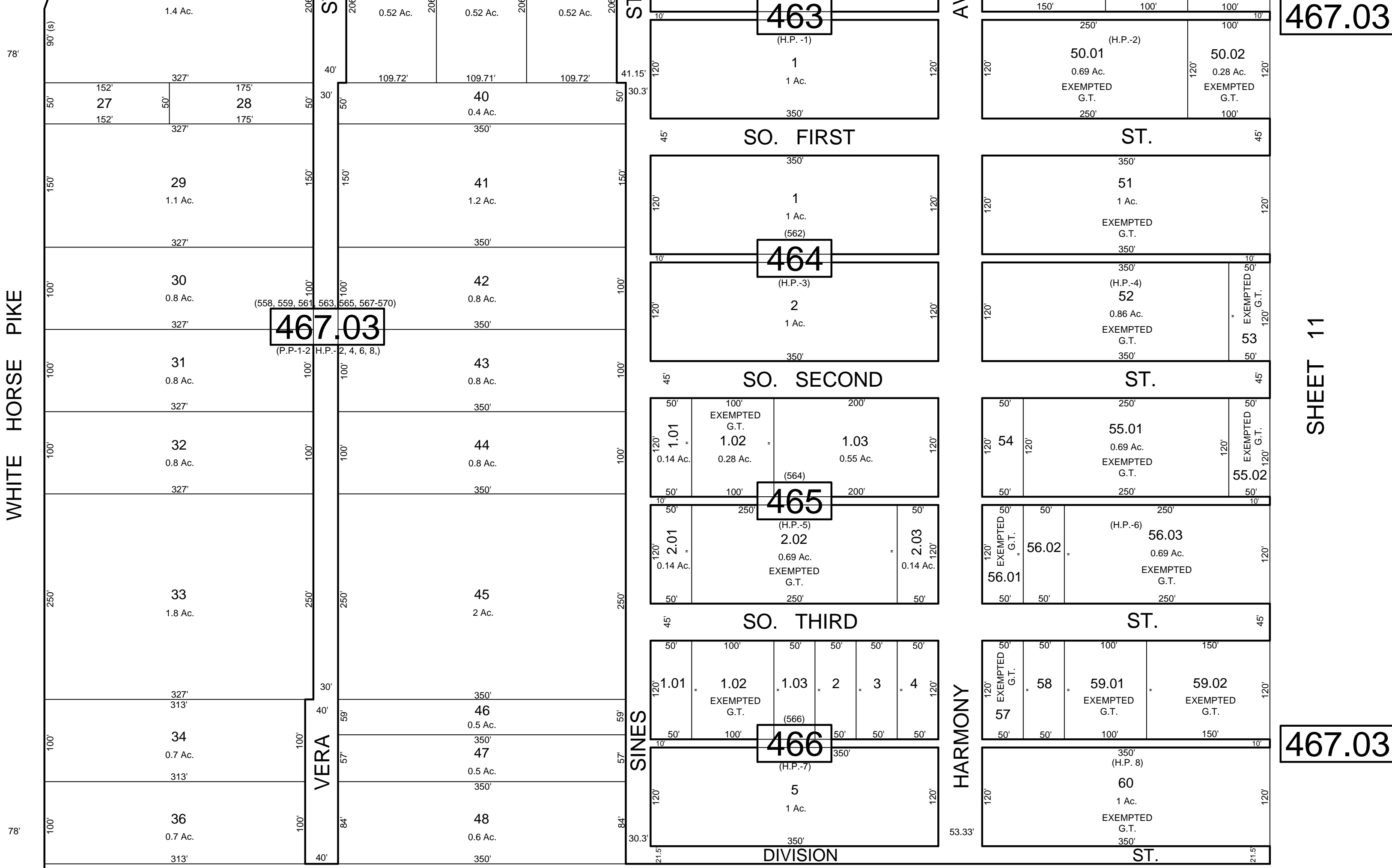
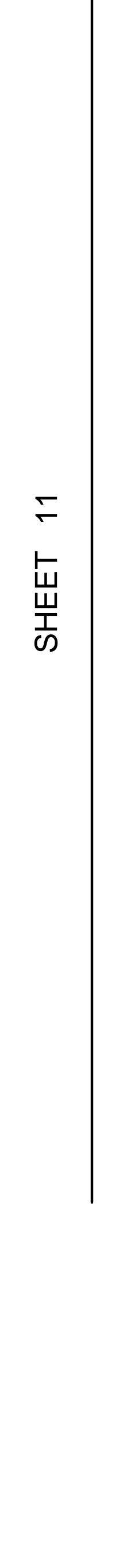
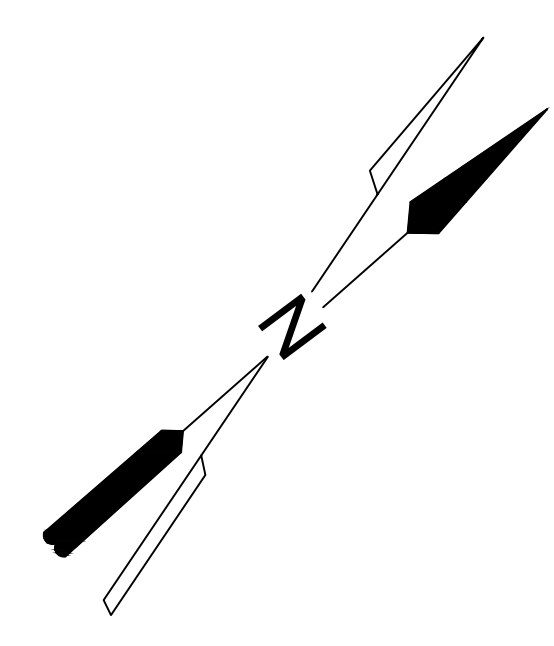


REVISIONS		
DATE	NAME	NO.



NOTE:  
 LETTERS "P.P." INDICATES NUMBER ON MAP OF "POMONA PARK" BY LOUISA A. SINES  
 LETTERS "H.P." INDICATES NUMBER ON MAP OF "HARMONY PARK" ESTATES BY ARTHUR GERSBON  
 LETTERS "G.T." INDICATES GALLOWAY TOWNSHIP OWNED PROPERTY.

THIS SHEET HAS BEEN DRAWN USING COMPUTER AIDED DRAFTING / DESIGN (CAD/D)  
 AND WAS DONE UNDER THE SUPERVISION OF SAMUEL S. PREVITERA, P.L.S., NEW JERSEY  
 PROFESSIONAL LAND SURVEYOR LICENSE NO. 38976, AND DATED DECEMBER 31, 2006.

**TAX MAP**  
 TOWNSHIP OF GALLOWAY  
 ATLANTIC COUNTY, NEW JERSEY  
 SCALE: 1" = 100' JANUARY 2007  
 SAMUEL S. PREVITERA, P.L.S.  
 N.J. LIC. NO. 38976  
 26 NORTH ROUTE 73, SUITE 200  
 CEDAR BROOK, N.J. 08018