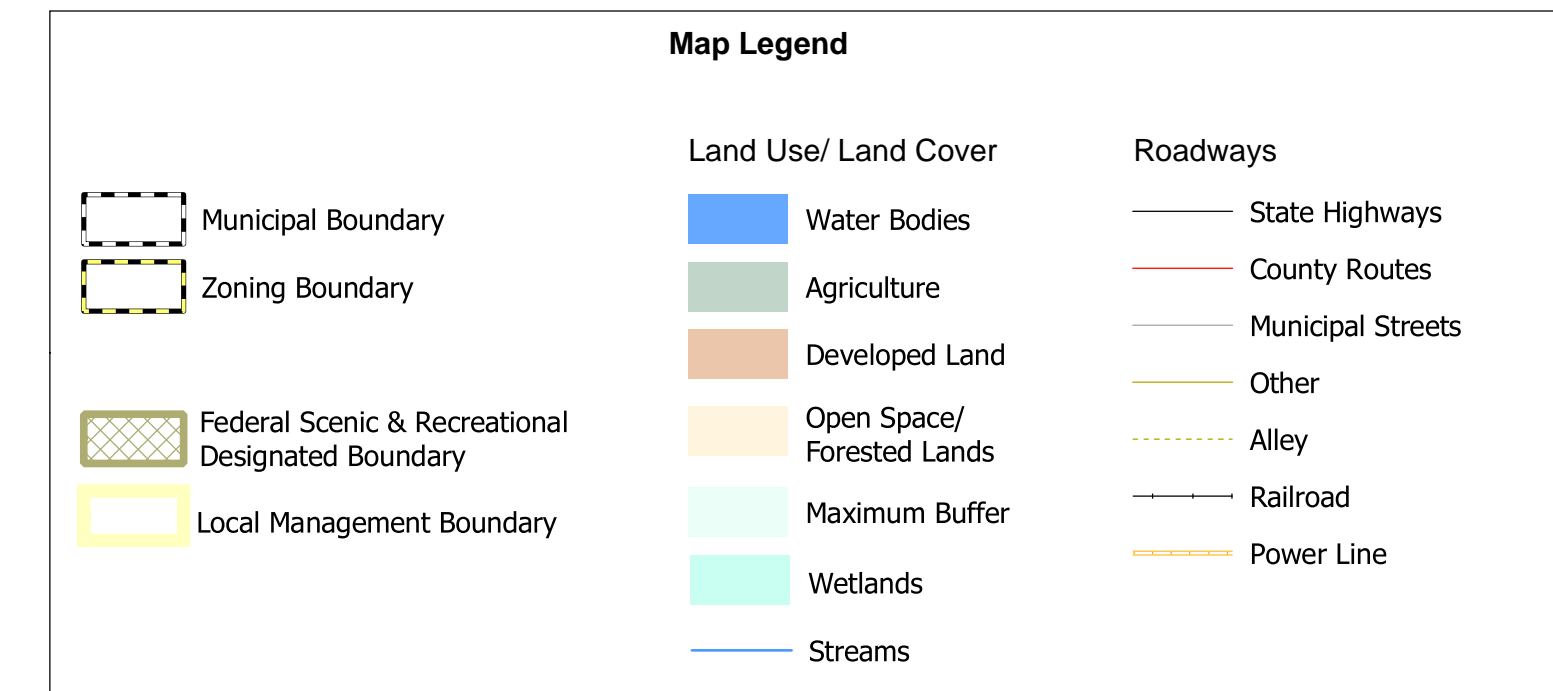
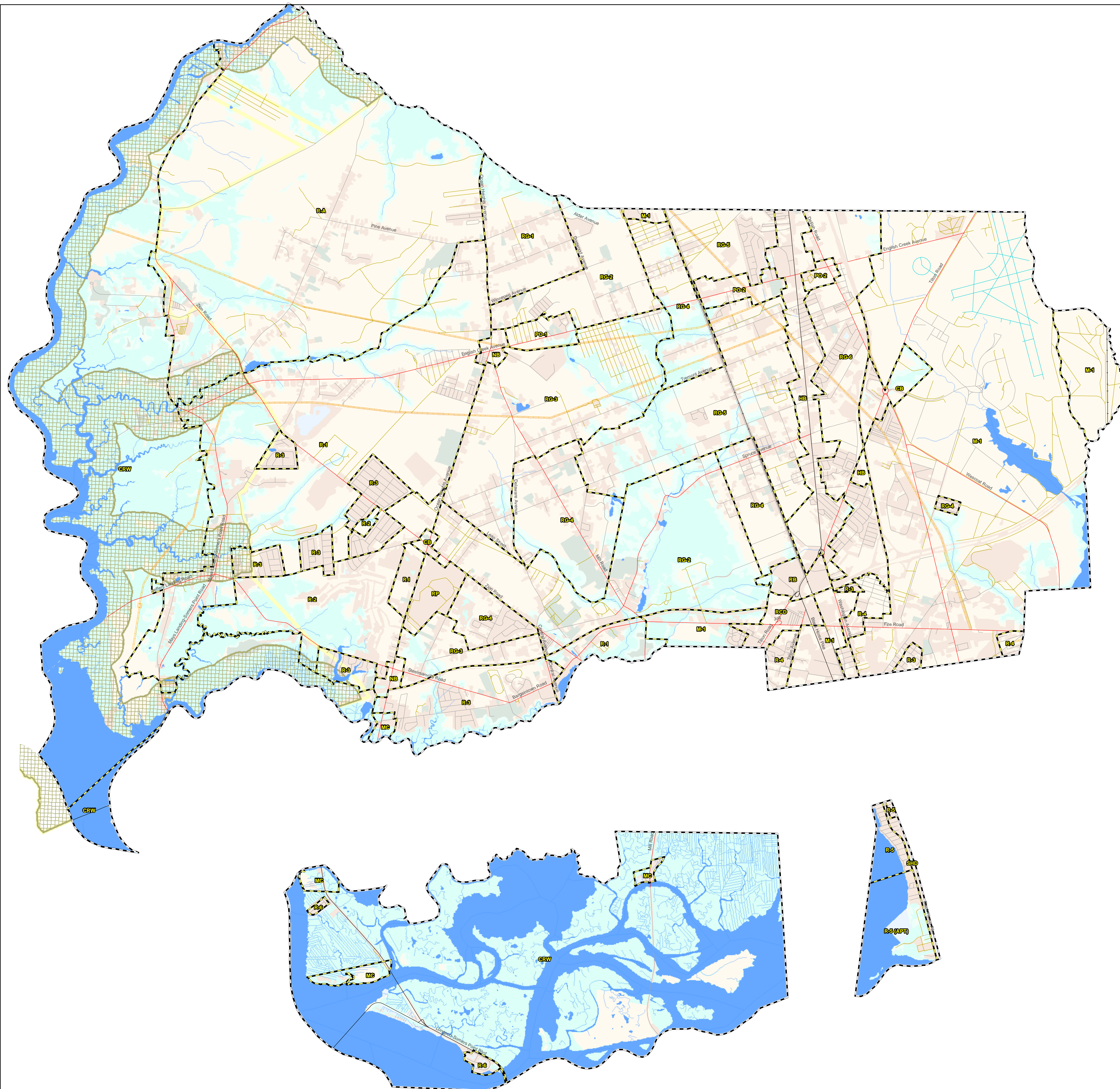
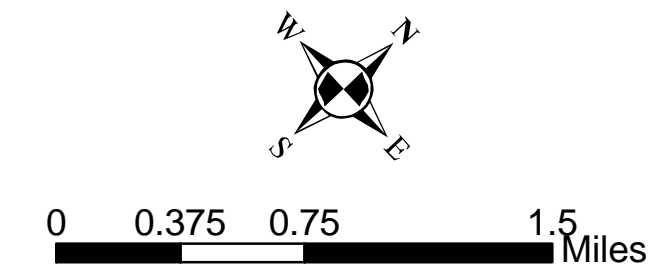


Zoning Boundaries Egg Harbor Township Atlantic County, NJ



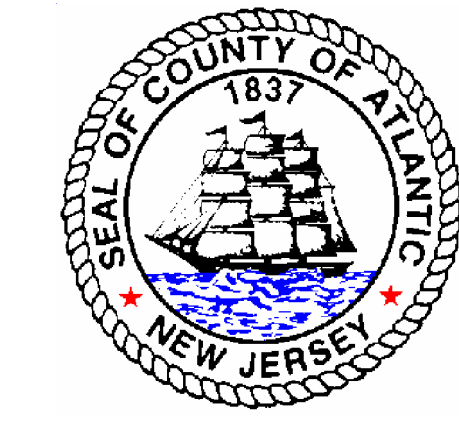
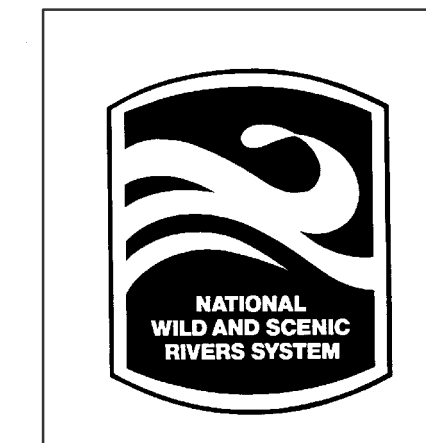
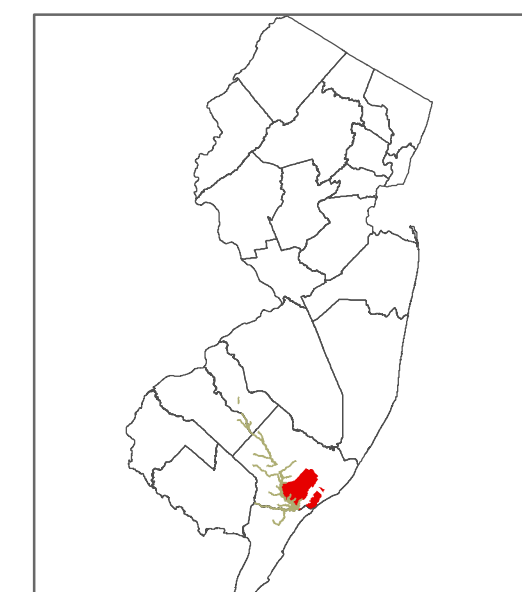
Zone Description Key

ZONE	DESCRIPTION
CB	Community Business
CRW	Conservational Recreational Wetlands
HB	Highway Business
M-1	Light Industrial
MC	Marine Commercial
NB	Neighborhood Business
PO-1	Professional Offices
PO-2	Professional Offices
R-1	Residential
R-2	Low density single family Residential
R-3	Residential single family detached
R-4	Residential
R-5	Residential
R-5 (APT)	Apt. Residential
R-6	Residential
R-A	Residential
RB	Regional Business
RCD	Regional Commercial Development District
RG-1	Residential single family detached
RG-2	Residential
RG-3	Residential Growth
RG-4	Residential
RG-5	Residential
RG-6	Growth Residential
R-I	Restricted Industrial
RP	Recreational Park
SHD	Special Highway Development



Map Prepared by the Atlantic County
Department of Regional Planning & Development
Office of Geographic Information Systems
In Cooperation with the National Park Service

Joseph Maher - Department Head
Barry Hackett - Director of GIS
Prepared October 1999
Printed July 2004



This map is for demonstration purposes only and was not developed in accordance with National Map Accuracy Standards. Any use of this product with respect to accuracy and precision shall be the sole responsibility of the user. The map was developed, in part, using New Jersey Department of Environmental Protection Geographic Information System (GIS) digital data, in conjunction with the Atlantic County Office of Geographic Information Systems, but this secondary product has not been verified by NJDEP and is not state authorized.

The geodetic accuracy and precision of the GIS data contained in this map has not been developed nor verified by a professional licensed land surveyor and shall not be nor is intended to be used in matters requiring delineation and location of true ground horizontal and/or vertical controls.

Map Document: Buv.mxd 7/8/2004