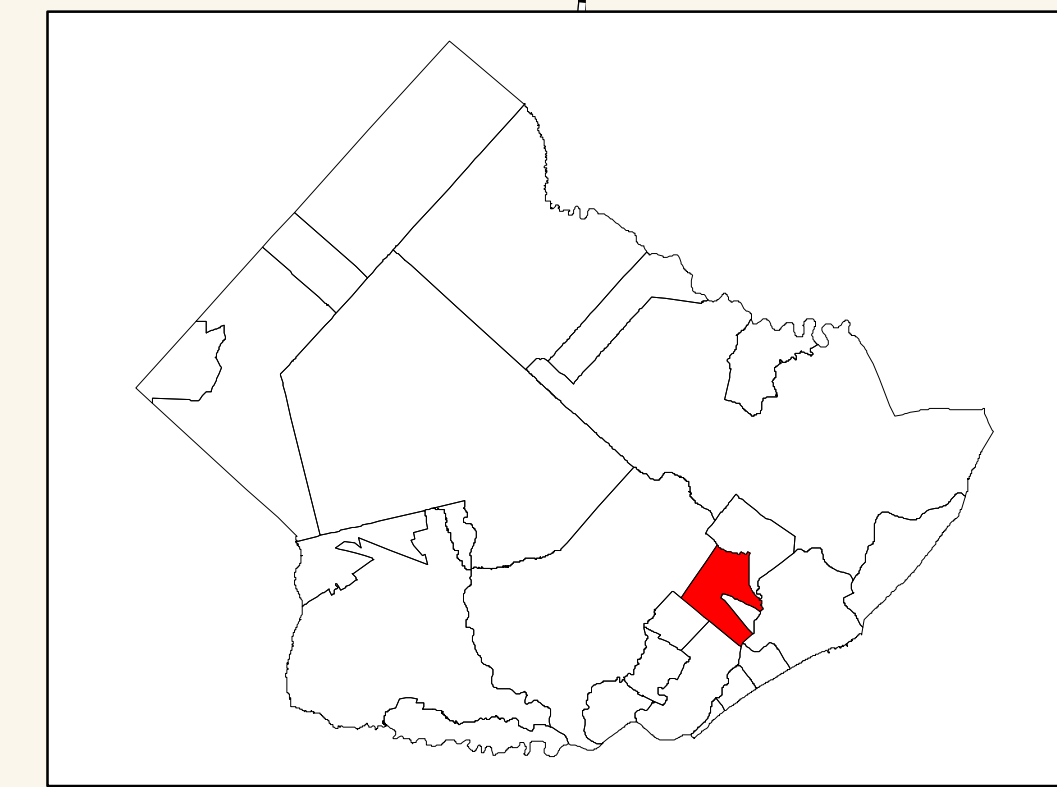
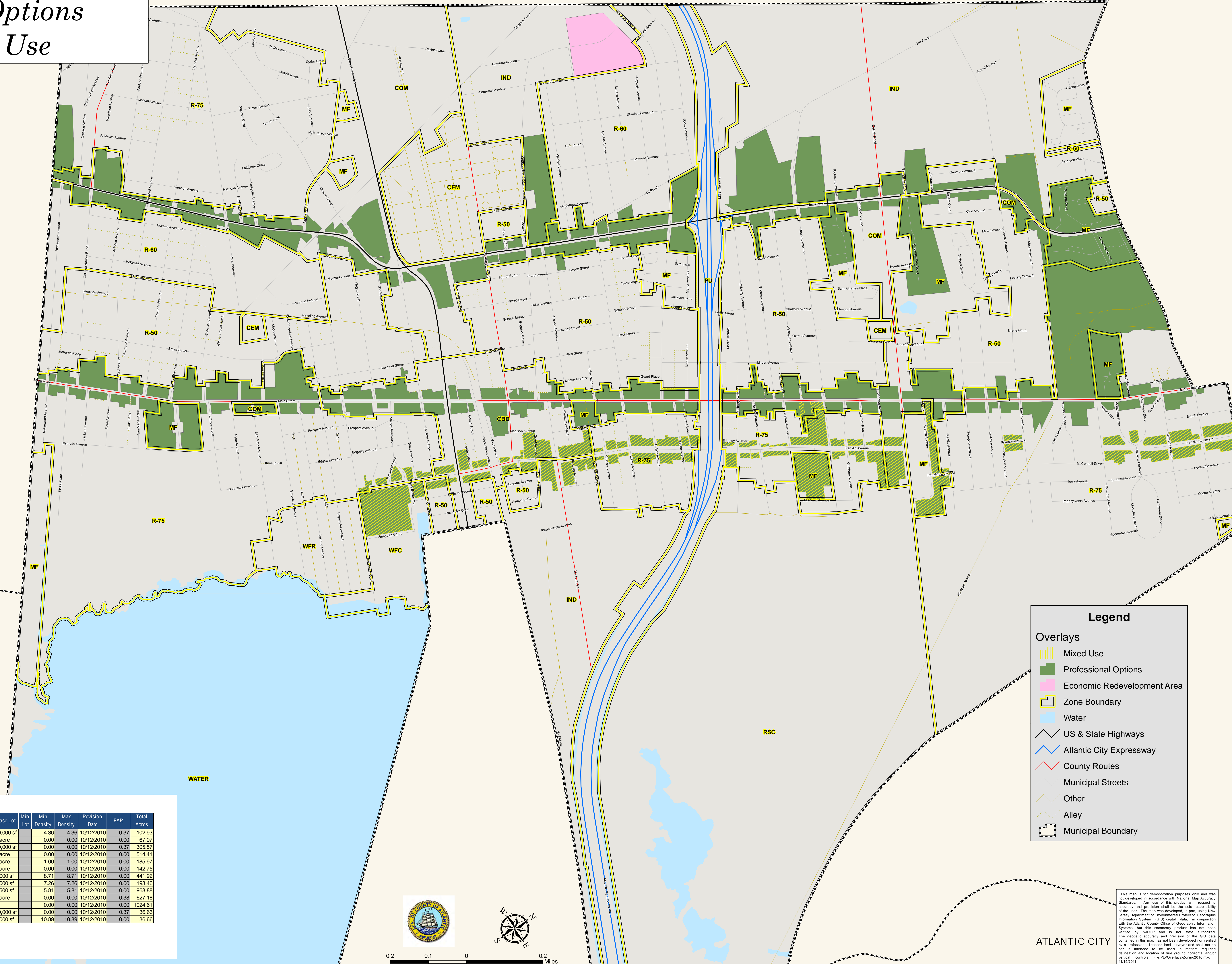


Pleasantville Municipal Zoning Boundaries December 2011 Atlantic County, NJ Overlay Map 2: Professional Options and Mixed Use

EGG HARBOR TOWNSHIP



NORTHFIELD



Legend

Overlays

- Mixed Use
- Professional Options
- Economic Redevelopment Area
- Zone Boundary
- Water
- US & State Highways
- Atlantic City Expressway
- County Routes
- Municipal Streets
- Other
- Alley
- Municipal Boundary

Pleasantville Municipal Zoning

Zone	Description	Use	Base Lot	Min Lot	Min Density	Max Density	Revision Date	FAR	Total Acres
CBD	Central Business District*	COMMERCIAL	10,000 sf		4.36	4.36	10/12/2010	0.37	102.93
CEM	Cemetery	PARK	1 acre		0.00	0.00	10/12/2010	0.00	67.07
COM	Commercial	COMMERCIAL	10,000 sf		0.00	0.00	10/12/2010	0.37	305.57
IND	Industrial	INDUSTRIAL	1 acre		0.00	0.00	10/12/2010	0.00	514.41
MF	Multi Family Condominiums, Apartments and/or Townhouses	RESIDENTIAL	1 acre		1.00	1.00	10/12/2010	0.00	185.97
PU	Public Utilities	INDUSTRIAL	1 acre		0.00	0.00	10/12/2010	0.00	142.75
R-50	Single Family - 5000 sq ft	RESIDENTIAL	5,000 sf		8.71	8.71	10/12/2010	0.00	441.92
R-60	Single Family - 6000 sq ft	RESIDENTIAL	6,000 sf		7.26	7.26	10/12/2010	0.00	193.46
R-75	Single Family - 7500 sq ft	RESIDENTIAL	7,500 sf		5.81	5.81	10/12/2010	0.00	968.88
RSC	Regional Shopping Center	COMMERCIAL	1 acre		0.00	0.00	10/12/2010	0.38	627.18
WATER	Lakes Bay	CONSERVATION			0.00	0.00	10/12/2010	0.00	1024.61
WFR	Waterfront Development	COMMERCIAL	10,000 sf		0.00	0.00	10/12/2010	0.37	36.63
WFR	Waterfront Residential	RESIDENTIAL	4,000 sf		10.89	10.89	10/12/2010	0.00	36.66

*Residential uses permitted as a secondary use on the site in this zoning district



0.2 0.1 0 0.2 Miles

ATLANTIC CITY

This map is for demonstration purposes only and was not developed in accordance with National Map Accuracy Standards. Any use of this product with respect to accuracy and precision shall be the sole responsibility of the user. The map was developed, in part, using New Jersey Department of Environmental Protection Geographic Information System (GIS) digital data, in conjunction with the Atlantic County Office of Geographic Information Systems. All this secondary product has not been verified by NJDEP and is not state authorized. The geographic accuracy and precision of the GIS data contained in this map has not been developed nor verified by a professional licensed land surveyor and shall not be relied upon for any legal or other purposes. This map is intended to be used in matters requiring determinations and locations of land ground horizontal and vertical controls. File: PLVOverlay2-Zoning2010.mxd 11/15/2011