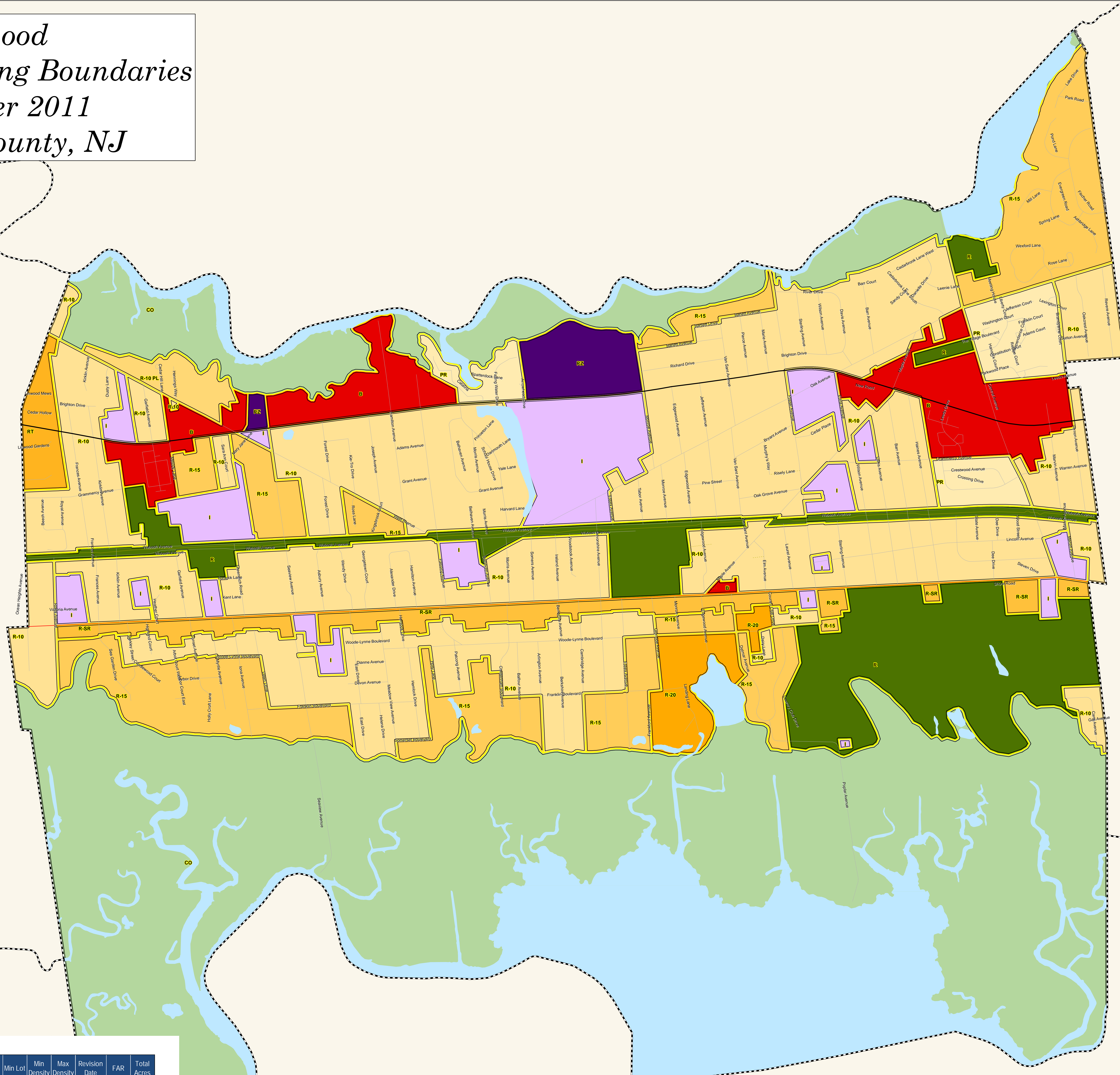
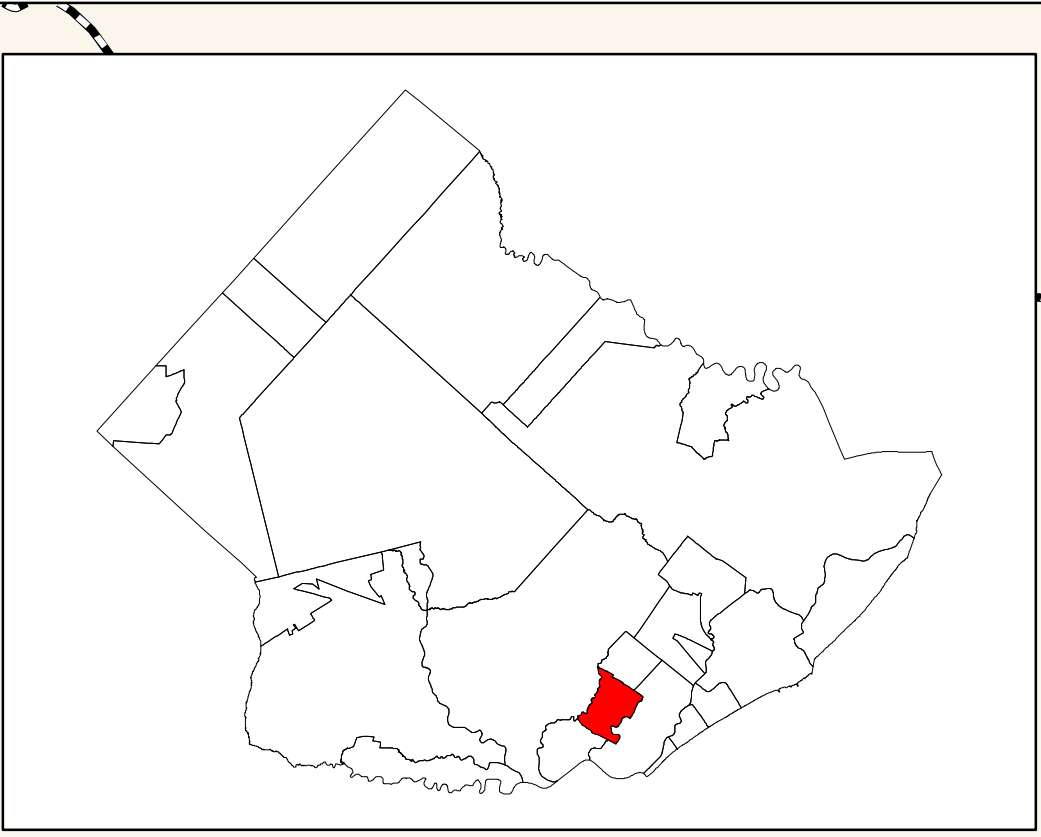


Linwood Municipal Zoning Boundaries December 2011 Atlantic County, NJ



SOMERS POINT

NORTHFIELD

EGG HARBOR TOWNSHIP

Linwood Municipal Zoning

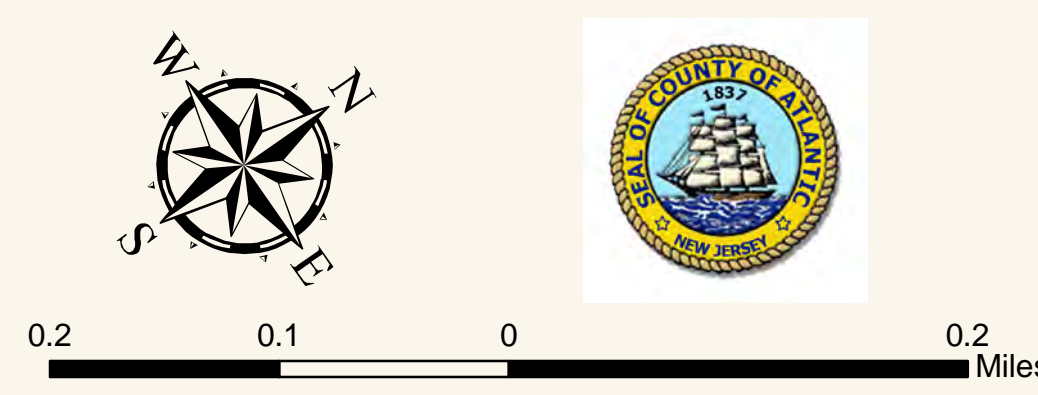
Zone	Description	Use	Base Lot	Min Lot	Min Density	Max Density	Revision Date	FAR	Total Acres
B	Business	COMMERCIAL		10,000 sf	0.00	0.00	12/5/2011	0.00	103.77
CD	Conservation	CONSERVATION			0.00	0.00	12/5/2011	0.00	1238.74
I	Institutional Zone	INSTITUTIONAL			0.00	0.00	12/5/2011	0.00	118.87
PR	Planned Residential Development	RESIDENTIAL			0.00	0.00	12/5/2011	0.00	53.48
R	Recreation / Open Space	PARK			0.00	0.00	12/5/2011	0.00	198.97
R-10	Single Family Residential (R-10)	RESIDENTIAL		10,000 sf	0.00	4.36	12/5/2011	0.00	710.51
R-10 PL	Single Family Residential (R-10 PL)	RESIDENTIAL		10,000 sf	0.00	4.36	12/5/2011	0.00	15.79
R-15	Single Family Residential (R-15)	RESIDENTIAL		15,000 sf	0.00	2.90	12/5/2011	0.00	226.13
R-20	Single Family Residential (R-20)	RESIDENTIAL		20,000 sf	0.00	2.18	12/5/2011	0.00	28.81
R-SR	Single Family Residential - Shore Road	RESIDENTIAL		15,000 sf	0.00	2.90	12/5/2011	0.00	52.55
RT	Multi-Family (Townhomes)	RESIDENTIAL		10,000 sf	0.00	4.36	12/5/2011	0.00	16.13
RZ	Redevelopment Areas	RESIDENTIAL		10,000 sf	0.00	0.00	12/5/2011	0.00	29.08

Minimum Street frontage is 100 ft

Legend

Zoning

- Agricultural
- Commercial
- Conservation / Wetlands
- Industrial/ Institutional
- Residential
- Water
- US & State Highways
- County Routes
- Municipal Streets
- Other
- Alley
- Municipal Boundary



This map is for demonstration purposes only and was not developed in accordance with National Map Accuracy Standards. Any use of this product with respect to accuracy and precision shall be the sole responsibility of the user. The map was developed, in part, using New Jersey Department of Environmental Protection Geographic Information System (GIS) digital data, in conjunction with the Atlantic County Office of Geographic Information Systems, but this secondary product has not been verified by NJDEP and is not state authorized. The geographic accuracy and precision of the GIS data contained in this map has not been developed nor verified by a professional licensed land surveyor and shall not be used as intended to be used as matters requiring delineation and location of true ground horizontal and/or vertical controls. File:LINZoning011.mxd
11/15/2011