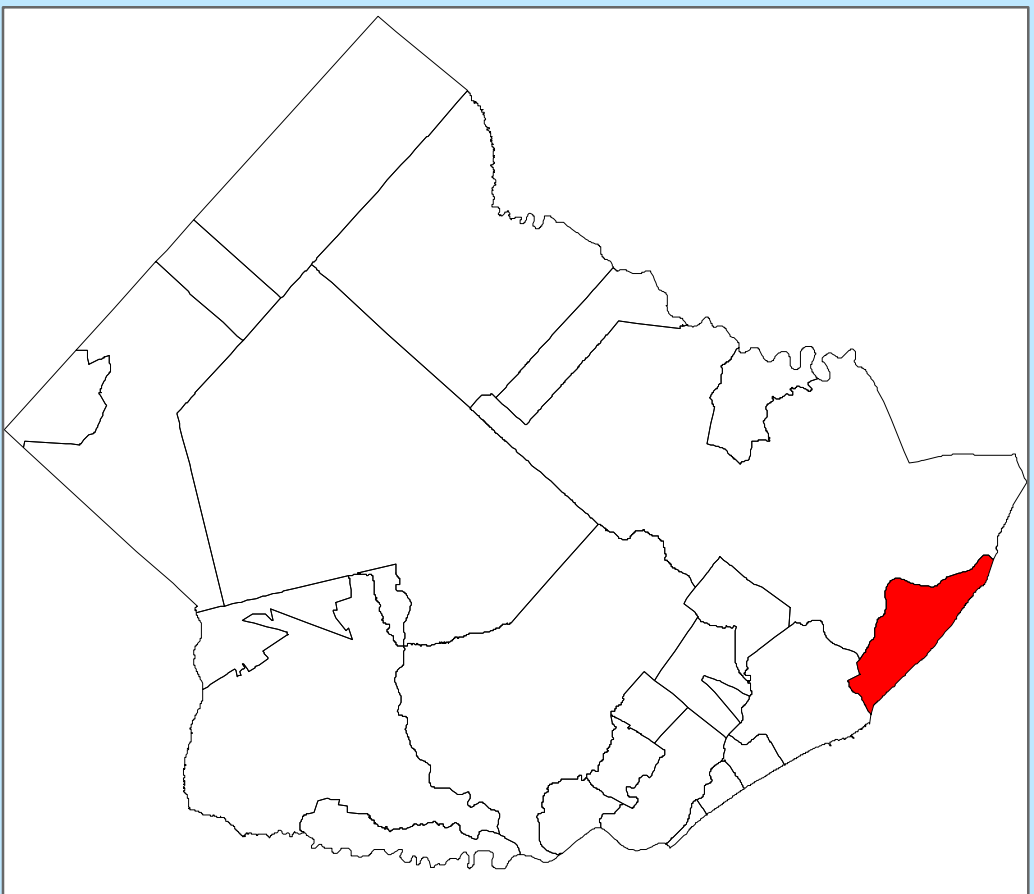
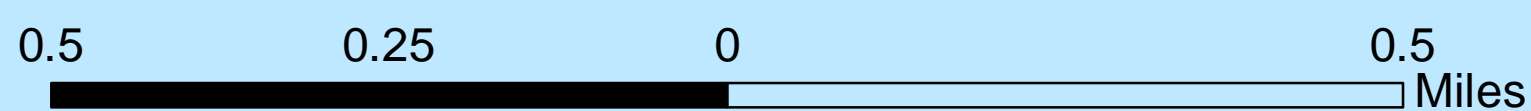
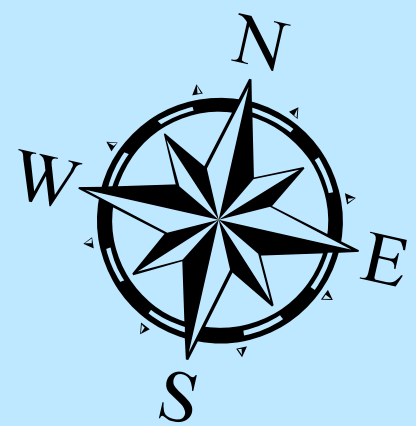
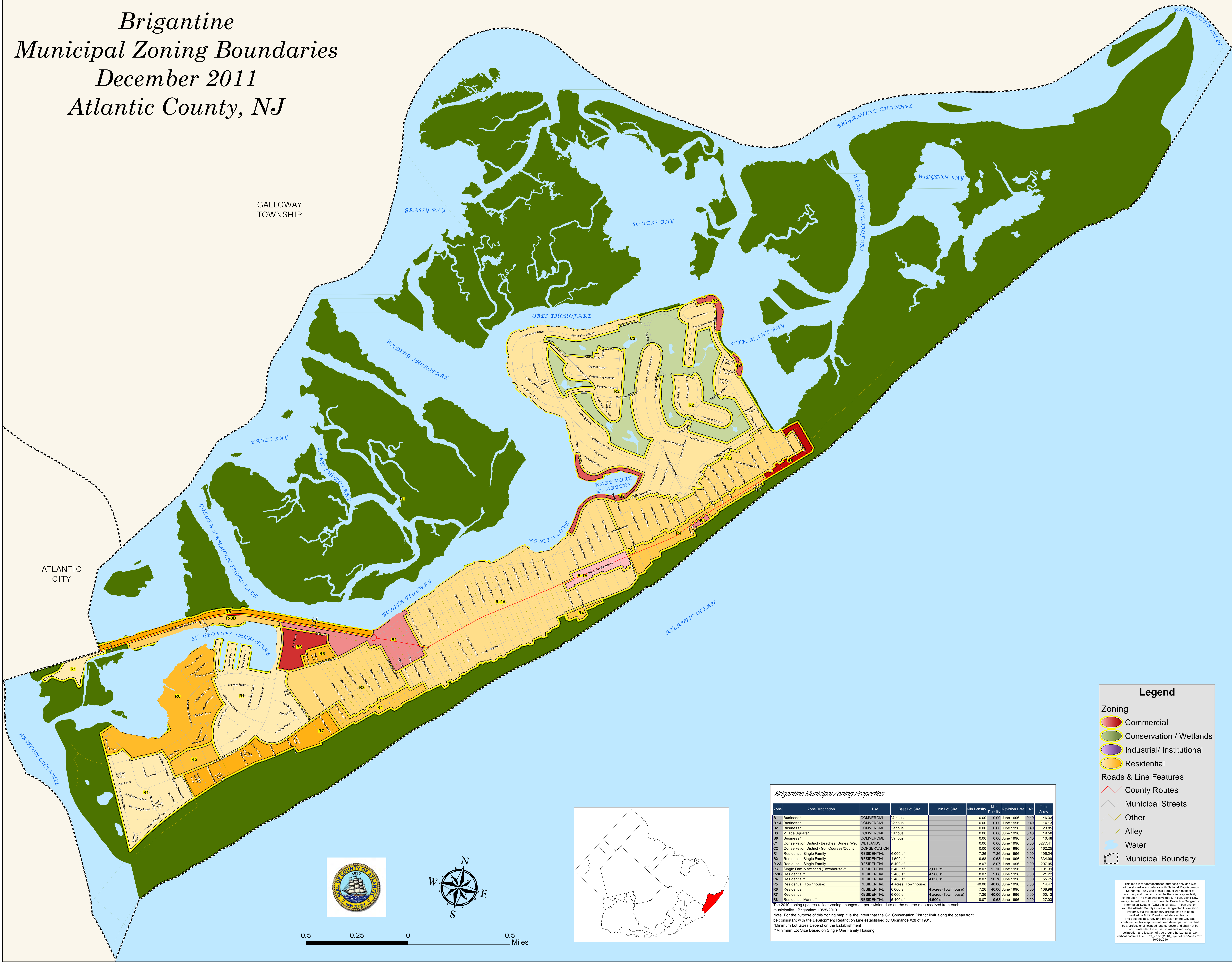


Brigantine
Municipal Zoning Boundaries
December 2011
Atlantic County, NJ



Brigantine Municipal Zoning Properties

Zone	Zone Description	Use	Base Lot Size	Min Lot Size	Min Density	Max Density	Revision Date	FAR	Total Acres
B1	Business*	COMMERCIAL	Various		0.00	0.00	June 1996	0.40	46.33
B1A	Business*	COMMERCIAL	Various		0.00	0.00	June 1996	0.40	14.13
B2	Business*	COMMERCIAL	Various		0.00	0.00	June 1996	0.40	23.65
B3	Village Square*	COMMERCIAL	Various		0.00	0.00	June 1996	0.40	19.58
B6	Business*	COMMERCIAL	Various		0.00	0.00	June 1996	0.40	10.48
C1	Conservation District - Beaches, Dunes, Wetlands	CONSERVATION	Various		0.00	0.00	June 1996	0.00	3277.41
C2	Conservation District - Golf Courses/County	CONSERVATION	Various		0.00	0.00	June 1996	0.00	162.25
R1	Residential Single Family	RESIDENTIAL	6,000 sf		7.26	7.26	June 1996	0.00	195.24
R2	Residential Single Family	RESIDENTIAL	4,000 sf		9.68	9.68	June 1996	0.00	334.99
R2A	Residential Single Family	RESIDENTIAL	5,400 sf		8.07	8.07	June 1996	0.00	297.95
R3	Single Family Attached (Townhouse)**	RESIDENTIAL	5,400 sf	3,600 sf	8.07	12.10	June 1996	0.00	191.39
R3B	Residential***	RESIDENTIAL	5,400 sf	4,500 sf	8.07	9.68	June 1996	0.00	21.22
R4	Residential***	RESIDENTIAL	5,400 sf	4,050 sf	8.07	10.76	June 1996	0.00	15.75
R5	Residential (Townhouse)	RESIDENTIAL	4 acres	4 acres (Townhouse)	40.00	40.00	June 1996	0.00	14.47
R6	Residential	RESIDENTIAL	6,000 sf	4 acres	7.26	40.00	June 1996	0.00	108.98
R7	Residential	RESIDENTIAL	6,000 sf	4 acres	7.26	40.00	June 1996	0.00	50.13
R8	Residential Marine**	RESIDENTIAL	5,400 sf	4,500 sf	8.07	9.68	June 1996	0.00	27.03

The 2010 zoning updates reflect zoning changes as per revision date on the source map received from each municipality. Brigantine: 10/25/2010.
Note: For the purpose of this zoning map it is the intent that the C-1 Conservation District limit along the ocean front be consistent with the Development Restriction Line established by Ordinance #28 of 1981.
**Minimum Lot Sizes Depend on the Establishment
***Minimum Lot Size Based on Single One Family Housing

Legend

Zoning

- Commercial
- Conservation / Wetlands
- Industrial/ Institutional
- Residential

Roads & Line Features

- County Routes
- Municipal Streets
- Other
- Alley
- Water
- Municipal Boundary

This map is for demonstration purposes only and was not developed in accordance with National Map Accuracy Standards. Any use of this product with respect to recovery and preservation shall be the sole responsibility of the user. The map was developed, in part, using New Jersey Department of Environmental Protection Geographic Information System (GIS) digital data, in conjunction with the Atlantic County Office of Geographic Information Systems, but this secondary product has not been verified by NCEM and is not state authorized. The geospatial accuracy and precision of the GIS data contained in this map has not been developed nor verified by a professional licensed land surveyor and shall not be used in matters requiring delineation and location of true ground horizontal and/or vertical controls. File: BRIG_Zoning2010_SymbolsandColors.mxd 10/26/2010