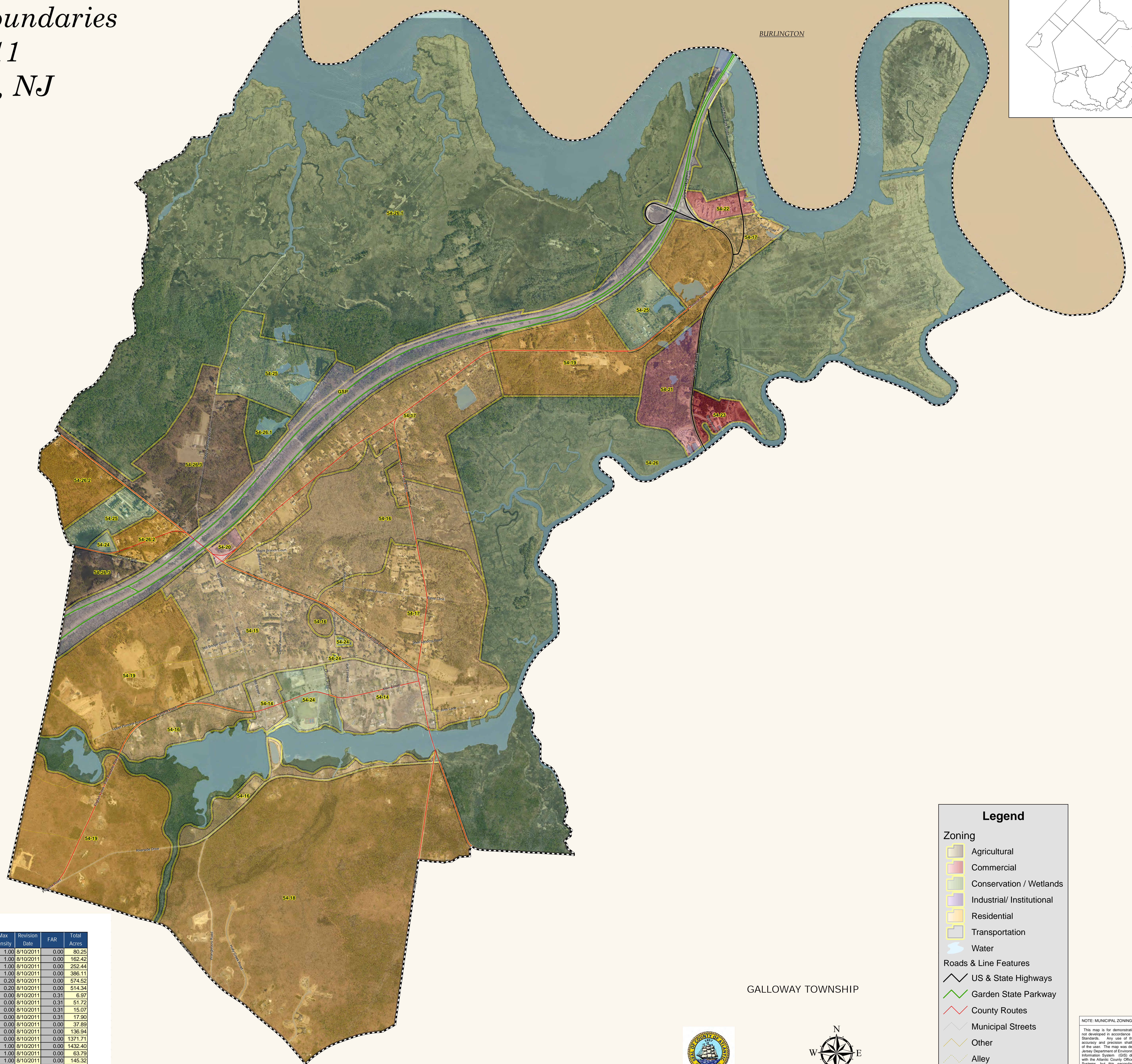
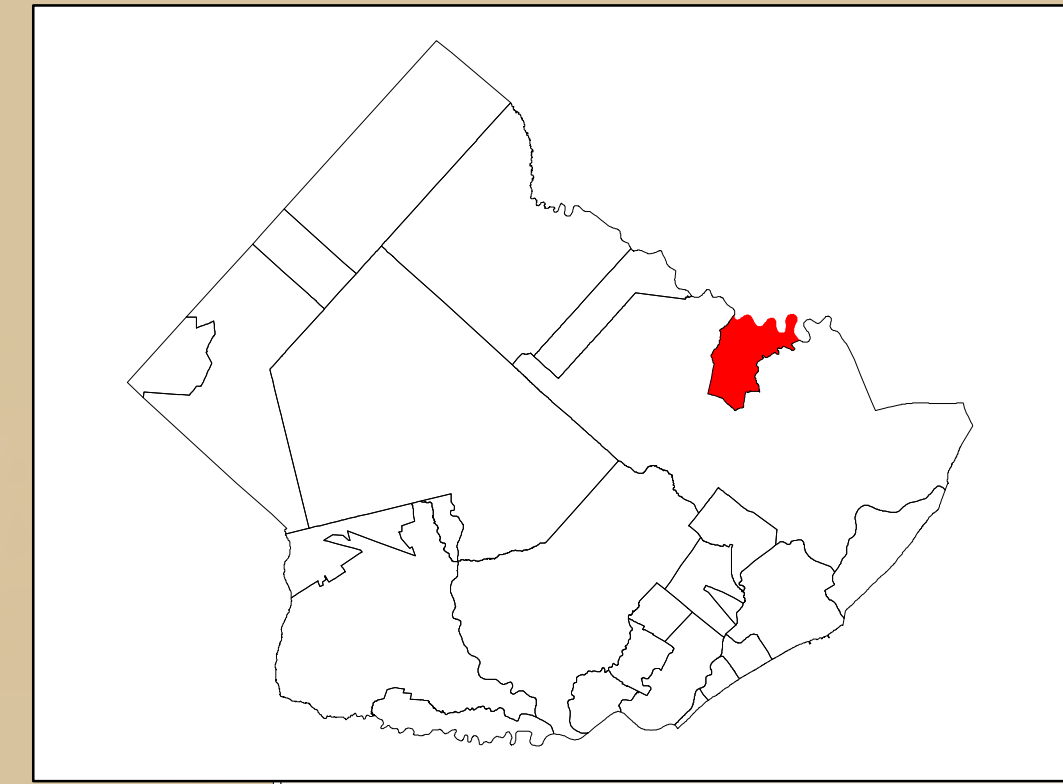


Port Republic Municipal Zoning Boundaries December 2011 Atlantic County, NJ



BURLINGTON

GALLOWAY TOWNSHIP

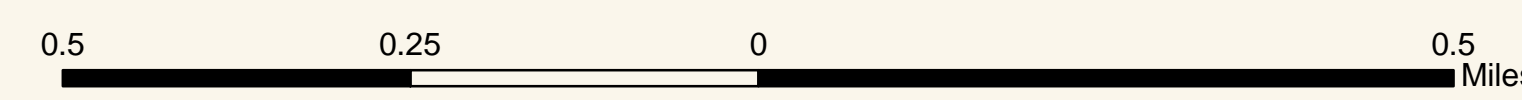
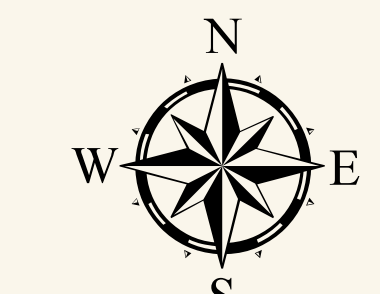
Legend

- Zoning**
 - Agricultural
 - Commercial
 - Conservation / Wetlands
 - Industrial/ Institutional
 - Residential
 - Transportation
 - Water
- Roads & Line Features**
 - US & State Highways
 - Garden State Parkway
 - County Routes
 - Municipal Streets
 - Other
 - Alley
- Boundaries**
 - Municipal Boundary
 - County Boundary

Port Republic Municipal Zoning

Zone	Description	Use	Base Lot	Min Lot	Min Density	Max Density	Revision Date	FAR	Total Acres
54-14	City Central Residential (Historic District)	RESIDENTIAL	1 acre		1.00	1.00	8/10/2011	0.00	80.25
54-15	City Central Residential (Historic Area)	RESIDENTIAL	1 acre		1.00	1.00	8/10/2011	0.00	162.42
54-16	Rural Residential - Environmental Limitations	RESIDENTIAL	1 acre		1.00	1.00	8/10/2011	0.00	252.44
54-17	Rural Residential	RESIDENTIAL	1 acre		1.00	1.00	8/10/2011	0.00	386.11
54-18	Planned Residential *	RESIDENTIAL	5 acres		0.20	0.20	8/10/2011	0.00	574.52
54-19	Agricultural - Residential	RESIDENTIAL	5 acres		0.20	0.20	8/10/2011	0.00	514.34
54-20	Village Commercial	COMMERCIAL	2 acres		0.00	0.00	8/10/2011	0.31	6.97
54-21	Highway Commercial **	COMMERCIAL	2 acres		0.00	0.00	8/10/2011	0.31	51.72
54-22	Marine Commercial - Mullica River	COMMERCIAL	2 acres		0.00	0.00	8/10/2011	0.31	15.07
54-23	Marine Commercial - Nacote Creek	COMMERCIAL	2 acres		0.00	0.00	8/10/2011	0.31	17.90
54-24	Public & Semi-Public	PARK			0.00	0.00	8/10/2011	0.00	37.69
54-25	Campground	PARK	25 acres		0.00	0.00	8/10/2011	0.00	136.94
54-26	Conservation - Recreation	CONSERVATION	5 acres		0.00	0.00	8/10/2011	0.00	1371.71
54-26.1	Pinelands Preservation Area ***	PRESERVATION	1 acre		1.00	1.00	8/10/2011	0.00	1432.40
54-26.2	Pinelands Village Residential	RESIDENTIAL	1 acre		1.00	1.00	8/10/2011	0.00	63.79
54-26.3	Pinelands Village Agricultural ****	AGRICULTURAL	1 acre		1.00	1.00	8/10/2011	0.00	145.32
GSP	Garden State Parkway	TRANSPORTATION			0.00	0.00	8/10/2011	0.00	225.72

*Planned Adult Communities (PACs) permitted on min lot size of 250 acres. No min individual lot size or density requirements in PAC.
 **3 acres required for auto sales/service
 ***Cultural Housing permitted on 1 acre lots.
 ****Minimum of 5 acres for agriculture



NOTE: MUNICIPAL ZONING WITH 2013 AERIAL VIEW
 This map is for demonstration purposes only and was not developed in accordance with National Map Accuracy Standards. Any use of this product with respect to accuracy and precision shall be the sole responsibility of the user. The map was developed in part using New Jersey Department of Environmental Protection Geographic Information System (GIS) digital data. In conjunction with the Atlantic County Office of Geographic Information Systems, but the secondary product has not been verified by NJDEP and its state authorized. The geographic accuracy and precision of the GIS data contained in this map has not been developed nor verified by a professional licensed land surveyor and shall not be nor is intended to be used in matters requiring definition and location of the ground horizontal and/or vertical controls. File: P09Zoning010.mxd 11/15/2011