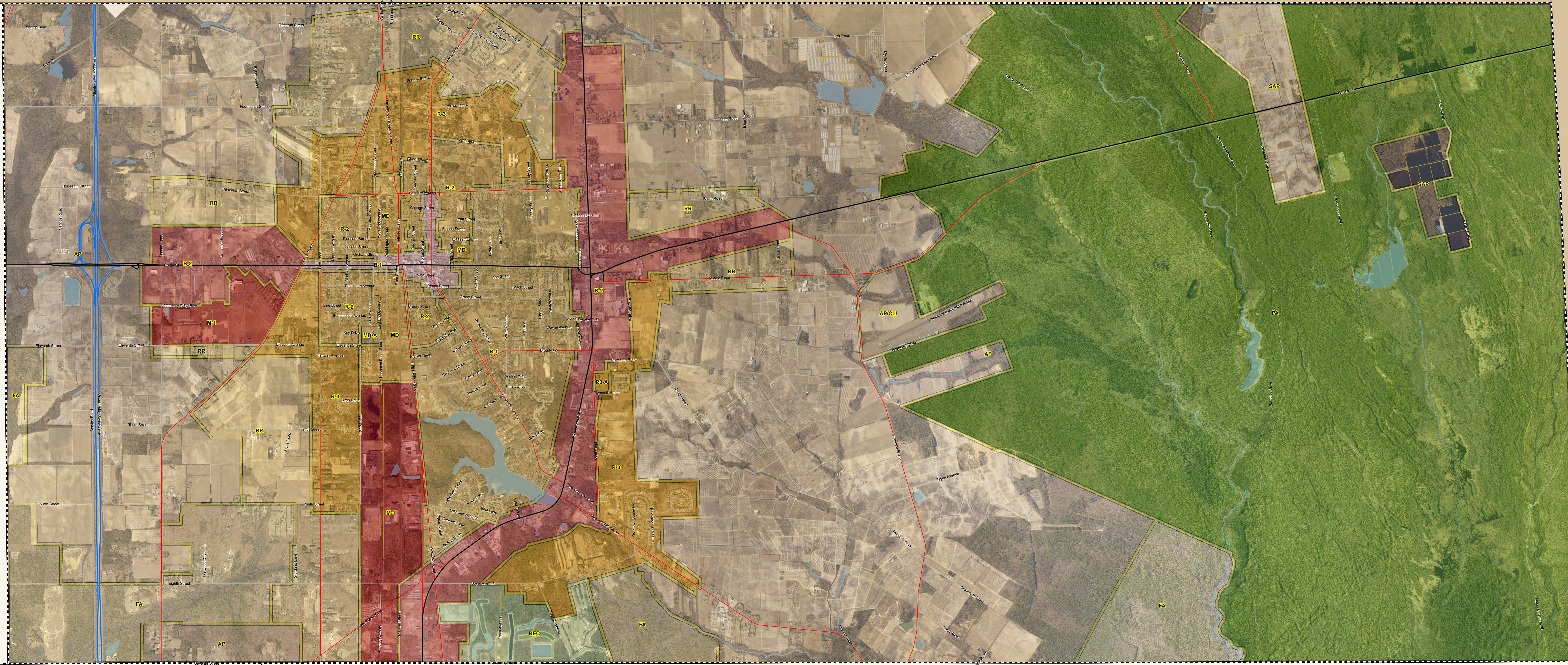
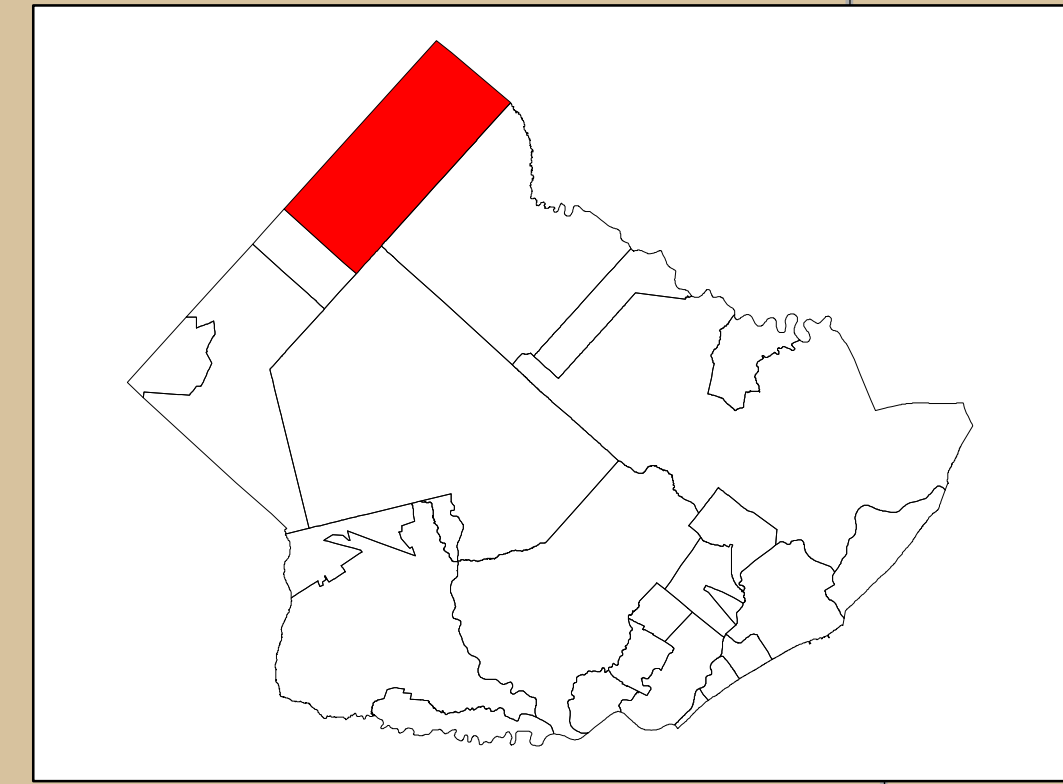


# Hammonton Municipal Zoning Boundaries December 2011 Atlantic County, NJ

CAMDEN



### Legend

**Zoning**

- Agricultural
- Commercial
- Conservation / Wetlands
- Industrial/ Institutional
- Residential
- Water

**Roads & Line Features**

- US & State Highways
- Atlantic City Expressway
- County Routes
- Municipal Streets
- Other
- Alley
- Municipal Boundary
- County Boundary

HAMILTON TOWNSHIP

MULLICA TOWNSHIP

**Hammonton Municipal Zoning**

Zone	Description	Use	Base Lot	Min Lot	Min Density	Max Density	Revision Date	FAR	Total Acres
AP	Agricultural Production***	AGRICULTURAL	3.2 acres		0.10	0.10	6/29/2011	0.00	8688.91
AP/CI	Agricultural Production/Compatible Light Industry	AGRICULTURAL/INDUSTRIAL	5 acres		0.50	0.50	6/29/2011	0.00	168.41
B-1	Town Business	COMMERCIAL	2,500 sf		0.00	0.00	6/29/2011	0.39	105.12
B-2	Highway Business	COMMERCIAL	50,000 sf		0.00	0.00	6/29/2011	0.39	1348.15
FA	Forest Area	RESIDENTIAL	3.2 acres		0.31	0.31	6/29/2011	0.00	1386.51
M-1	Industrial Park	INDUSTRIAL	65,000 sf		0.00	0.00	6/29/2011	0.00	354.10
MD	Mixed Use	RESIDENTIAL	10,000 sf		4.36	4.36	6/29/2011	0.39	186.07
MD-A	Mixed Use Restr./Afford. (Set Aside)	RESIDENTIAL	4,356 sf		10.00	10.00	6/29/2011	0.00	10.89
PA	Preservation Area *	PRESERVATION	3.2 acres		0.31	0.31	6/29/2011	0.00	8768.56
R-1	Residential - 1	RESIDENTIAL	12,500 sf		3.49	3.49	6/29/2011	0.00	1136.85
R-2	Residential - 2	RESIDENTIAL	12,500 sf		3.49	3.49	6/29/2011	0.00	413.78
R-3	Residential - 3**	RESIDENTIAL	25,000 sf		0.76	2.18	6/29/2011	0.00	1312.49
R3-A	Residential (Set Aside)	RESIDENTIAL	7,260 sf		6.00	6.00	6/29/2011	0.00	8.17
REC	Recreation	PARK	10 acres		0.10	0.10	6/29/2011	0.00	251.61
RR	Rural Residential**	RESIDENTIAL	1 acre	20,000 sf	0.76	2.18	6/29/2011	0.00	1637.68
SAP	Special Agricultural Production District***	AGRICULTURAL	3.2 acres		0.00	0.00	6/29/2011	0.00	460.52

\* Min lot size required for low intensity recreation use is 50 acres. Campsites are permitted at densities of 1/2 acres with densities of 6/2 acres when campsites are clustered.  
 \*\*Public Sewer  
 \*\*\*Can go to 1:0 acre size provided applicant meets Pinelands Cultural Housing Requirements.

0.75 0.375 0 0.75 Miles

NOTE: MUNICIPAL ZONING WITH 2013 AERIAL VIEW  
 This map is for demonstration purposes only and was not developed in accordance with National Map Accuracy Standards. Any use of this product with respect to accuracy and precision shall be the sole responsibility of the user. The map was developed, in part, using New Jersey Department of Environmental Protection Geographic Information Systems (GIS) digital data, in cooperation with the Atlantic County Office of Geographic Information Systems, but this secondary product has not been verified by NDEP and is not state approved. The geographic accuracy and precision of the GIS data contained in this map has not been developed nor verified by a professional licensed land surveyor and shall not be relied on for legal purposes. The map is intended for informational purposes only and does not constitute a survey or any other professional service. The geographic accuracy and precision of the GIS data contained in this map has not been developed nor verified by a professional licensed land surveyor and shall not be relied on for legal purposes. File:HAM-Zoning2011.mxd 11/16/2011