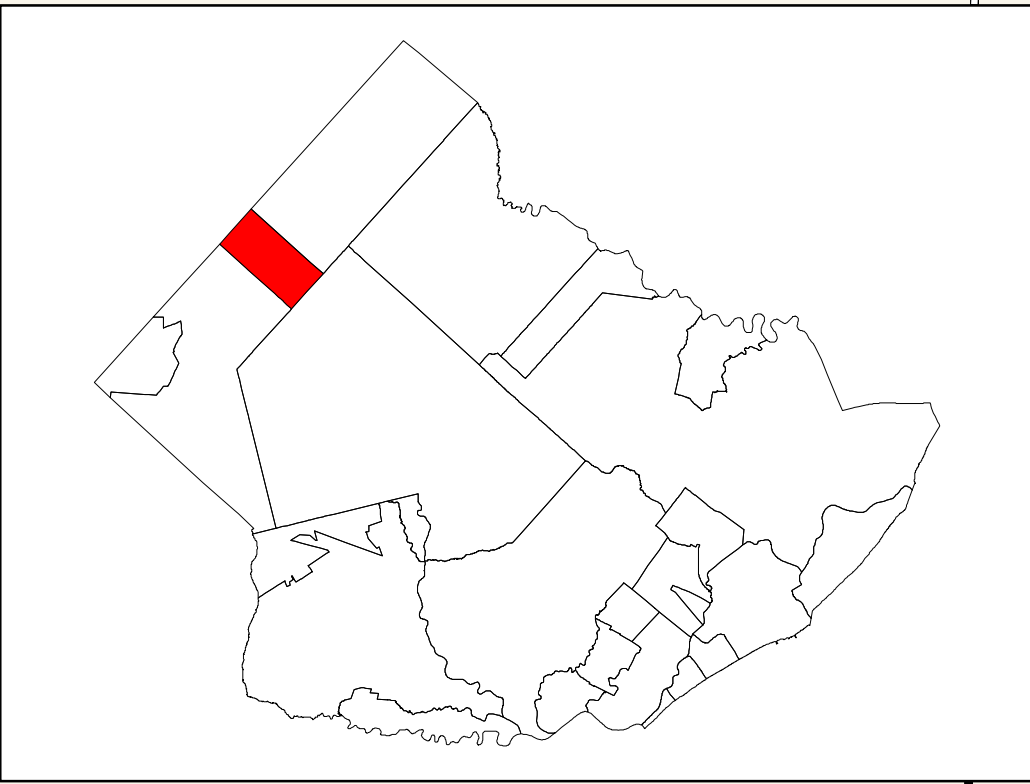
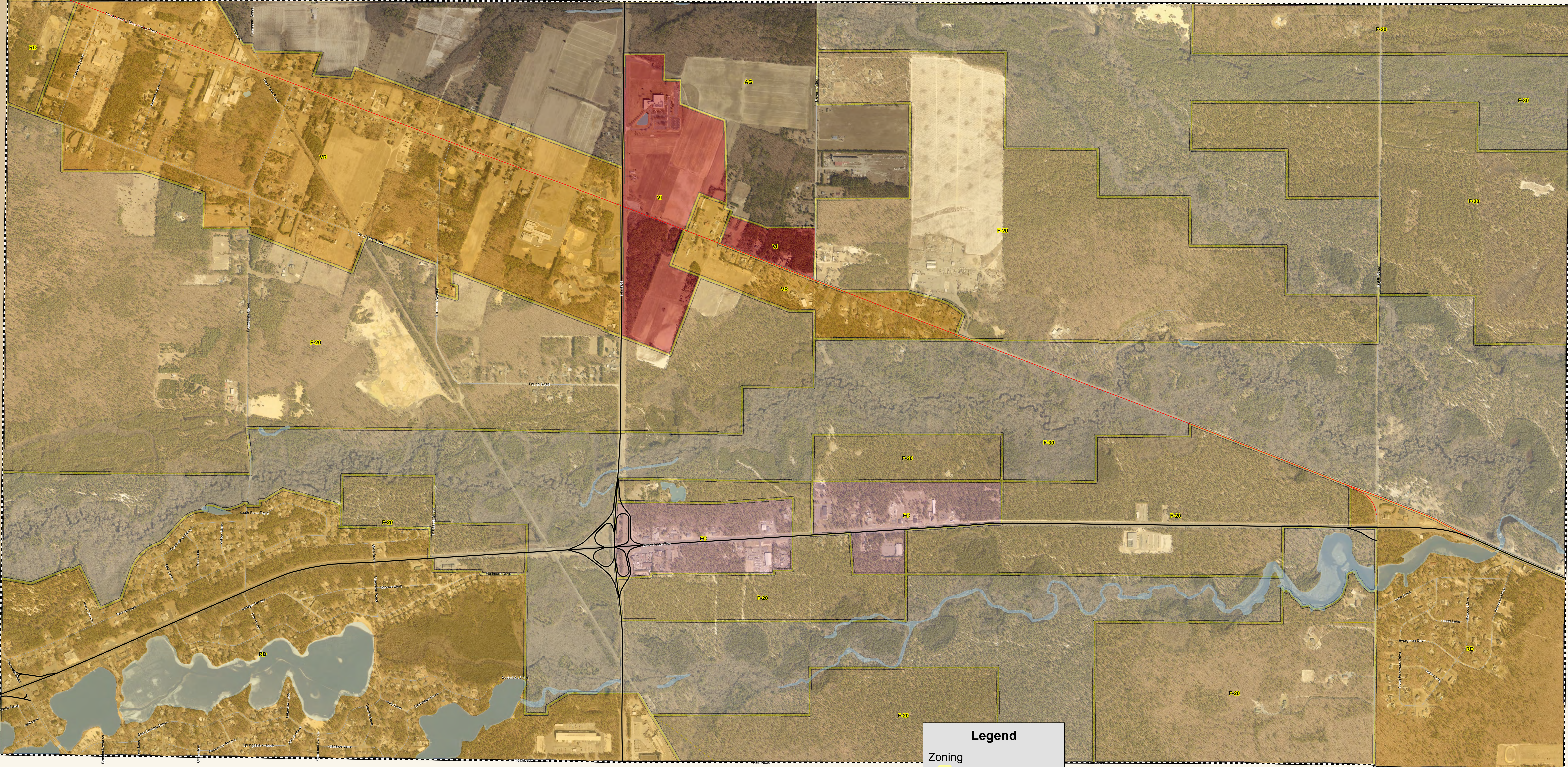


Folsom
Municipal Zoning Boundaries
December 2011
Atlantic County, NJ



HAMMONTON

CAMDEN



GLOUCESTER

Folsom Municipal Zoning

Zone	Description	Use	Base Lot	Min Lot	Min Density	Max Density	Revision Date	FAR	Total Acres
AG	Agricultural	AGRICULTURAL	10 acres		0.10	0.10	10/10/2010	0.00	347.58
F-20	Forest (20 acres)	RESIDENTIAL	20 acres		0.05	0.05	10/10/2010	0.00	2070.89
F-30	Forest (30 Acres)	RESIDENTIAL	30 acres		0.08	0.08	10/10/2010	0.00	1491.56
FC	Forest Commercial	COMMERCIAL	2 acres		0.50	0.50	10/10/2010	0.38	111.54
RD	Rural Development	RESIDENTIAL	5.5 acres		0.18	0.18	10/10/2010	0.00	786.59
VI	Village Industrial	INDUSTRIAL	2 acres		0.50	0.50	10/10/2010	0.00	112.88
VR	Village Residential	RESIDENTIAL	2 acres		0.50	0.50	10/10/2010	0.00	524.89

BUENA VISTA TOWNSHIP

Legend

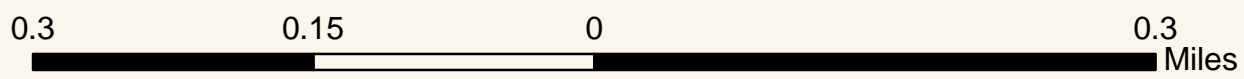
Zoning

Agricultural

 Commercial

 Conservation / Wetlands

Roads & Line Features

 US & State Highways

NOTE: MUNICIPAL ZONING WITH 2013 AERIAL VIEW

This map is for demonstration purposes only and was not developed in accordance with National Map Accuracy Standards. Any use of the product with respect to accuracy and precision shall be the sole responsibility of the user. The map was developed, in part, using New Jersey Department of Environmental Protection Geographic Information System (GIS) digital data, in conjunction with the Atlantic County Office of Geographic Information Systems, but this secondary product has not been verified by NJGIS and is not state authorized. The geospatial accuracy and precision of the GIS data contained in this map has not been developed nor verified by a professional licensed land surveyor and shall not be used in matters requiring delineation and location of true ground horizontal and/or vertical controls. File:PC3_Zoning2013.mxd 11/16/2011