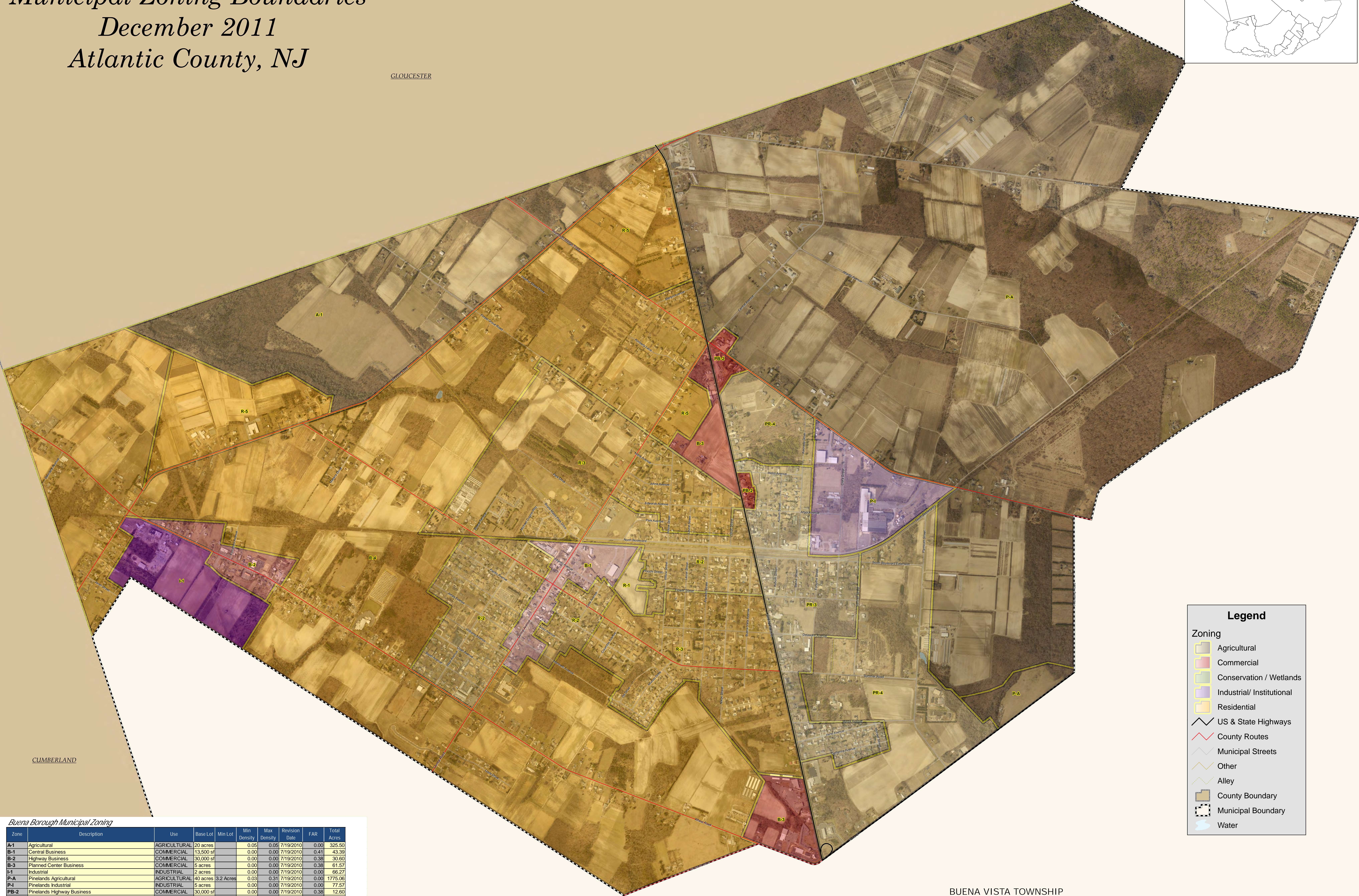
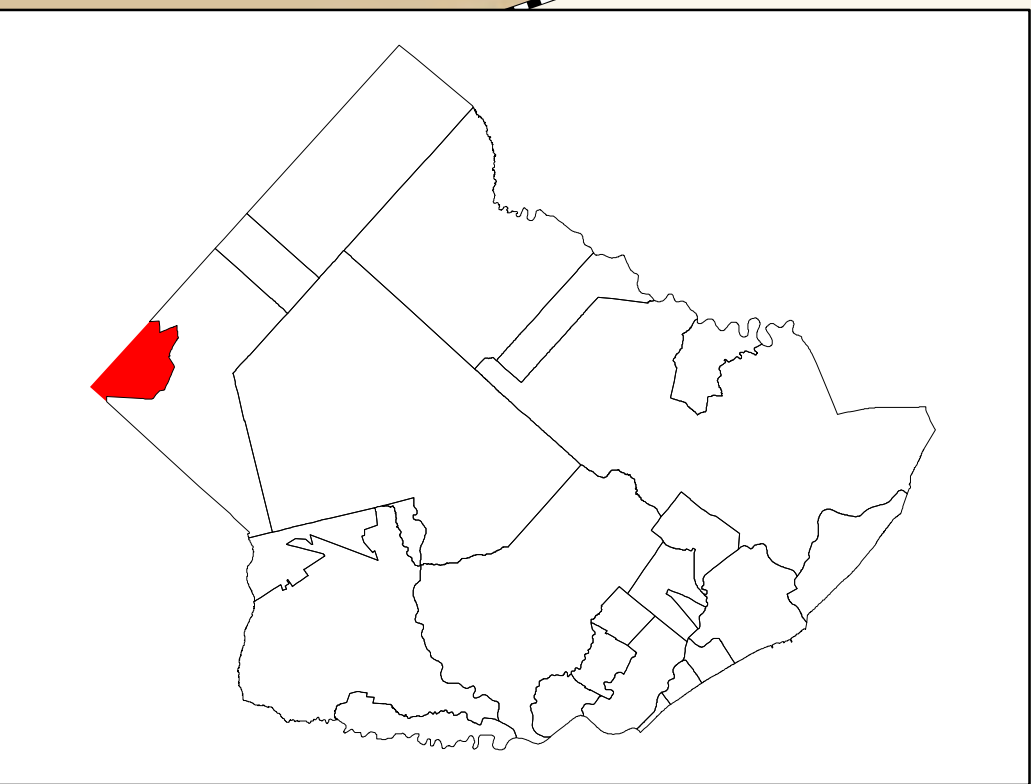


Buena Borough  
Municipal Zoning Boundaries  
December 2011  
Atlantic County, NJ

GLOUCESTER



CUMBERLAND

BUENA VISTA TOWNSHIP

Buena Borough Municipal Zoning

Zone	Description	Use	Base Lot	Min Lot	Min Density	Max Density	Revision Date	FAR	Total Acres
A-1	Agricultural	AGRICULTURAL	20 acres		0.05	0.05	7/19/2010	0.00	325.50
B-1	Central Business	COMMERCIAL	13,500 sf		0.00	0.00	7/19/2010	0.41	43.39
B-2	Highway Business	COMMERCIAL	30,000 sf		0.00	0.00	7/19/2010	0.38	30.60
B-3	Planned Center Business	COMMERCIAL	5 acres		0.00	0.00	7/19/2010	0.38	61.57
I-1	Industrial	INDUSTRIAL	2 acres		0.00	0.00	7/19/2010	0.00	66.27
P-A	Pinelands Agricultural	AGRICULTURAL	40 acres	3.2 Acres	0.03	0.31	7/19/2010	0.00	1775.06
P-I	Pinelands Industrial	INDUSTRIAL	5 acres		0.00	0.00	7/19/2010	0.00	77.57
PB-2	Pinelands Highway Business	COMMERCIAL	30,000 sf		0.00	0.00	7/19/2010	0.38	12.60
PR-3	Pinelands Residential Town 3 (Medium Density)***	RESIDENTIAL	1 acre	15,000 sf	1.00	2.90	7/19/2010	0.00	137.36
PR-4	Pinelands Residential Town 4 (Low Density & Farms) **	RESIDENTIAL	6 acres	22,000 sf	0.17	1.94	7/19/2010	0.00	274.93
R-1	High Density Residential *	RESIDENTIAL	30,000 sf	11,250 sf	1.45	3.87	7/19/2010	0.00	9.90
R-2	Medium Density Residential *	RESIDENTIAL	15,000 sf	11,250 sf	2.90	3.87	7/19/2010	0.00	196.34
R-3	Low Density Residential	RESIDENTIAL	15,000 sf		2.90	2.90	7/19/2010	0.00	381.52
R-4	Lower Density Residential *	RESIDENTIAL	6 acres	22,500 sf	0.17	1.94	7/19/2010	0.00	1274.99
R-5	Lowest Density Residential *	RESIDENTIAL	10 acres	40,000 sf	0.10	1.09	7/19/2010	0.00	179.30

\* Lot Size and density vary with number of families

\*\* Minimum lot size permitted to be reduced with public sewer and water

\*\*\* Minimum Lot Size Required for a single-family dwelling unit as part of a farm

Legend

Zoning

Agricultural

Commercial

Conservation / Wetlands

Industrial/ Institutional

Residential

US & State Highways

County Routes

Municipal Streets

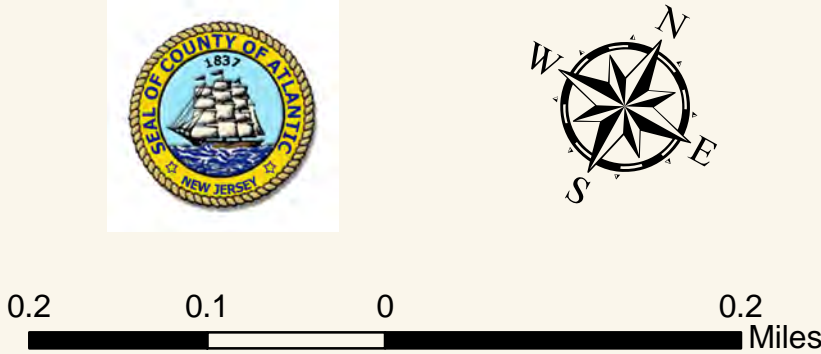
Other

Alley

County Boundary

Municipal Boundary

Water



NOTE: MUNICIPAL ZONING WITH 2013 AERIAL VIEW

This map is for demonstration purposes only and was not developed in accordance with National Map Accuracy Standards. Any use of this product with respect to accuracy and precision shall be the sole responsibility of the user. The map was developed, in part, using New Jersey Department of Environmental Protection Geographic Information System (GIS) digital data, in conjunction with the Atlantic County Office of Geographic Information Systems, but the secondary product has not been verified by NJDEP and is not state authorized.

The geographic accuracy and precision of the GIS data contained in this map has not been developed nor verified by a professional and is not intended to be used in matters requiring delineation and location of line, ground, horizontal and/or vertical controls. File: BBO-Zoning2010.mxd 11/15/2011