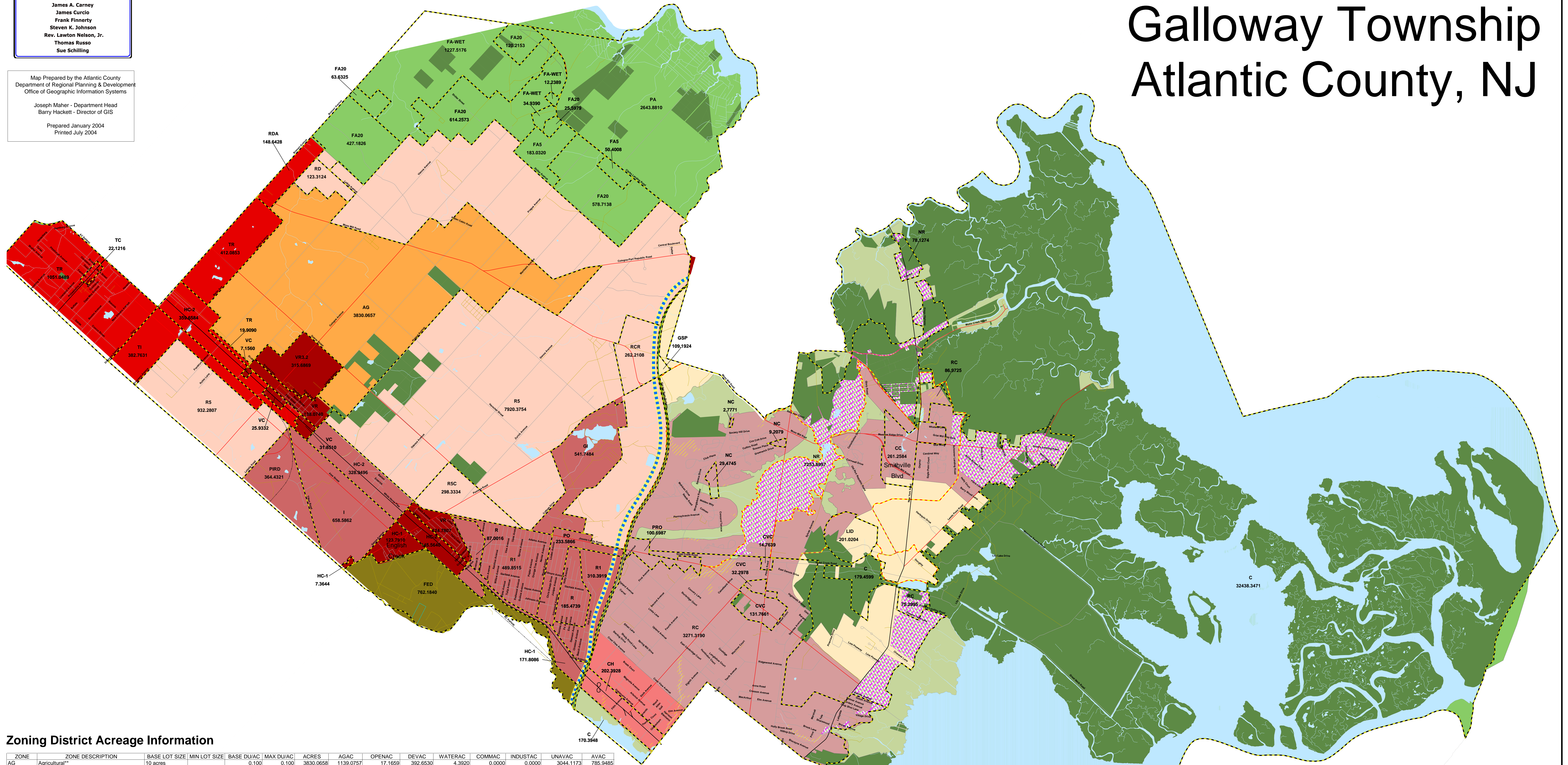


C.A. III Municipal Zoning Galloway Township Atlantic County, NJ

Dennis Levinson, County Executive
Helen W. Walsh, County Administrator
Atlantic County Board of Freeholders
 Joseph F. Silipens, Chairman
 John W. Risley, Jr., Vice Chairman
 James A. Carney
 James Curcio
 Frank Finnerty
 Steven K. Johnson
 Rev. Lawton Nelson, Jr.
 Thomas Russo
 Sue Schilling

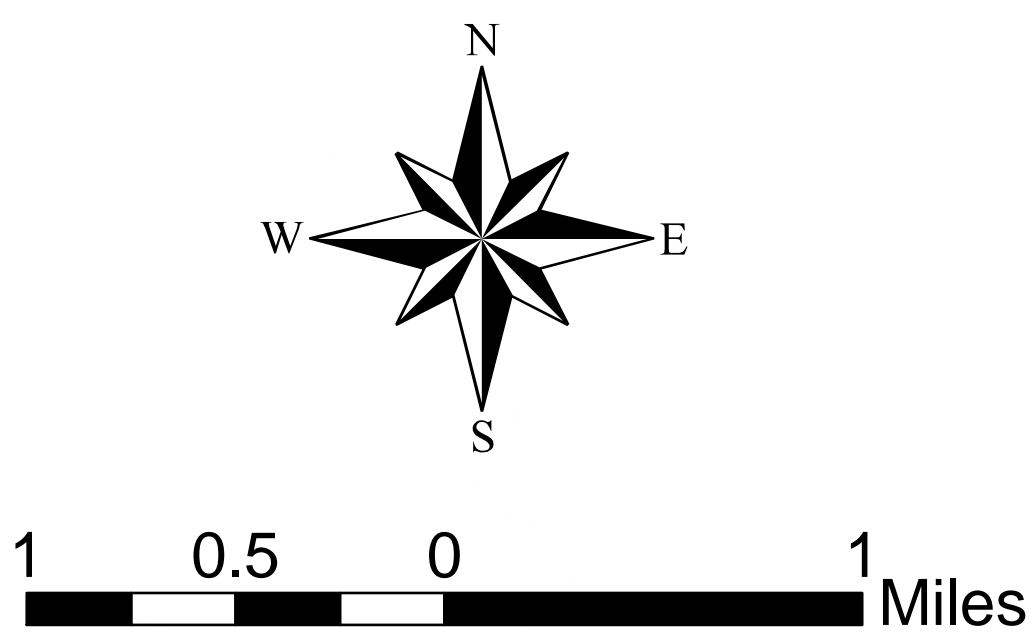
Map Prepared by the Atlantic County
 Department of Regional Planning & Development
 Office of Geographic Information Systems
 Joseph Maher - Department Head
 Barry Hackett - Director of GIS
 Prepared January 2004
 Printed July 2004



Zoning District Acreage Information

ZONE	ZONE DESCRIPTION	BASE LOT SIZE	MIN LOT SIZE	BASE DU/AC	MAX DU/AC	ACRES	AGAC	OPENAC	DEVAC	WATERAC	COMM	INDUST	UNIVAC	AVAC
AG	Agricultural**	10 acres		0.100	0.100	3830.0658	1139.0757	17.1659	392.6530	4.3920	0.0000	0.0000	3044.1173	785.9485
C	Conservation	5 acres		0.200	0.200	32788.2013	3.7414	21538.1079	198.2132	9073.2242	0.0000	0.0000	32655.0718	135.1930
CC	Community Commercial****	10,000 sf	35,000 sf	1.250	4.000	261.2584	4.5613	0.0000	201.6889	5.6541	45.2862	0.0000	215.9722	45.2862
CH	Commercial Highway****	20,000 sf		0.000	0.000	202.3928	0.0000	0.0000	119.2492	1.2364	35.4581	0.0000	166.9347	35.4581
CVC	Community Village Commercial	20,000 sf		0.000	0.000	178.8278	2.5260	0.0000	80.0378	0.0000	92.1972	0.0000	86.6306	92.1972
FAWET	Forest Area	45 acres		0.020	0.020	1274.6956	20.9027	0.0000	10.8761	1.2528	0.0000	0.0000	1161.7638	112.9318
FA20	Forest Area*	20 acres	1 acre	0.050	1.000	1829.6020	29.1103	0.1159	85.6348	0.3570	0.0000	0.0000	718.4040	1111.1980
FA5	Forest Area*	5 acres	1 acre	0.200	1.000	233.4327	0.0000	0.0023	51.1041	0.0000	0.0000	0.0000	103.4965	129.9362
FED	F.A.A. Tech. Center	none		0.000	0.000	762.1811	0.0000	743.9880	9.1518	0.0000	0.0000	0.0000	757.0058	5.1755
GI	Government Institution	2 acres		0.000	0.000	541.7472	0.0000	0.0000	115.2160	48.8349	0.0000	0.0000	373.2117	168.9353
GSP	Garden State Parkway	none		0.000	0.000	109.1924	0.0000	0.0000	36.6640	0.0268	0.0000	0.0000	46.7639	62.4284
HC-1	Highway Commercial-1	1.15 acre		0.000	0.000	302.9677	14.1149	14.0699	123.7674	0.0000	124.6448	0.0000	178.3230	124.6448
HC-2	Highway Commercial-2	2 acres		0.000	0.000	834.1674	98.2883	0.1356	242.2857	2.1675	194.4745	0.0000	639.6929	194.4745
I	Industrial			0.000	0.000	658.5848	31.2696	0.0000	85.3503	0.2991	0.0000	431.1779	227.4068	431.1779
LID	Conditional Industrial	5 acres		0.000	0.000	201.0197	0.0000	1.1476	61.5420	0.0000	0.0000	130.9228	70.0968	130.9228
NC	Neighborhood Commercial	0.000		0.000	0.000	41.4595	0.0000	0.0000	0.7204	0.0000	30.2596	0.0000	11.3339	30.2596
NR	Neighborhood Residential	2 acres		0.500	0.500	7332.0599	132.7031	430.7266	1812.0737	64.4264	0.0000	0.0000	4525.4323	2806.5940
PA	Preservation Area	3.2 acres		0.300	0.300	2643.8810	20.8936	343.1438	32.5720	251.1210	0.0000	0.0000	2619.2805	24.6005
PIRD	Planned Industrial Residential Development	3.2 acres	1 acre	0.300	8.000	364.4321	3.7278	0.0000	127.2895	5.9629	0.0000	113.0342	251.3979	113.0342
PO	Professional Offices	1.15 acre		0.000	0.000	233.5940	0.0000	0.0000	22.9071	0.0000	157.8997	0.0000	76.4943	157.8997
PRO	Professional Office	50,000 sf		0.000	0.000	100.6987	8.0716	0.0000	46.8603	0.0000	45.2736	0.0000	55.4251	45.2736
R	Residential	0.14 acre		7.000	7.000	272.4771	0.0000	0.0000	6.3394	0.0000	0.0000	0.0000	20.5395	251.9376
R1	Residential	0.14 acre		7.000	7.000	892.2419	0.0000	0.0000	379.9555	0.0000	0.0000	0.0000	406.0330	394.2088
RS	Residential	5 acres		0.200	0.200	8852.6615	1294.9760	51.1605	915.8963	37.8105	0.0000	0.0000	5507.9458	3344.7157
RSC	Rural Development Cluster	10 acres		0.200	0.200	298.3289	39.3051	0.0000	14.3740	0.0000	0.0000	0.0000	54.0800	244.2489
RC	Residential Compatibility	2 acres	1 acre	0.500	1.000	3433.5804	14.8350	88.8137	1710.9937	0.0277	0.0000	0.0000	2104.8974	1326.7031
RCR	Roseton Commercial Rural	5 acres		0.000	0.000	282.2108	0.0000	0.0000	33.0883	0.0000	185.2603	0.0000	76.9505	185.2603
RD	Recreation Development	5 acres		0.000	0.000	123.3124	55.2606	0.0000	5.8507	0.0000	0.0000	0.0000	82.6846	40.6278
RDA	Resort Development Area	10 acres		0.000	0.000	148.6428	46.6465	0.0000	6.8533	0.0000	0.0000	0.0000	105.1210	43.5218
TC	Town Commercial***	0.3 acres		0.000	0.000	22.1216	0.0000	0.0000	17.9637	0.0000	3.2659	0.0000	18.9157	3.2659
TI	Town Industrial	5 acres		0.000	0.000	382.7377	17.1473	0.0000	52.6992	1.1674	134.6822	134.6822	248.0915	134.6822
TR	Town Residential***	1 acres	0.27 acres	1.000	3.630	1483.0485	121.4433	3.3083	297.5974	8.7728	0.0000	0.0000	1205.3174	277.7212
VC	Village Commercial***	0.3 acres		0.000	0.000	64.9402	0.9161	0.0000	38.0775	0.0000	8.6963	0.0000	56.2459	8.6963
VR	Village Residential***	1 acres	0.27 acres	1.000	3.630	262.8540	17.9939	0.0000	177.1459	0.0000	0.0000	0.0000	197.8744	64.9796
VR3.2	Residential	3.2 acres		0.300	0.300	315.8885	158.2016	0.0000	51.1472	0.0000	0.0000	0.0000	223.2560	92.4305
TOTALS				0.000	0.000	71447.2981	3274.7137	23228.8861	7563.9182	9506.6351	1056.4943	872.2455	59162.3418	13157.2027

* Single family dwelling units are permitted on 1 acre and 3.2 acre lots.
 ** Single family dwelling units are permitted on 3.2 acres. Single family dwelling units are permitted on 1 acre lots at a density of 1 du/40 acres if clustering is utilized.
 *** Minimum lot size for single family dwelling units without public water/sewer is 12,000 sf or 3.63 du/acre.
 **** Single family dwelling units are permitted on 1 acre and 3.2 acre lots.
 ***** Single family dwelling units are permitted on 3.2 acres. Single family dwelling units are permitted on 1 acre lots at a density of 1 du/40 acres if clustering is utilized



This map is for demonstration purposes only and was not developed in accordance with National Map Accuracy Standards. Any use of this product with respect to accuracy and precision shall be the sole responsibility of the user. The map was developed, in part, using New Jersey Department of Environmental Protection Geographic Information System (GIS) digital data, in conjunction with the Atlantic County Office of Geographic Information Systems, but this secondary product has not been verified by NJDEP and is not state certified.
 The geographic accuracy and precision of the GIS data contained in this map has not been developed nor verified by a professional licensed land surveyor and shall not be used nor is intended to be used in matters requiring determination and location of true ground horizontal and/or vertical controls.
 Map Document: gdi.mxd 4/1/2004

Legend

- Zoning**: Dashed yellow line
- Pinelands/CAFRA Boundary**: Dashed blue line
- Area in Question**: Yellow shaded area
- Critical Environmental Sites**: Yellow hatched area
- Center Boundaries**: Dashed orange line
- Roadways and Line Features**:
 - GS Parkway: Solid blue line
 - AC Expressway: Solid red line
 - State Highways: Solid orange line
 - County Routes: Solid yellow line
 - Municipal Streets: Solid light blue line
 - Other: Solid light green line
 - Alley: Dashed light blue line
 - Railroad: Solid black line
 - Power Line: Solid black line
 - Airport: Solid black line
 - Streams: Solid blue line
- State Planning Area**:
 - Parks and Natural Areas: Green
 - Env. Sensitive Barrier Is: Light green
 - Environmentally Sensitive: Yellow-green
 - Fringe: Yellow
 - Metropolitan: Orange
 - Military: Red
 - Rural: Light orange
 - Rural Env. Sensitive: Yellow
 - Suburban: Light blue
 - Water: Blue
- Pinelands Management Area**:
 - Agricultural Production Area: Yellow
 - Federal or Military Facility: Orange
 - Forest Area: Green
 - Pinelands Town: Red
 - Pinelands Village: Red
 - Preservation Area: Green
 - Rural Development Area: Yellow
 - Special AG Production Area: Yellow