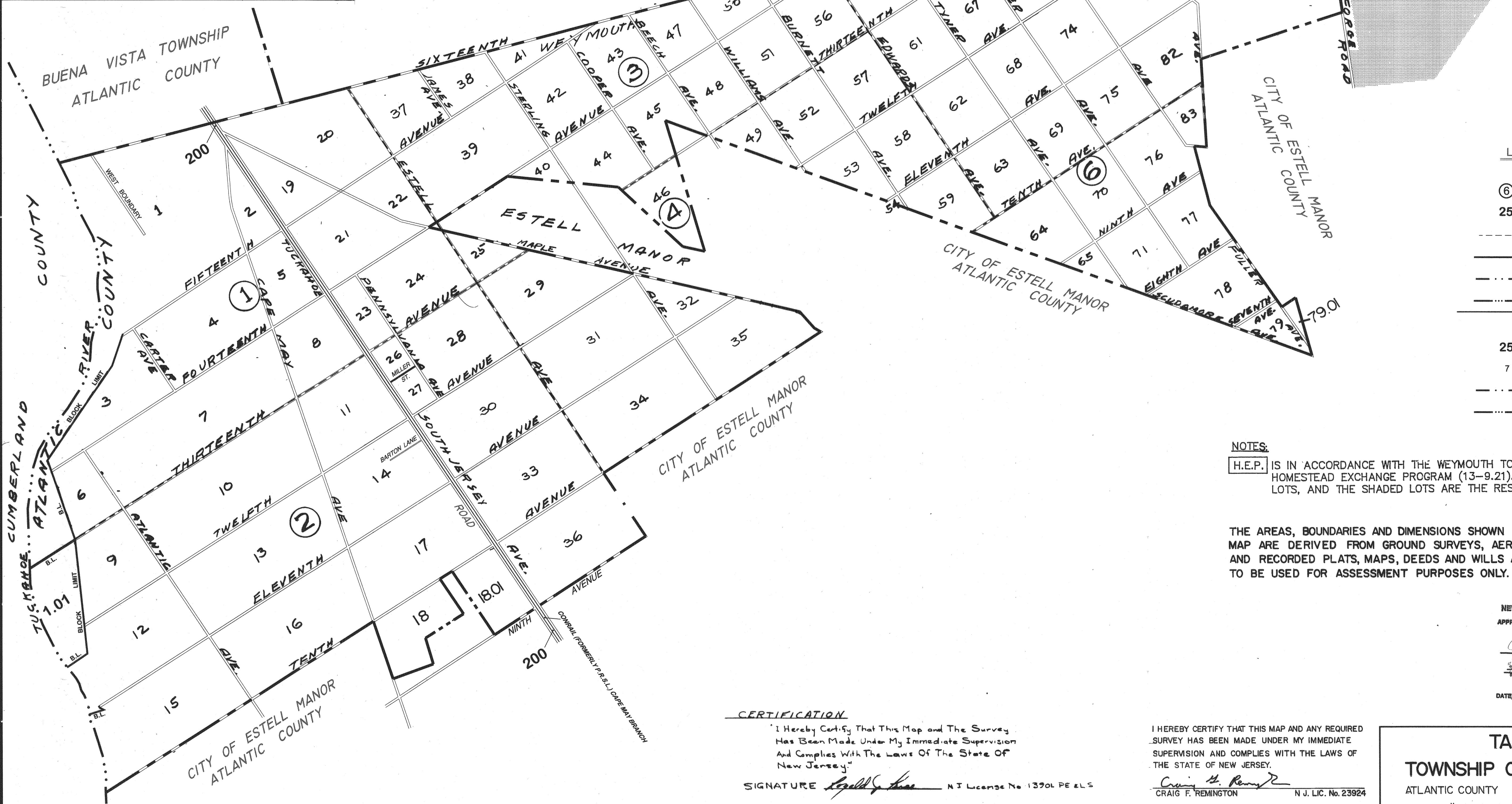


REVISIONS			
DATE	NAME	LIC No	INITIALS
DEC 1994	REMINGTON & VERNICK ENGINEERS CRAIG F. REMINGTON	23924	CFR
DEC 1995	REMINGTON & VERNICK ENGINEERS CRAIG F. REMINGTON	23924	CFR
APRIL 1996	REMINGTON & VERNICK ENGINEERS CRAIG F. REMINGTON	23924	CFR
NOV 1996	REMINGTON & VERNICK ENGINEERS CRAIG F. REMINGTON	23924	CFR
DEC. 1997	REMINGTON & VERNICK ENGINEERS CRAIG F. REMINGTON	23924	CFR
MAR. 2009	J MICHAEL FRALINGER	29350	JMF
JAN. 2010	CHARLES M. FRALINGER	GS37944	CMF
DEC. 2013	CHARLES M. FRALINGER	GS37944	CMF
DEC. 2014	CHARLES M. FRALINGER	GS37944	CMF



- LEGEND
- KEY SHEET
- ⑥ DETAIL SHEET NUMBER
  - 25 BLOCK NUMBER
  - SHEET LIMIT
  - BLOCK LIMIT
  - - - MUNICIPAL BOUNDARY LINE
  - .... COUNTY BOUNDARY LINE
- DETAIL SHEET
- 25 BLOCK NUMBER
  - 7 LOT NUMBER
  - - - MUNICIPAL BOUNDARY LINE
  - .... COUNTY BOUNDARY LINE

NOTES:

H.E.P. IS IN ACCORDANCE WITH THE WEYMOUTH TOWNSHIP HOMESTEAD EXCHANGE PROGRAM (13-9.21). DEVELOPABLE LOTS, AND THE SHADED LOTS ARE THE RESTRICTED LOTS.

THE AREAS, BOUNDARIES AND DIMENSIONS SHOWN ON THIS MAP ARE DERIVED FROM GROUND SURVEYS, AERIAL SURVEYS, AND RECORDED PLATS, MAPS, DEEDS AND WILLS AND ARE TO BE USED FOR ASSESSMENT PURPOSES ONLY.

NEW JERSEY DEPARTMENT OF THE TREASURY  
DIVISION OF TAXATION  
APPROVED AS A TAX MAP PURSUANT TO THE AUTHORITY OF  
N.J.S.A. 54:1-16 AND N.J.S.A. 54:5B-4  
FOR THE DIRECTOR, DIVISION OF TAXATION  
*John P. Miller, CTA, Chief, Valuation and Mapping*  
*William A. Fields, Principal Field Representative*  
DATE MAY 09 2014 SERIAL NO. 1059

CERTIFICATION

"I Hereby Certify That This Map and The Survey Has Been Made Under My Immediate Supervision And Complies With The Laws Of The State Of New Jersey."

SIGNATURE *Charles M. Fralinger* N.J. License No. 13904 PE ELS

I HEREBY CERTIFY THAT THIS MAP HAS BEEN REVISED UNDER MY IMMEDIATE SUPERVISION AND COMPLIES WITH THE LAWS OF THE STATE OF NEW JERSEY.

*John M. Fralinger*  
JOHN M. FRALINGER, P.E., P.L.S., LIC. #29350

I HEREBY CERTIFY THAT THIS MAP AND ANY REQUIRED SURVEY HAS BEEN MADE UNDER MY IMMEDIATE SUPERVISION AND COMPLIES WITH THE LAWS OF THE STATE OF NEW JERSEY.

*Craig F. Remington*  
CRAIG F. REMINGTON N.J. LIC. No. 23924

I HEREBY CERTIFY THAT THIS MAP HAS BEEN REVISED UNDER MY IMMEDIATE SUPERVISION AND COMPLIES WITH THE LAWS OF THE STATE OF NEW JERSEY.

*Charles M. Fralinger*  
CHARLES M. FRALINGER, P.E., P.L.S., LIC. #29350

TAX MAP

TOWNSHIP OF WEYMOUTH

ATLANTIC COUNTY NEW JERSEY

SCALE: 1" = 1200'

JANUARY 2010

CRAIG F. REMINGTON

PROFESSIONAL LAND SURVEYOR & PLANNER  
NEW JERSEY LICENSE NO. 23924  
845 NORTH MAIN STREET  
PLEASANTVILLE, NEW JERSEY 08232

TO SHOW CONDITIONS AS OF: DECEMBER 2014

THIS SHEET IS A SCANNED COPY OF THE TAX MAP ORIGINALLY PREPARED BY CRAIG F. REMINGTON TOWNSHIP ENGINEER, DATED: APRIL 1996. THE ORIGINAL APPROVED MAP IS ON FILE IN THE OFFICE OF THE TOWNSHIP ENGINEER.