

SHEET 54

NOTE: THIS SHEET HAS BEEN DRAWN USING COMPUTER AIDED DRAFTING/DESIGN (CADD) AND COORDINATE GEOMETRY (COGO).

REVISIONS		
DATE	NAME	NO.

CITY OF MARGATE
COUNTY OF ATLANTIC

FREMONT AVENUE

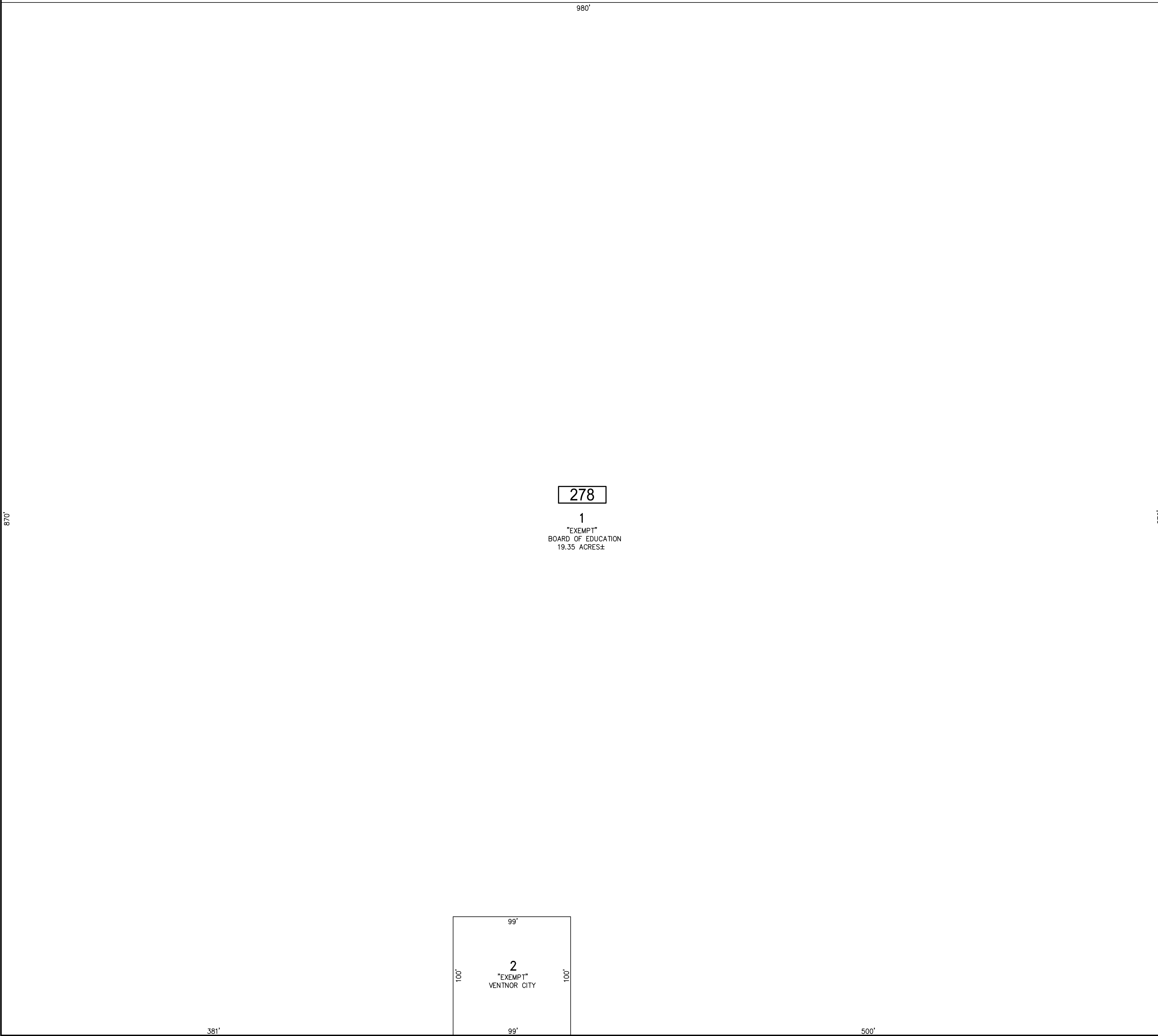
AVENUE

FREDERICKSBURG

AMHERST AVENUE

25' 25'

870'



278

1
"EXEMPT"
BOARD OF EDUCATION
19.35 ACRES±

2
"EXEMPT"
VENTNOR CITY

50' BALFOUR AVENUE 50'

50' BALFOUR AVENUE 50'

WASHINGTON AVENUE

WALDEN DRIVE

WINDSOR DRIVE

SHEET 39

AVENUE

LAFAYETTE

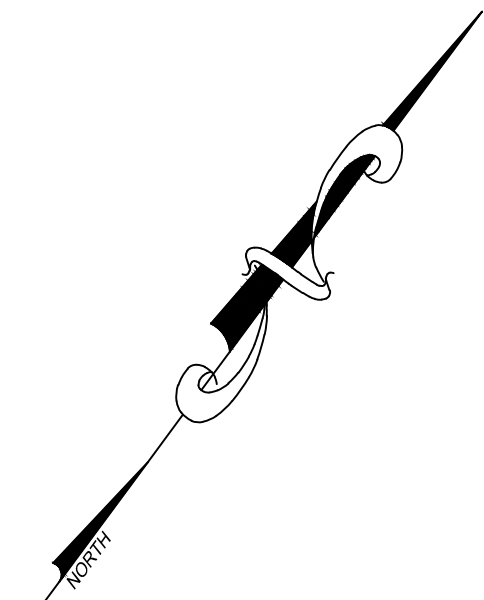
80'

80'

FULTON AVENUE

ESSEX COURT

SHEET 44



"THIS TAX MAP SHEET HAS BEEN DIGITALLY REVISED USING COMPUTER-AIDED DRAFTING/DESIGN (CADD) & COORDINATE GEOMETRY (COGO). IT IS BASED ON THE ORIGINAL DIGITALLY DRAWN TAX MAP PLATE BEARING THE OFFICIAL NEW JERSEY DIVISION TAXATION APPROVAL STAMP WITH APPROVAL DATE JULY, 20, 2016. SERIAL NUMBER 1070 AND SIGNATURE OF JUDY P. MILLER, CTA, CHIEF PROPERTY ADMINISTRATION AND SHELLY REILLY, CTA, PRINCIPAL FIELD REPRESENTATIVE. THE ORIGINAL DIGITALLY DRAWN TAX MAP PLATE WITH THE OFFICIAL APPROVAL STAMP IS ON FILE WITH REMINGTON & VERNICK ENGINEERS."

TAX MAP
CITY OF VENTNOR

ATLANTIC COUNTY NEW JERSEY
SCALE: 1" = 50' DATE: 2-19-2015

CHARLES E. ADAMSON NJ PROFESSIONAL LAND SURVEYOR LIC. NO. 42627



REMINGTON, VERNICK & WALBERG ENGINEERS

845 N. MAIN STREET, PLEASANTVILLE, NJ 08232
(609) 645-7100, FAX (609) 645-7076

WEB SITE ADDRESS: WWW.RVW.COM

TO SHOW CONDITIONS AS OF 2-03-2023