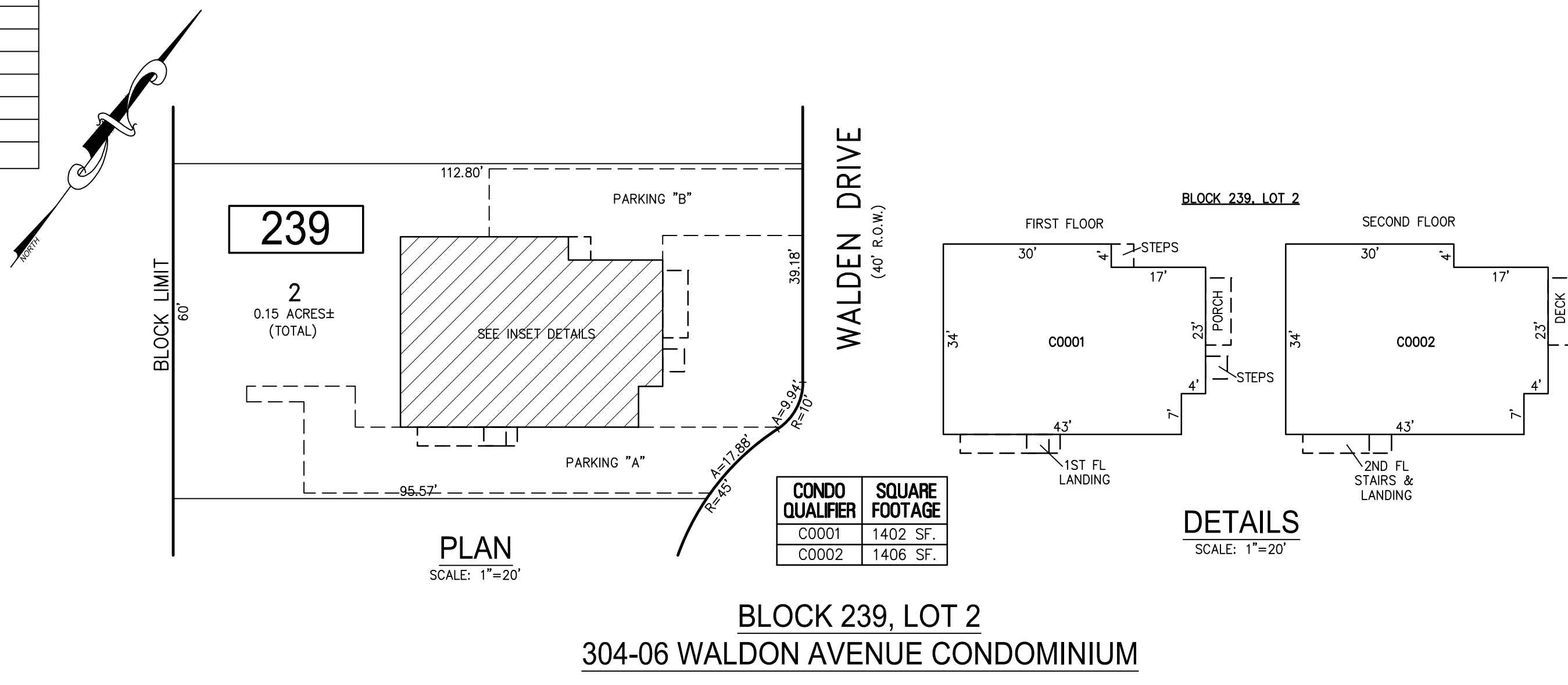


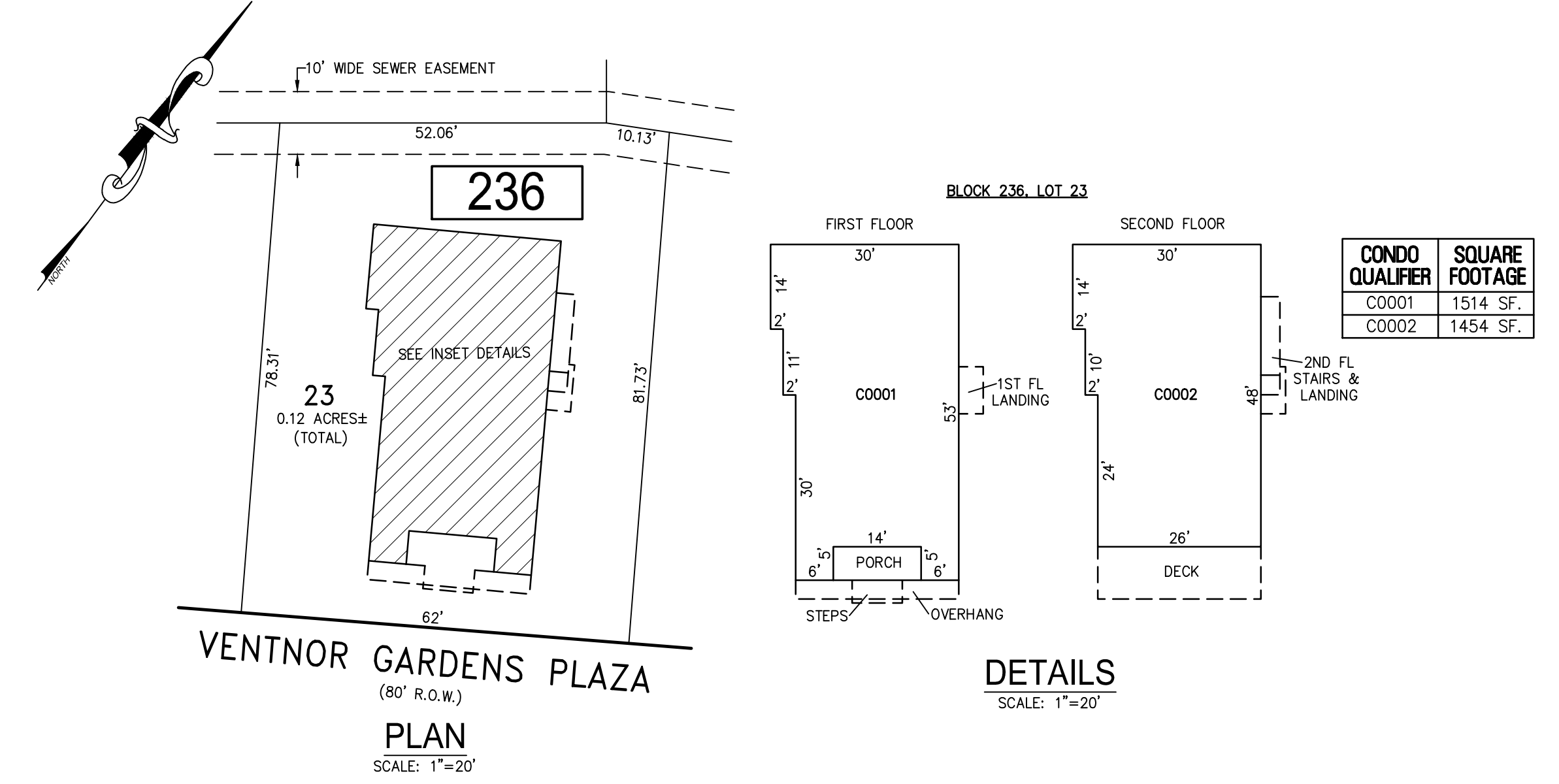
REVISIONS		
DATE	NAME	NO.

NOTE:
THIS SHEET HAS BEEN DRAWN USING COMPUTER AIDED DRAFTING/DESIGN (CAD/D) AND COORDINATE GEOMETRY (COGO).



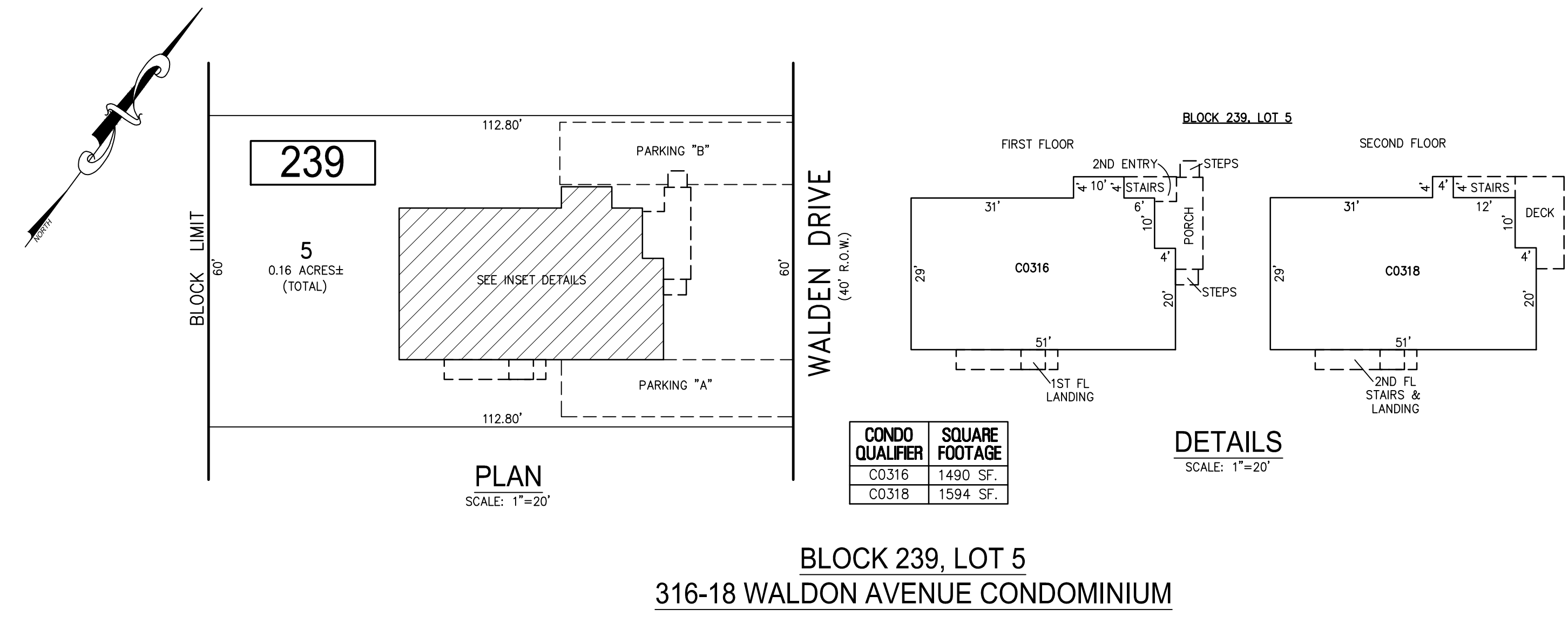
CONDO QUALIFIER	SQUARE FOOTAGE
C0001	1402 SF.
C0002	1406 SF.

BLOCK 239, LOT 2
304-06 WALDON AVENUE CONDOMINIUM



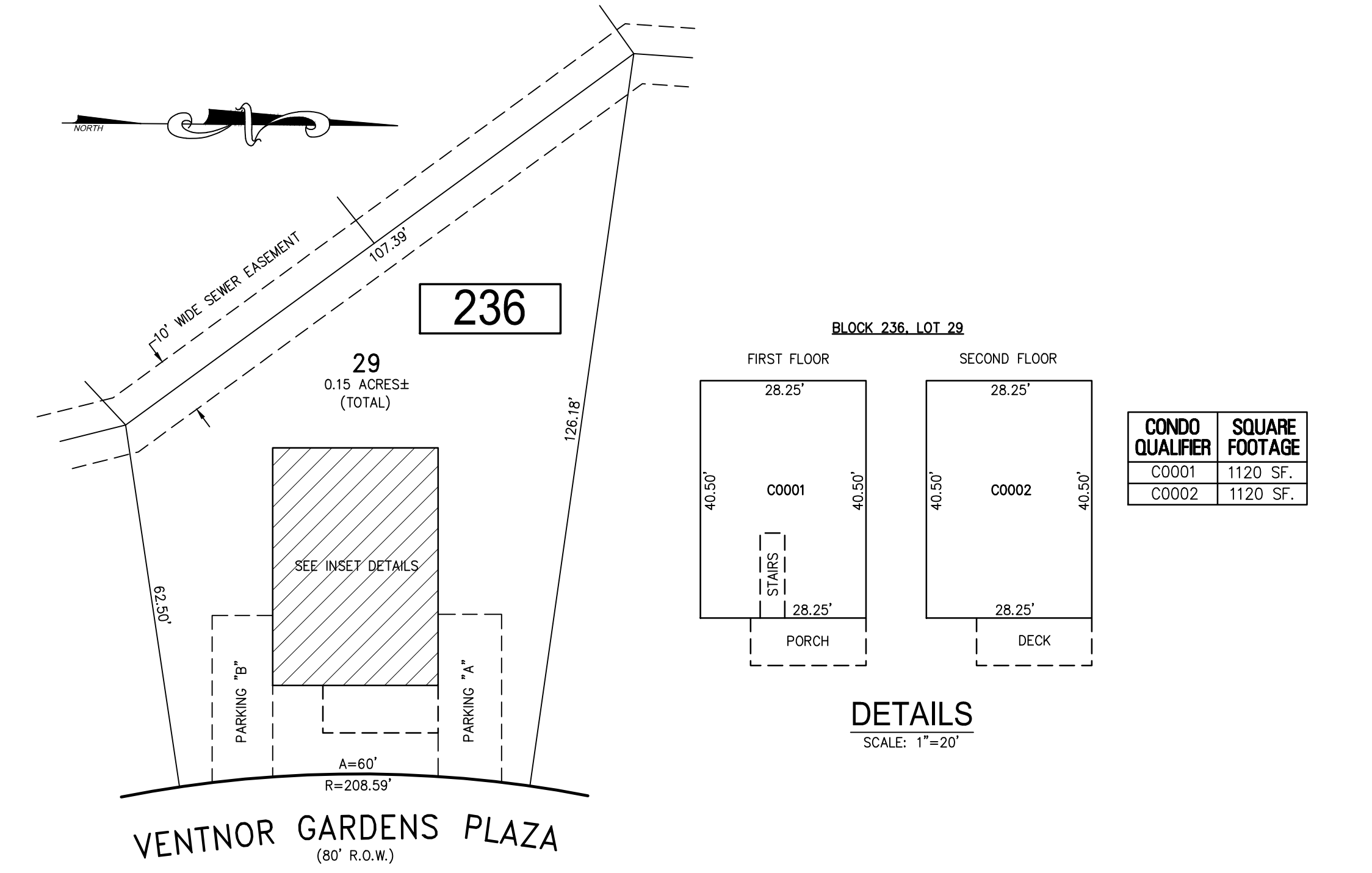
CONDO QUALIFIER	SQUARE FOOTAGE
C0001	1514 SF.
C0002	1454 SF.

BLOCK 236, LOT 23
7013-15 CALVERT AVENUE CONDOMINIUM



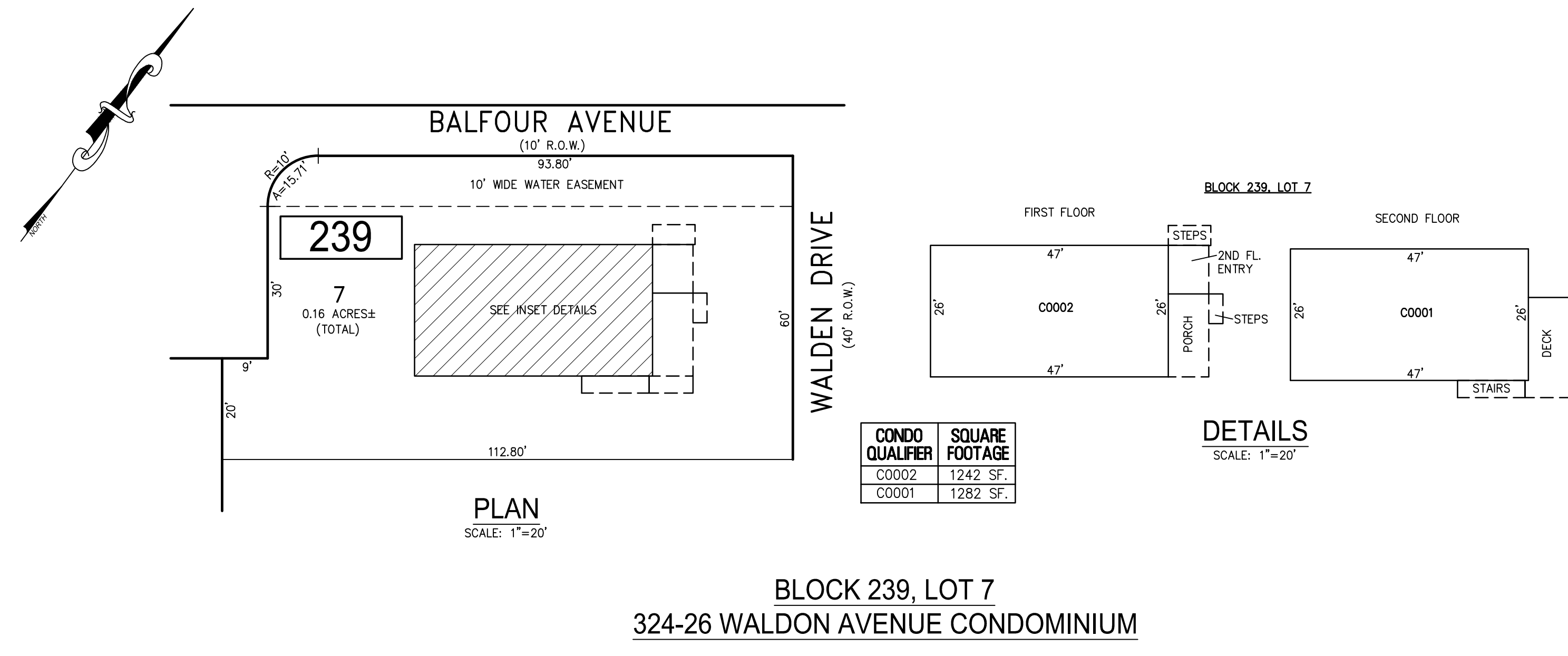
CONDO QUALIFIER	SQUARE FOOTAGE
C0316	1490 SF.
C0318	1594 SF.

BLOCK 239, LOT 5
316-18 WALDON AVENUE CONDOMINIUM



CONDO QUALIFIER	SQUARE FOOTAGE
C0001	1120 SF.
C0002	1120 SF.

BLOCK 236, LOT 29
7037-39 VENTNOR GARDENS PLAZA CONDOMINIUM



CONDO QUALIFIER	SQUARE FOOTAGE
C0002	1242 SF.
C0001	1282 SF.

BLOCK 239, LOT 7
324-26 WALDON AVENUE CONDOMINIUM

- BLOCK 236, LOT 23
- BLOCK 236, LOT 29
- BLOCK 239, LOT 2
- BLOCK 239, LOT 5
- BLOCK 239, LOT 7
- SEE SHEET 39

"THIS TAX MAP SHEET HAS BEEN DIGITALLY REVISED USING COMPUTER-AIDED DRAFTING/DESIGN (CADD) & COORDINATE GEOMETRY (COGO). IT IS BASED ON THE ORIGINAL DIGITALLY DRAWN TAX MAP PLATE BEARING THE OFFICIAL NEW JERSEY DIVISION TAXATION APPROVAL STAMP WITH APPROVAL DATE JULY, 20, 2016. SERIAL NUMBER 1070 AND SIGNATURE OF JUDY P. MILLER, C.T.A. CHIEF PROPERTY ADMINISTRATION AND SHELLY REILLY, C.T.A. PRINCIPAL FIELD REPRESENTATIVE. THE ORIGINAL DIGITALLY DRAWN TAX MAP PLATE WITH THE OFFICIAL APPROVAL STAMP IS ON FILE WITH REMINGTON & VERNICK ENGINEERS."

TAX MAP
CITY OF VENTNOR
ATLANTIC COUNTY NEW JERSEY
SCALE: NOTED DATE: 2-19-2015

CHARLES E. ADAMSON NJ PROFESSIONAL LAND SURVEYOR LIC. NO. 42627
24 GA 28048700

RV & W **REMINGTON, VERNICK & WALBERG ENGINEERS**
845 N. MAIN STREET, PLEASANTVILLE, N.J. 08232
(609) 645-7100, FAX (609) 645-7076
WEB SITE ADDRESS: WWW.RVW.COM
TO SHOW CONDITIONS AS OF 2-03-2023