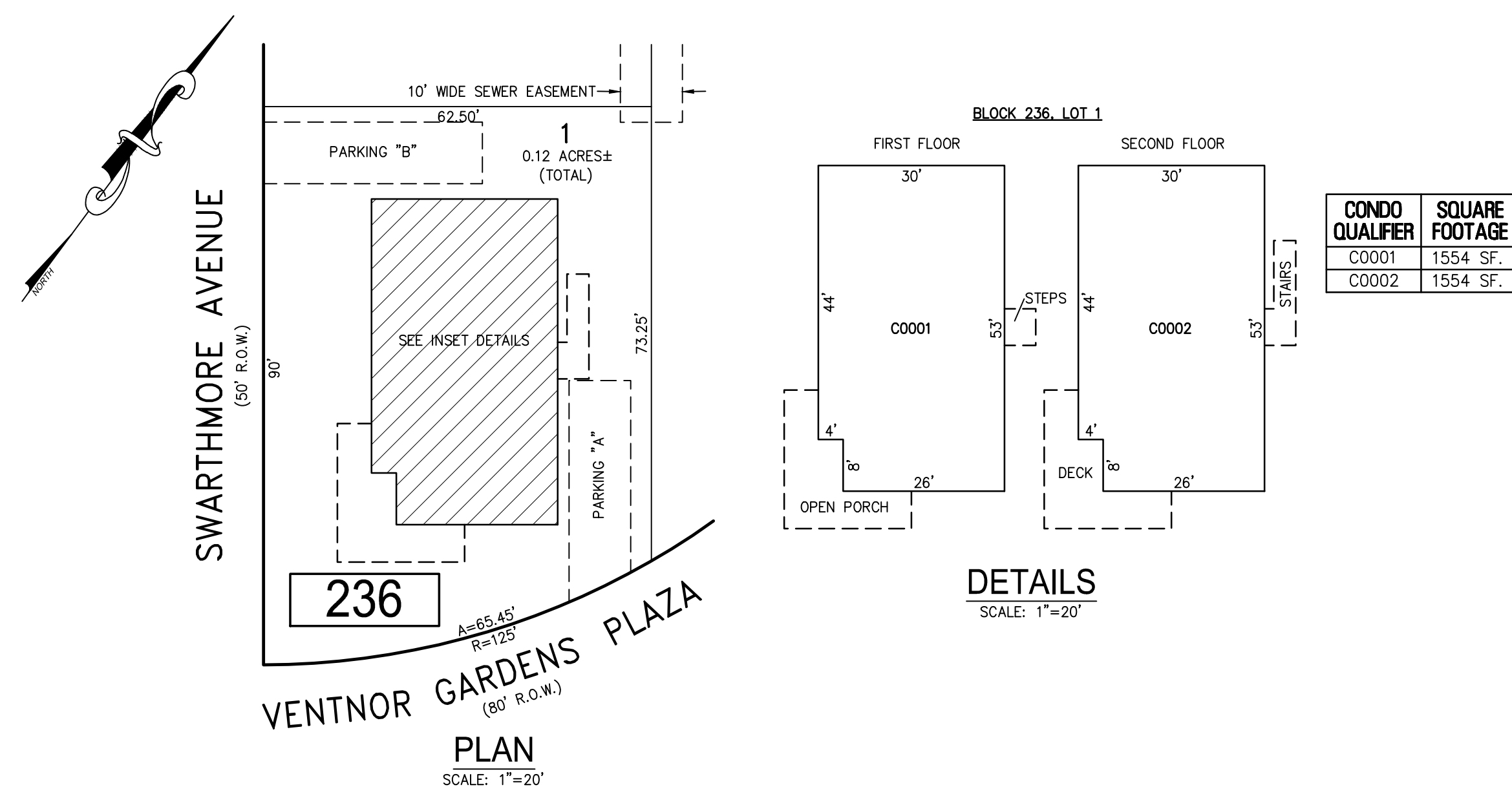
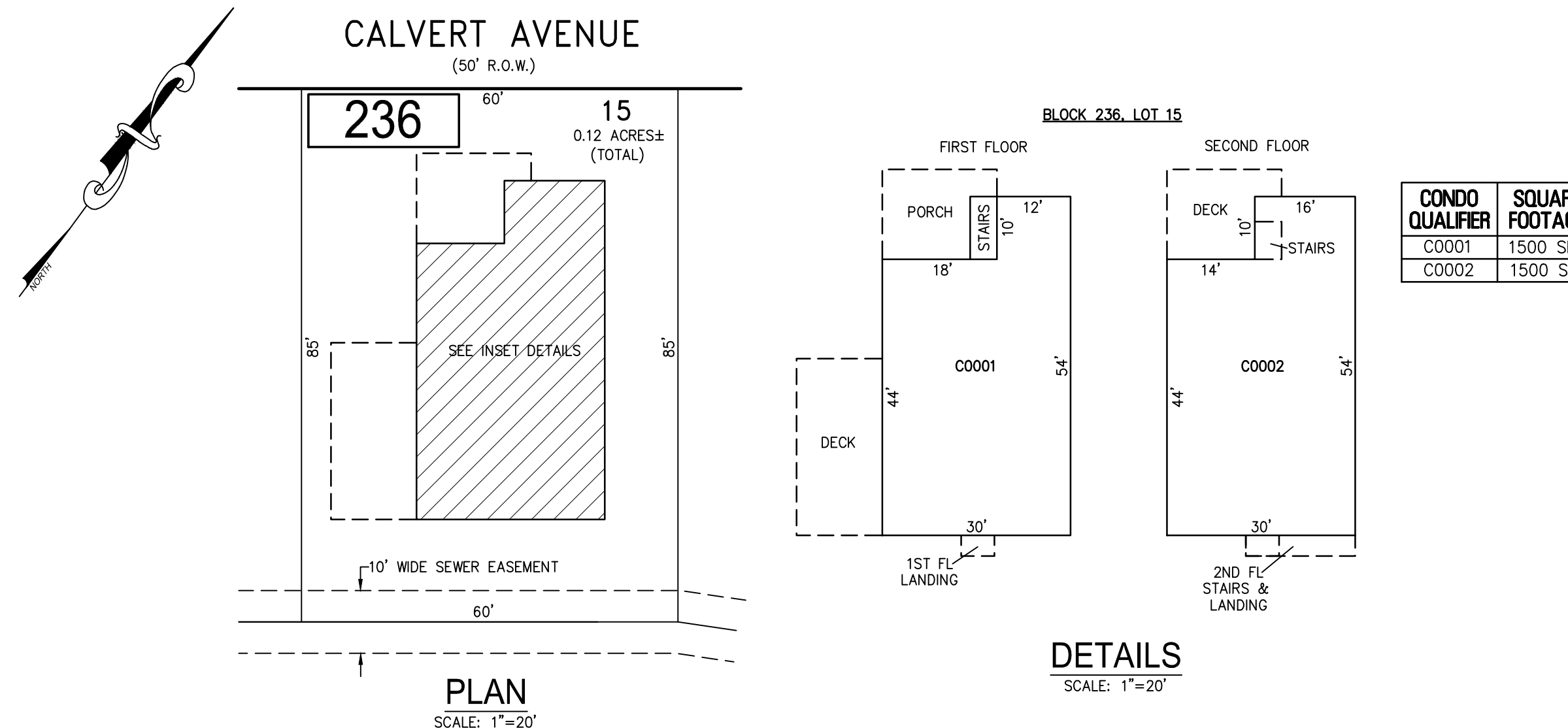


REVISIONS		
DATE	NAME	NO.

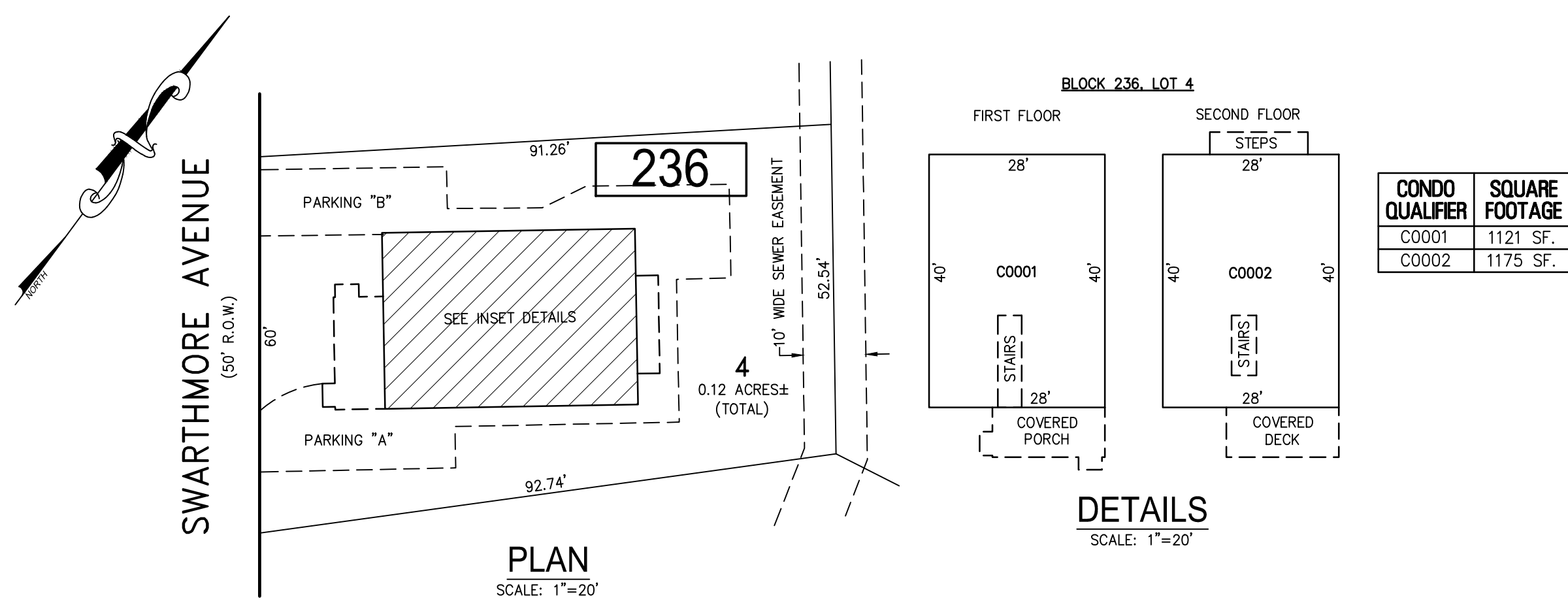
NOTE:
THIS SHEET HAS BEEN DRAWN USING COMPUTER AIDED DRAFTING/DESIGN (CADD) AND COORDINATE GEOMETRY (COGO).



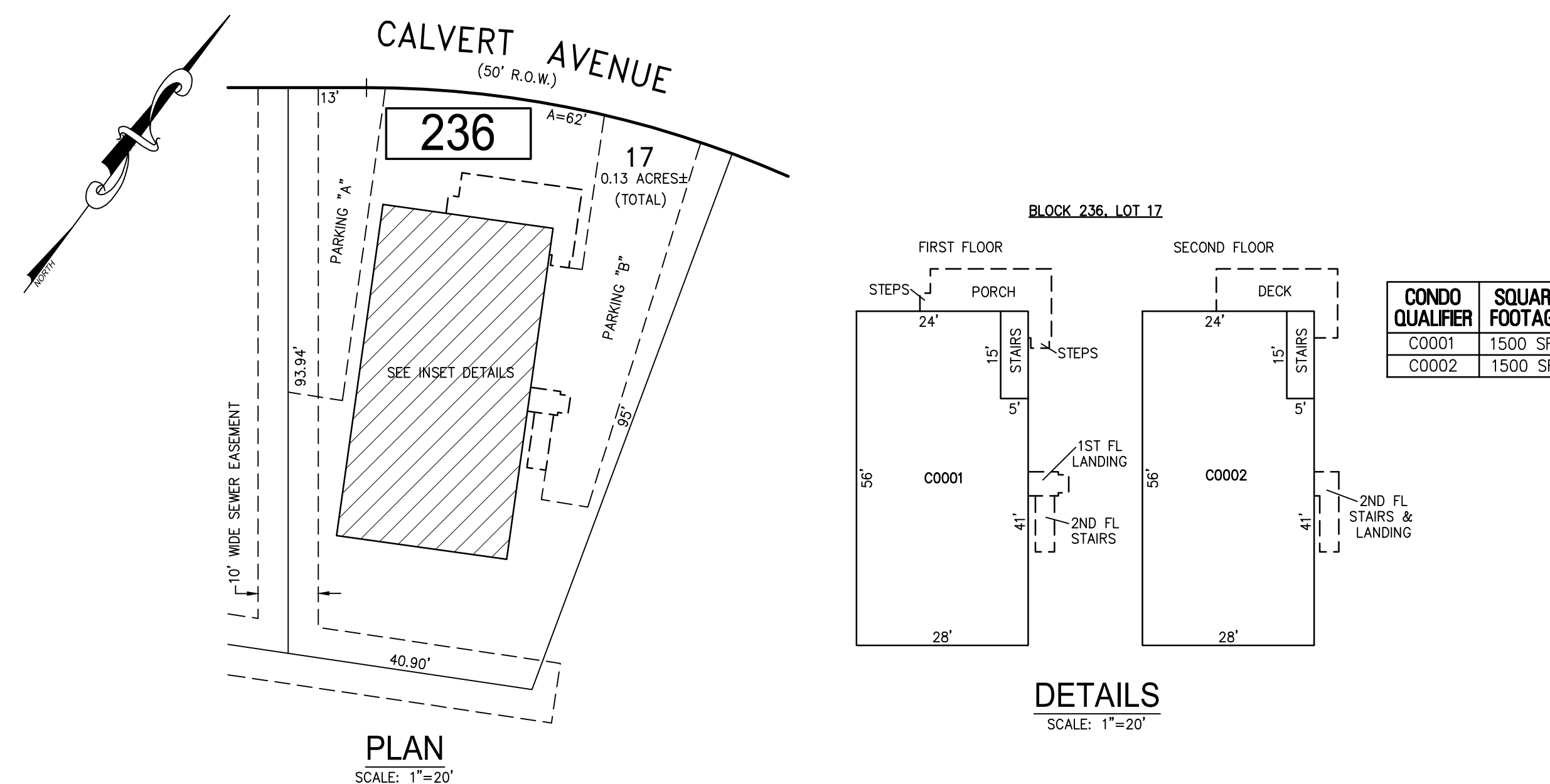
BLOCK 236, LOT 1
201 N. SWARTHMORE AVENUE CONDOMINIUM



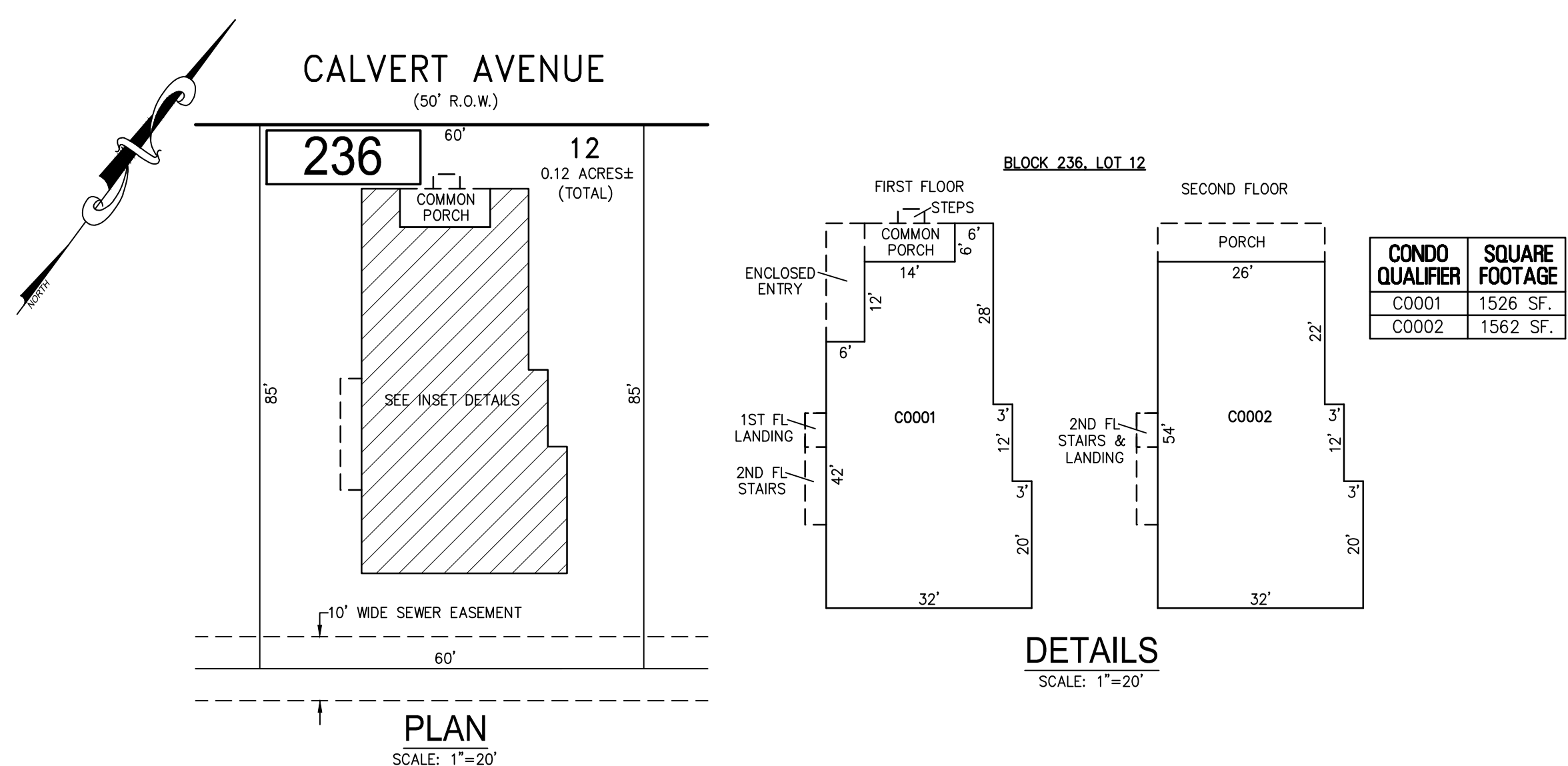
BLOCK 236, LOT 15
7016-18 CALVERT AVENUE CONDOMINIUM



BLOCK 236, LOT 4
211-213 N. SWARTHMORE AVENUE CONDOMINIUM



BLOCK 236, LOT 17
7008-10 CALVERT AVENUE CONDOMINIUM



BLOCK 236, LOT 12
7028-30 CALVERT AVENUE CONDOMINIUM

BLOCK 236, LOT 1
BLOCK 236, LOT 4
BLOCK 236, LOT 12
BLOCK 236, LOT 15
BLOCK 236, LOT 17
SEE SHEET 39

"THIS TAX MAP SHEET HAS BEEN DIGITALLY REVISED USING COMPUTER-AIDED DRAFTING/DESIGN (CADD) & COORDINATE GEOMETRY (COGO). IT IS BASED ON THE ORIGINAL DIGITALLY DRAWN TAX MAP PLATE BEARING THE OFFICIAL NEW JERSEY DIVISION TAXATION APPROVAL STAMP WITH APPROVAL DATE JULY, 20, 2016. SERIAL NUMBER 1070 AND SIGNATURE OF JUDY P. MILLER, CTA, CHIEF PROPERTY ADMINISTRATION AND SHELLY REILLY, CTA, PRINCIPAL FIELD REPRESENTATIVE. THE ORIGINAL DIGITALLY DRAWN TAX MAP PLATE WITH THE OFFICIAL APPROVAL STAMP IS ON FILE WITH REMINGTON & VERNICK ENGINEERS."

TAX MAP
CITY OF VENTNOR
ATLANTIC COUNTY NEW JERSEY
SCALE: NOTED DATE: 2-19-2015

CHARLES E. ADAMSON NJ PROFESSIONAL LAND SURVEYOR LIC. NO. 42627

REMININGTON, VERNICK & WALBERG ENGINEERS
845 N. MAIN STREET, PLEASANTVILLE, N.J. 08232
(609) 645-700, FAX (609) 645-7076
WEB SITE ADDRESS: WWW.RVW.COM
TO SHOW CONDITIONS AS OF 2-03-2023