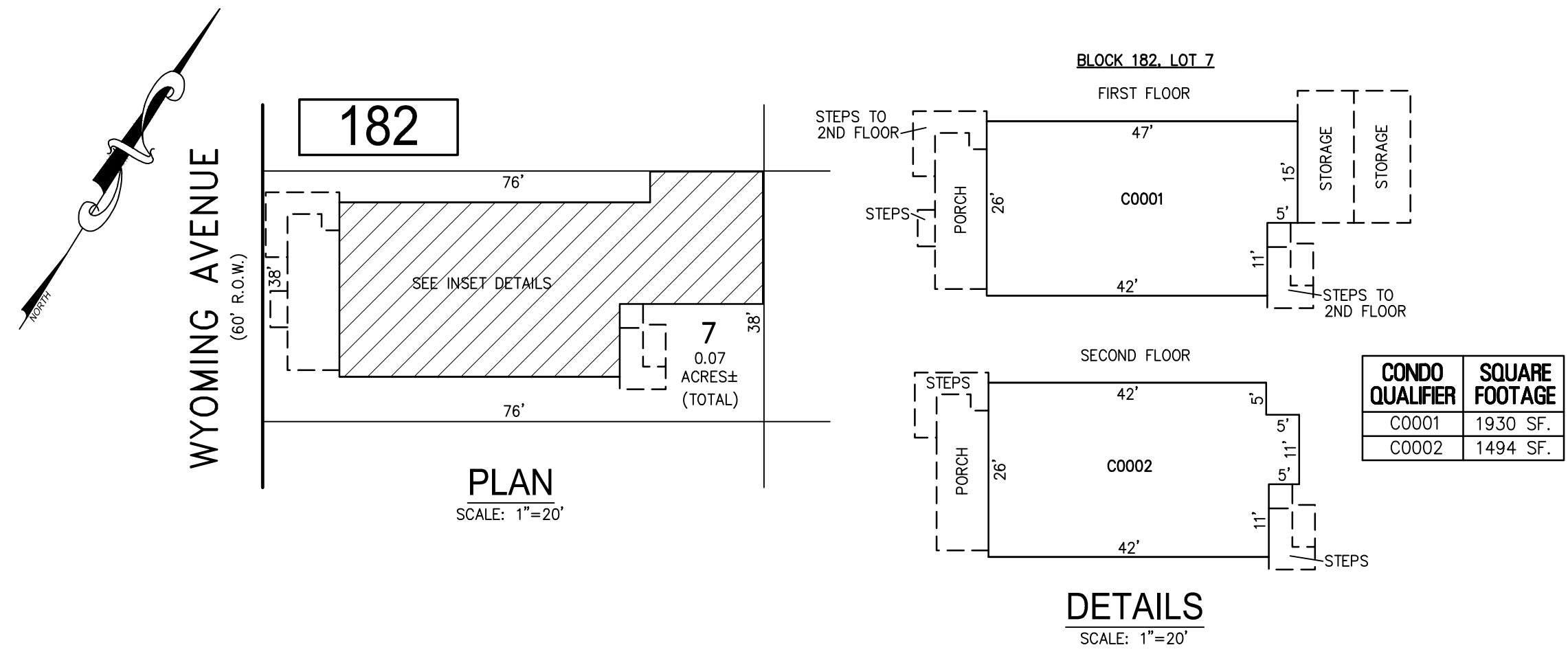
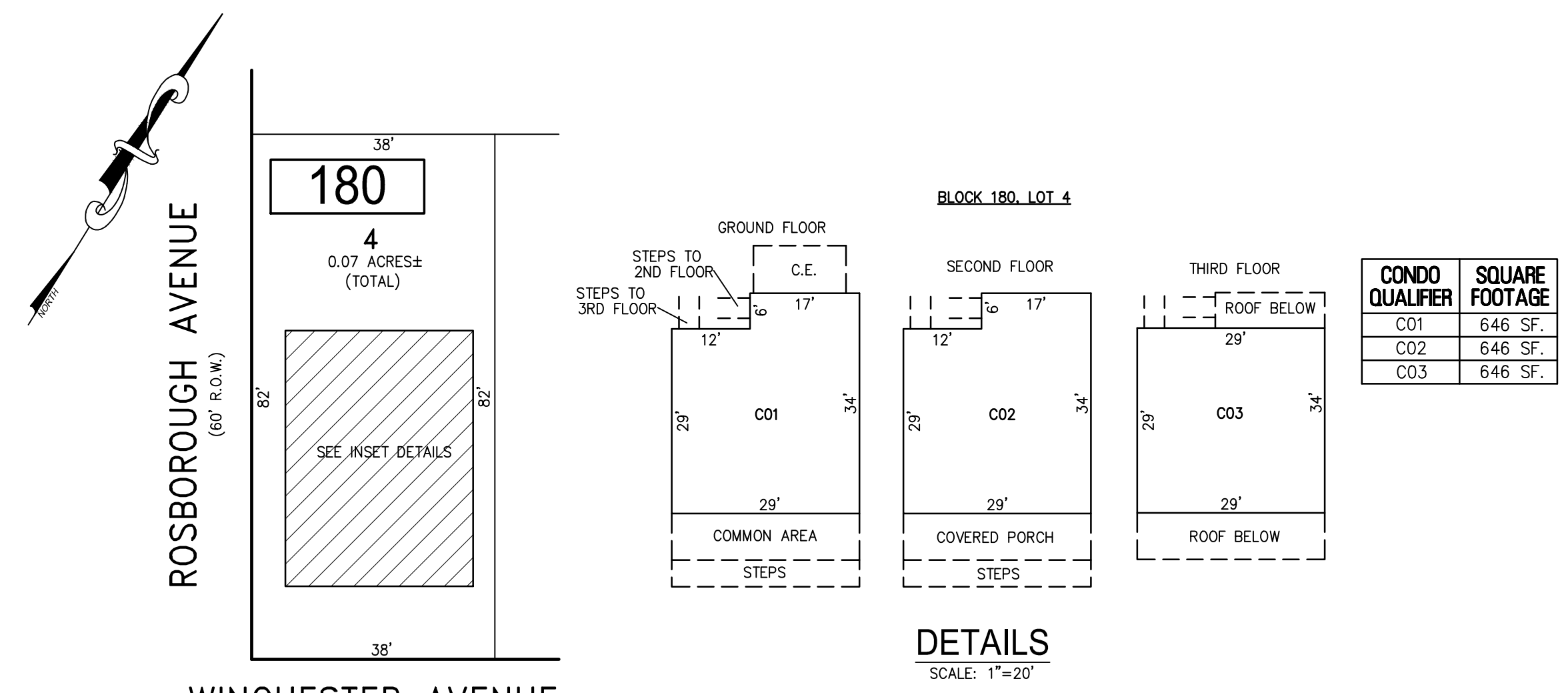


REVISIONS		
DATE	NAME	NO.

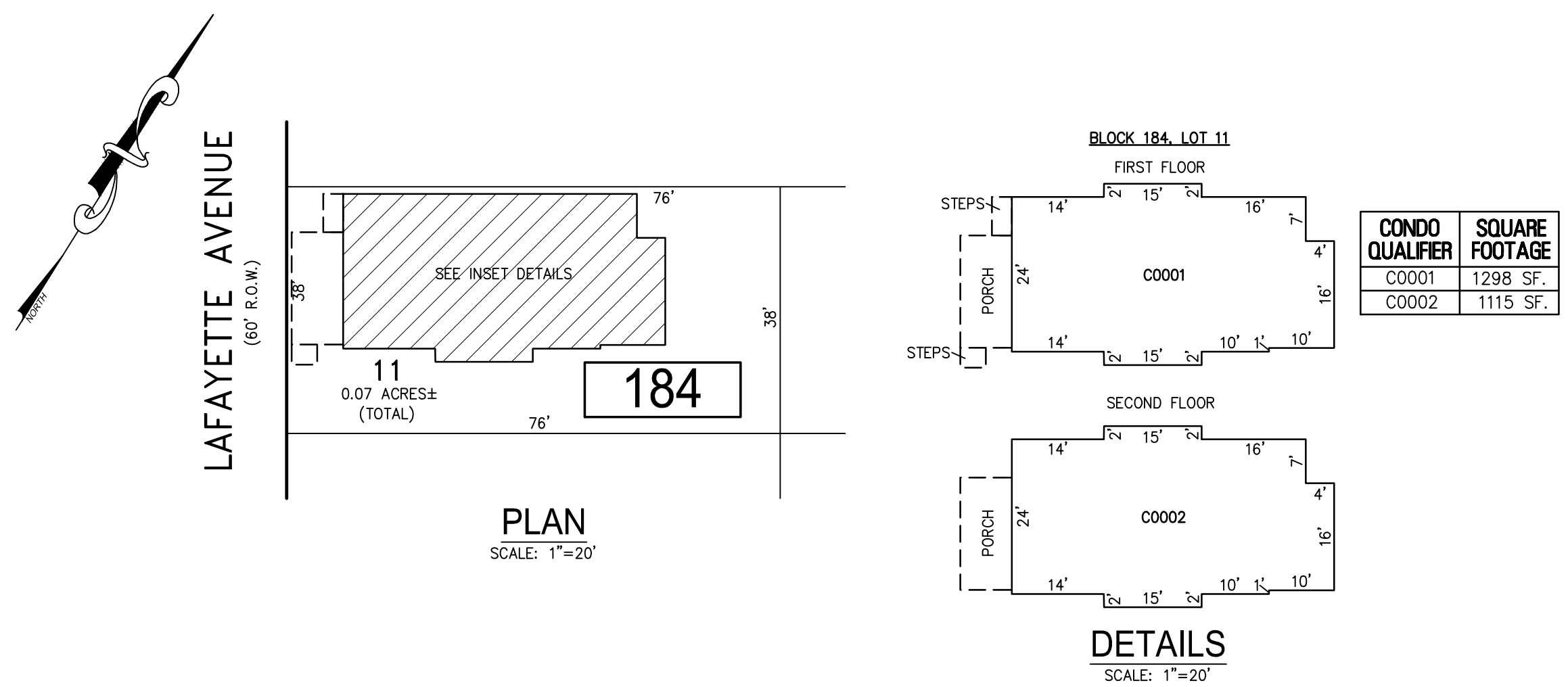
NOTE:
THIS SHEET HAS BEEN DRAWN USING COMPUTER AIDED DRAFTING/DESIGN (CAD/D) AND COORDINATE GEOMETRY (COGO).



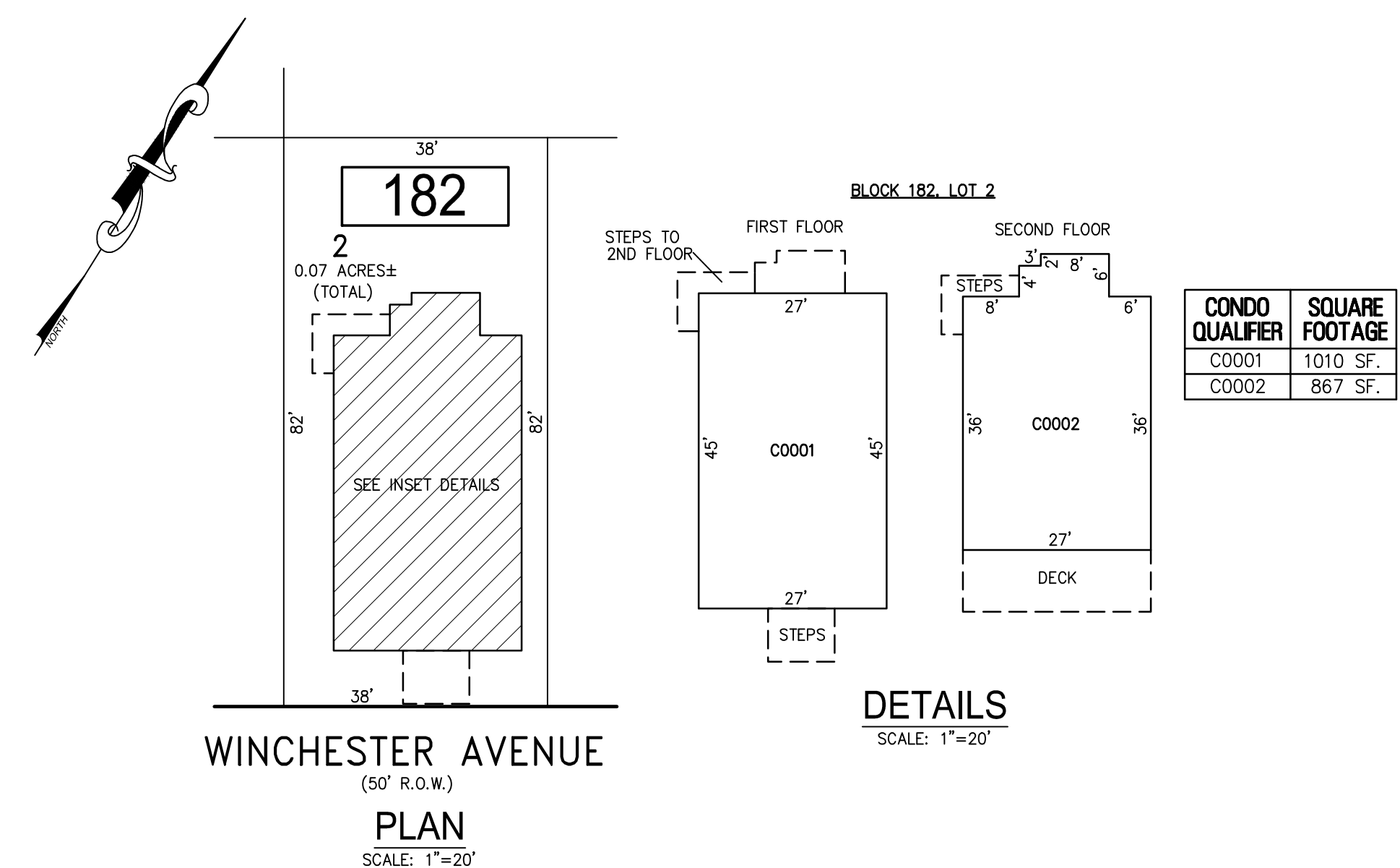
BLOCK 182, LOT 7
105 N. WYOMING AVENUE CONDOMINIUM



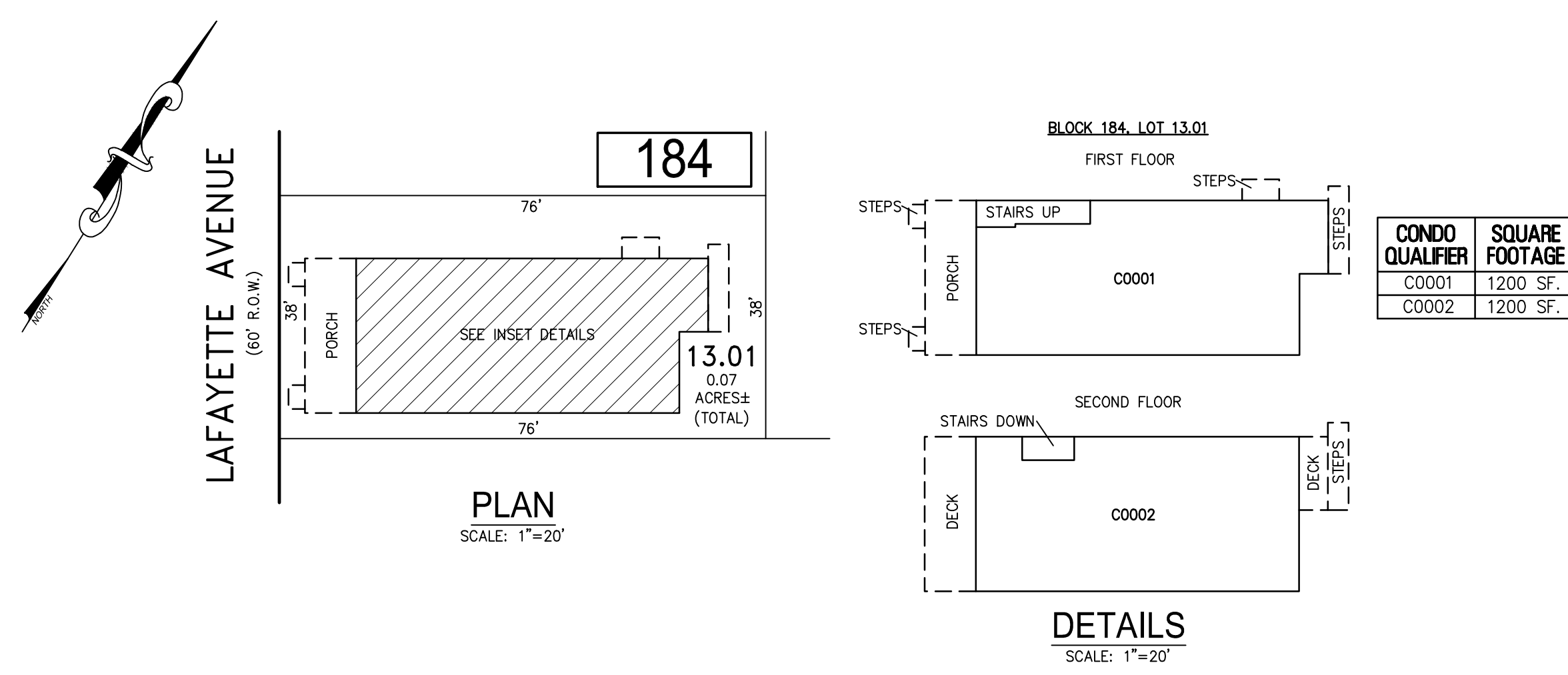
BLOCK 180, LOT 4
6915 WINCHESTER AVENUE CONDOMINIUM



BLOCK 184, LOT 11
121 N. LAFAYETTE AVENUE CONDOMINIUM



BLOCK 182, LOT 2
6925 WINCHESTER AVENUE CONDOMINIUM



BLOCK 184, LOT 13.01
127 N. LAFAYETTE AVENUE CONDOMINIUM

BLOCK 180, LOT 4
BLOCK 182, LOT 2
BLOCK 182, LOT 7
BLOCK 184, LOT 11
BLOCK 184, LOT 13.01
SEE SHEET 30

"THIS TAX MAP SHEET HAS BEEN DIGITALLY REVISED USING COMPUTER-AIDED DRAFTING/DESIGN (CADD) & COORDINATE GEOMETRY (COGO). IT IS BASED ON THE ORIGINAL DIGITALLY DRAWN TAX MAP PLATE BEARING THE OFFICIAL NEW JERSEY DIVISION TAXATION APPROVAL STAMP WITH APPROVAL DATE JULY, 20, 2016. SERIAL NUMBER 1070 AND SIGNATURE OF JUDY P. MILLER, CTA, CHIEF PROPERTY ADMINISTRATION AND SHELLY REILLY, CTA, PRINCIPAL FIELD REPRESENTATIVE. THE ORIGINAL DIGITALLY DRAWN TAX MAP PLATE WITH THE OFFICIAL APPROVAL STAMP IS ON FILE WITH REMINGTON & VERNICK ENGINEERS."

TAX MAP
CITY OF VENTNOR
ATLANTIC COUNTY NEW JERSEY
SCALE: NOTED DATE: 2-19-2015

CHARLES E. ADAMSON NJ PROFESSIONAL LAND SURVEYOR LIC. NO. 42627
24 GA 28048700

RV & W REMINGTON, VERNICK & WALBERG ENGINEERS
845 N. MAIN STREET, PLEASANTVILLE, NJ 08232
(609) 645-710, FAX (609) 645-7076
WEB SITE ADDRESS: WWW.RVW.COM
TO SHOW CONDITIONS AS OF 2-03-2023