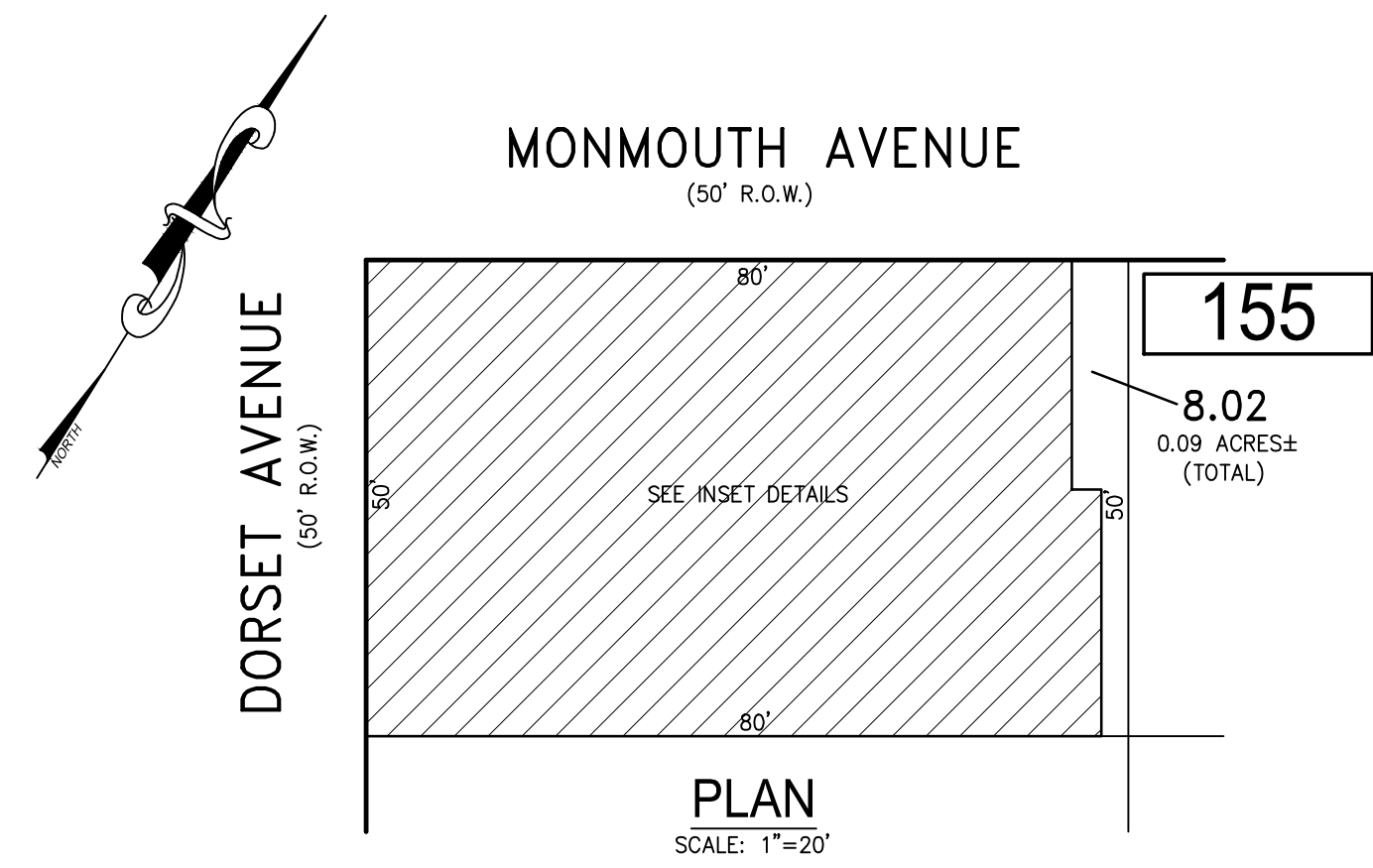


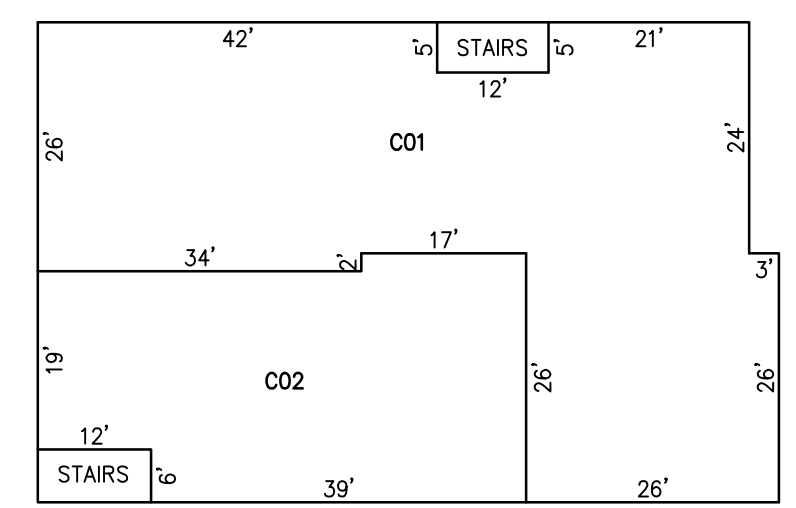
REVISIONS		
DATE	NAME	NO.

NOTE:
THIS SHEET HAS BEEN DRAWN USING COMPUTER AIDED DRAFTING/DESIGN (CADD) AND COORDINATE GEOMETRY (COGO).

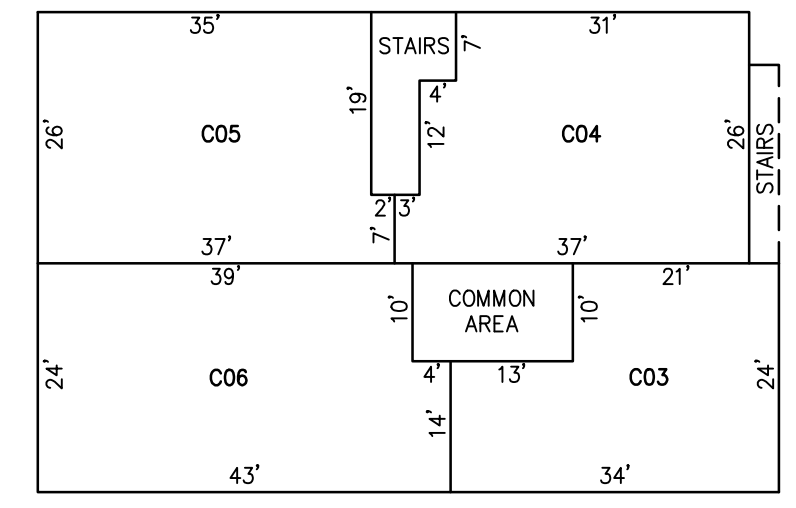


PLAN
SCALE: 1"=20'

BLOCK 155, LOT 8.02



FIRST FLOOR

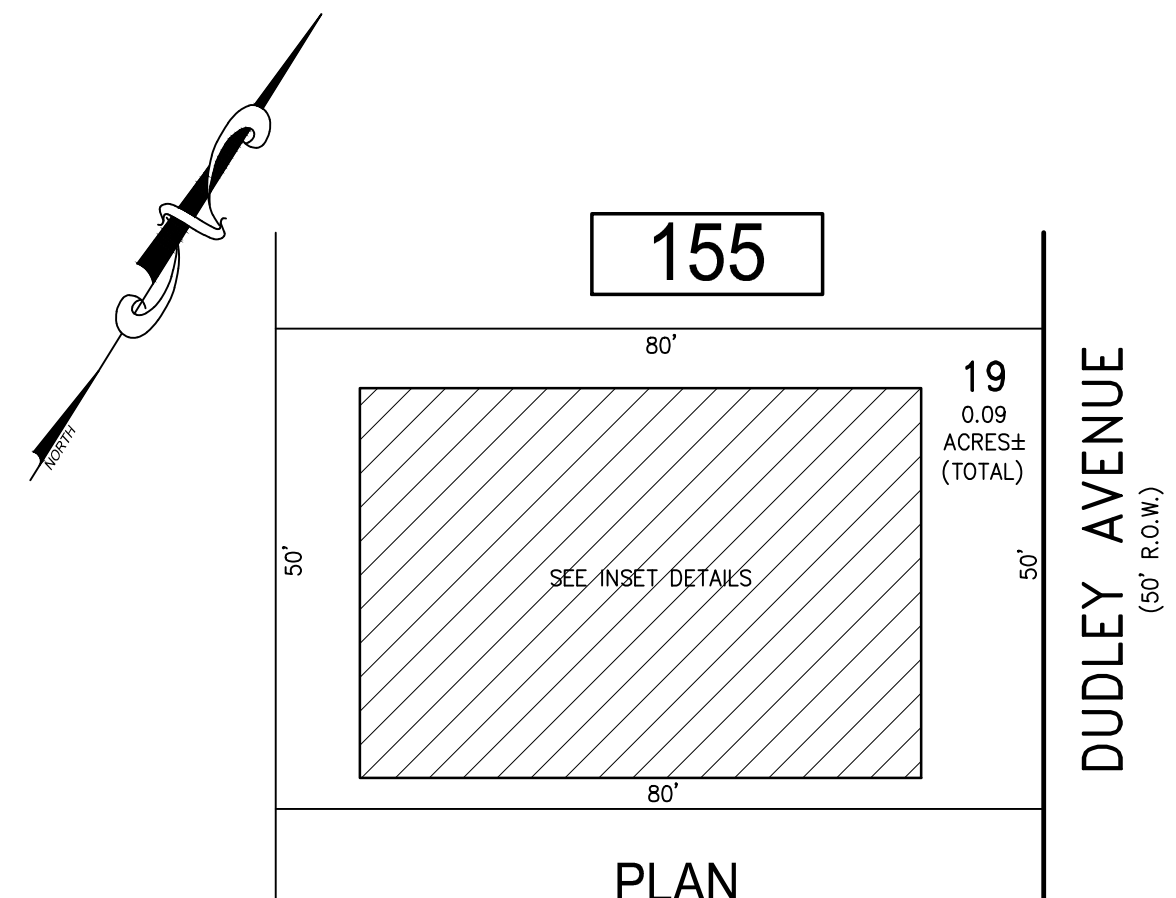


SECOND FLOOR

DETAILS
SCALE: 1"=20'

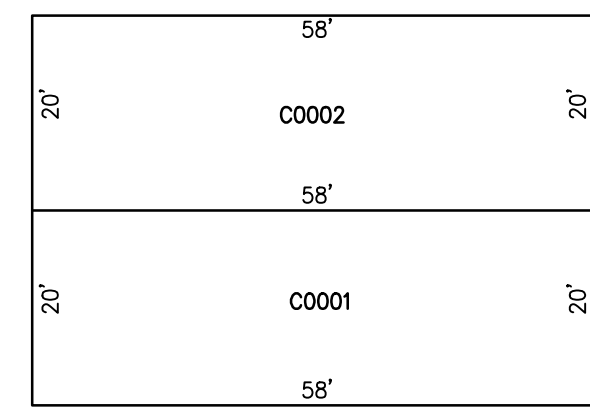
BLOCK 155, LOT 8.02
139-141 NORTH DORSET CONDOMINIUM

CONDO QUALIFIER	SQUARE FOOTAGE
C01	1950 SF.
C02	1272 SF.
C03	706 SF.
C04	1044 SF.
C05	980 SF.
C06	941 SF.

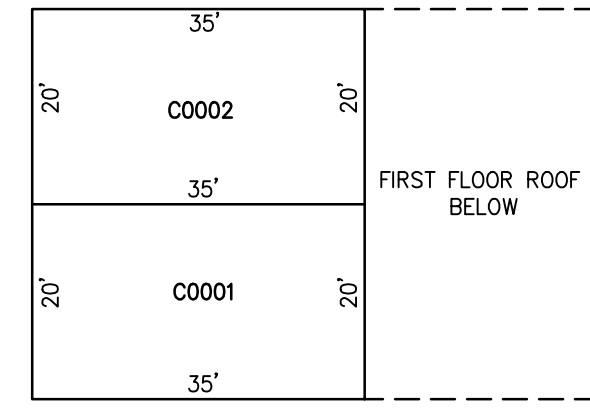


PLAN
SCALE: 1"=20'

BLOCK 155, LOT 19



FIRST FLOOR

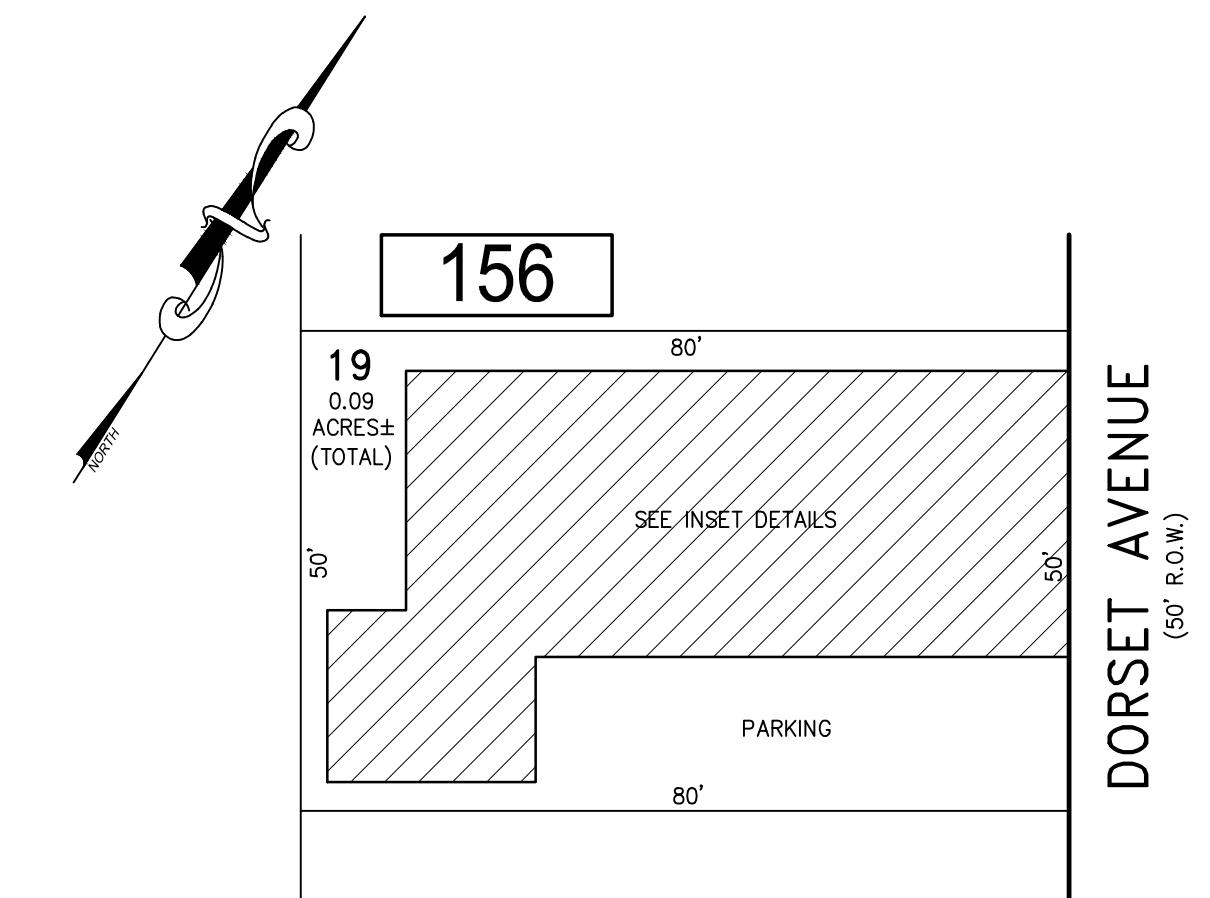


SECOND FLOOR

DETAILS
SCALE: 1"=20'

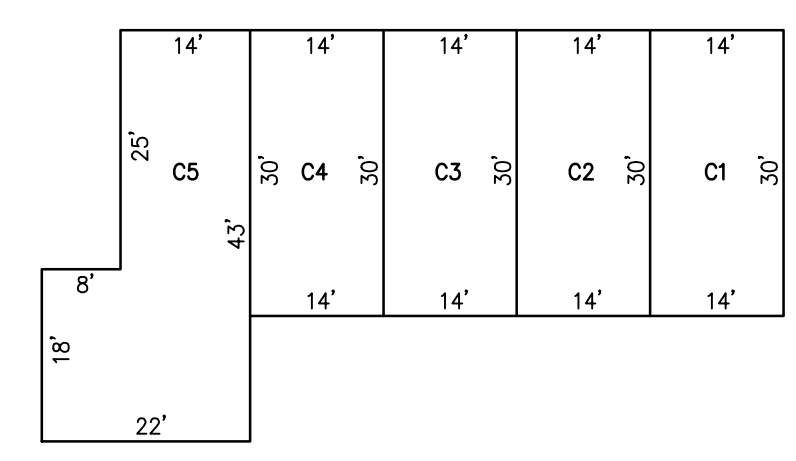
BLOCK 155, LOT 19
110-112 NORTH DUDLEY AVENUE CONDOMINIUM

CONDO QUALIFIER	SQUARE FOOTAGE
C0001	1425 SF.
C0002	1368 SF.



PLAN
SCALE: 1"=20'

BLOCK 156, LOT 19



DETAILS
SCALE: 1"=20'

BLOCK 156, LOT 19
BLUE WATER CONDOMINIUM
104 NORTH DORSET AVENUE

CONDO QUALIFIER	SQUARE FOOTAGE
C1	465 SF.
C2	434 SF.
C3	390 SF.
C4	390 SF.
C5	746 SF.

BLOCK 155, LOT 8.02
BLOCK 155, LOT 19
BLOCK 156, LOT 19
SEE SHEET 26

"THIS TAX MAP SHEET HAS BEEN DIGITALLY REVISED USING COMPUTER-AIDED DRAFTING/DESIGN (CADD) & COORDINATE GEOMETRY (COGO). IT IS BASED ON THE ORIGINAL DIGITALLY DRAWN TAX MAP PLATE BEARING THE OFFICIAL NEW JERSEY DIVISION TAXATION APPROVAL STAMP WITH APPROVAL DATE JULY, 20, 2016. SERIAL NUMBER 1070 AND SIGNATURE OF JUDY P. MILLER, CTA, CHIEF PROPERTY ADMINISTRATION AND SHELLY REILLY, CTA, PRINCIPAL FIELD REPRESENTATIVE. THE ORIGINAL DIGITALLY DRAWN TAX MAP PLATE WITH THE OFFICIAL APPROVAL STAMP IS ON FILE WITH REMINGTON & VERNICK ENGINEERS."

TAX MAP
CITY OF VENTNOR
ATLANTIC COUNTY NEW JERSEY
SCALE: NOTED DATE: 2-19-2015

CHARLES E. ADAMSON NJ PROFESSIONAL LAND SURVEYOR LIC. NO. 42627
24 GA 28048700

RV & W **REMINGTON, VERNICK & WALBERG ENGINEERS**
845 N. MAIN STREET, PLEASANTVILLE, NJ 08232
(609) 645-7100, FAX (609) 645-7076
WEB SITE ADDRESS: WWW.RVE.COM
TO SHOW CONDITIONS AS OF 2-10-2021