

REVISIONS		
DATE	NAME	NO.
3-1-2017	CHARLES E. ADAMSON	42627
3-1-2022	CHARLES E. ADAMSON	42627
2-3-2023	CHARLES E. ADAMSON	42627

NOTE:
 THIS SHEET HAS BEEN DRAWN USING COMPUTER AIDED DRAFTING/DESIGN (CADD) AND COORDINATE GEOMETRY (COGO).

SHEET 34

SHEET 33

SHEET 27

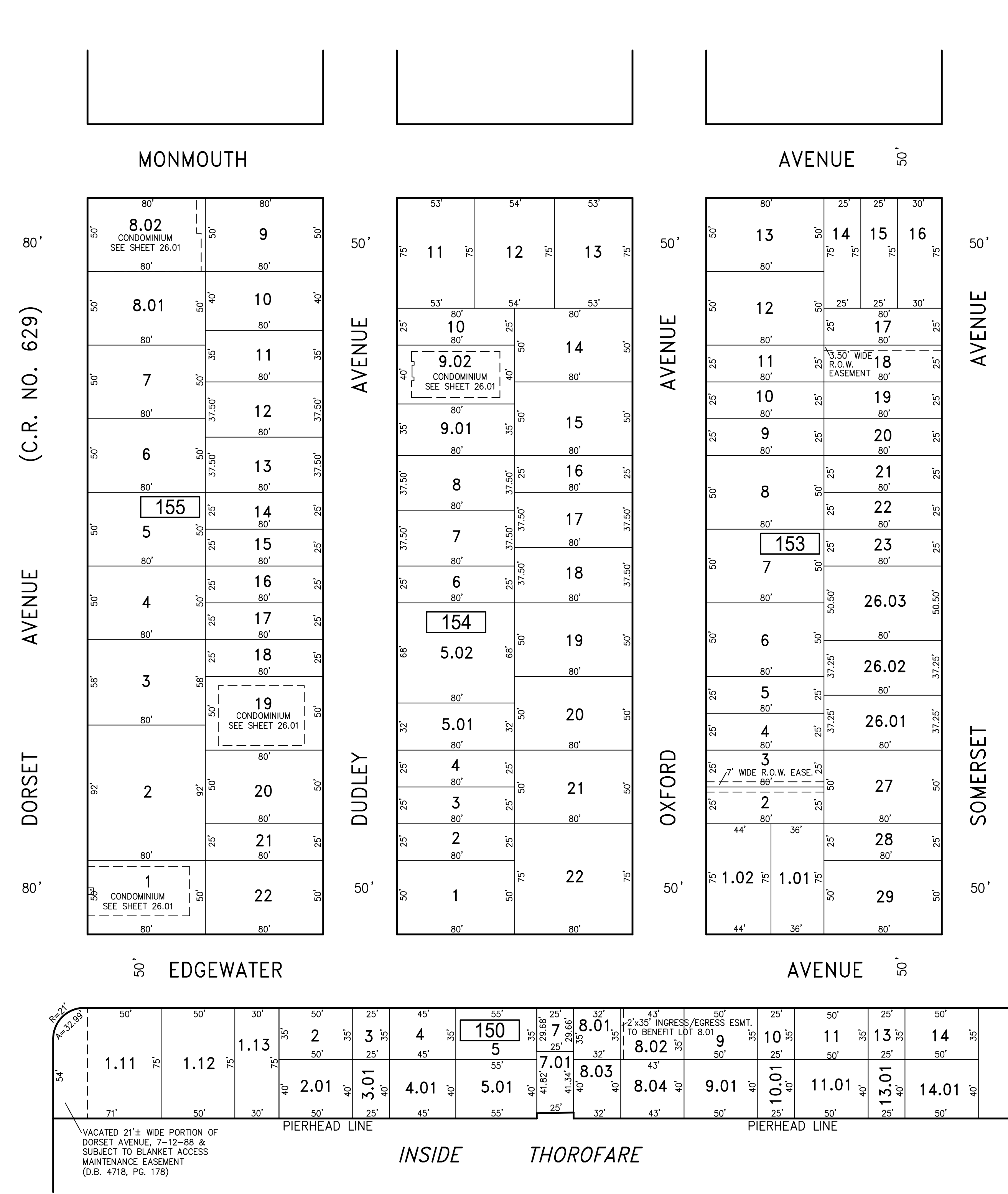
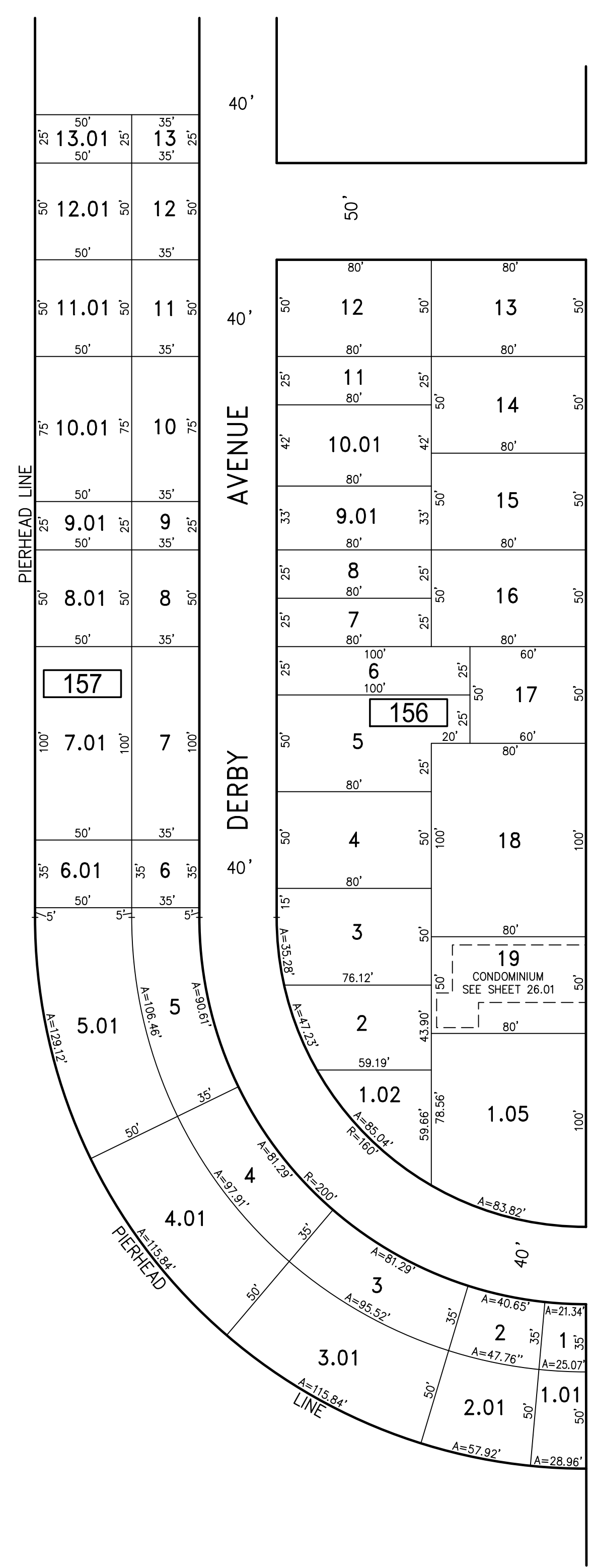
SHEET 25

SHEET 20

SHEET 19

INSIDE THOROFARE

INSIDE THOROFARE



VACATED 21'± WIDE PORTION OF DORSET AVENUE, 7-12-89 & SUBJECT TO BLANKET ACCESS MAINTENANCE EASEMENT (D.B. 4718, PG. 178)

"THIS TAX MAP SHEET HAS BEEN DIGITALLY REVISED USING COMPUTER-AIDED DRAFTING/DESIGN (CADD) & COORDINATE GEOMETRY (COGO). IT IS BASED ON THE ORIGINAL DIGITALLY DRAWN TAX MAP PLATE BEARING THE OFFICIAL NEW JERSEY DIVISION TAXATION APPROVAL STAMP WITH APPROVAL DATE JULY, 20, 2016, SERIAL NUMBER 1070 AND SIGNATURE OF JUDY P. MILLER, CTA, CHIEF PROPERTY ADMINISTRATION AND SHELLY REILLY, CTA, PRINCIPAL FIELD REPRESENTATIVE. THE ORIGINAL DIGITALLY DRAWN TAX MAP PLATE WITH THE OFFICIAL APPROVAL STAMP IS ON FILE WITH REMINGTON & VERNICK ENGINEERS."

TAX MAP
CITY OF VENTNOR
 ATLANTIC COUNTY NEW JERSEY
 SCALE: 1" = 50' DATE: 2-19-2015

CHARLES E. ADAMSON NJ PROFESSIONAL LAND SURVEYOR LIC. NO. 42627

RV & W REMINGTON, VERNICK & WALBERG ENGINEERS
 845 N. MAIN STREET, PLEASANTVILLE, NJ 08232
 (609) 645-7700, FAX (609) 645-7076
 WEB SITE ADDRESS: WWW.RVW.COM
 TO SHOW CONDITIONS AS OF 2-03-2023