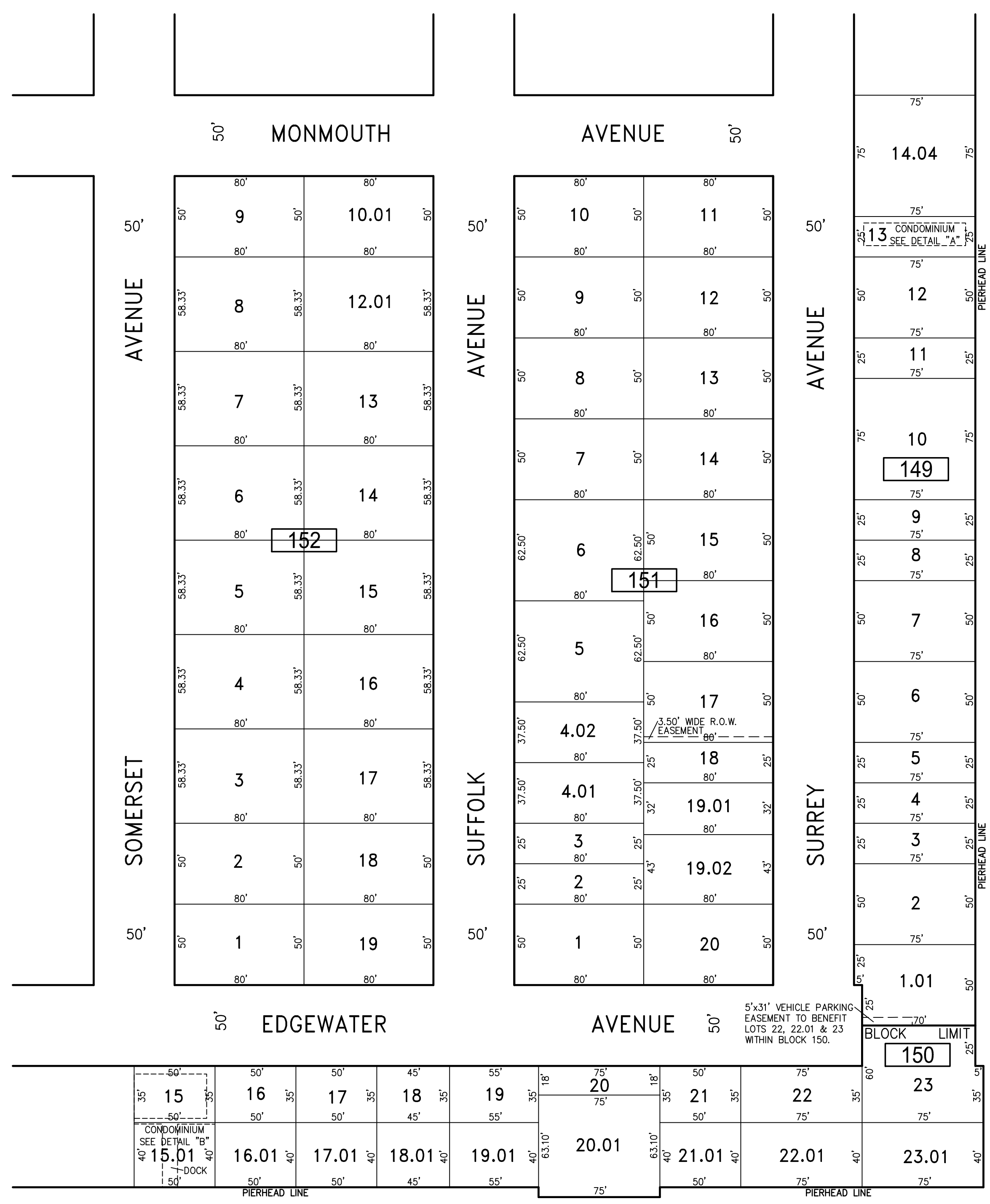


| REVISIONS |      |     |
|-----------|------|-----|
| DATE      | NAME | NO. |
|           |      |     |
|           |      |     |
|           |      |     |
|           |      |     |
|           |      |     |
|           |      |     |
|           |      |     |
|           |      |     |
|           |      |     |
|           |      |     |

**NOTE:**  
THIS SHEET HAS BEEN DRAWN USING COMPUTER AIDED DRAFTING/DESIGN (CADD) AND COORDINATE GEOMETRY (COGO).

SHEET 32

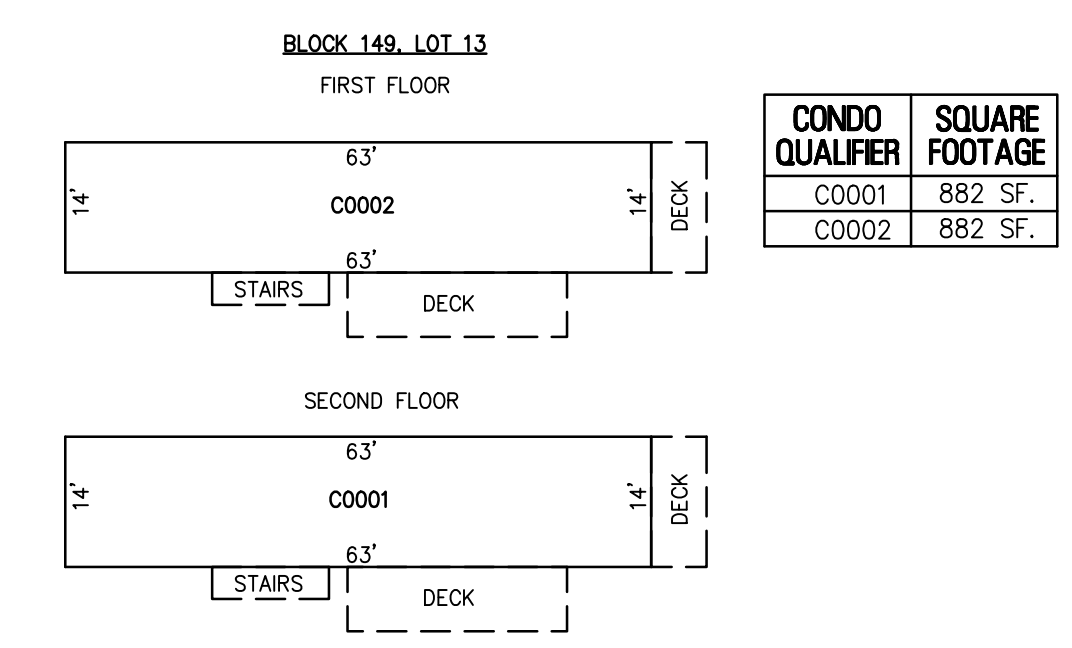


SHEET 26

SHEET 40

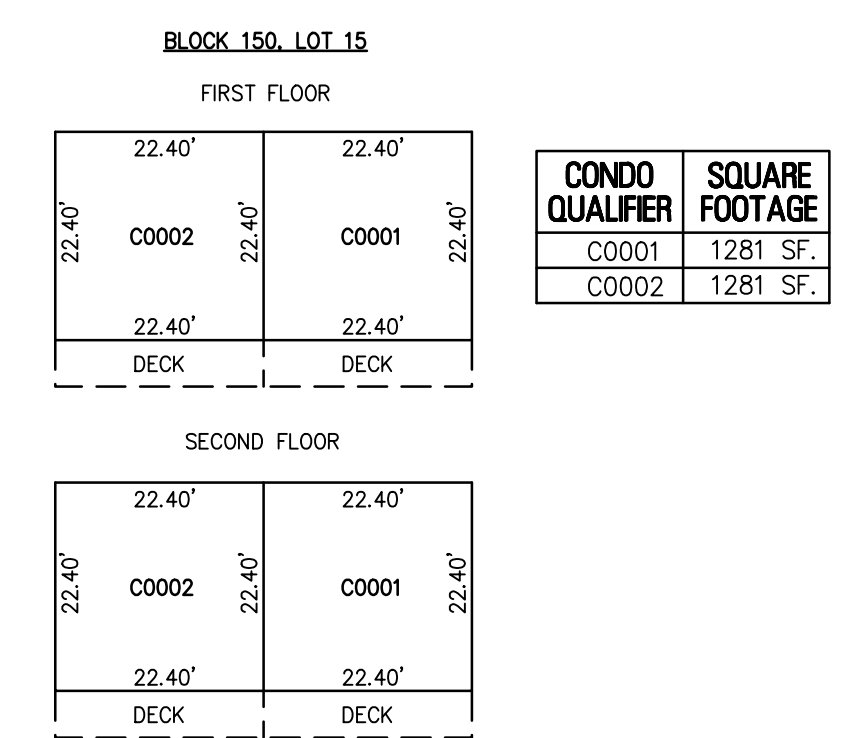
INSIDE THOROFARE

SHEET 19



| CONDO QUALIFIER | SQUARE FOOTAGE |
|-----------------|----------------|
| C0001           | 882 SF.        |
| C0002           | 882 SF.        |

**BAY ACRES CONDOMINIUM**  
139 NORTH SURREY AVENUE  
DETAIL "A"  
SCALE: 1"=20'



| CONDO QUALIFIER | SQUARE FOOTAGE |
|-----------------|----------------|
| C0001           | 1281 SF.       |
| C0002           | 1281 SF.       |

**CACTUS FLATES CONDOMINIUM**  
5510 EDGEWATER AVENUE  
DETAIL "B"  
SCALE: 1"=20'

"THIS TAX MAP SHEET HAS BEEN DIGITALLY REVISED USING COMPUTER-AIDED DRAFTING/DESIGN (CADD) & COORDINATE GEOMETRY (COGO). IT IS BASED ON THE ORIGINAL DIGITALLY DRAWN TAX MAP PLATE BEARING THE OFFICIAL NEW JERSEY DIVISION TAXATION APPROVAL STAMP WITH APPROVAL DATE JULY, 20, 2016. SERIAL NUMBER 1070 AND SIGNATURE OF JUDY P. MILLER, CTA, CHIEF PROPERTY ADMINISTRATION AND SHELLY REILLY, CTA, PRINCIPAL FIELD REPRESENTATIVE. THE ORIGINAL DIGITALLY DRAWN TAX MAP PLATE WITH THE OFFICIAL APPROVAL STAMP IS ON FILE WITH REMINGTON & VERNICK ENGINEERS."

**TAX MAP**  
**CITY OF VENTNOR**  
ATLANTIC COUNTY NEW JERSEY  
SCALE: 1" = 50' DATE: 2-19-2015

**CHARLES E. ADAMSON** NJ PROFESSIONAL LAND SURVEYOR LIC. NO. 42627

**RV & W** **REMINGTON, VERNICK & WALBERG ENGINEERS**  
845 N. MAIN STREET, PLEASANTVILLE, NJ 08232  
(609) 645-700, FAX (609) 645-7076  
WEB SITE ADDRESS: WWW.RVW.COM  
TO SHOW CONDITIONS AS OF 2-03-2023