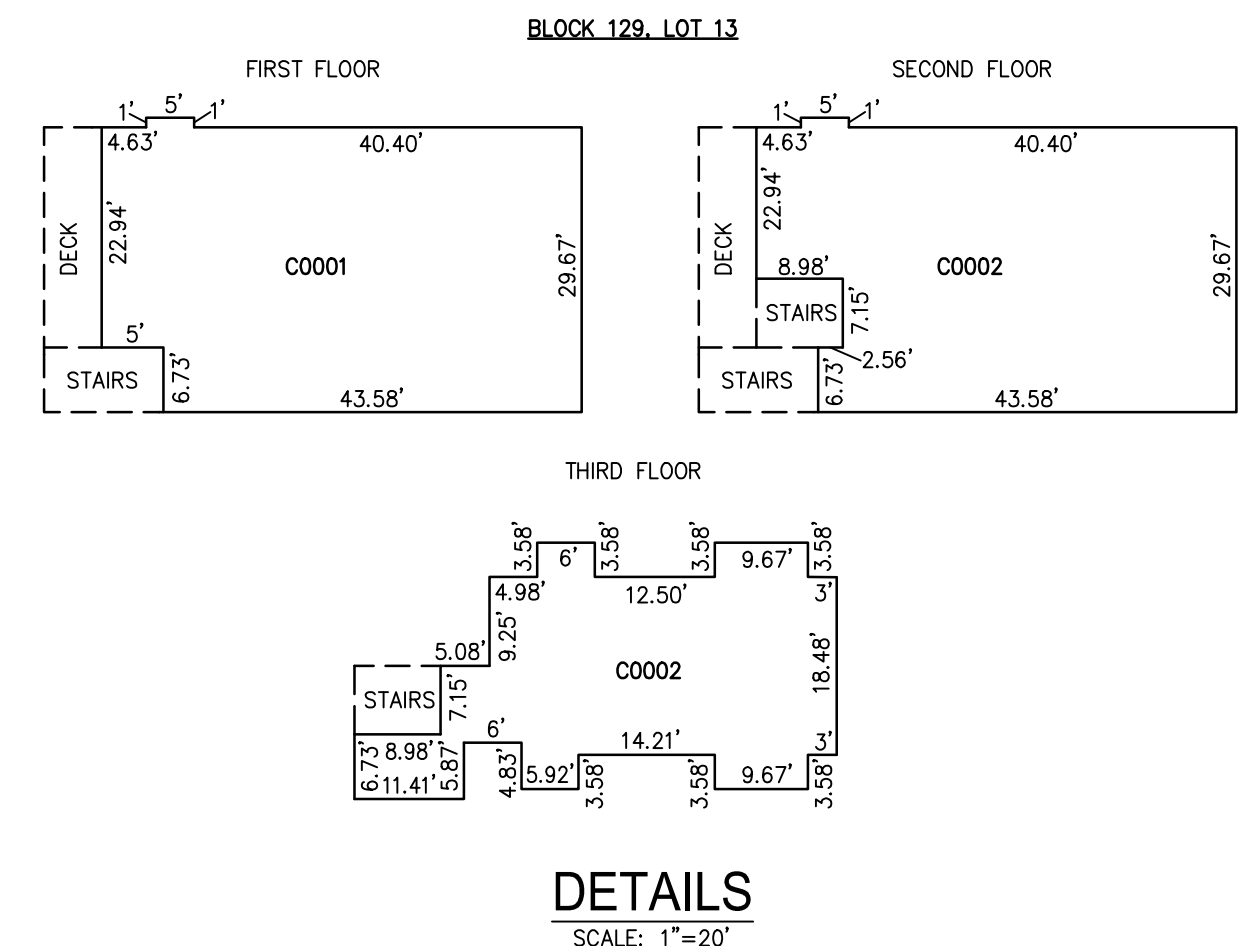
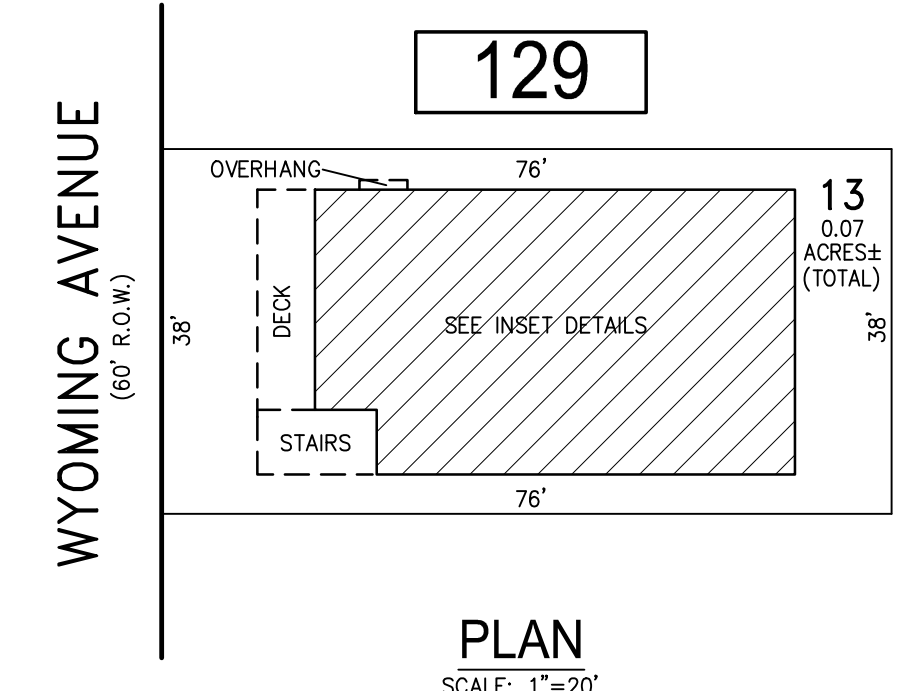
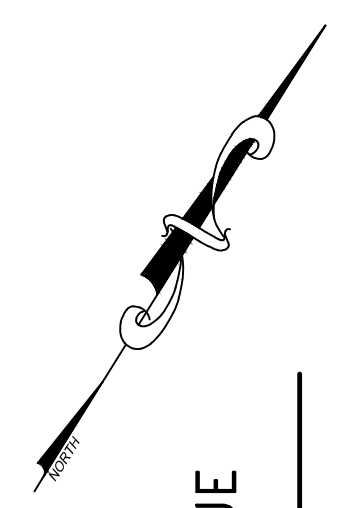
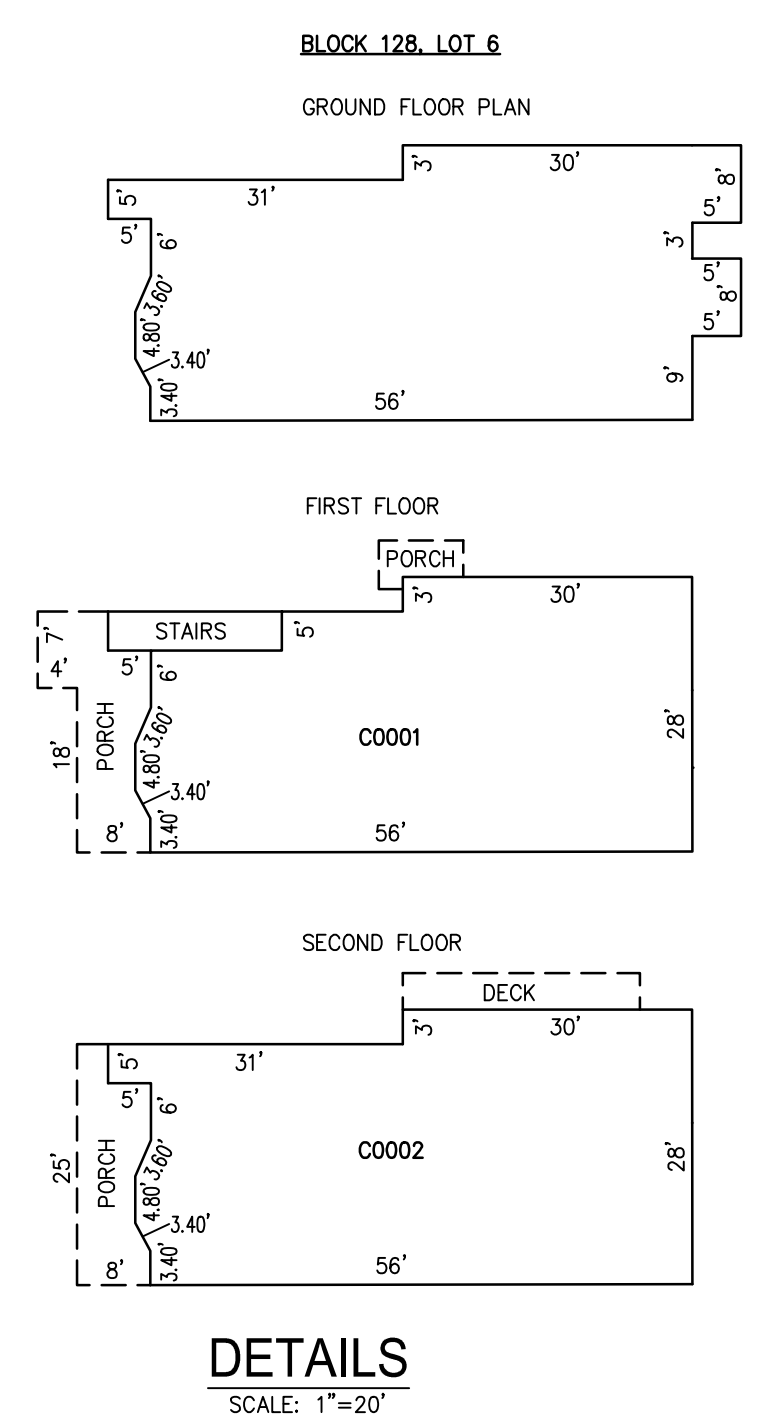
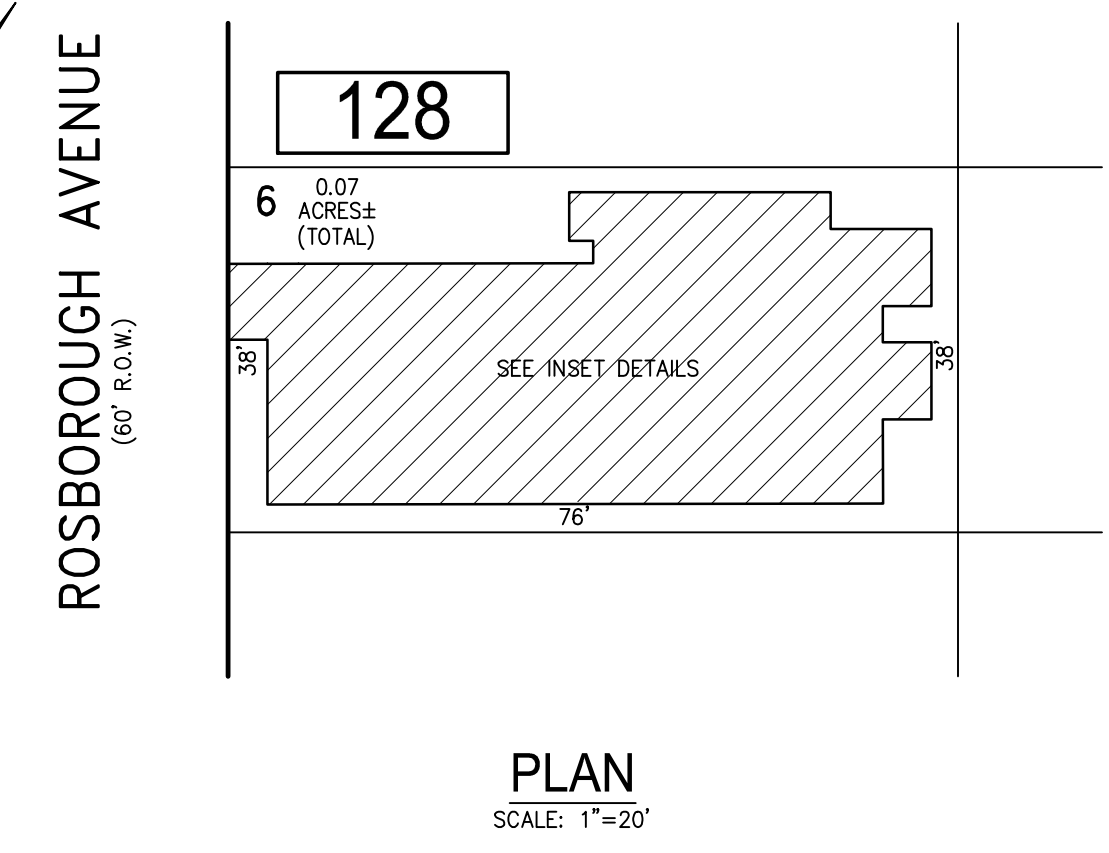
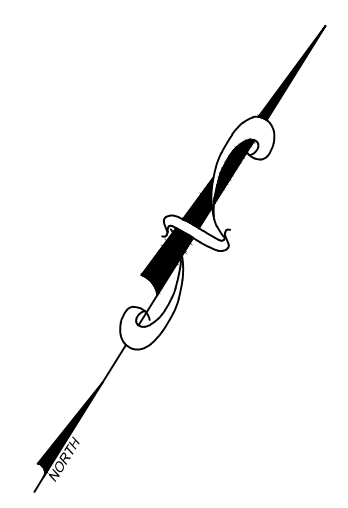


REVISIONS		
DATE	NAME	NO.
2-03-2023	CHARLES E. ADAMSON	42627

**NOTE:**  
THIS SHEET HAS BEEN DRAWN USING COMPUTER AIDED DRAFTING/DESIGN (CAD/D) AND COORDINATE GEOMETRY (COGO).

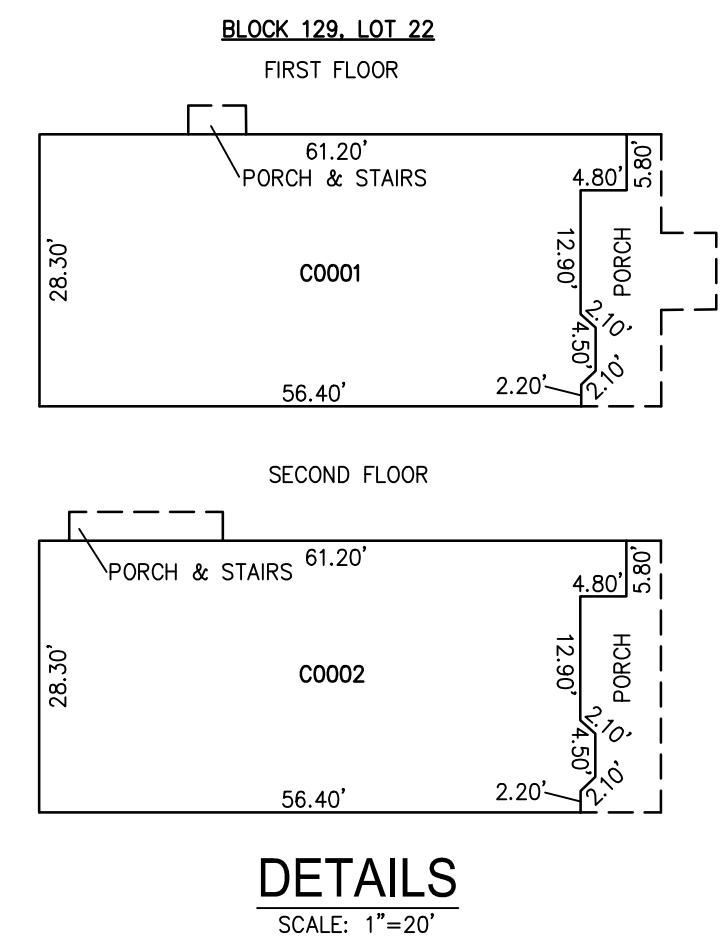
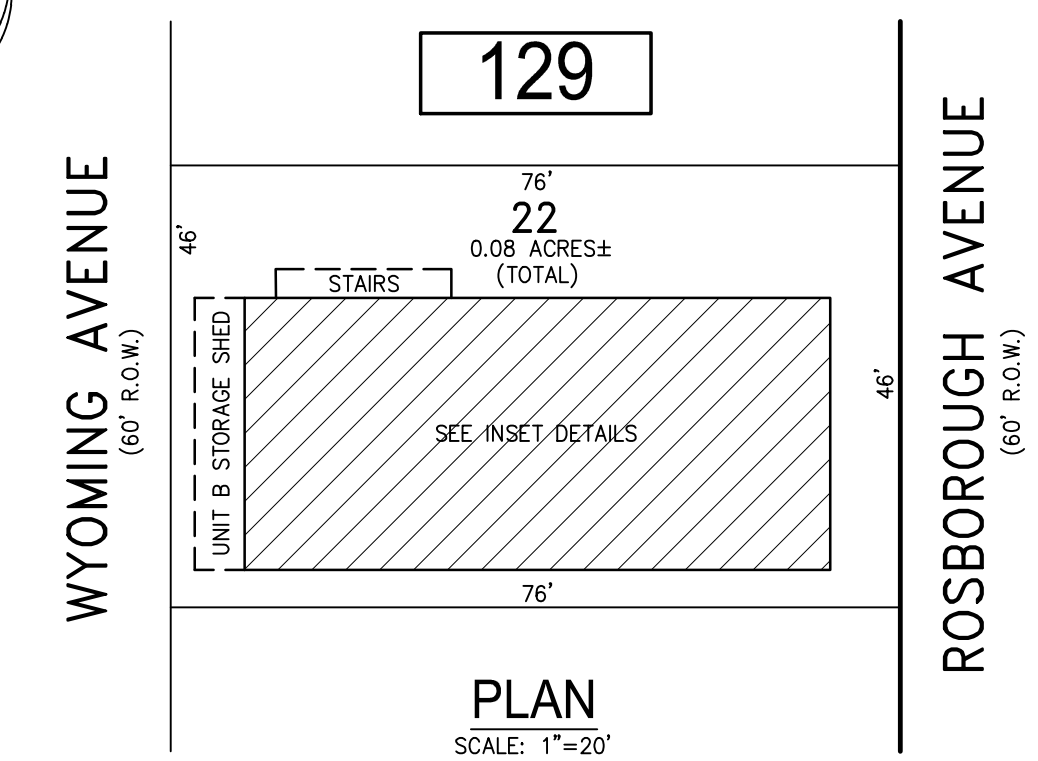
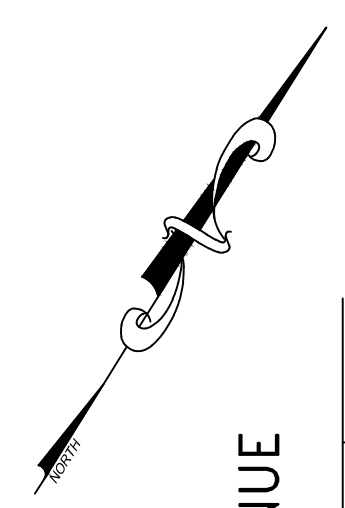


CONDO QUALIFIER	SQUARE FOOTAGE
C0001	1443 SF.
C0002	2273 SF.



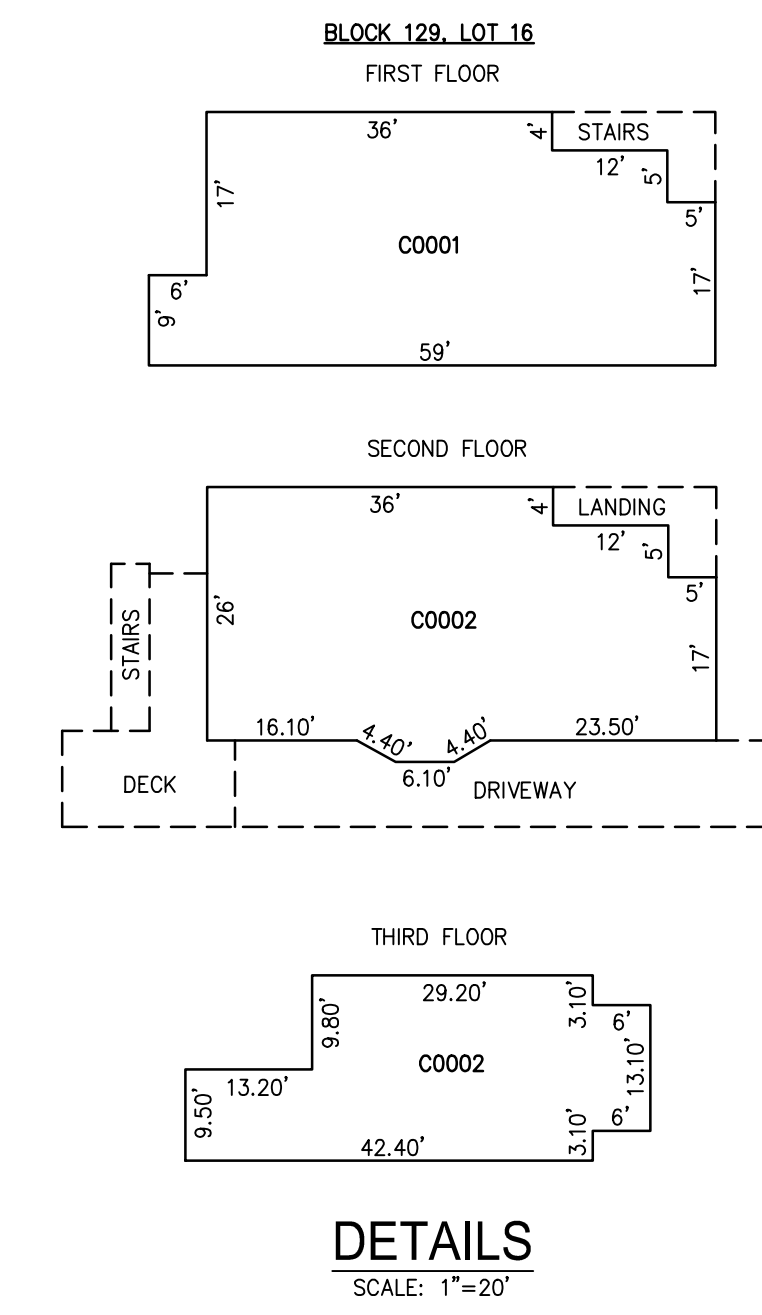
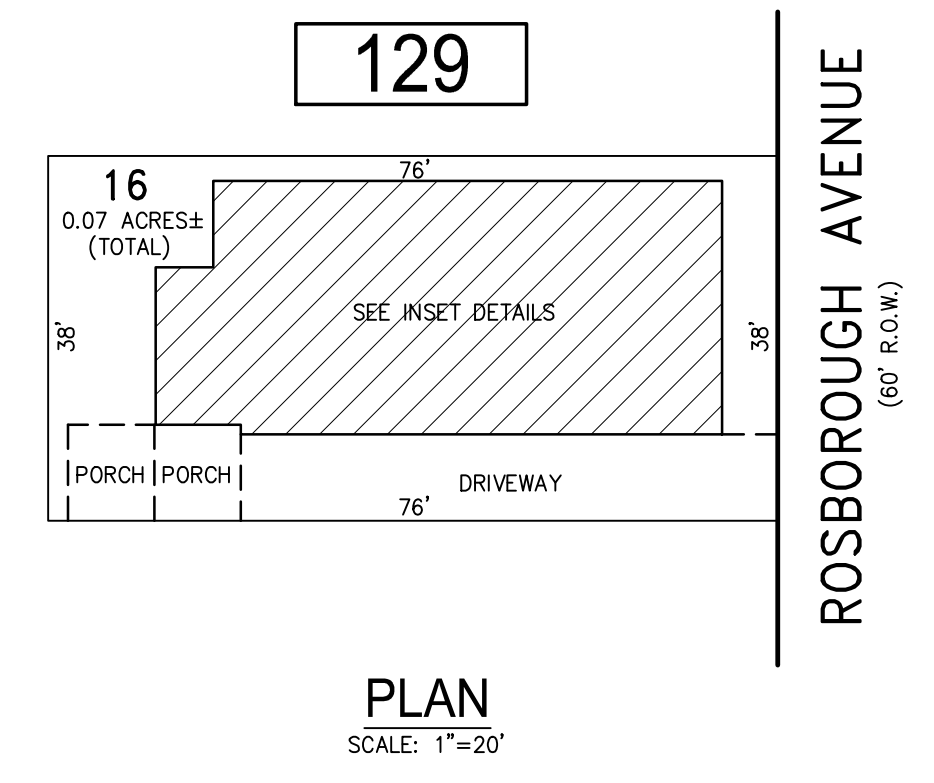
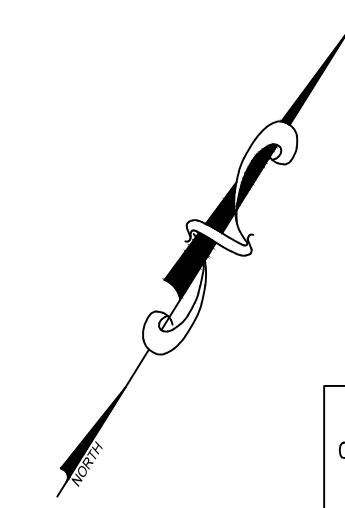
CONDO QUALIFIER	SQUARE FOOTAGE
C0001	1478 SF.
C0002	1552 SF.

BLOCK 128, LOT 6  
5 NORTH ROSBOROUGH AVENUE CONDOMINIUM



CONDO QUALIFIER	SQUARE FOOTAGE
C0001	1632 SF.
C0002	1632 SF.

BLOCK 129, LOT 22  
8 NORTH ROSBOROUGH AVENUE CONDOMINIUM



CONDO QUALIFIER	SQUARE FOOTAGE
C0001	1378 SF.
C0002	1945 SF.

BLOCK 129, LOT 16  
20 NORTH ROSBOROUGH AVENUE CONDOMINIUM

"THIS TAX MAP SHEET HAS BEEN DIGITALLY REVISED USING COMPUTER-AIDED DRAFTING/DESIGN (CADD) & COORDINATE GEOMETRY (COGO). IT IS BASED ON THE ORIGINAL DIGITALLY DRAWN TAX MAP PLATE BEARING THE OFFICIAL NEW JERSEY DIVISION TAXATION APPROVAL STAMP WITH APPROVAL DATE JULY, 20, 2016. SERIAL NUMBER 1070 AND SIGNATURE OF JUDY P. MILLER, CTA, CHIEF PROPERTY ADMINISTRATION AND SHELLY REILLY, CTA, PRINCIPAL FIELD REPRESENTATIVE. THE ORIGINAL DIGITALLY DRAWN TAX MAP PLATE WITH THE OFFICIAL APPROVAL STAMP IS ON FILE WITH REMINGTON & VERNICK ENGINEERS."

**TAX MAP**  
**CITY OF VENTNOR**  
ATLANTIC COUNTY NEW JERSEY  
SCALE: NOTED DATE: 2-19-2015

**CHARLES E. ADAMSON** NJ PROFESSIONAL LAND SURVEYOR LIC. NO. 42627  
24 GA 28048700

**RV & W** **REMINGTON, VERNICK & WALBERG ENGINEERS**  
845 N. MAIN STREET, PLEASANTVILLE, NJ 08232  
(609) 645-700, FAX (609) 645-7076  
WEB SITE ADDRESS: WWW.RVE.COM  
TO SHOW CONDITIONS AS OF 2-03-2023

BLOCK 129, LOT 13  
BLOCK 129, LOT 16  
BLOCK 129, LOT 22  
SEE SHEET 23