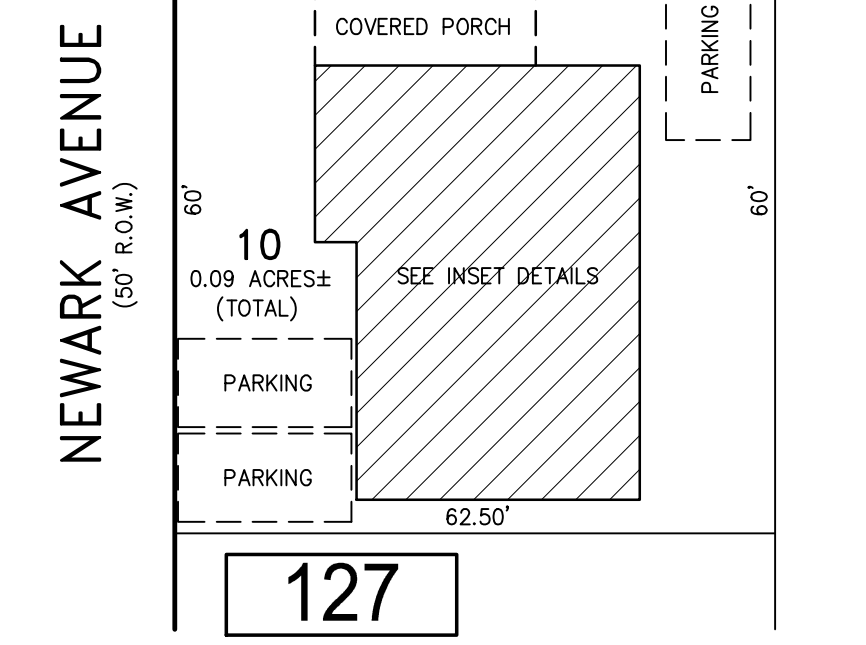


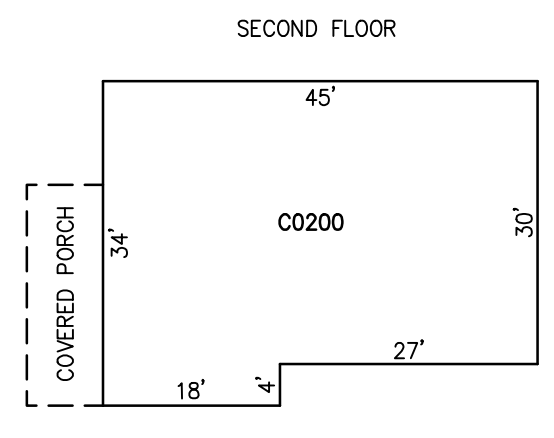
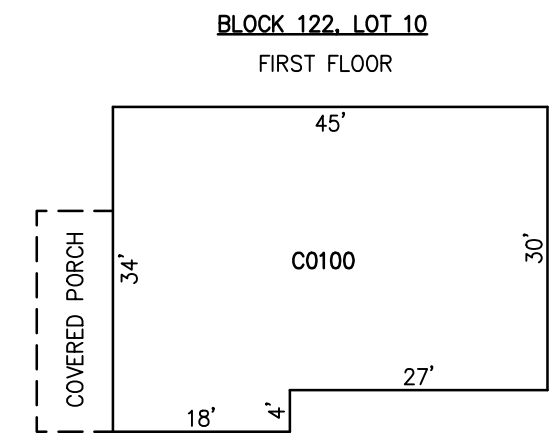
REVISIONS		
DATE	NAME	NO.
2-23-2018	CHARLES E. ADAMSON	42627
1-21-2019	CHARLES E. ADAMSON	42627
2-10-2021	CHARLES E. ADAMSON	42627

NOTE:
THIS SHEET HAS BEEN DRAWN USING COMPUTER AIDED DRAFTING/DESIGN (CAD/D) AND COORDINATE GEOMETRY (COGO).

WINCHESTER AVENUE
(50' R.O.W.)



127
PLAN
SCALE: 1"=20'

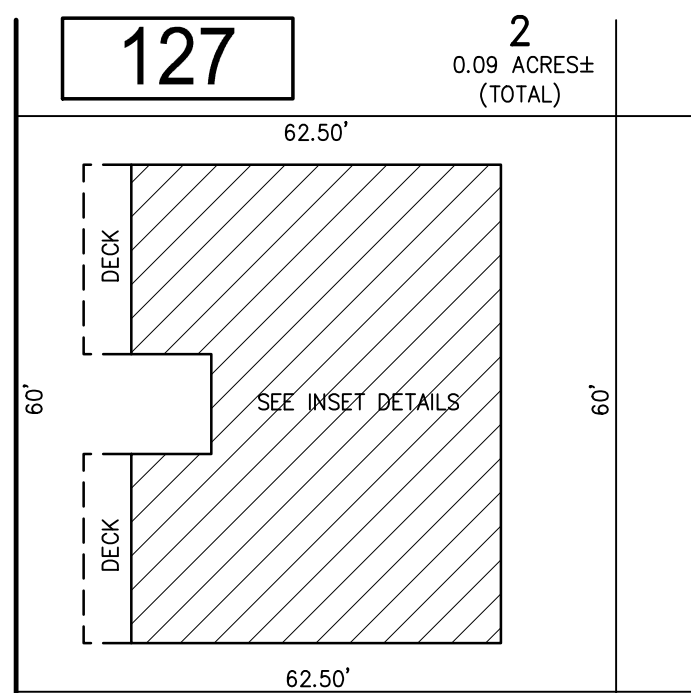


DETAILS
SCALE: 1"=20'

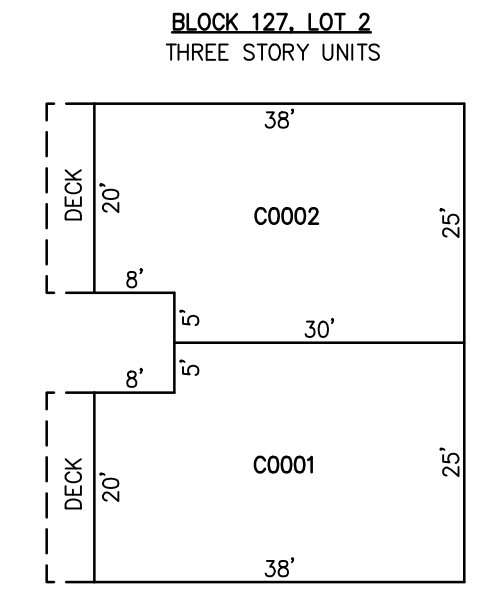
CONDO QUALIFIER	SQUARE FOOTAGE
C0100	1400 SF.
C0200	1400 SF.

BLOCK 127, LOT 10
29 NORTH NEWARK AVENUE CONDOMINIUM

NEWARK AVENUE
(50' R.O.W.)



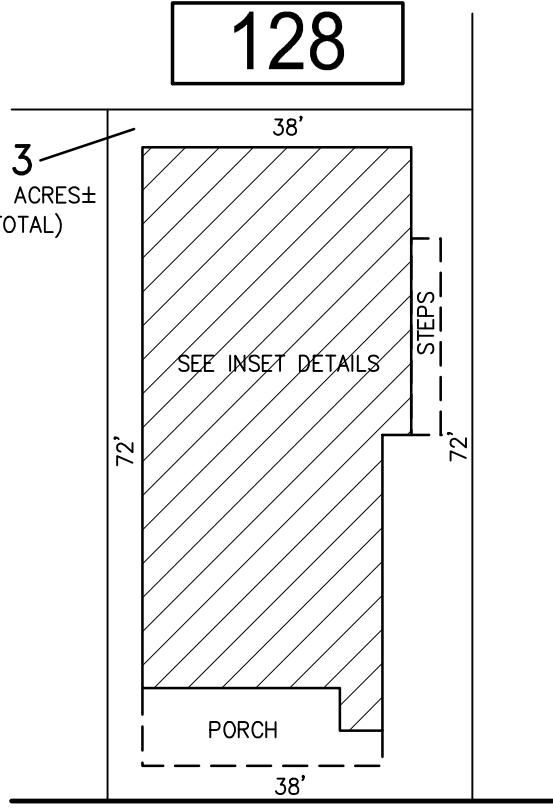
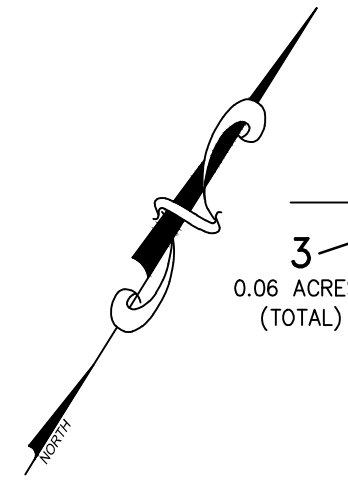
127
PLAN
SCALE: 1"=20'



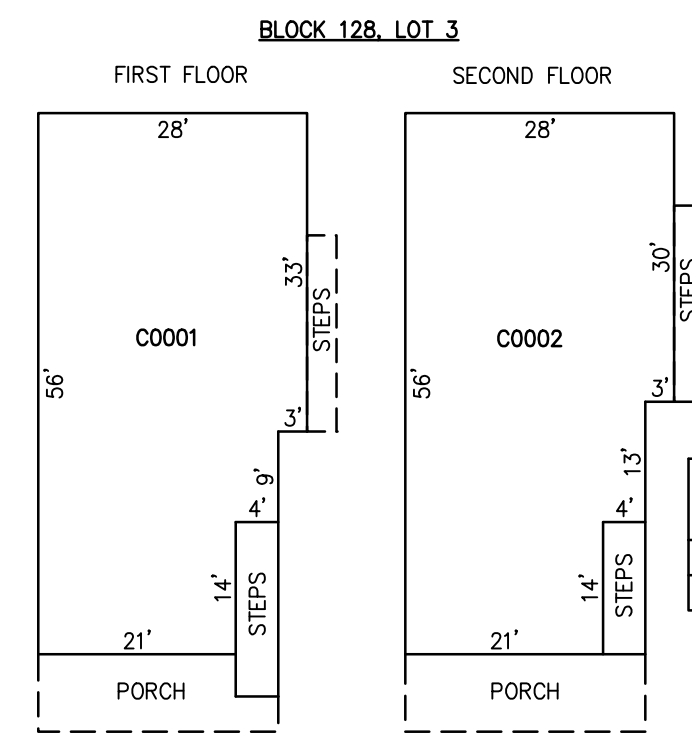
DETAILS
SCALE: 1"=20'

CONDO QUALIFIER	SQUARE FOOTAGE
C0001	2545 SF.
C0002	2545 SF.

BLOCK 127, LOT 2
5-7 NORTH NEWARK AVENUE CONDOMINIUM



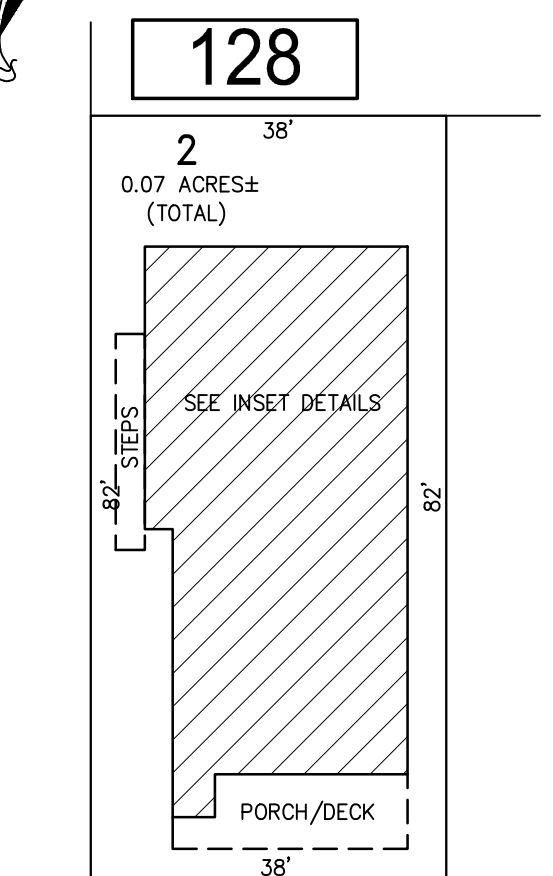
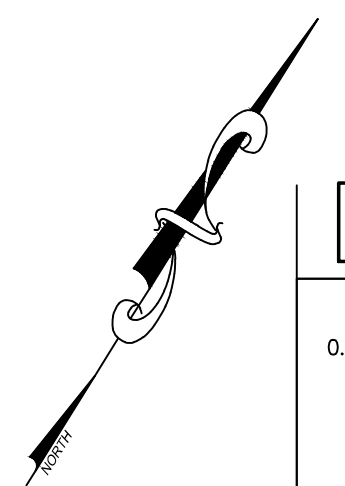
128
PLAN
SCALE: 1"=20'



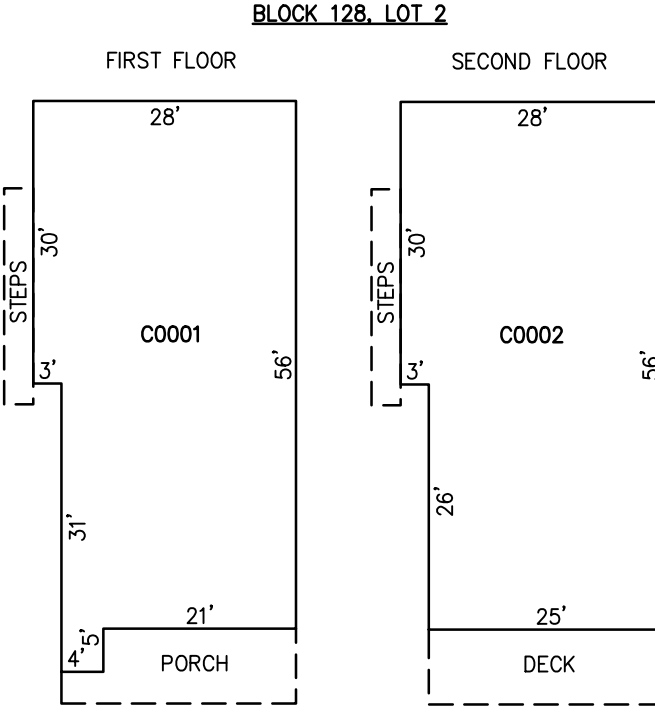
DETAILS
SCALE: 1"=20'

CONDO QUALIFIER	SQUARE FOOTAGE
C0001	1535 SF.
C0002	1535 SF.

BLOCK 128, LOT 3
6905 VENTNOR AVENUE CONDOMINIUM



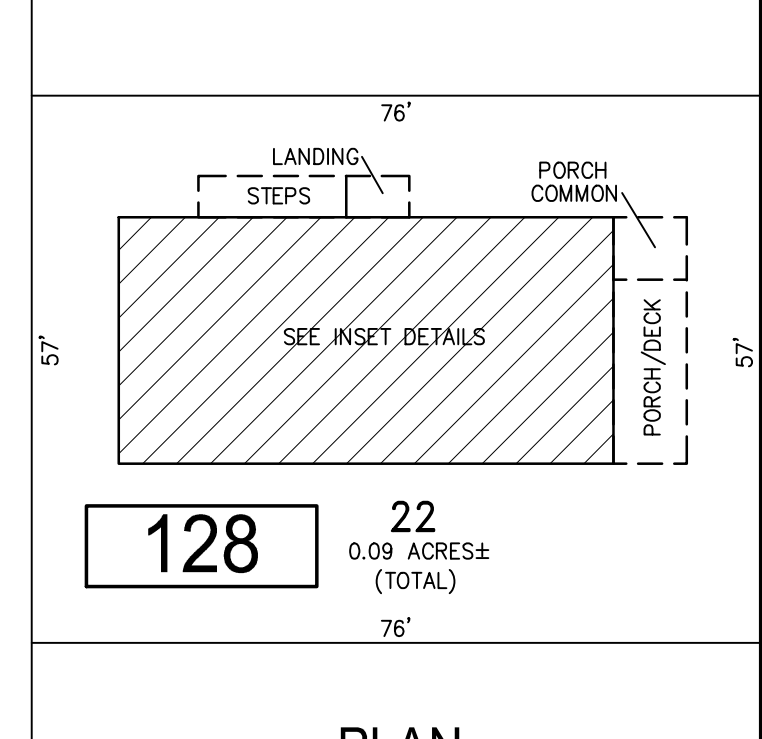
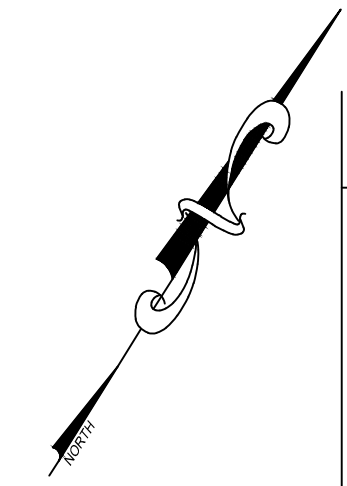
128
PLAN
SCALE: 1"=20'



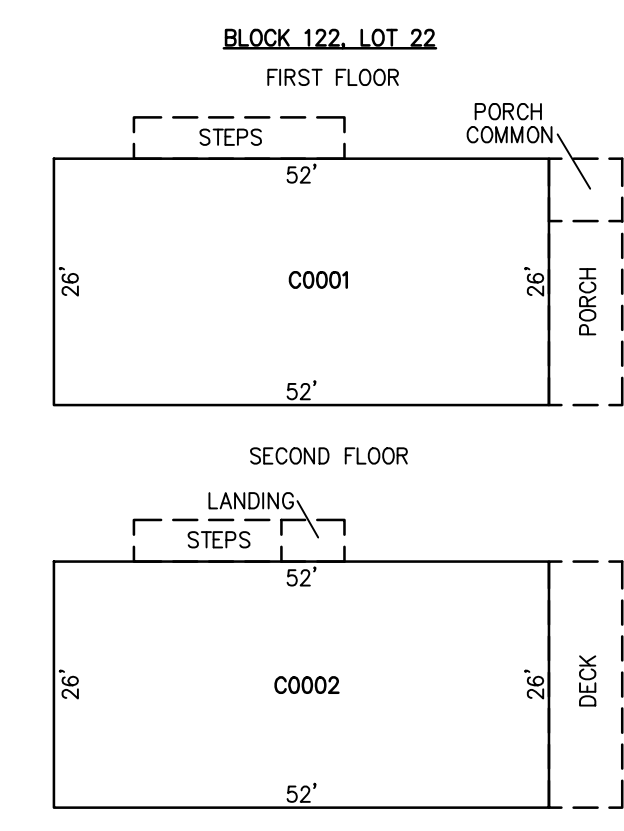
DETAILS
SCALE: 1"=20'

CONDO QUALIFIER	SQUARE FOOTAGE
C0001	1490 SF.
C0002	1490 SF.

BLOCK 128, LOT 2
6903 VENTNOR AVENUE CONDOMINIUM



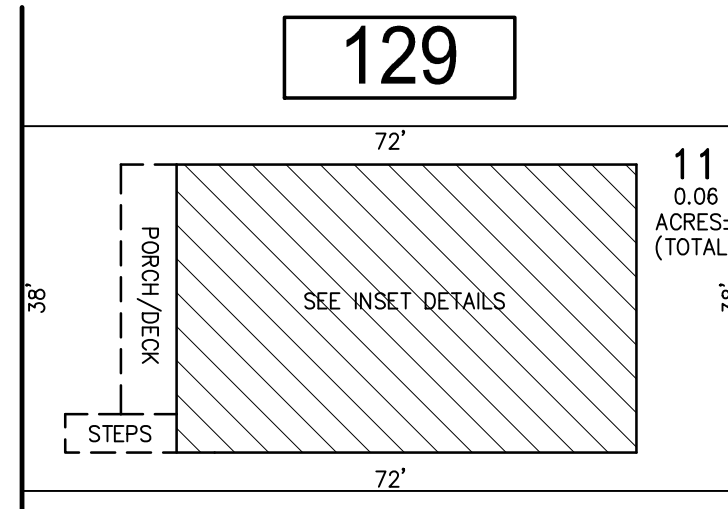
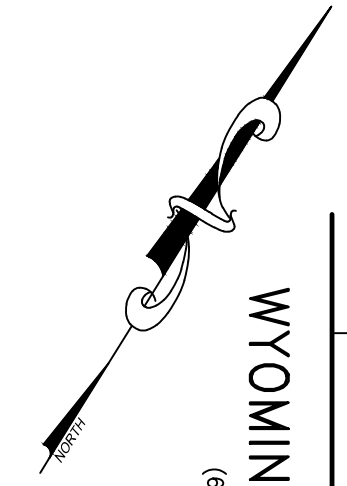
128
PLAN
SCALE: 1"=20'



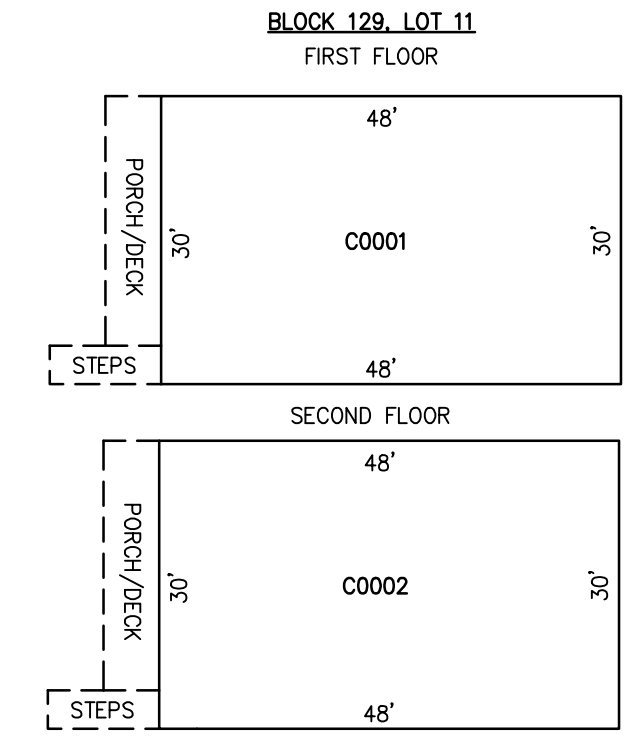
DETAILS
SCALE: 1"=20'

CONDO QUALIFIER	SQUARE FOOTAGE
C0001	1250 SF.
C0002	1225 SF.

BLOCK 128, LOT 22
6-8 NORTH NEWARK AVENUE CONDOMINIUM



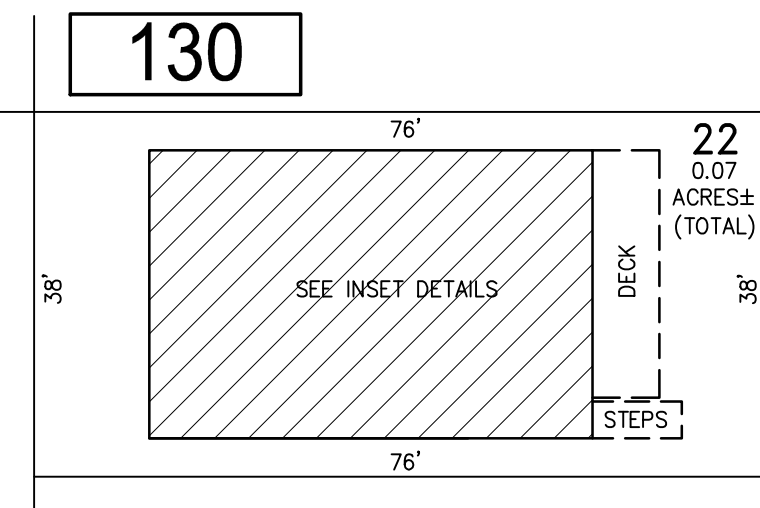
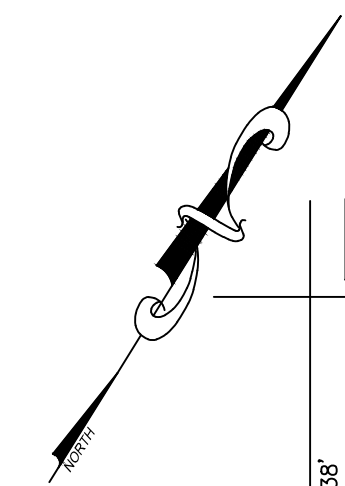
129
PLAN
SCALE: 1"=20'



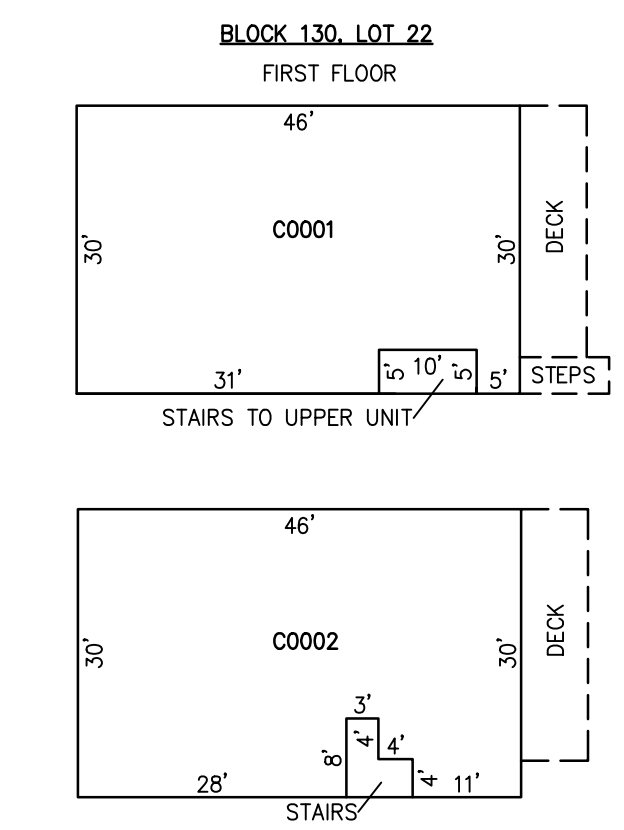
DETAILS
SCALE: 1"=20'

CONDO QUALIFIER	SQUARE FOOTAGE
C0001	1410 SF.
C0002	1410 SF.

BLOCK 129, LOT 11
17 N. WYOMING AVENUE CONDOMINIUM



130
PLAN
SCALE: 1"=20'



DETAILS
SCALE: 1"=20'

CONDO QUALIFIER	SQUARE FOOTAGE
C0001	1385 SF.
C0002	1410 SF.

BLOCK 130, LOT 22
10 NORTH WYOMING AVENUE CONDOMINIUM

BLOCK 127, LOT 2
BLOCK 127, LOT 10
BLOCK 128, LOT 2
BLOCK 128, LOT 3
BLOCK 128, LOT 22
BLOCK 129, LOT 11
BLOCK 130, LOT 22
SEE SHEET 23

"THIS TAX MAP SHEET HAS BEEN DIGITALLY REVISED USING COMPUTER-AIDED DRAFTING/DESIGN (CADD) & COORDINATE GEOMETRY (COGO). IT IS BASED ON THE ORIGINAL DIGITALLY DRAWN TAX MAP PLATE BEARING THE OFFICIAL NEW JERSEY DIVISION TAXATION APPROVAL STAMP WITH APPROVAL DATE JULY, 20, 2016. SERIAL NUMBER 1070 AND SIGNATURE OF JUDY P. MILLER, CTA, CHIEF PROPERTY ADMINISTRATION AND SHELLY REILLY, CTA, PRINCIPAL FIELD REPRESENTATIVE. THE ORIGINAL DIGITALLY DRAWN TAX MAP PLATE WITH THE OFFICIAL APPROVAL STAMP IS ON FILE WITH REMINGTON & VERNICK ENGINEERS."

TAX MAP
CITY OF VENTNOR
ATLANTIC COUNTY NEW JERSEY
SCALE: NOTED DATE: 2-19-2015

CHARLES E. ADAMSON NJ PROFESSIONAL LAND SURVEYOR LIC. NO. 42627
24 GA 28048700

RV & W REMINGTON, VERNICK & WALBERG ENGINEERS
845 N. MAIN STREET, PLEASANTVILLE, NJ 08232
(609) 645-7700, FAX (609) 645-7076
WEB SITE ADDRESS: WWW.RVW.COM
TO SHOW CONDITIONS AS OF 2-03-2023