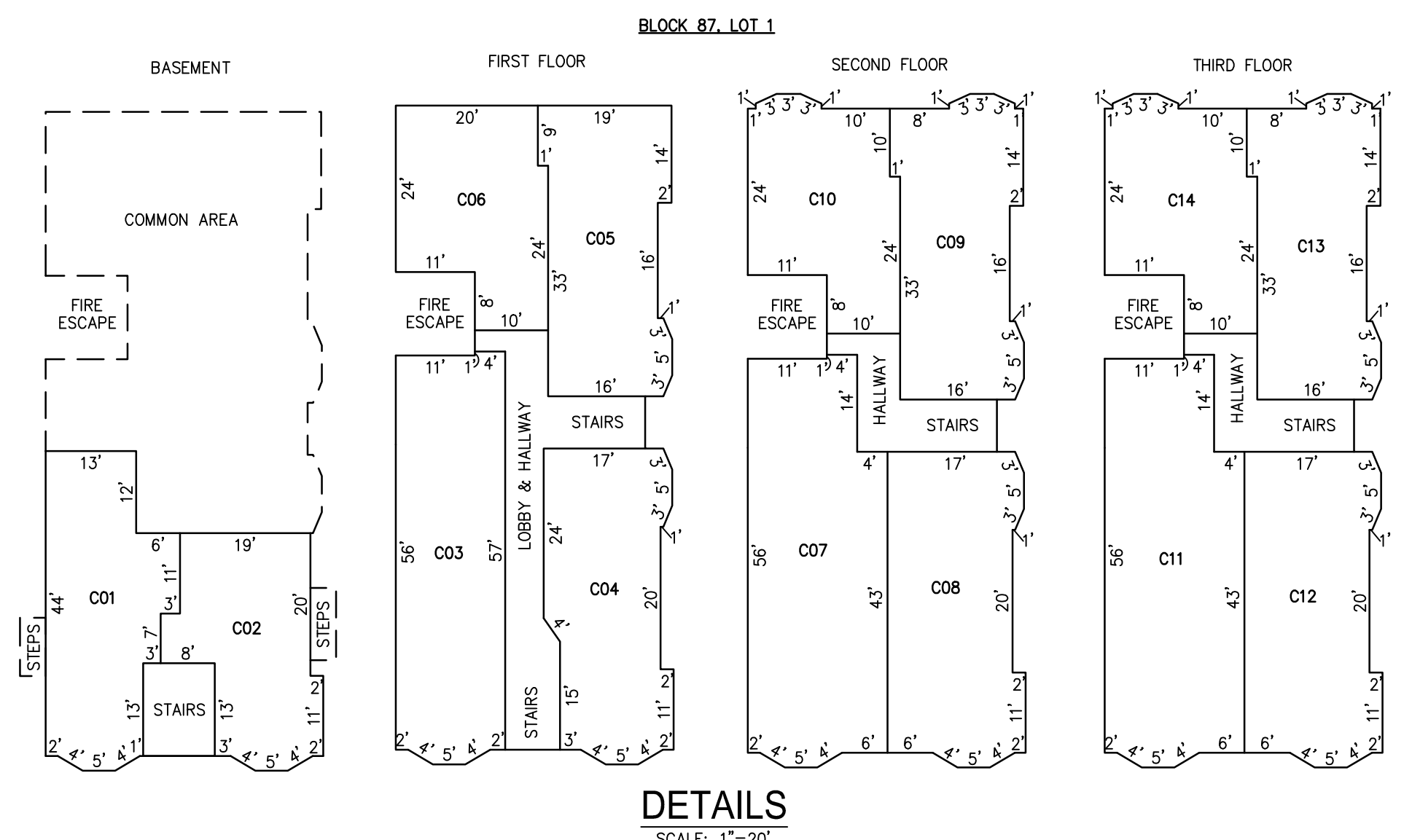
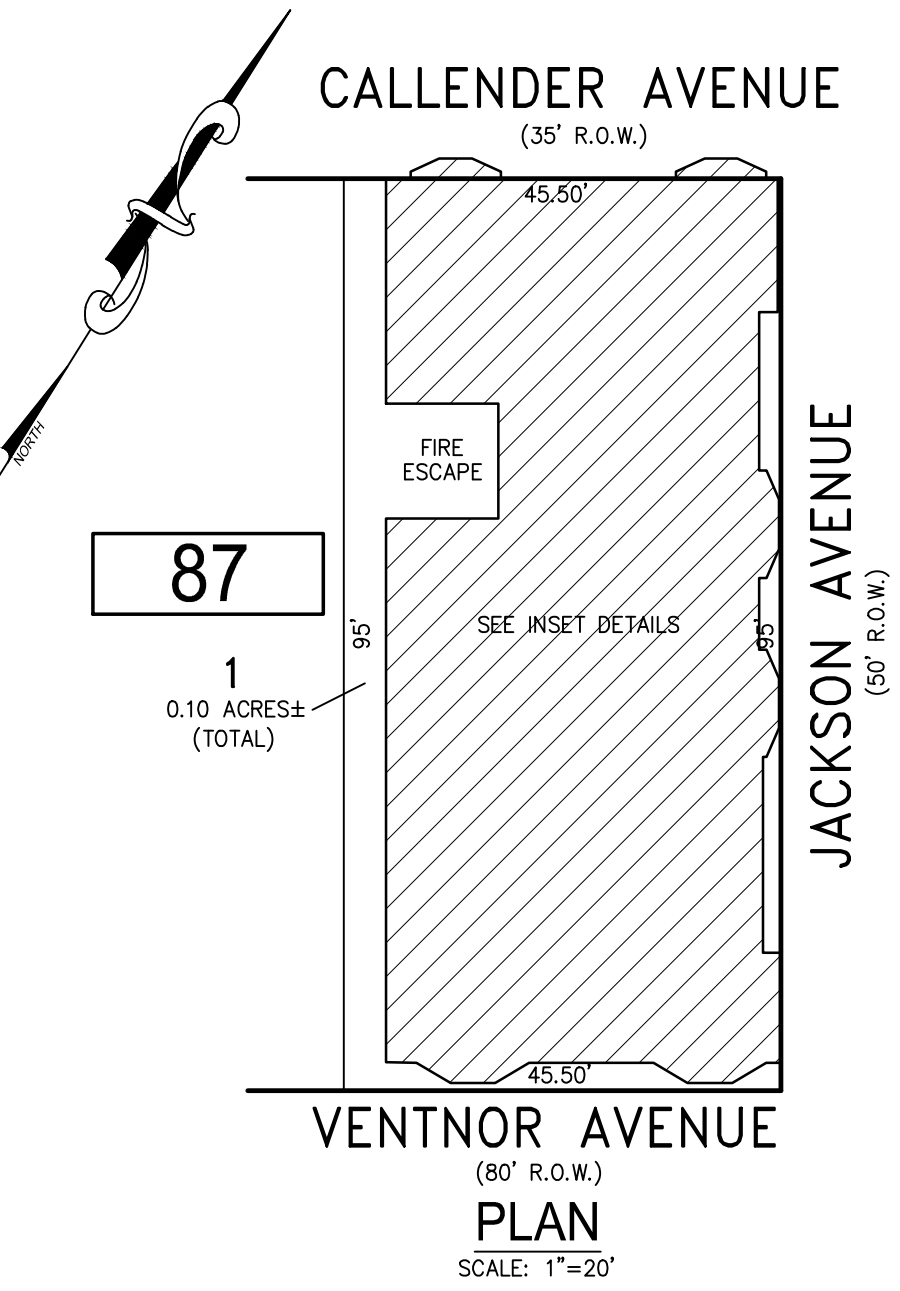


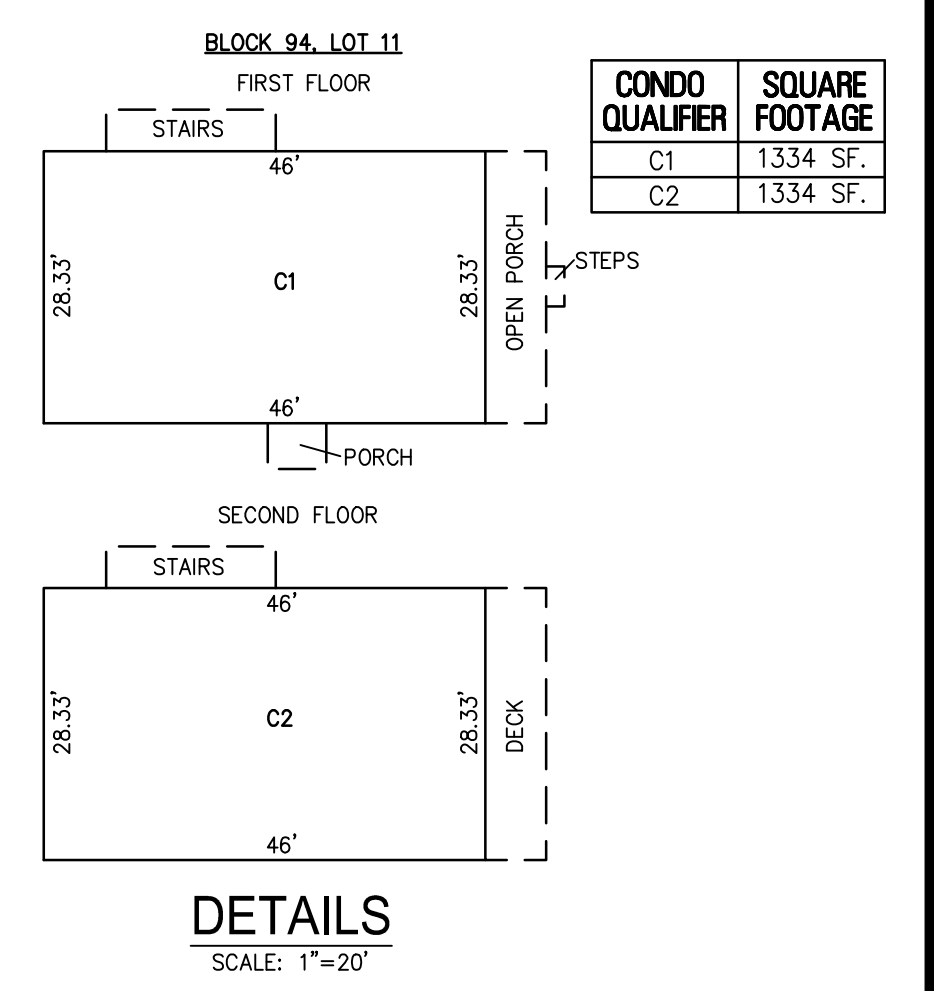
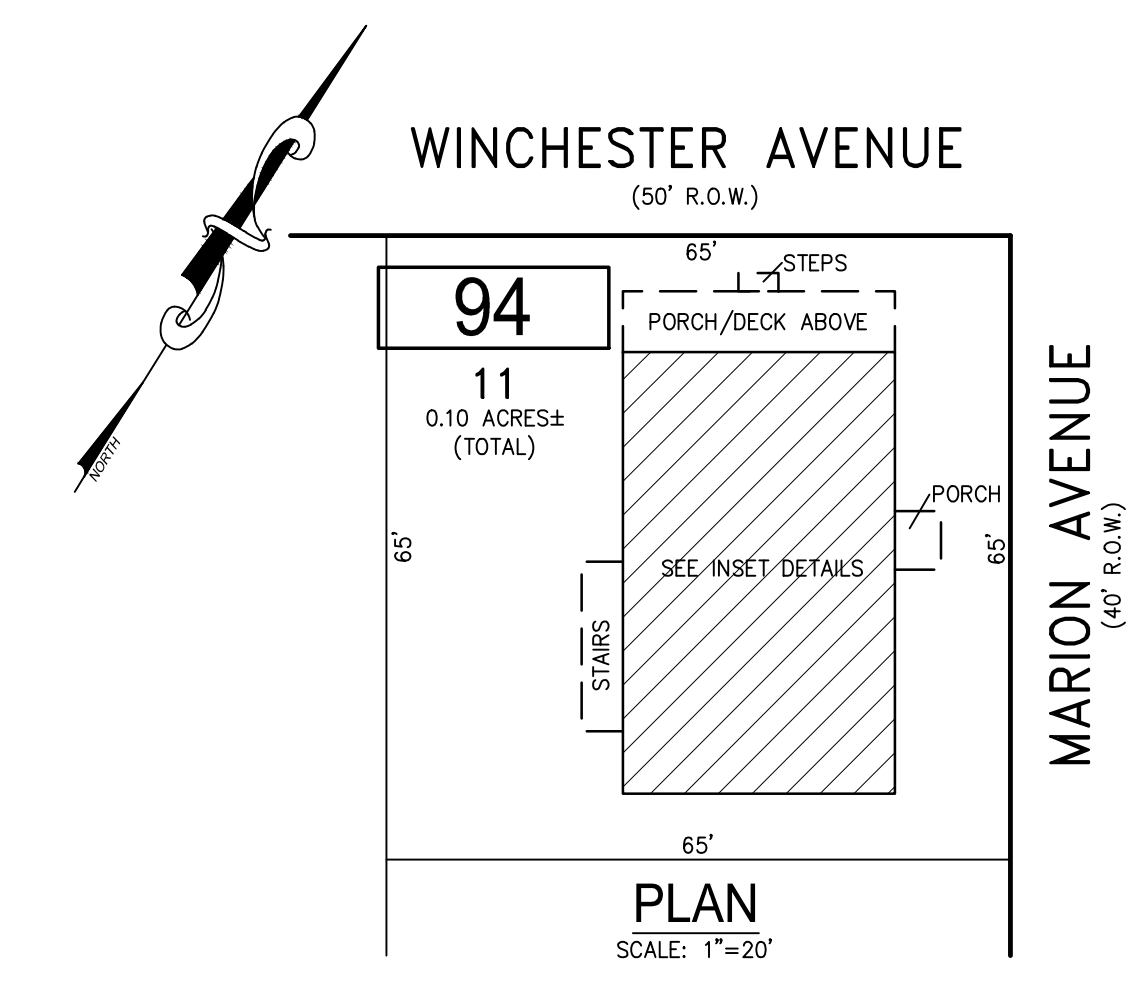
NOTE: THIS SHEET HAS BEEN DRAWN USING COMPUTER AIDED DRAFTING/DESIGN (CADD) AND COORDINATE GEOMETRY (COGO).

REVISIONS		
DATE	NAME	NO.
2-10-2021	CHARLES E. ADAMSON	42627



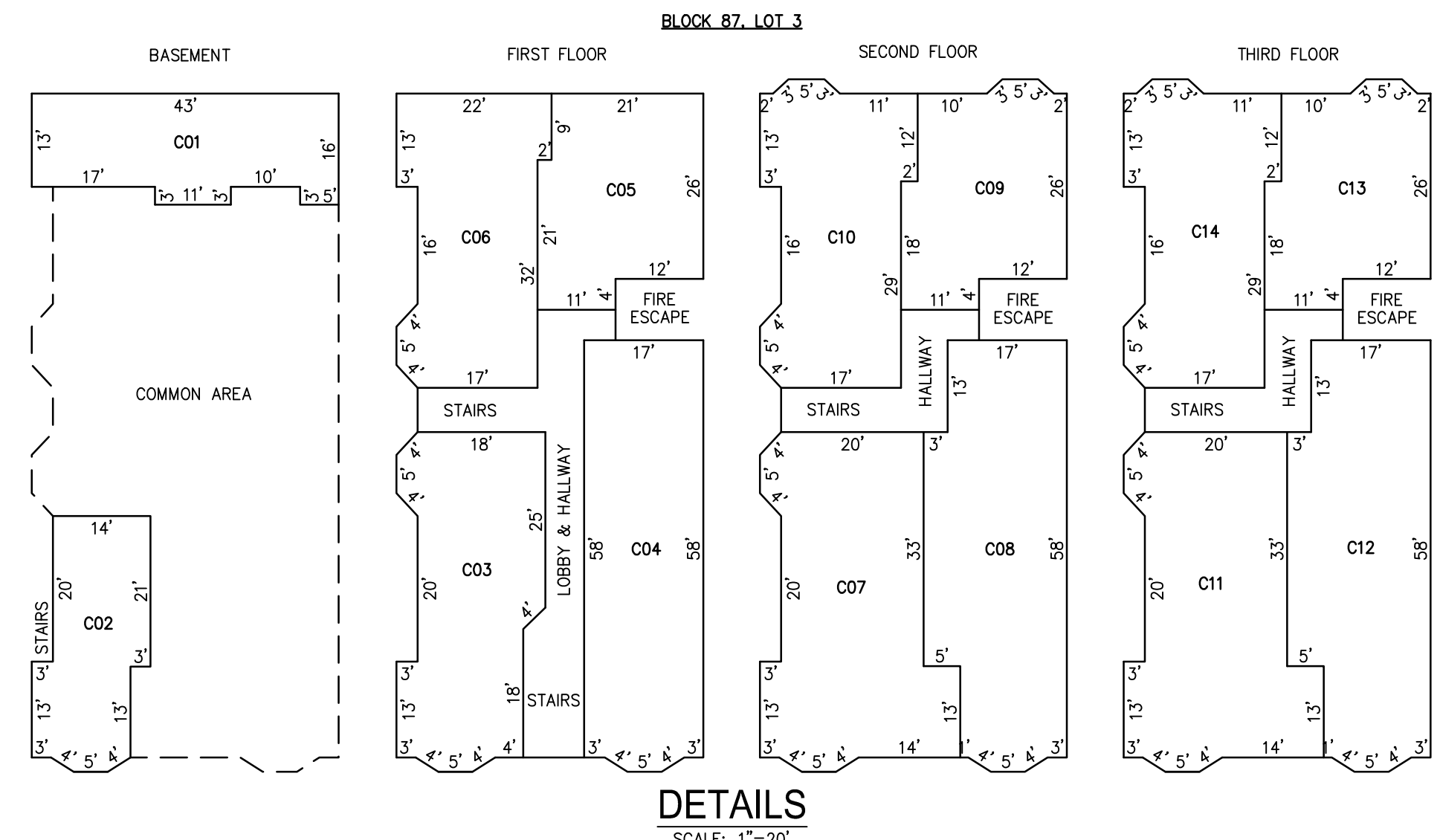
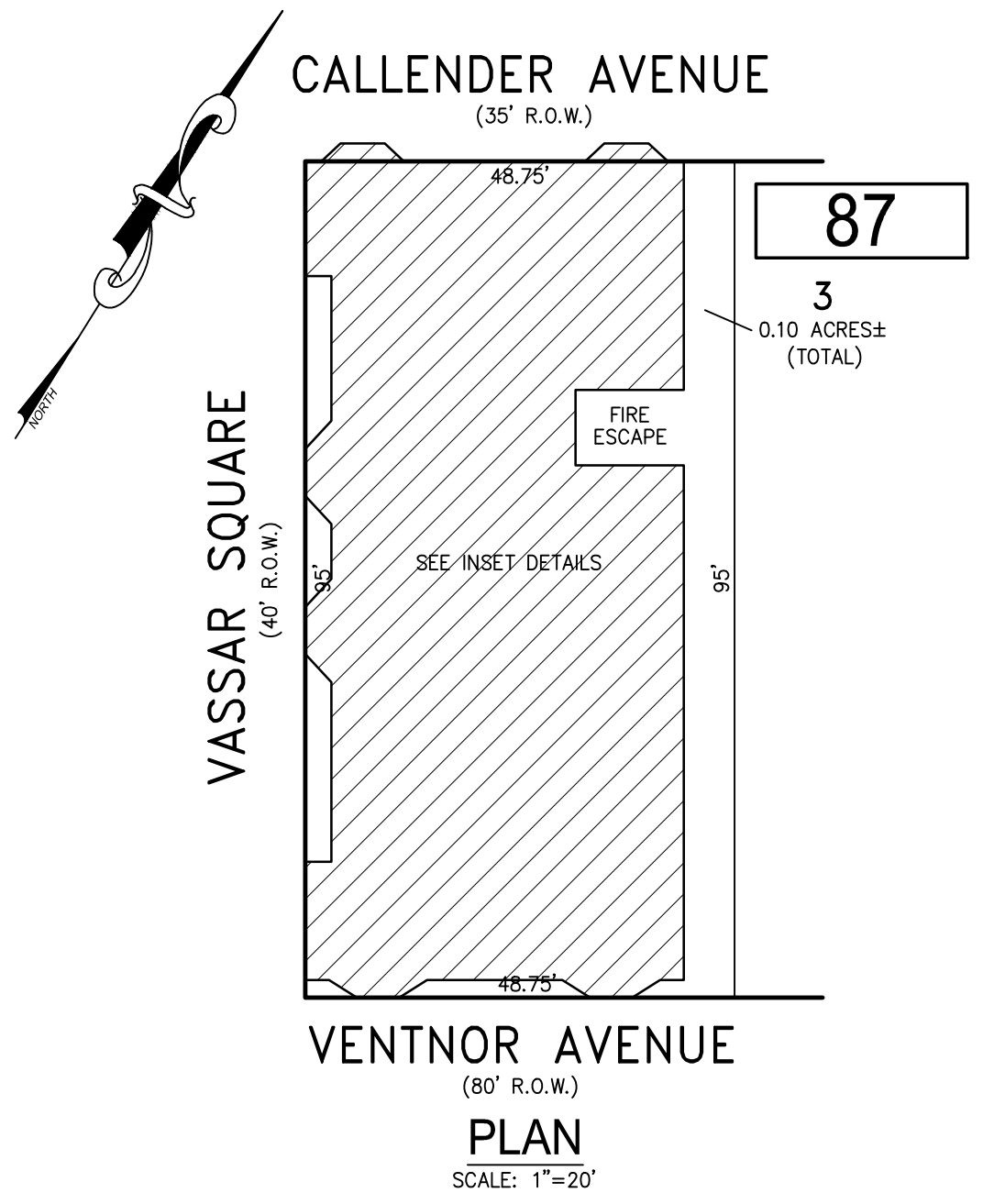
CONDO QUALIFIER	SQUARE FOOTAGE
C01	639 SF
C02	507 SF
C03	876 SF
C04	656 SF
C05	668 SF
C06	567 SF
C07	938 SF
C08	861 SF
C09	676 SF
C10	567 SF
C11	938 SF
C12	861 SF
C13	676 SF
C14	567 SF

DETAILS SCALE: 1"=20'
BLOCK 87, LOT 1
VENTNOR SAVOY EAST CONDOMINIUM
4801 VENTNOR AVENUE



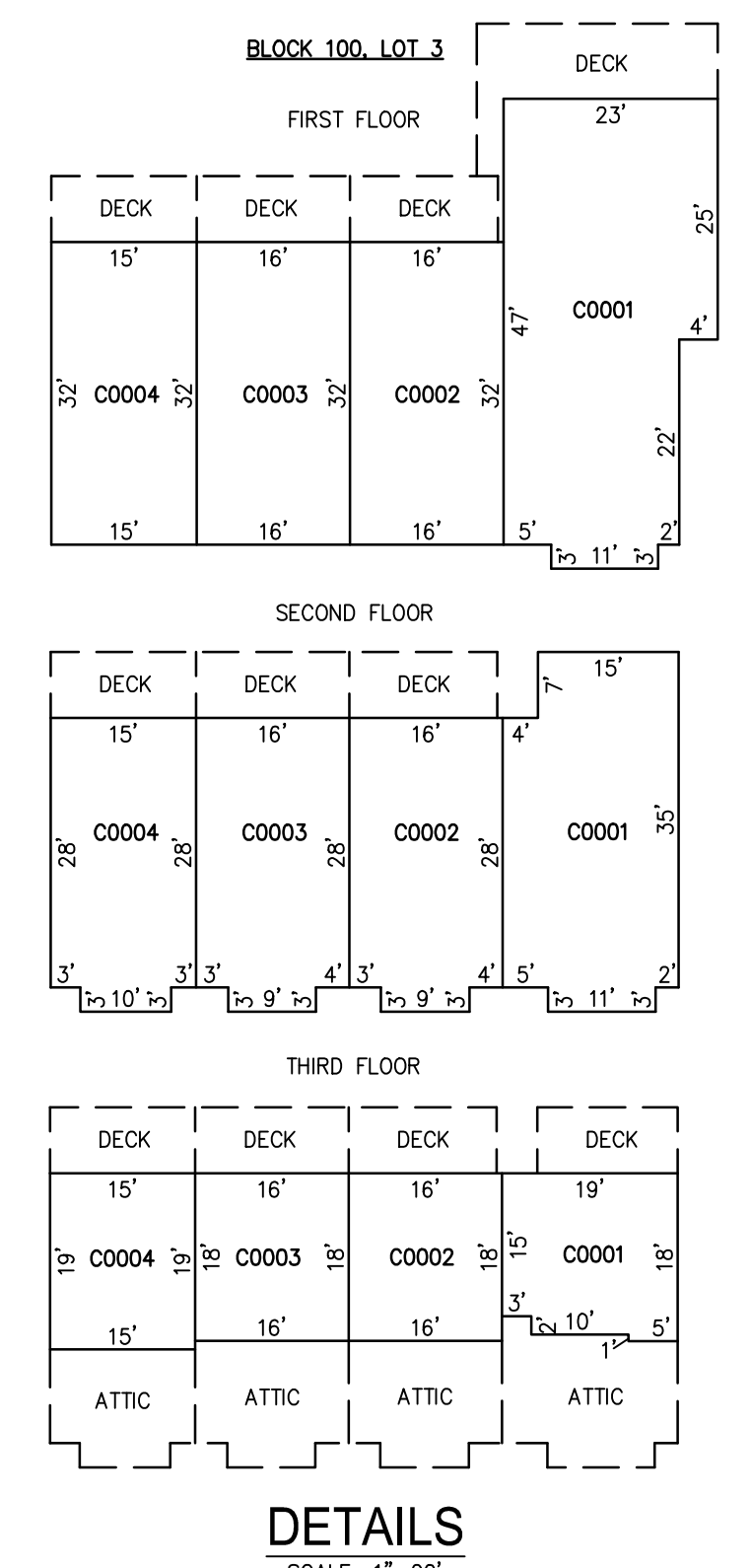
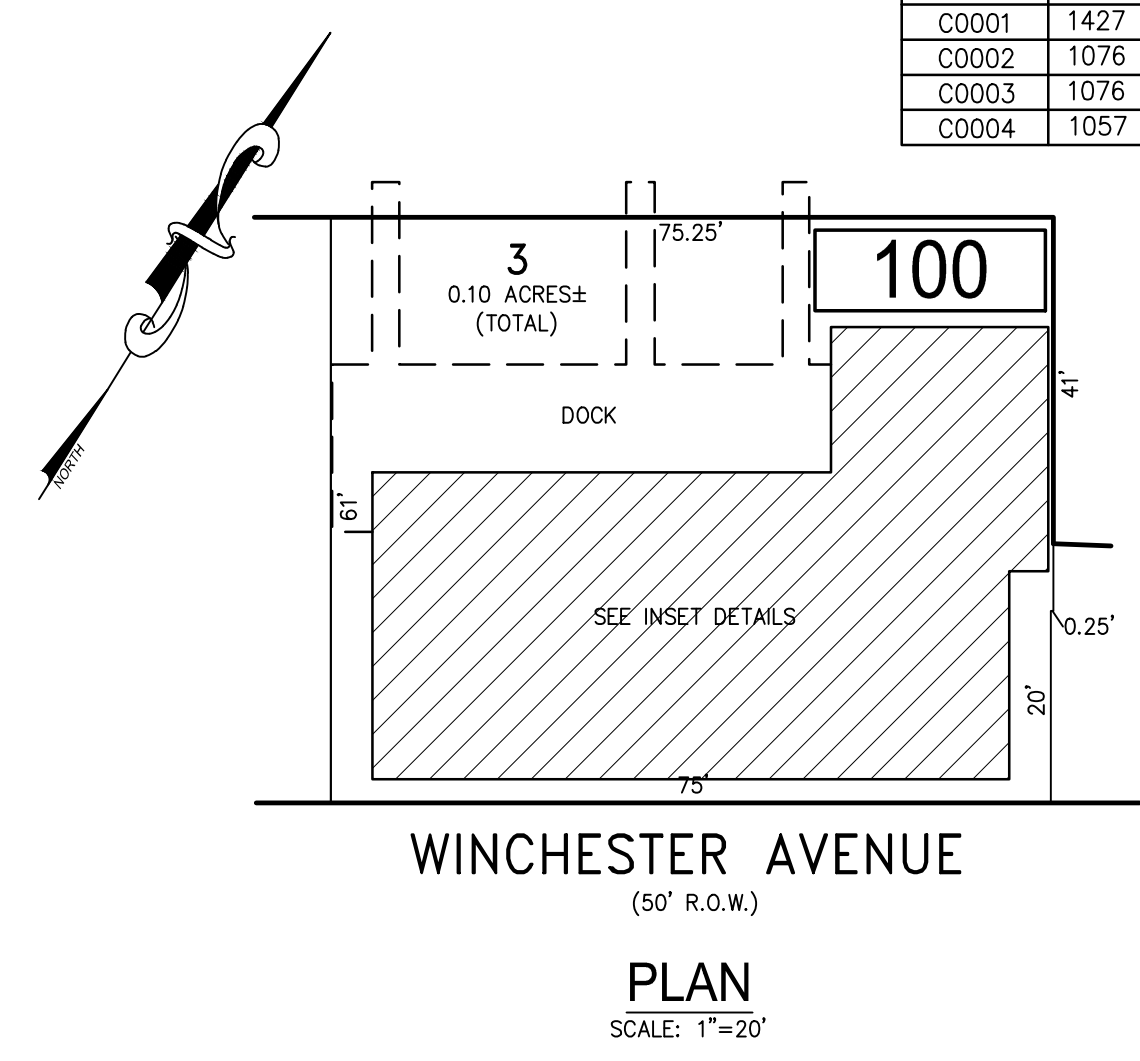
CONDO QUALIFIER	SQUARE FOOTAGE
C1	1334 SF
C2	1334 SF

DETAILS SCALE: 1"=20'
BLOCK 94, LOT 11
BAYMIST CONDOMINIUM
28 NORTH MARION AVENUE



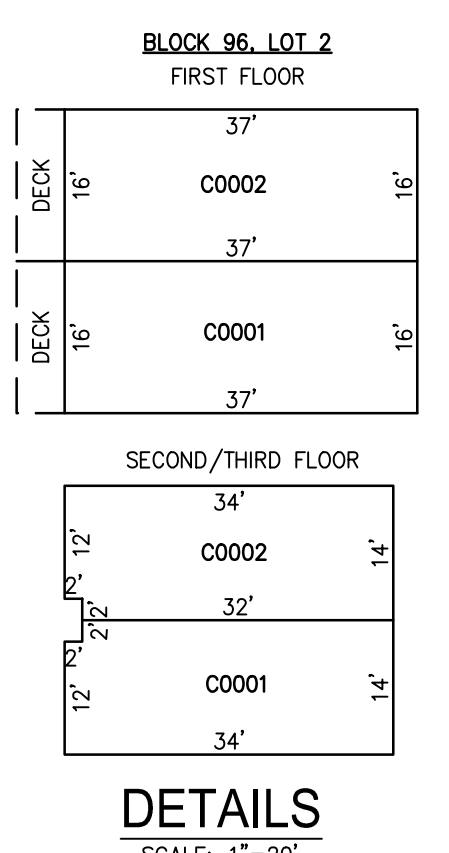
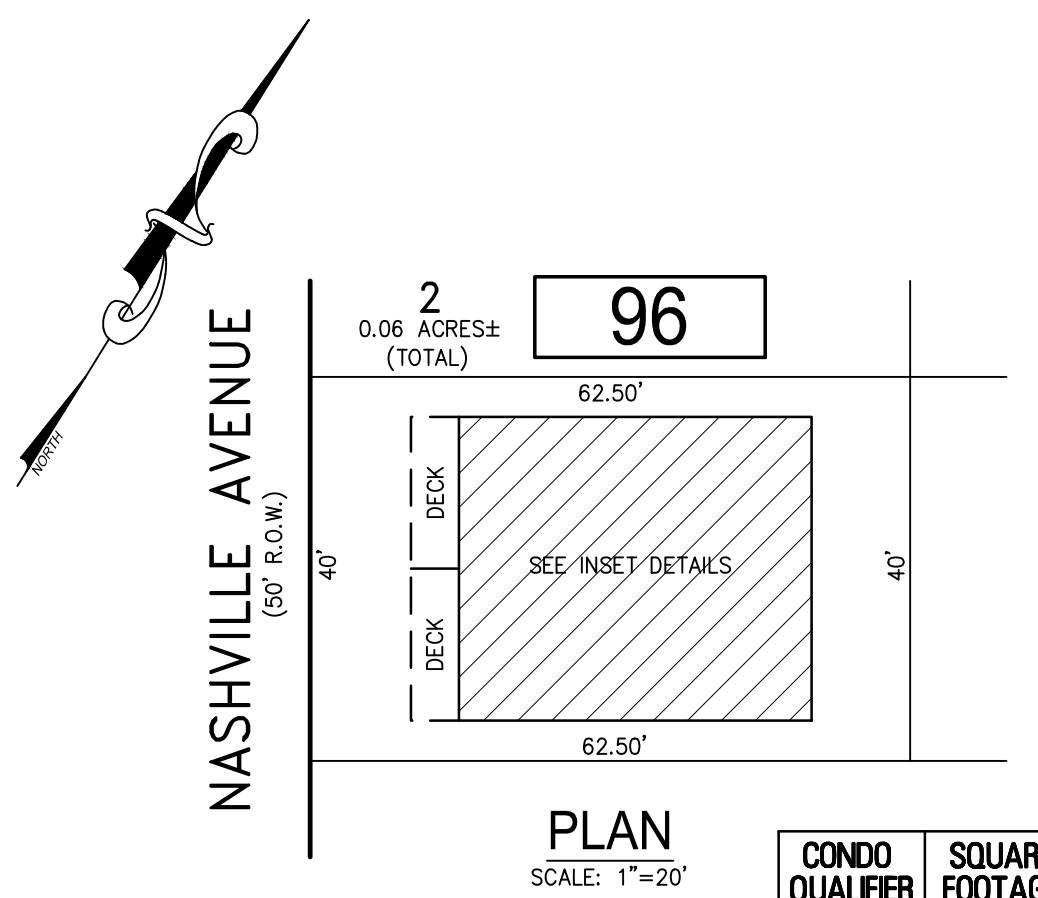
CONDO QUALIFIER	SQUARE FOOTAGE
C01	538 SF
C02	419 SF
C03	705 SF
C04	908 SF
C05	570 SF
C06	670 SF
C07	904 SF
C08	980 SF
C09	570 SF
C10	684 SF
C11	904 SF
C12	980 SF
C13	570 SF
C14	684 SF

DETAILS SCALE: 1"=20'
BLOCK 87, LOT 3
VENTNOR SAVOY WEST CONDOMINIUM
4805 VENTNOR AVENUE



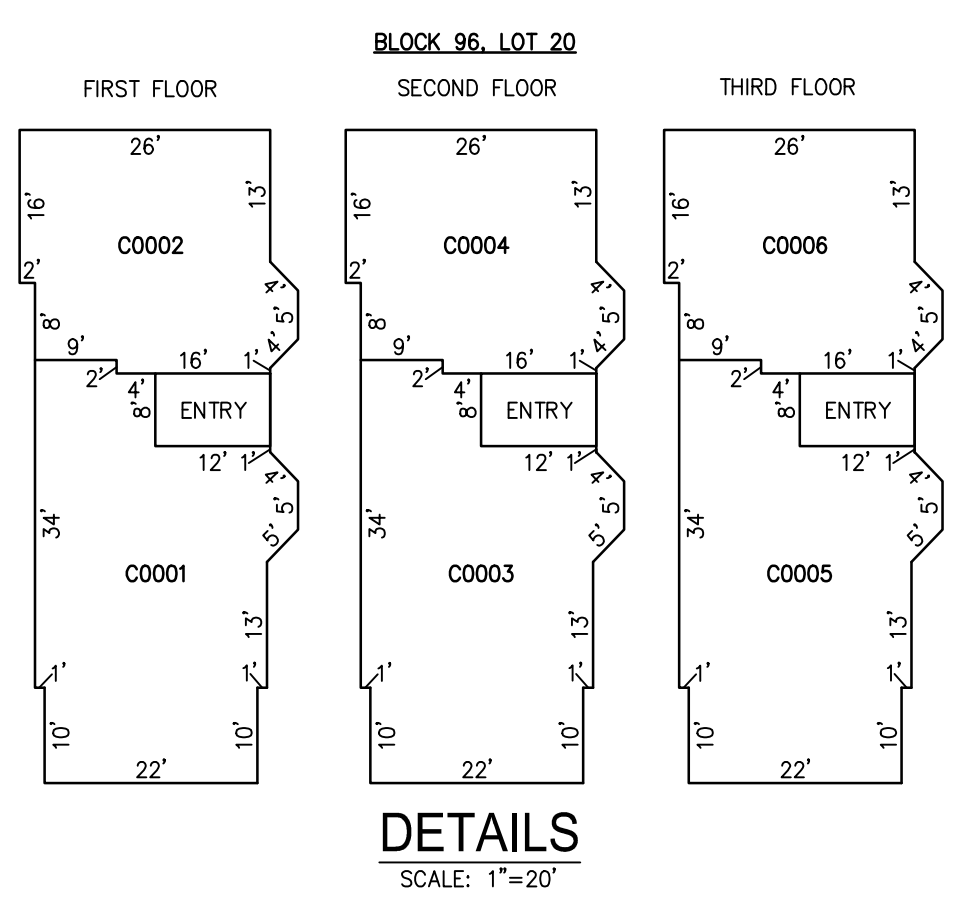
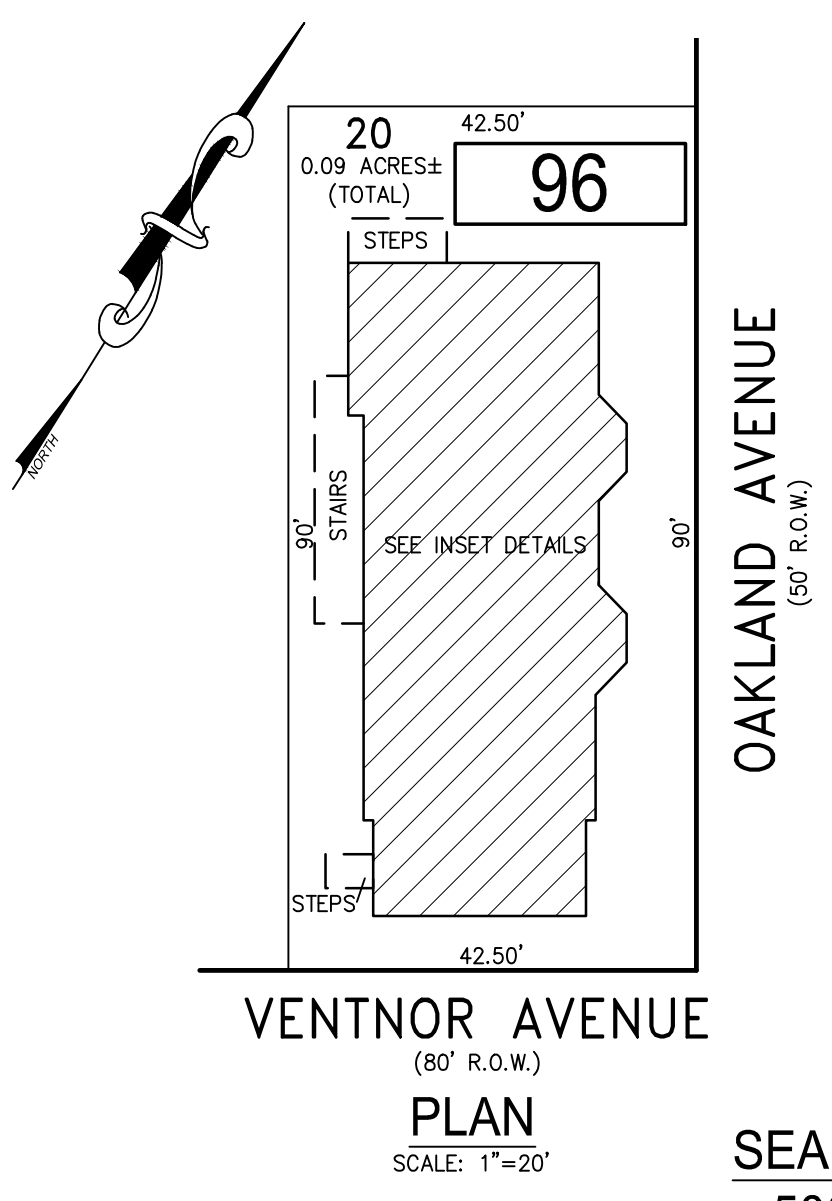
CONDO QUALIFIER	SQUARE FOOTAGE
C0001	1427 SF
C0002	1076 SF
C0003	1076 SF
C0004	1057 SF

DETAILS SCALE: 1"=20'
BLOCK 100, LOT 3
WINCHESTER DOCKSIDE CONDOMINIUM
5005 WINCHESTER AVENUE



CONDO QUALIFIER	SQUARE FOOTAGE
C0001	1595 SF
C0002	1595 SF

DETAILS SCALE: 1"=20'
BLOCK 96, LOT 2
3 NORTH NASHVILLE A CONDOMINIUM



CONDO QUALIFIER	SQUARE FOOTAGE
C0001	1020 SF
C0002	706 SF
C0003	1020 SF
C0004	706 SF
C0005	1020 SF
C0006	706 SF

DETAILS SCALE: 1"=20'
BLOCK 96, LOT 20
SEABRIGHT CONDOMINIUM
5007 VENTNOR AVENUE

BLOCK 87, LOT 1
BLOCK 87, LOT 3
BLOCK 94, LOT 11
BLOCK 96, LOT 2
BLOCK 96, LOT 20
BLOCK 100, LOT 3
SEE SHEET 17

"THIS TAX MAP SHEET HAS BEEN DIGITALLY REVISED USING COMPUTER-AIDED DRAFTING/DESIGN (CADD) & COORDINATE GEOMETRY (COGO). IT IS BASED ON THE ORIGINAL DIGITALLY DRAWN TAX MAP PLATE BEARING THE OFFICIAL NEW JERSEY DIVISION TAXATION APPROVAL STAMP WITH APPROVAL DATE JULY, 20, 2016, SERIAL NUMBER 1070 AND SIGNATURE OF JUDY P. MILLER, CTA, CHIEF PROPERTY ADMINISTRATION AND SHELLY REILLY, CTA, PRINCIPAL FIELD REPRESENTATIVE. THE ORIGINAL DIGITALLY DRAWN TAX MAP PLATE WITH THE OFFICIAL APPROVAL STAMP IS ON FILE WITH REMINGTON & VERNICK ENGINEERS."

TAX MAP
CITY OF VENTNOR
ATLANTIC COUNTY NEW JERSEY
SCALE: NOTED DATE: 2-19-2015
CHARLES E. ADAMSON NJ PROFESSIONAL LAND SURVEYOR LIC. NO. 42627
REMINGTON, VERNICK & WALBERG ENGINEERS
845 N. MAIN STREET, PLEASANTVILLE, NJ 08232
(609) 645-7700, FAX (609) 645-7076
WEB SITE ADDRESS: WWW.RVW.COM
TO SHOW CONDITIONS AS OF 2-03-2023