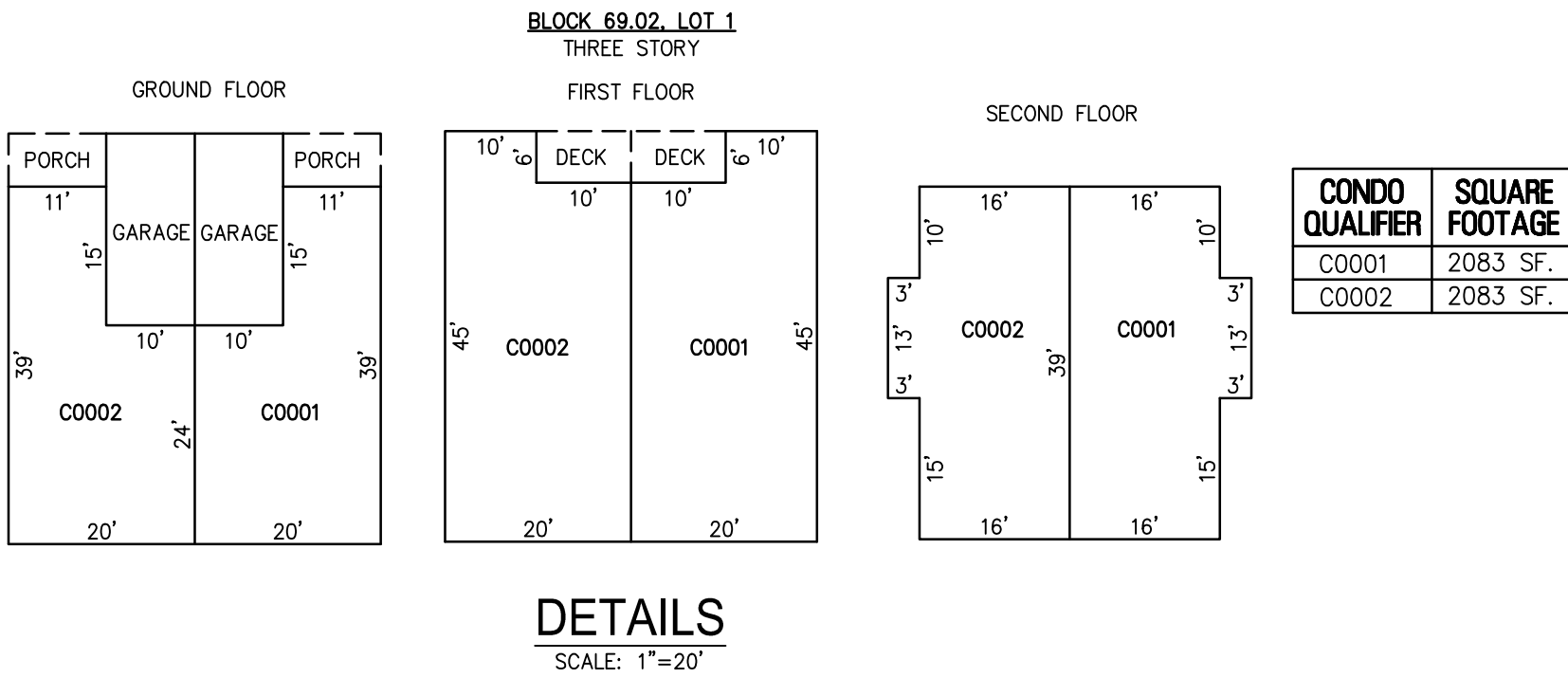
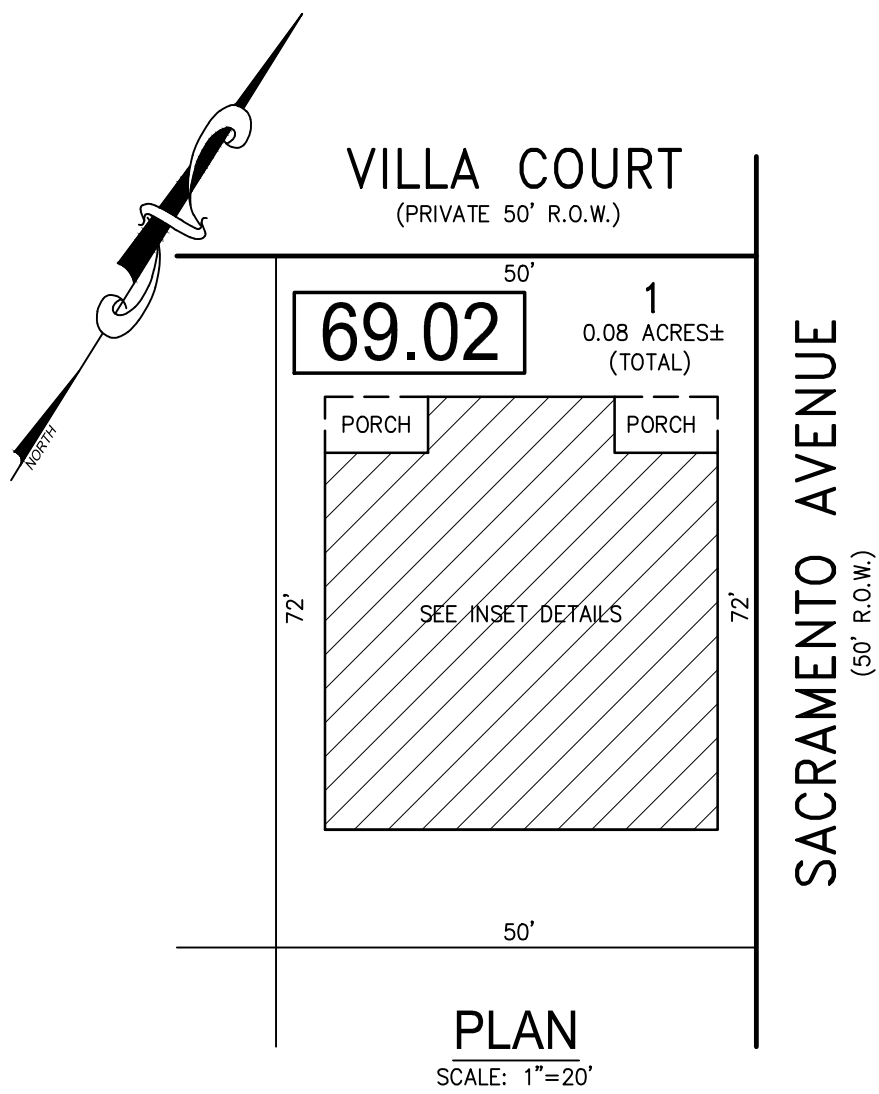
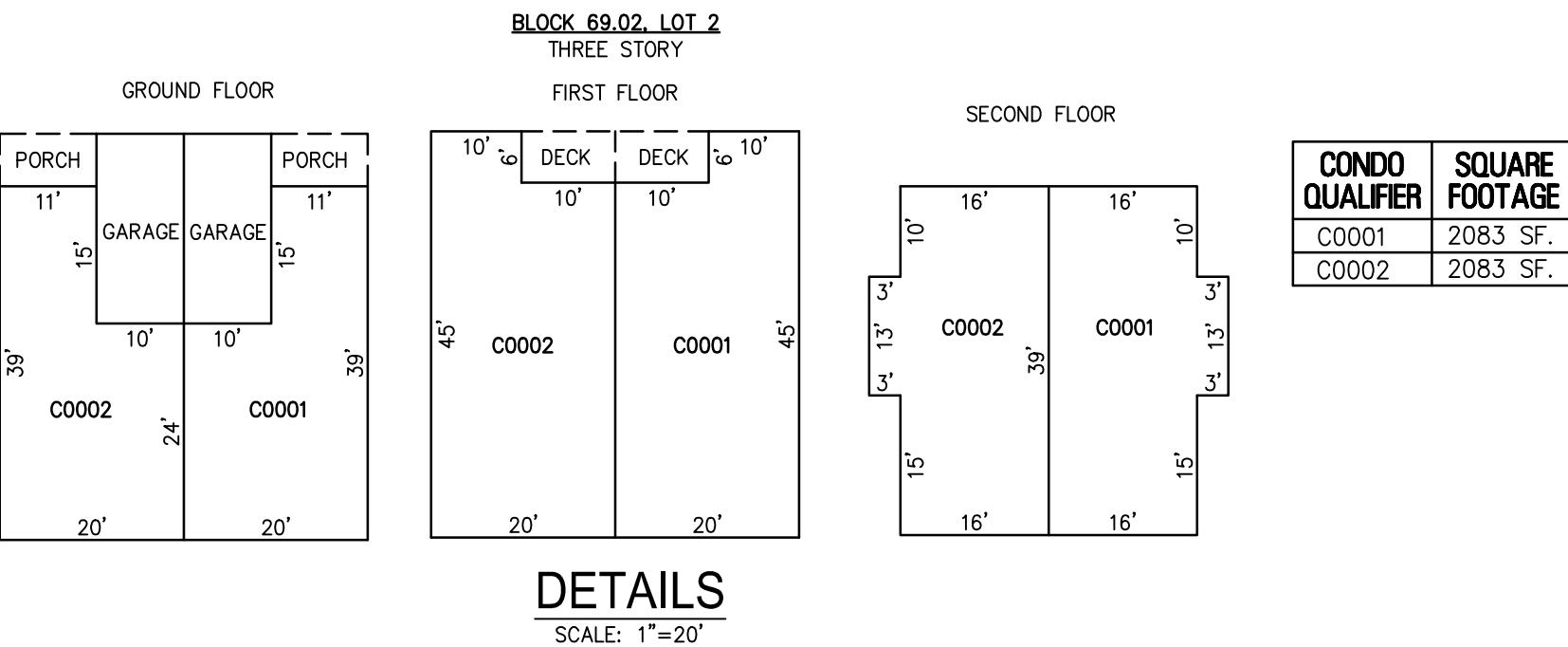
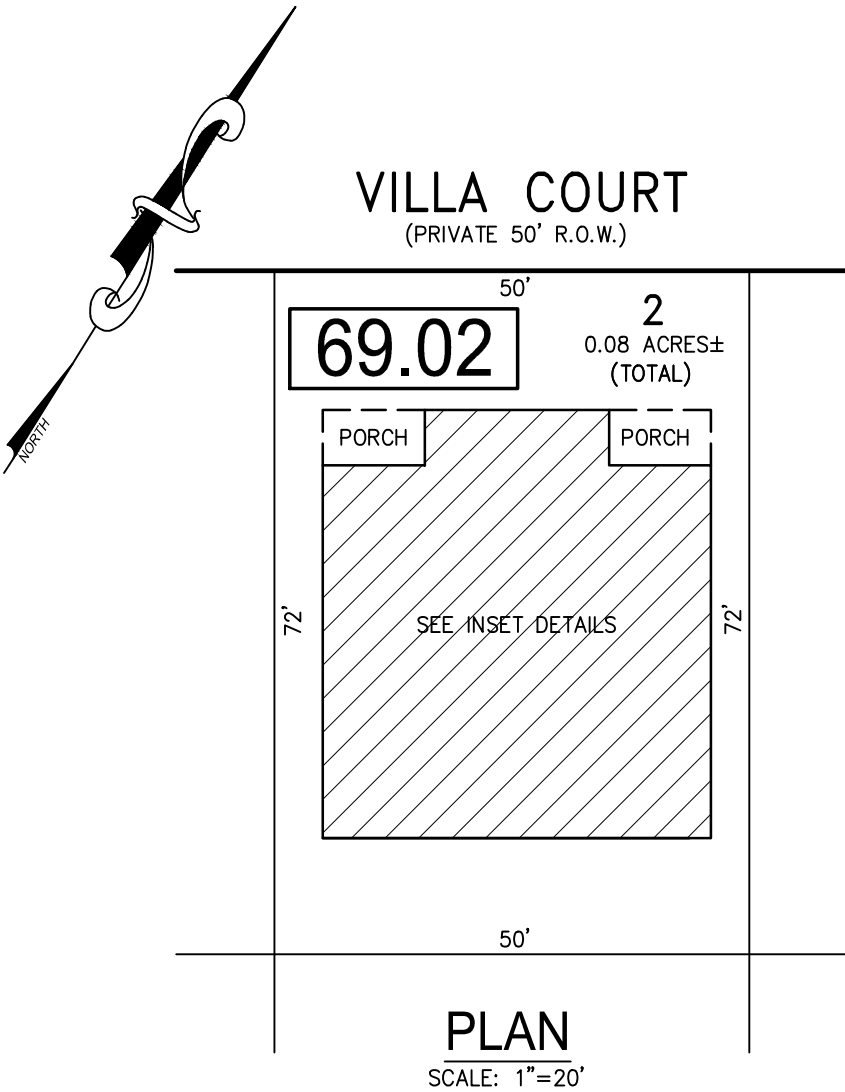


REVISIONS		
DATE	NAME	NO.

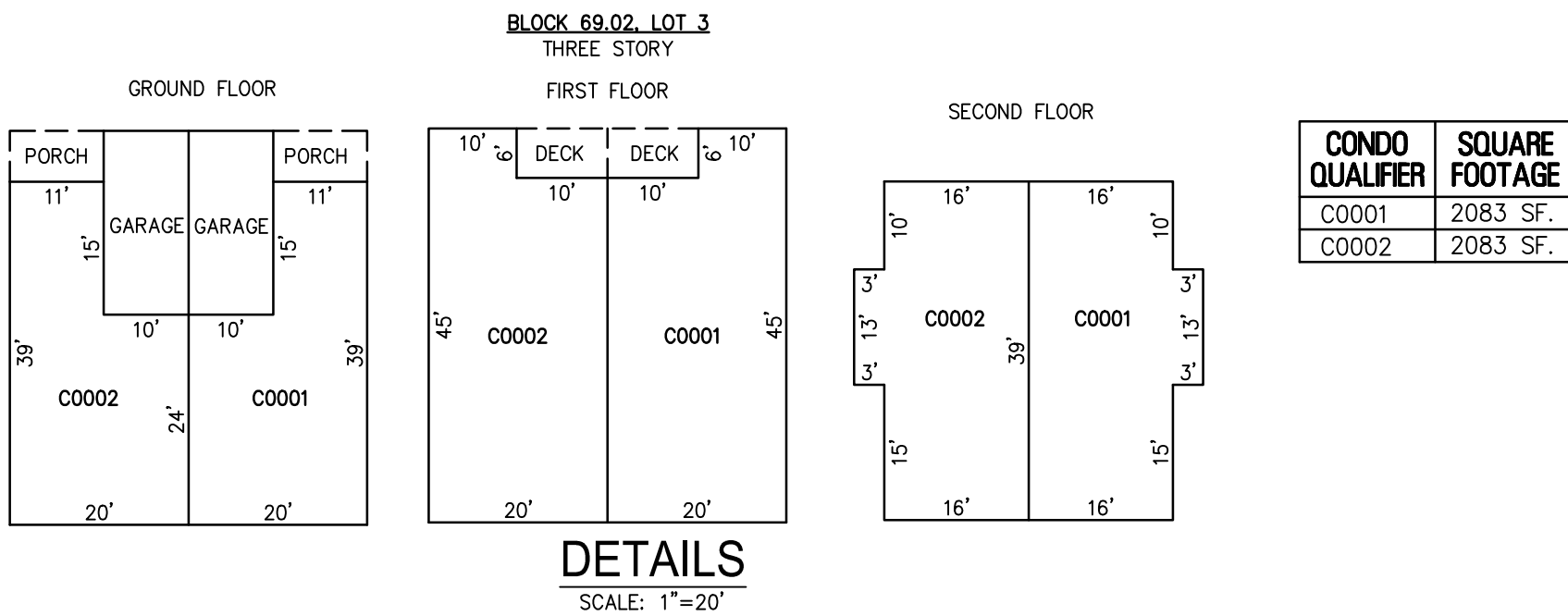
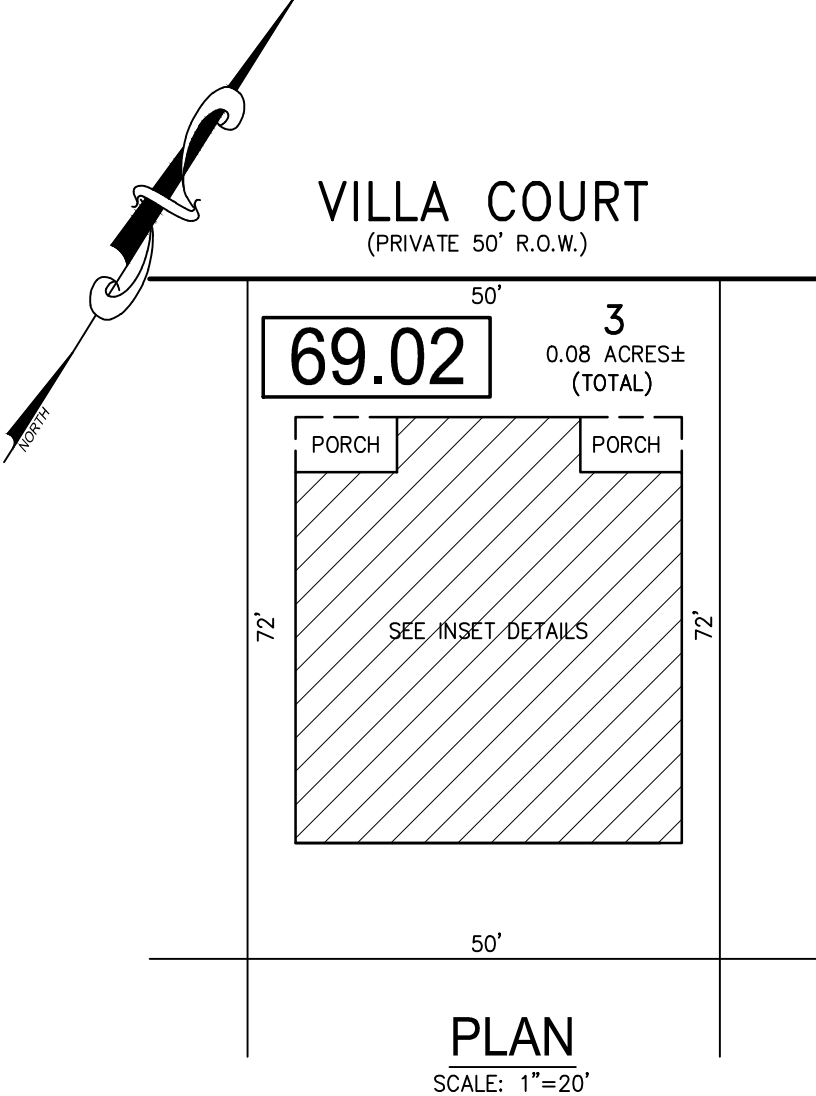
NOTE:
THIS SHEET HAS BEEN DRAWN USING COMPUTER AIDED DRAFTING/DESIGN (CADD) AND COORDINATE GEOMETRY (COGO).



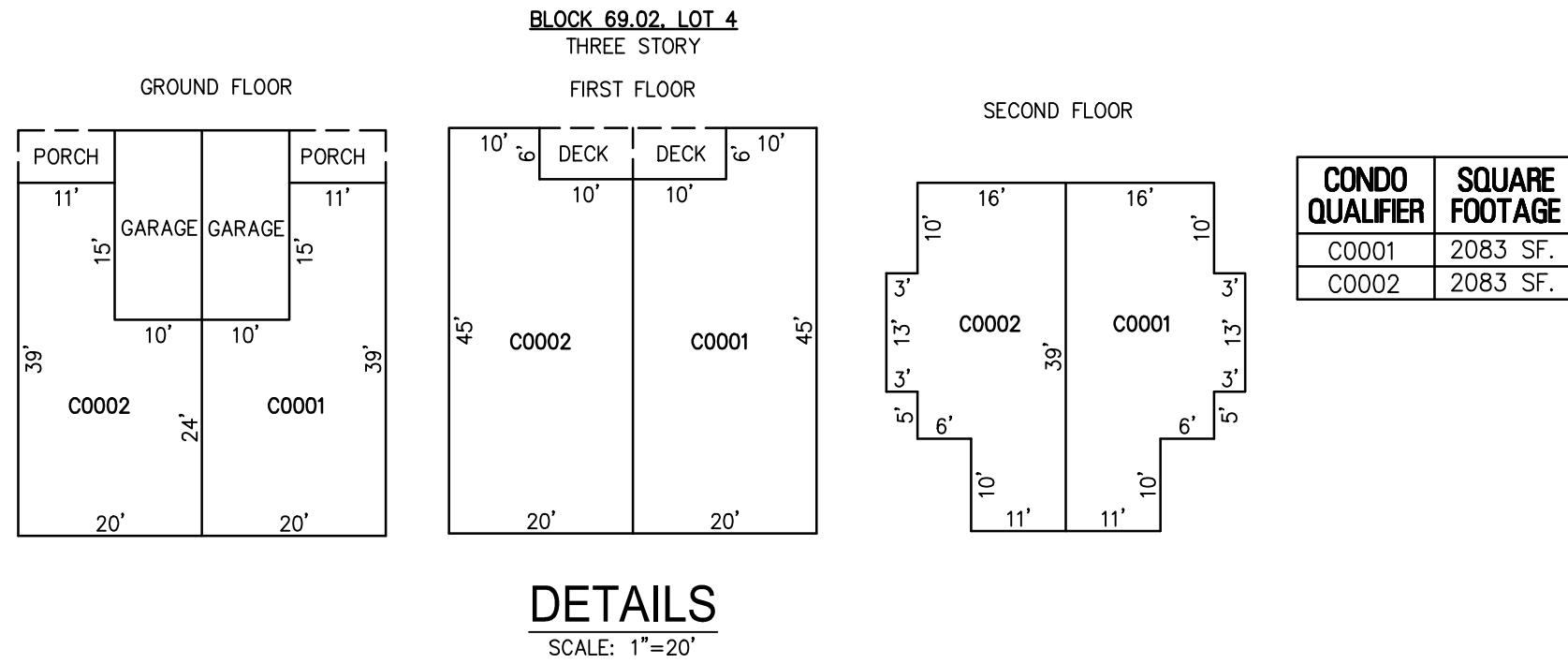
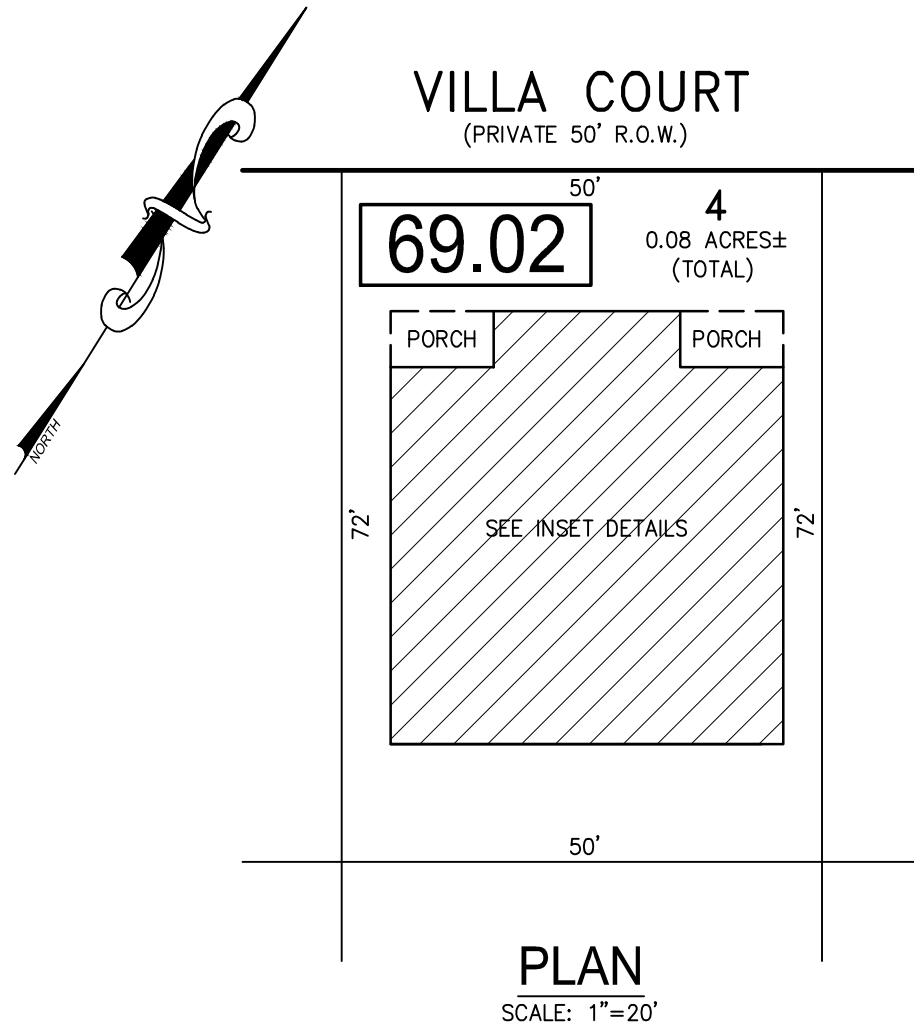
BLOCK 69.02, LOT 1
OCEAN VILLA 6302-6304 VILLA COURT CONDOMINIUM



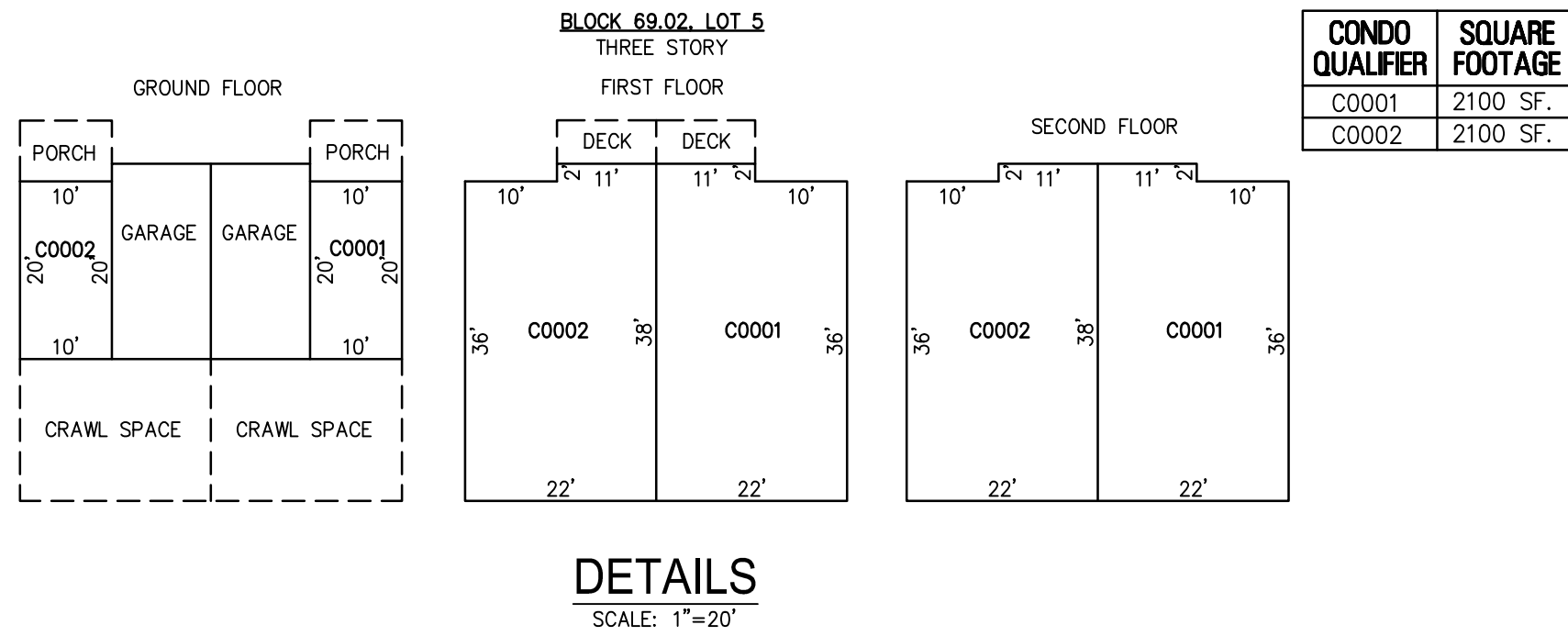
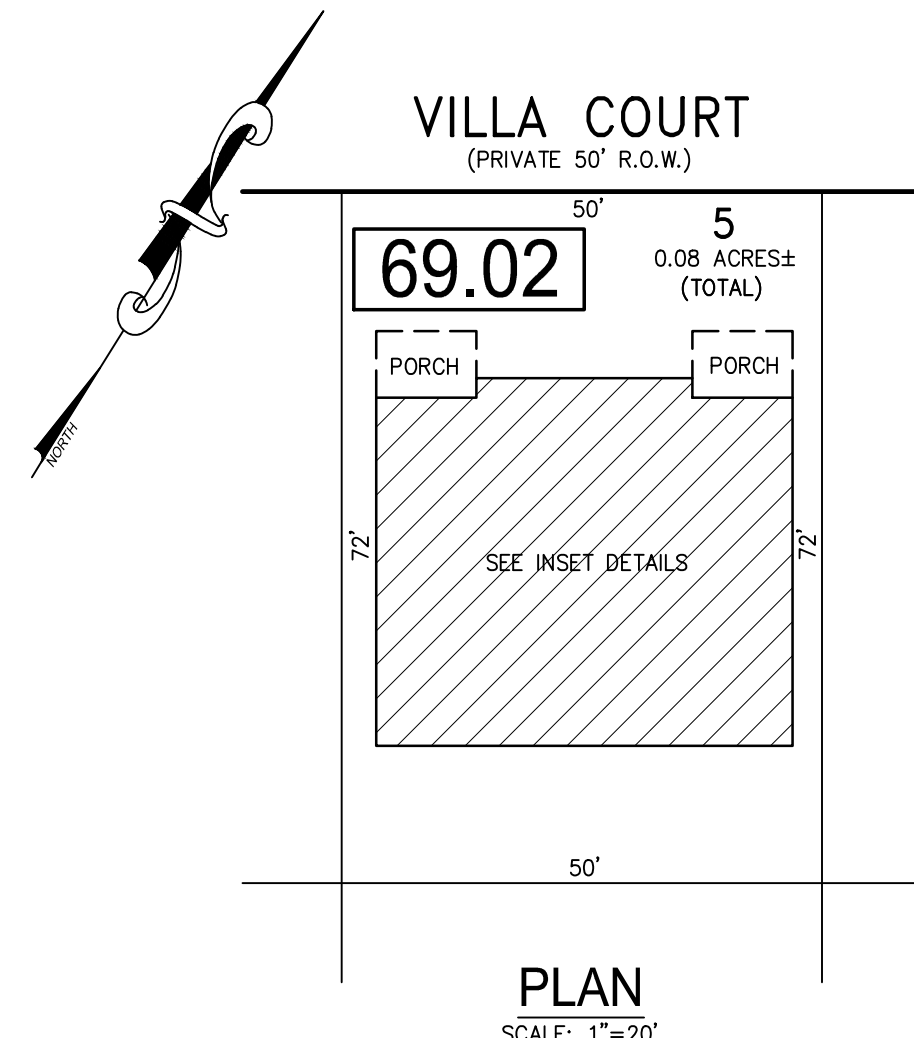
BLOCK 69.02, LOT 2
OCEAN VILLA 6306-6308 VILLA COURT CONDOMINIUM



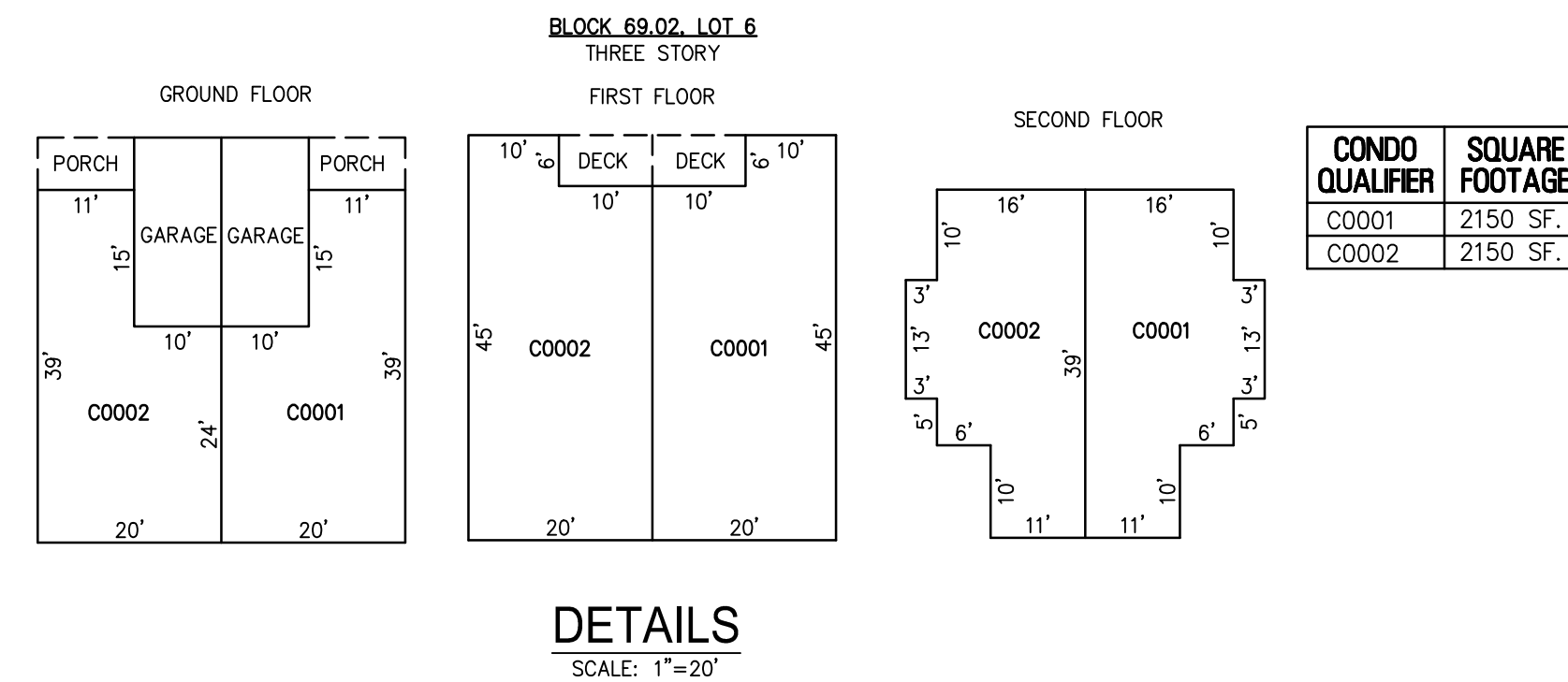
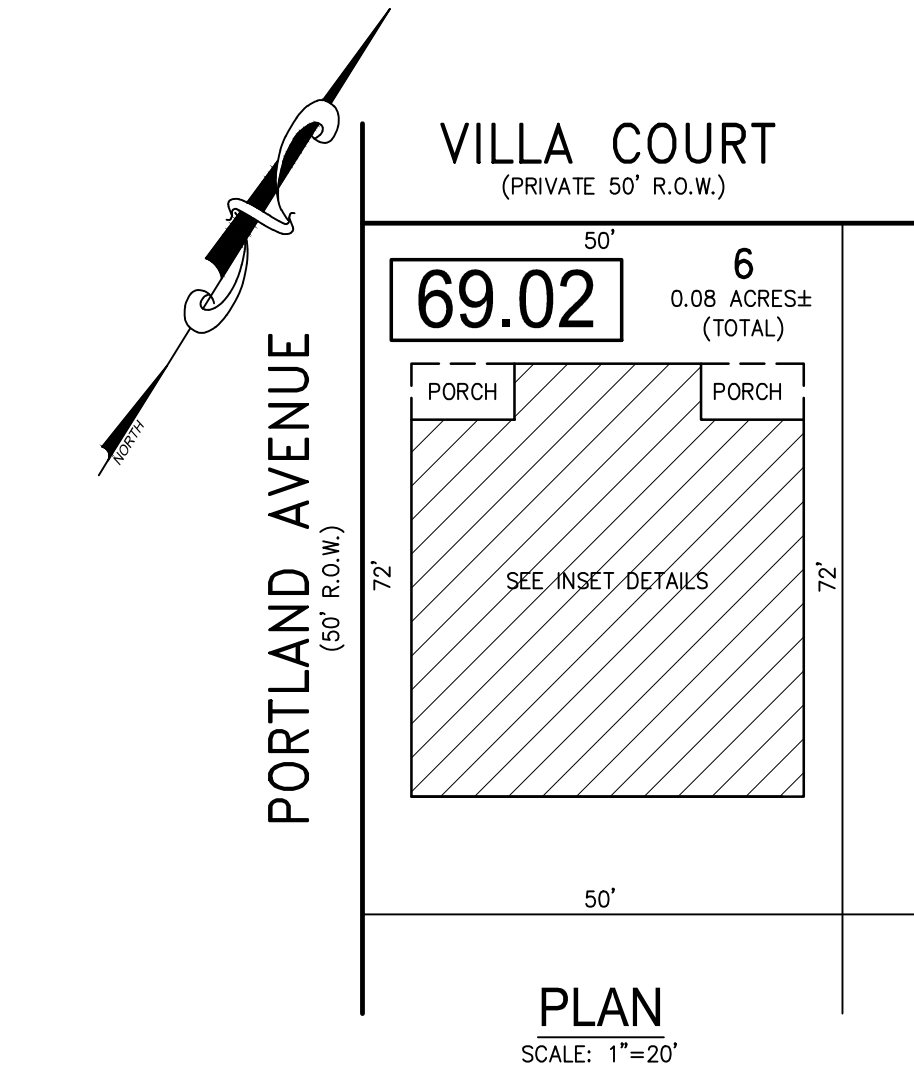
BLOCK 69.02, LOT 3
OCEAN VILLA 6310-6312 VILLA COURT CONDOMINIUM



BLOCK 69.02, LOT 4
OCEAN VILLA 6314-6316 VILLA COURT CONDOMINIUM



BLOCK 69.02, LOT 5
OCEAN VILLA 6318-6320 VILLA COURT CONDOMINIUM



BLOCK 69.02, LOT 6
OCEAN VILLA 6322-6324 VILLA COURT CONDOMINIUM

BLOCK 69.02, LOT 1
BLOCK 69.02, LOT 2
BLOCK 69.02, LOT 3
BLOCK 69.02, LOT 4
BLOCK 69.02, LOT 5
BLOCK 69.02, LOT 6
SEE SHEET 13

"THIS TAX MAP SHEET HAS BEEN DIGITALLY REVISED USING COMPUTER-AIDED DRAFTING/DESIGN (CADD) & COORDINATE GEOMETRY (COGO). IT IS BASED ON THE ORIGINAL DIGITALLY DRAWN TAX MAP PLATE BEARING THE OFFICIAL NEW JERSEY DIVISION TAXATION APPROVAL STAMP WITH APPROVAL DATE JULY, 20, 2016. SERIAL NUMBER 1070 AND SIGNATURE OF JUDY P. MILLER, CTA, CHIEF PROPERTY ADMINISTRATION AND SHELLY REILLY, CTA, PRINCIPAL FIELD REPRESENTATIVE. THE ORIGINAL DIGITALLY DRAWN TAX MAP PLATE WITH THE OFFICIAL APPROVAL STAMP IS ON FILE WITH REMINGTON & VERNICK ENGINEERS."

TAX MAP

CITY OF VENTNOR

ATLANTIC COUNTY NEW JERSEY

SCALE: NOTED DATE: 2-19-2015

CHARLES E. ADAMSON NJ PROFESSIONAL LAND SURVEYOR LIC. NO. 42627

RV & W

REMINGTON, VERNICK & WALBERG ENGINEERS

845 N. MAIN STREET, PLEASANTVILLE, N.J. 08232

(609) 645-7100, FAX (609) 645-7076

WEB SITE ADDRESS: WWW.RVW.COM

TO SHOW CONDITIONS AS OF 2-03-2023

13.02