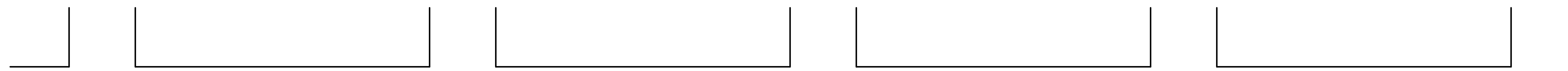


REVISIONS		
DATE	NAME	NO.
2-23-2018	CHARLES E. ADAMSON	42627

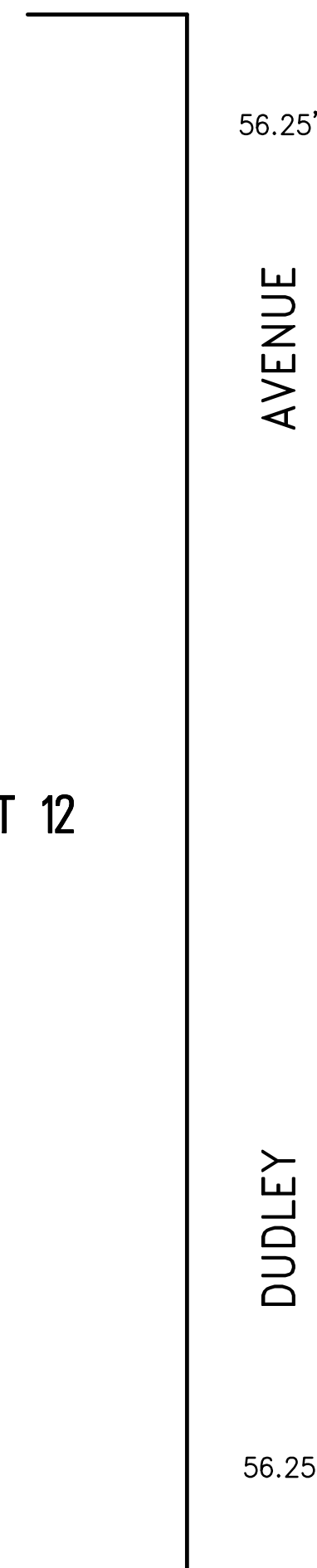
**NOTE:**  
THIS SHEET HAS BEEN DRAWN USING COMPUTER AIDED DRAFTING/DESIGN (CADD) AND COORDINATE GEOMETRY (COGO).

SHEET 19



80' VENTNOR AVENUE

80' AVENUE

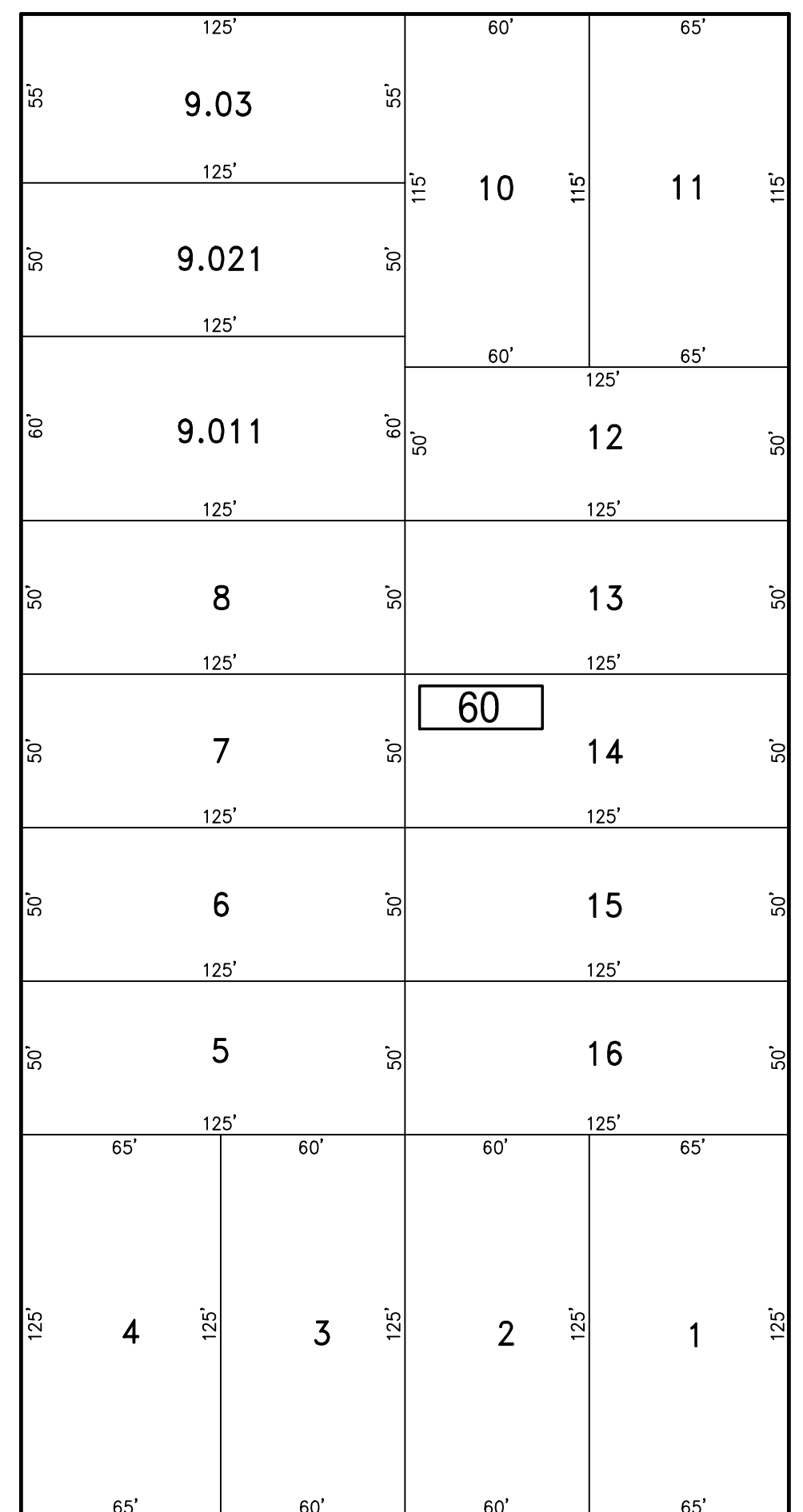


56.25' AVENUE

DUDLEY AVENUE

56.25'

SHEET 12

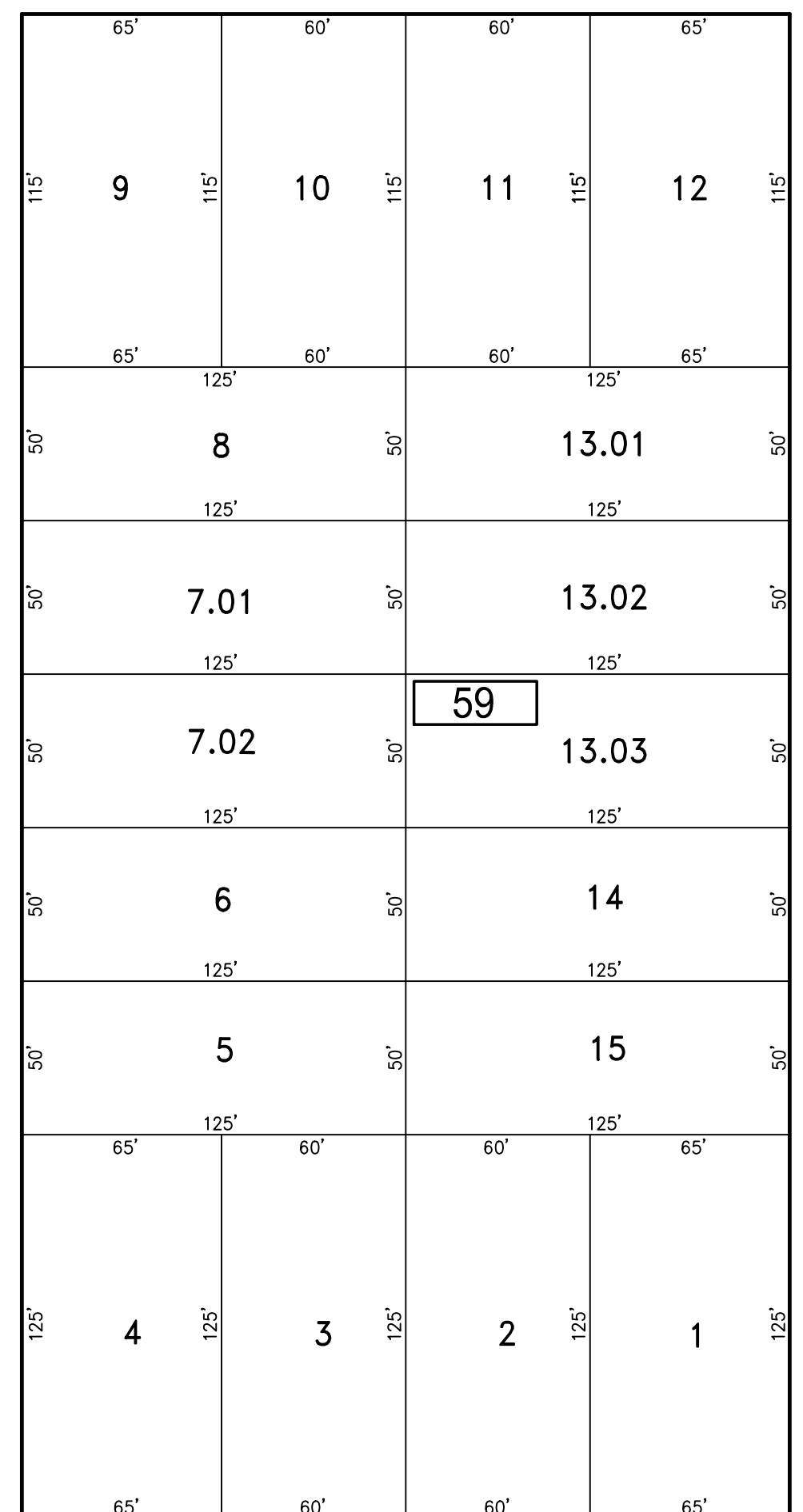


56.25' AVENUE

OXFORD AVENUE

56.25'

SHEET 10

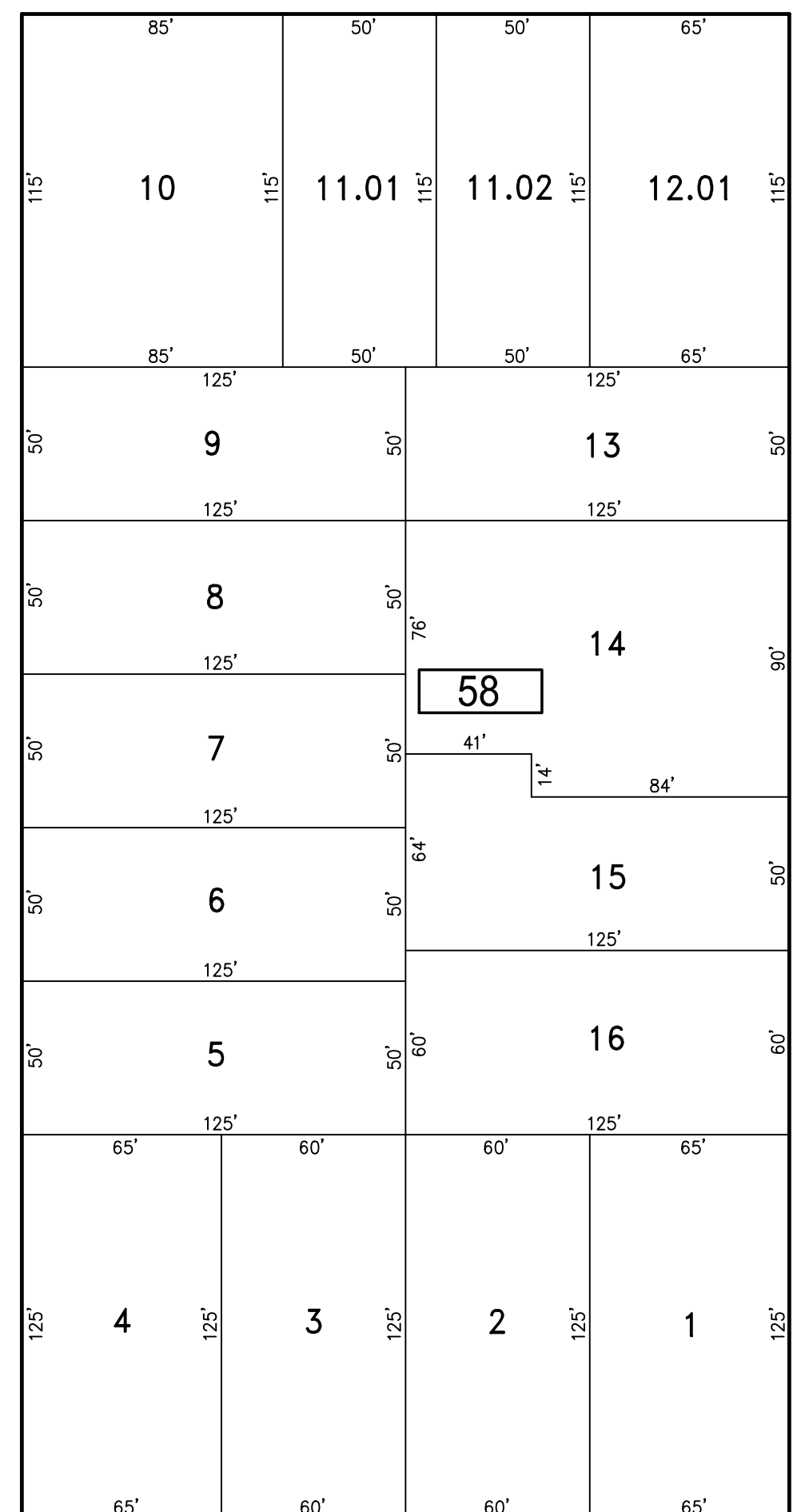


56.25' AVENUE

SOMERSET AVENUE

56.25'

SHEET 3

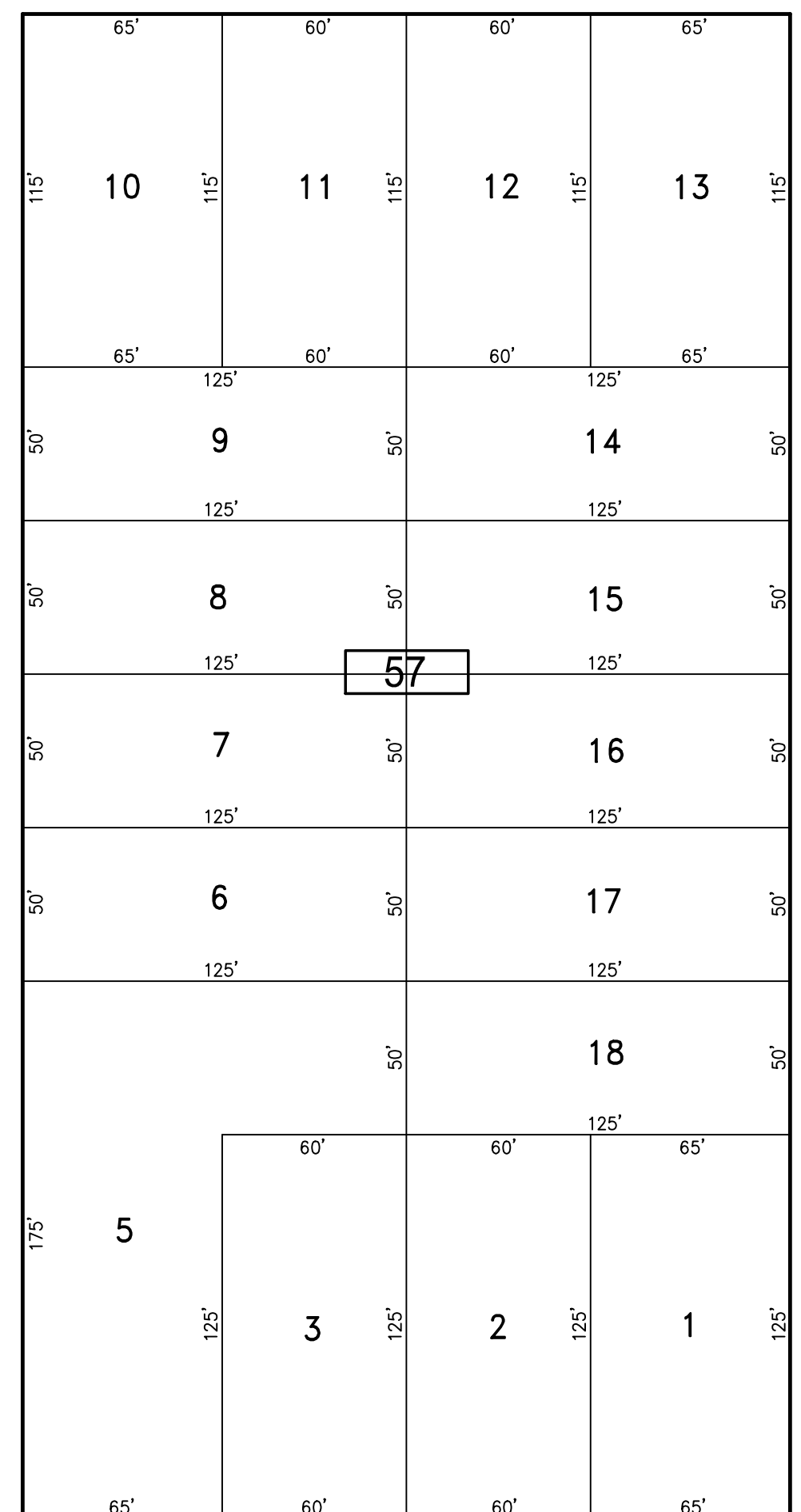


56.25' AVENUE

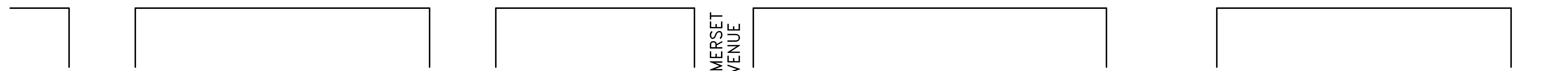
SUFFOLK AVENUE

56.25'

SHEET 10



100' ATLANTIC AVENUE



SOMERSET AVENUE

"THIS TAX MAP SHEET HAS BEEN DIGITALLY REVISED USING COMPUTER-AIDED DRAFTING/DESIGN (CADD) & COORDINATE GEOMETRY (COGO). IT IS BASED ON THE ORIGINAL DIGITALLY DRAWN TAX MAP PLATE BEARING THE OFFICIAL NEW JERSEY DIVISION TAXATION APPROVAL STAMP WITH APPROVAL DATE JULY, 20, 2016. SERIAL NUMBER 1070 AND SIGNATURE OF JUDY P. MILLER, CTA, CHIEF PROPERTY ADMINISTRATION AND SHELLY REILLY, CTA, PRINCIPAL FIELD REPRESENTATIVE. THE ORIGINAL DIGITALLY DRAWN TAX MAP PLATE WITH THE OFFICIAL APPROVAL STAMP IS ON FILE WITH REMINGTON & VERNICK ENGINEERS."

**TAX MAP**  
**CITY OF VENTNOR**

ATLANTIC COUNTY NEW JERSEY  
SCALE: 1" = 50' DATE: 2-19-2015

**CHARLES E. ADAMSON** NJ PROFESSIONAL LAND SURVEYOR LIC. NO. 42627

**RV & W** REMINGTON, VERNICK & WALBERG ENGINEERS  
845 N. MAIN STREET, PLEASANTVILLE, NJ 08232  
(609) 645-7100, FAX (609) 645-7076  
WEB SITE ADDRESS: WWW.RVW.COM

TO SHOW CONDITIONS AS OF 2-03-2023