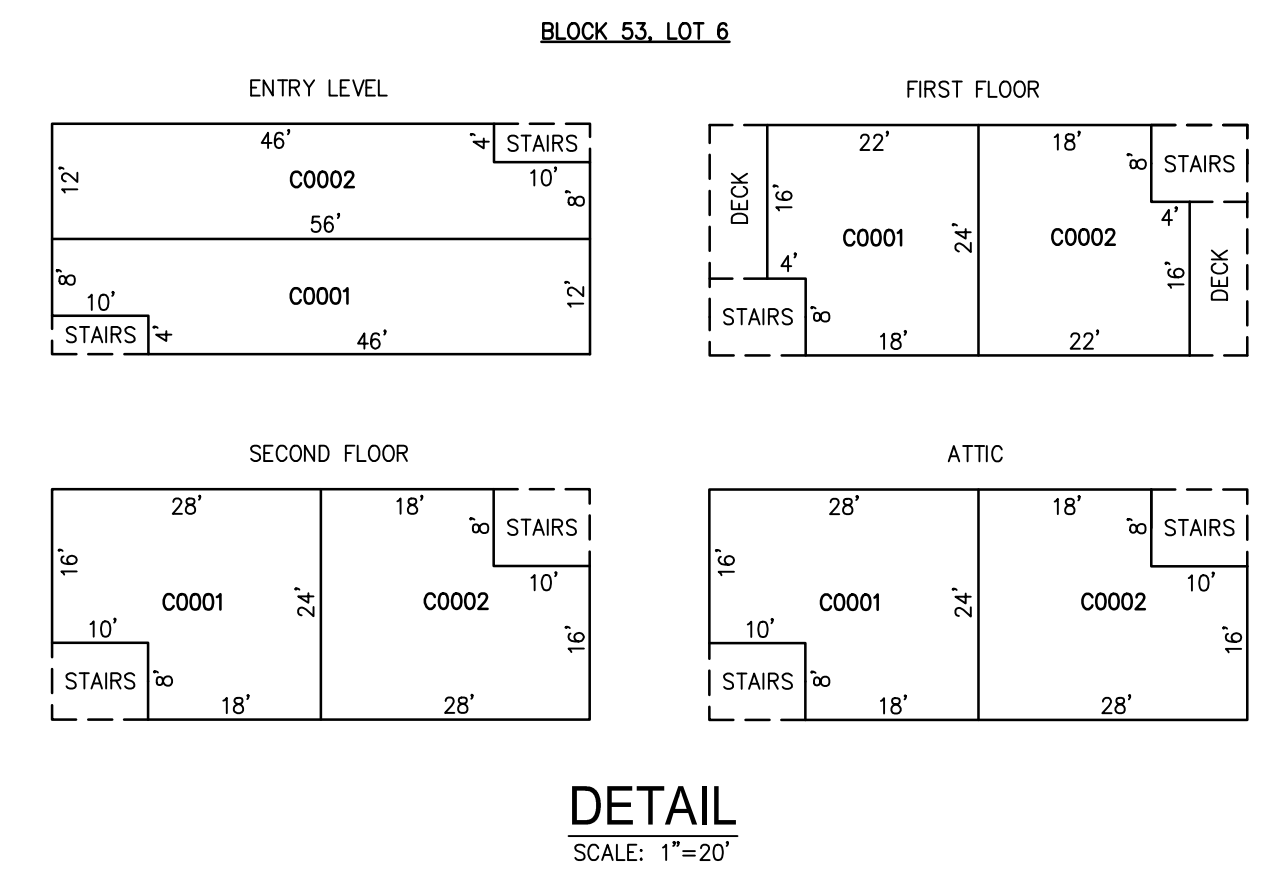
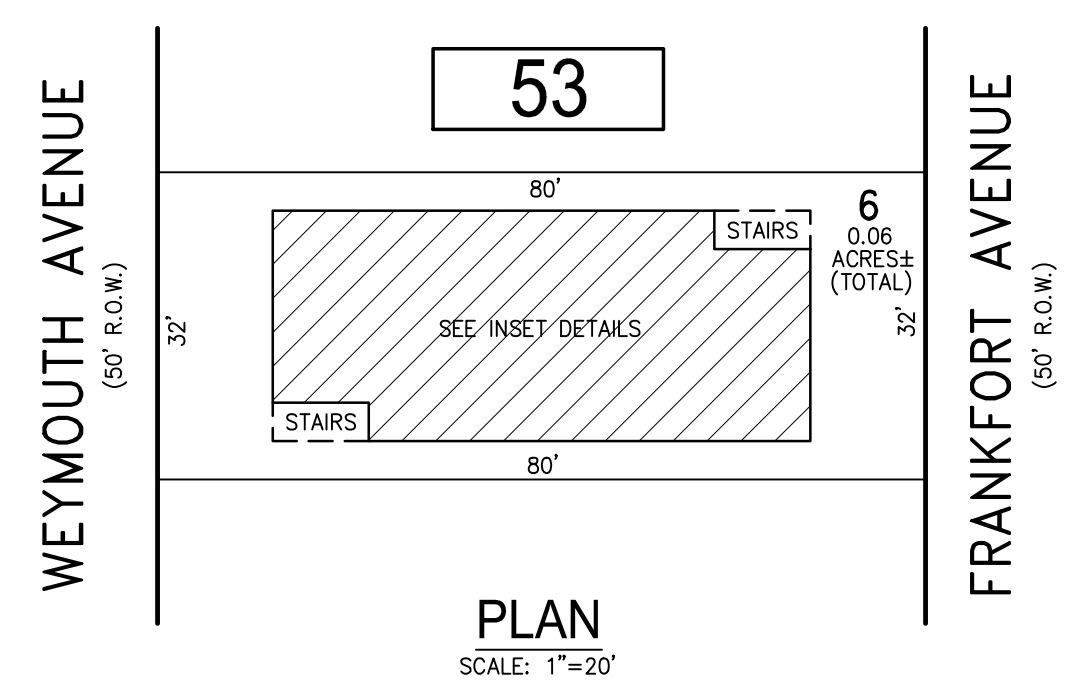
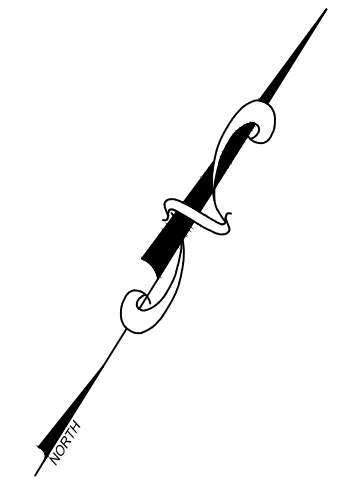


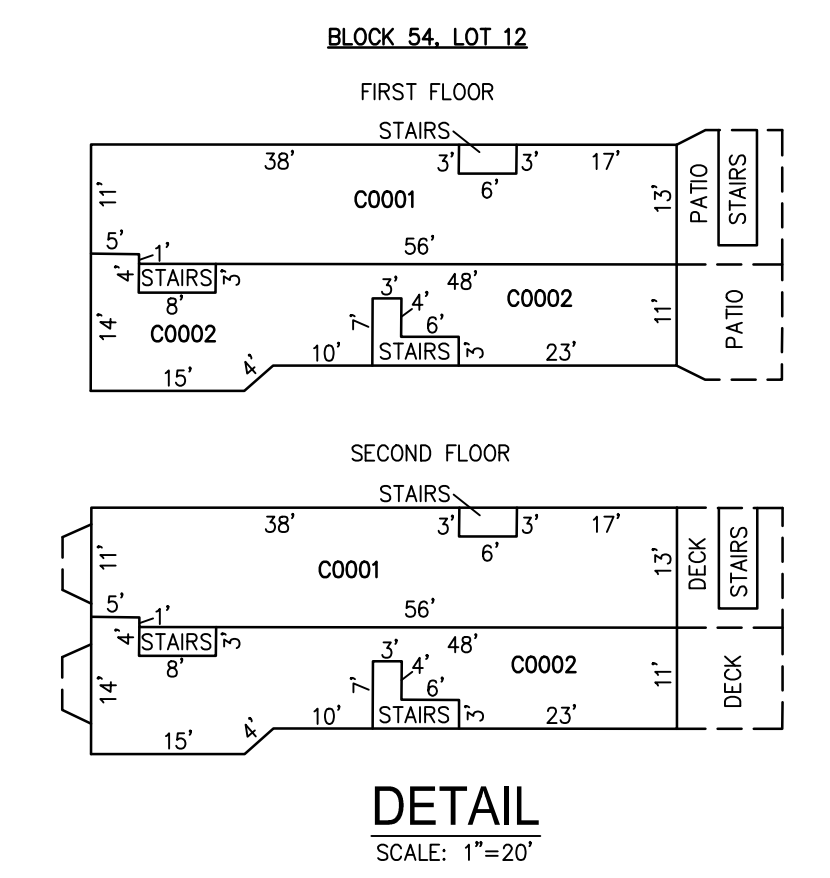
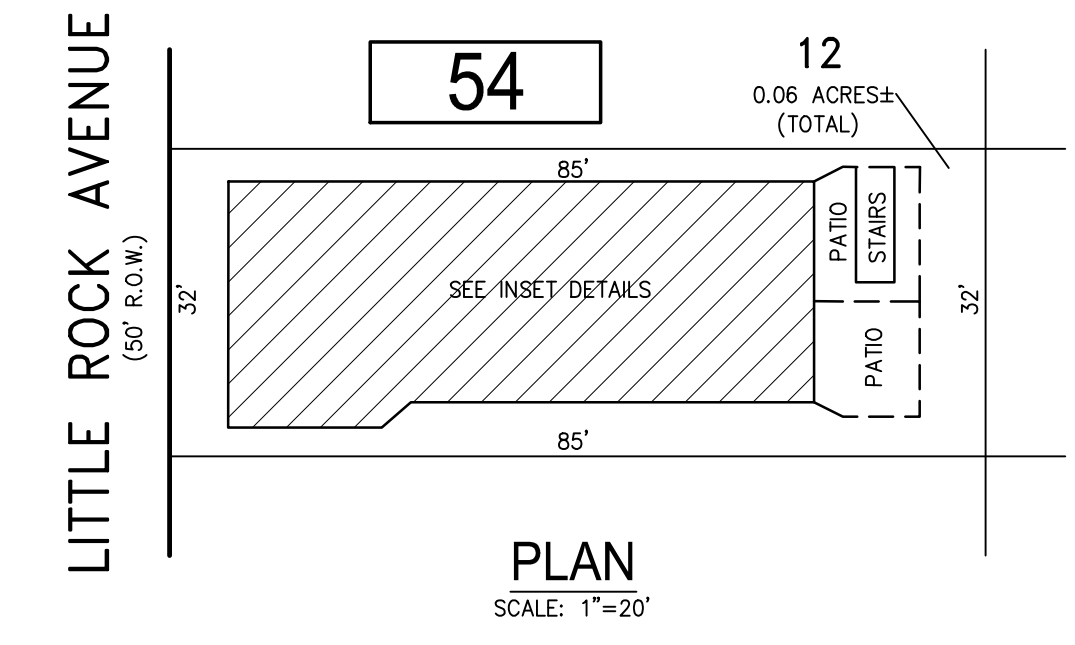
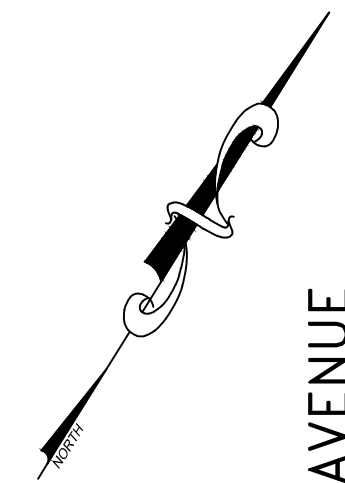
REVISIONS		
DATE	NAME	NO.
3-1-2022	CHARLES E. ADAMSON	42627

**NOTE:**  
THIS SHEET HAS BEEN DRAWN USING COMPUTER AIDED DRAFTING/DESIGN (CAD/D) AND COORDINATE GEOMETRY (COGO).



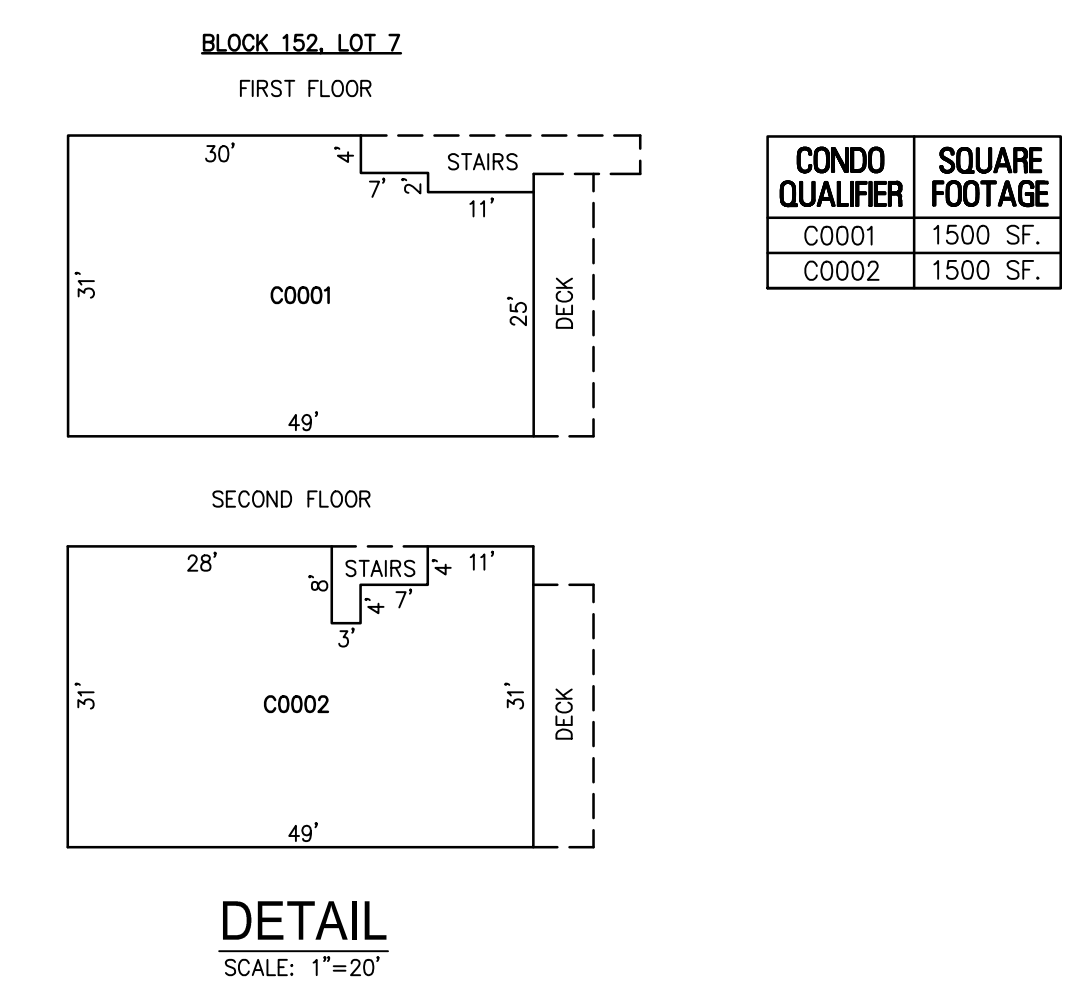
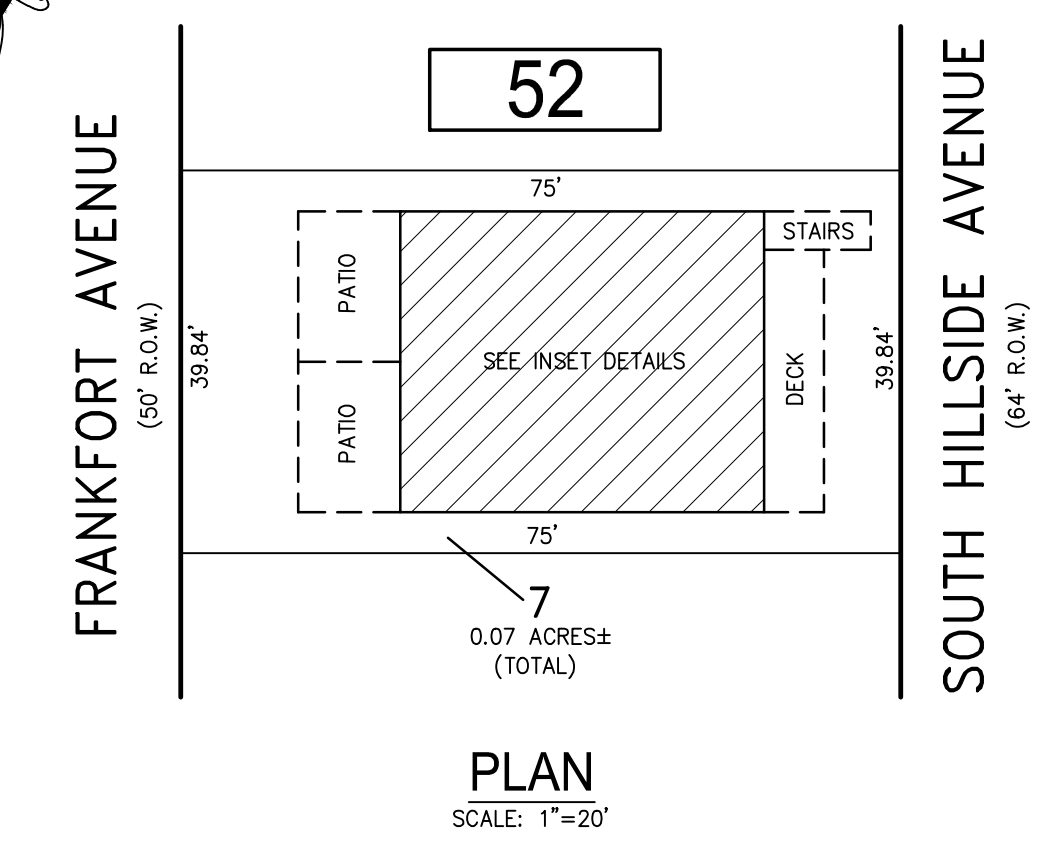
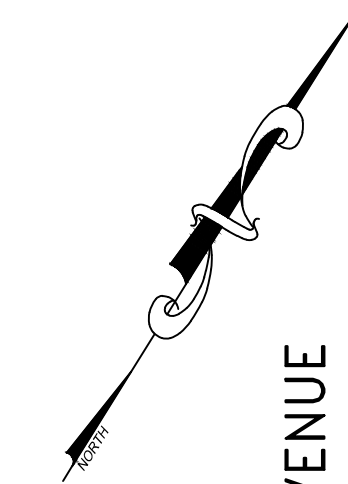
CONDO QUALIFIER	SQUARE FOOTAGE
C0001	2312 SF.
C0002	2312 SF.

**BLOCK 53, LOT 6**  
**21 SOUTH WEYMOUTH AVENUE CONDOMINIUM**



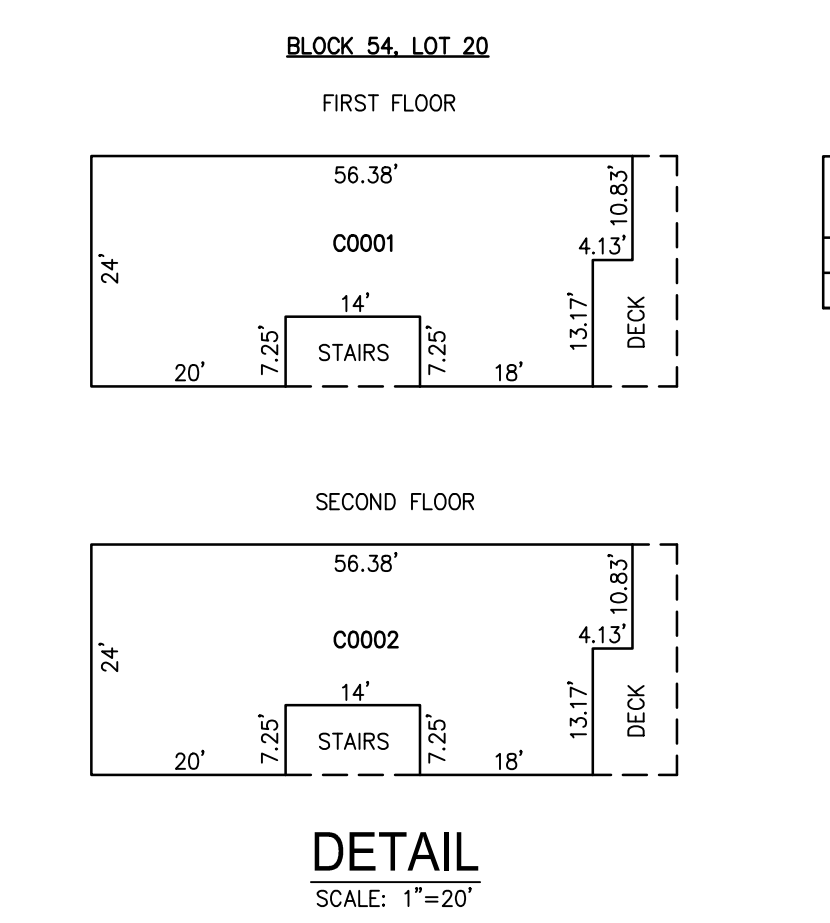
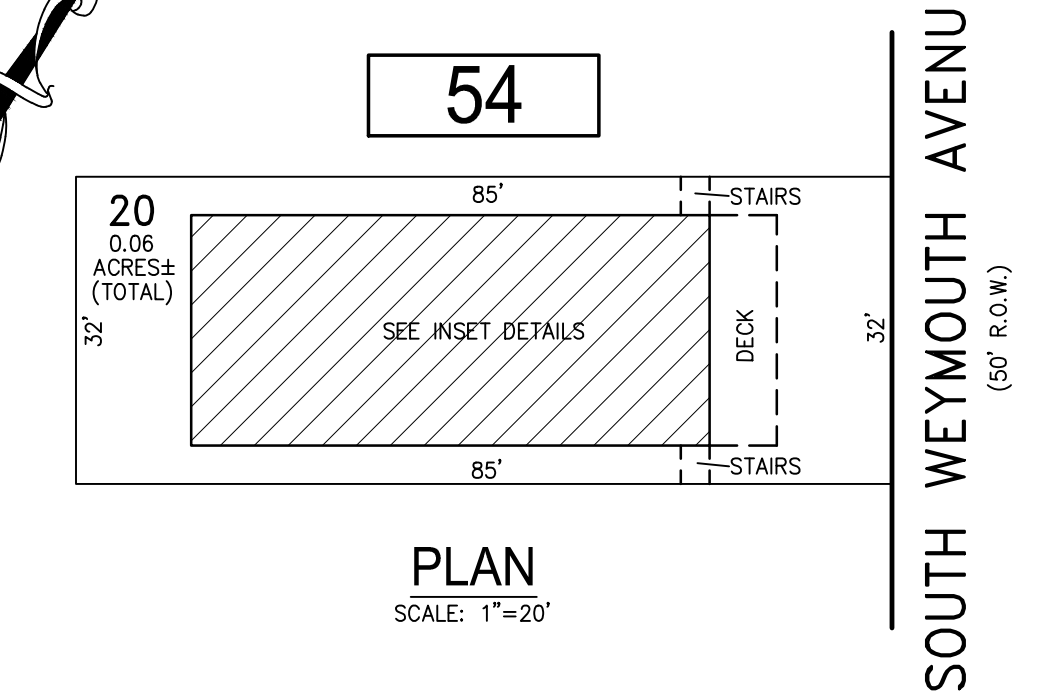
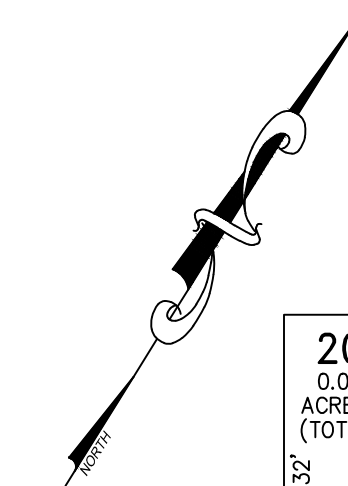
CONDO QUALIFIER	SQUARE FOOTAGE
C0001	2354 SF.
C0002	2036 SF.

**BLOCK 54, LOT 12**  
**SOUTH LITTLE ROCK AVENUE CONDOMINIUM**  
**17 LITTLE ROCK AVENUE**



CONDO QUALIFIER	SQUARE FOOTAGE
C0001	1500 SF.
C0002	1500 SF.

**BLOCK 52, LOT 7**  
**14 SOUTH HILLSIDE AVENUE CONDOMINIUM**



CONDO QUALIFIER	SQUARE FOOTAGE
C0001	1298 SF.
C0002	1298 SF.

**BLOCK 54, LOT 20**  
**16 SOUTH WEYMOUTH AVENUE CONDOMINIUM**

"THIS TAX MAP SHEET HAS BEEN DIGITALLY REVISED USING COMPUTER-AIDED DRAFTING/DESIGN (CADD) & COORDINATE GEOMETRY (COGO). IT IS BASED ON THE ORIGINAL DIGITALLY DRAWN TAX MAP PLATE BEARING THE OFFICIAL NEW JERSEY DIVISION TAXATION APPROVAL STAMP WITH APPROVAL DATE JULY, 20, 2016. SERIAL NUMBER 1070 AND SIGNATURE OF JUDY P. MILLER, CTA, CHIEF PROPERTY ADMINISTRATION AND SHELLY REILLY, CTA, PRINCIPAL FIELD REPRESENTATIVE. THE ORIGINAL DIGITALLY DRAWN TAX MAP PLATE WITH THE OFFICIAL APPROVAL STAMP IS ON FILE WITH REMINGTON & VERNICK ENGINEERS."

BLOCK 52, LOT 7  
BLOCK 53, LOT 6  
BLOCK 54, LOT 12  
BLOCK 54, LOT 20  
SEE SHEET 10

**TAX MAP**  
**CITY OF VENTNOR**  
ATLANTIC COUNTY NEW JERSEY  
SCALE: NOTED DATE: 2-19-2015

**CHARLES E. ADAMSON** NJ PROFESSIONAL LAND SURVEYOR LIC. NO. 42627  
24 GA 28048700

**RV & W**  
**REMINGTON, VERNICK & WALBERG ENGINEERS**  
845 N. MAIN STREET, PLEASANTVILLE, NJ 08232  
(609) 645-7070, FAX (609) 645-7076  
WEB SITE ADDRESS: WWW.RVE.COM  
TO SHOW CONDITIONS AS OF 2-03-2023