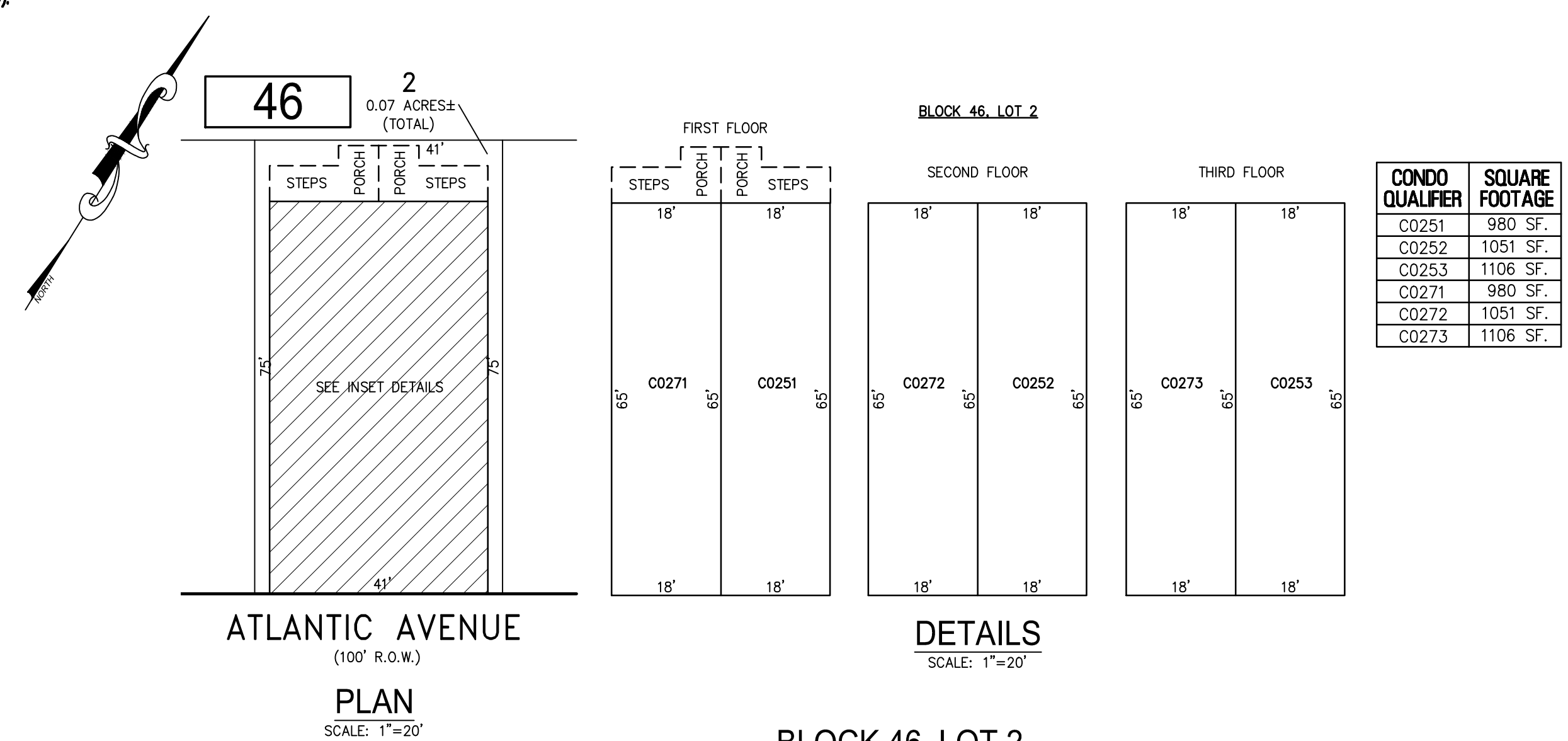


REVISIONS		
DATE	NAME	NO.

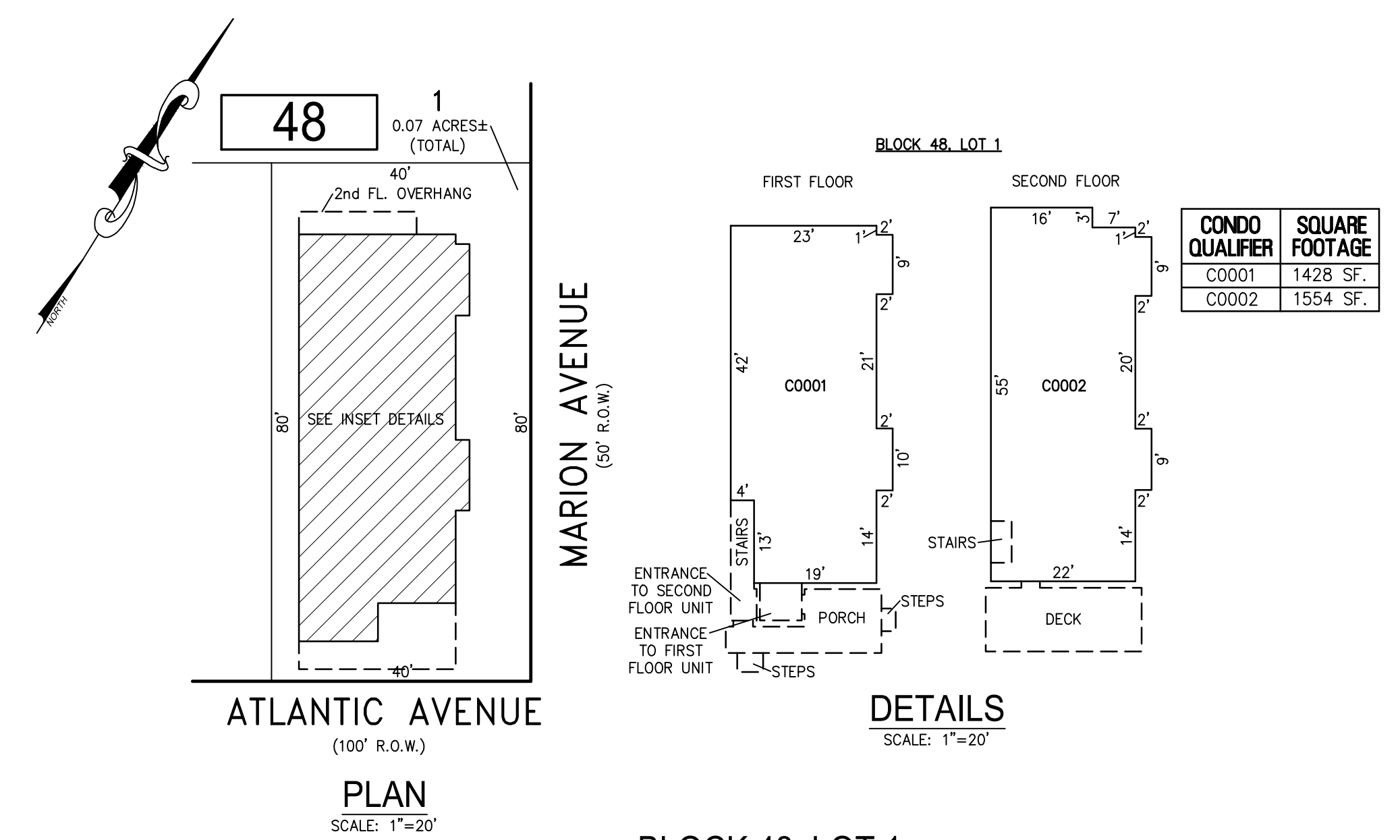
NOTE:
THIS SHEET HAS BEEN DRAWN USING COMPUTER AIDED DRAFTING/DESIGN (CAD/D) AND COORDINATE GEOMETRY (COGO).



46
0.07 ACRES± (TOTAL)
ATLANTIC AVENUE (100' R.O.W.)
PLAN
SCALE: 1"=20'

DETAILS
SCALE: 1"=20'

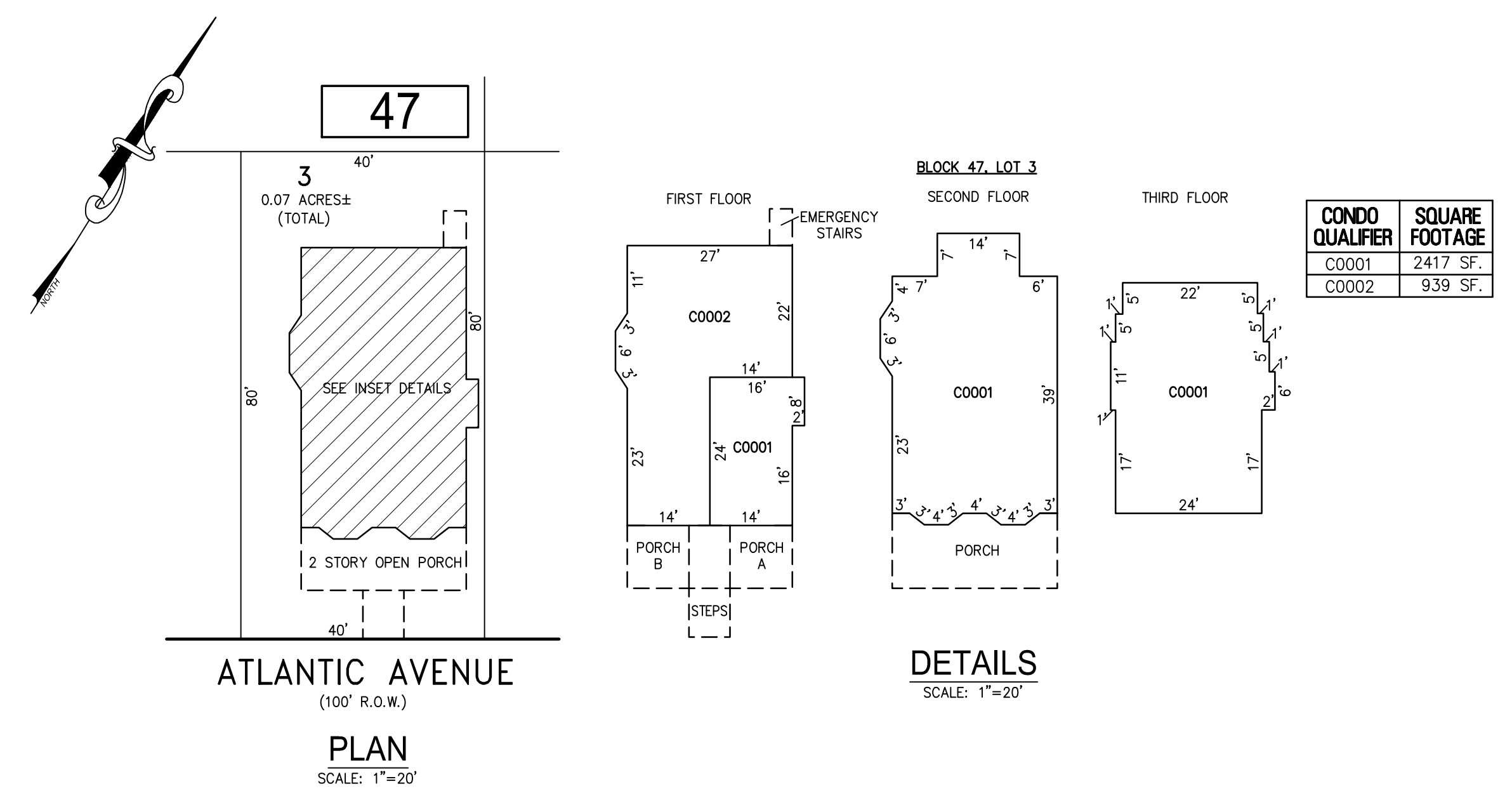
BLOCK 46, LOT 2
4825-4827 ATLANTIC AVENUE CONDOMINIUM



48
0.07 ACRES± (TOTAL)
ATLANTIC AVENUE (100' R.O.W.)
PLAN
SCALE: 1"=20'

DETAILS
SCALE: 1"=20'

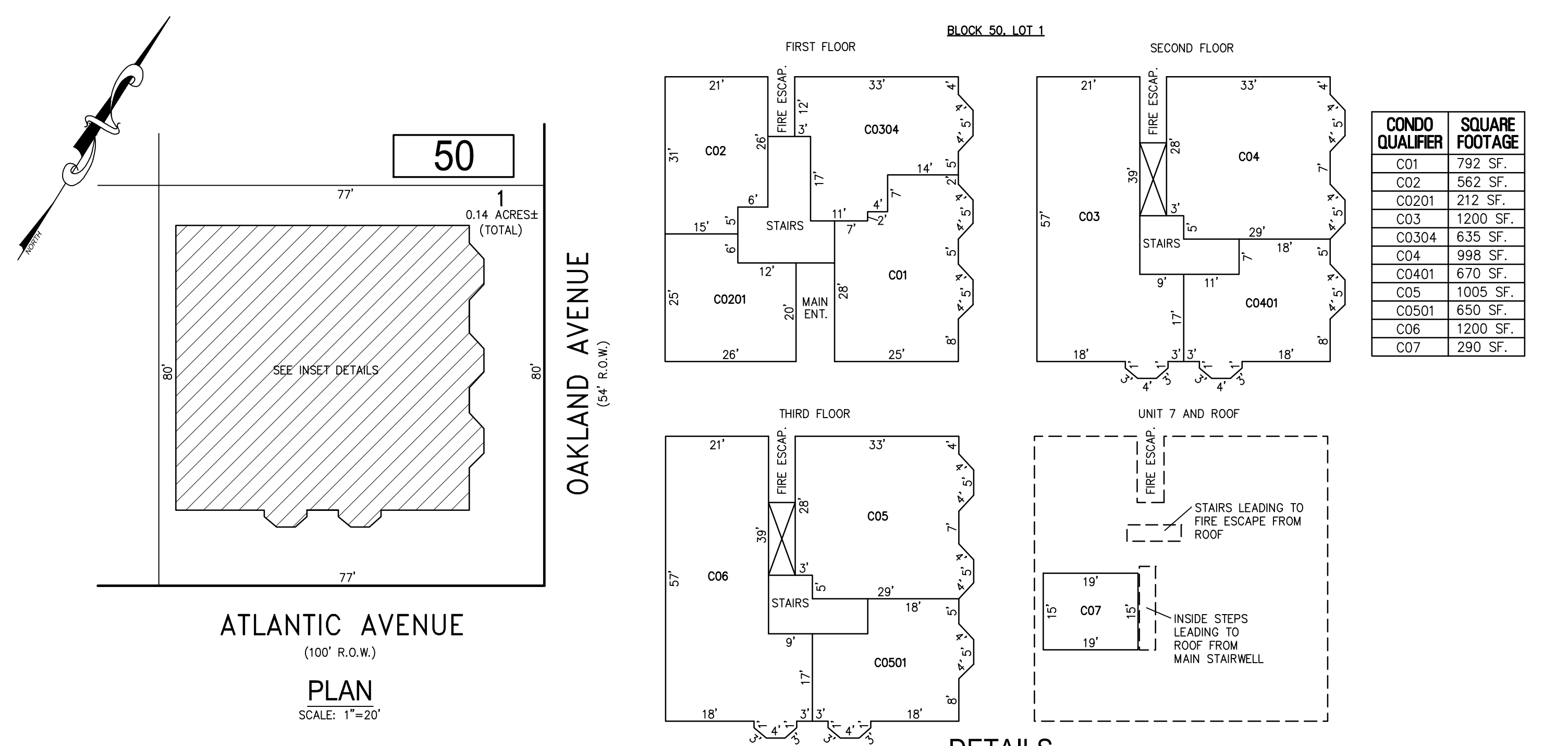
BLOCK 48, LOT 1
4909 ATLANTIC AVENUE CONDOMINIUM



47
0.07 ACRES± (TOTAL)
ATLANTIC AVENUE (100' R.O.W.)
PLAN
SCALE: 1"=20'

DETAILS
SCALE: 1"=20'

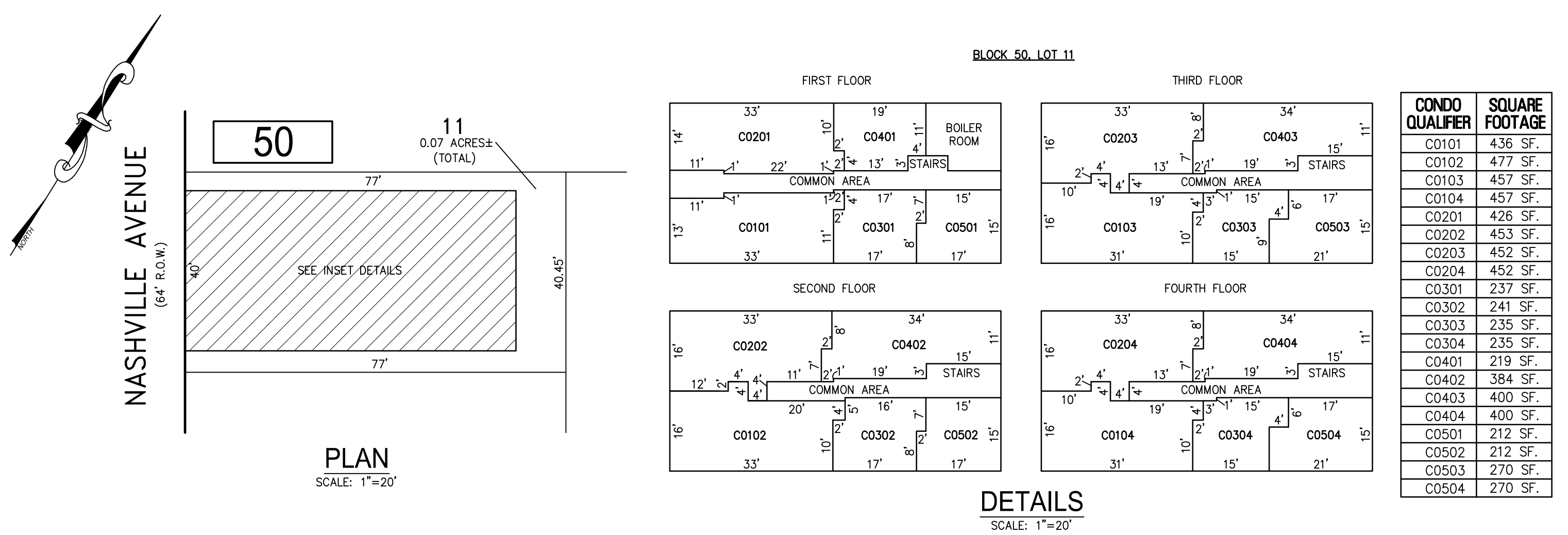
BLOCK 47, LOT 3
4905 ATLANTIC AVENUE CONDOMINIUM



50
0.14 ACRES± (TOTAL)
ATLANTIC AVENUE (100' R.O.W.)
PLAN
SCALE: 1"=20'

DETAILS
SCALE: 1"=20'

BLOCK 50, LOT 1
OAKLAND BEACH CONDOMINIUM
5003 ATLANTIC AVENUE



50
0.07 ACRES± (TOTAL)
NASHVILLE AVENUE (64' R.O.W.)
PLAN
SCALE: 1"=20'

DETAILS
SCALE: 1"=20'

BLOCK 50, LOT 11
THE NASHVILLE CONDOMINIUM
11 S NASHVILLE AVENUE

BLOCK 46, LOT 2
BLOCK 47, LOT 3
BLOCK 48, LOT 1
BLOCK 50, LOT 1
BLOCK 50, LOT 11
SEE SHEET 9

"THIS TAX MAP SHEET HAS BEEN DIGITALLY REVISED USING COMPUTER-AIDED DRAFTING/DESIGN (CADD) & COORDINATE GEOMETRY (COGO). IT IS BASED ON THE ORIGINAL DIGITALLY DRAWN TAX MAP PLATE BEARING THE OFFICIAL NEW JERSEY DIVISION TAXATION APPROVAL STAMP WITH APPROVAL DATE JULY, 20, 2016. SERIAL NUMBER 1070 AND SIGNATURE OF JUDY P. MILLER, CTA, CHIEF PROPERTY ADMINISTRATION AND SHELLY REILLY, CTA, PRINCIPAL FIELD REPRESENTATIVE. THE ORIGINAL DIGITALLY DRAWN TAX MAP PLATE WITH THE OFFICIAL APPROVAL STAMP IS ON FILE WITH REMINGTON & VERNICK ENGINEERS."

TAX MAP
CITY OF VENTNOR
ATLANTIC COUNTY NEW JERSEY
SCALE: NOTED DATE: 2-19-2015

CHARLES E. ADAMSON NJ PROFESSIONAL LAND SURVEYOR LIC. NO. 42627
24 GA 28048700

RV & W **REMINGTON, VERNICK & WALBERG ENGINEERS**
845 N. MAIN STREET, PLEASANTVILLE, NJ 08232
(609) 645-700, FAX (609) 645-7076
WEB SITE ADDRESS: WWW.RVW.COM
TO SHOW CONDITIONS AS OF 2-03-2023