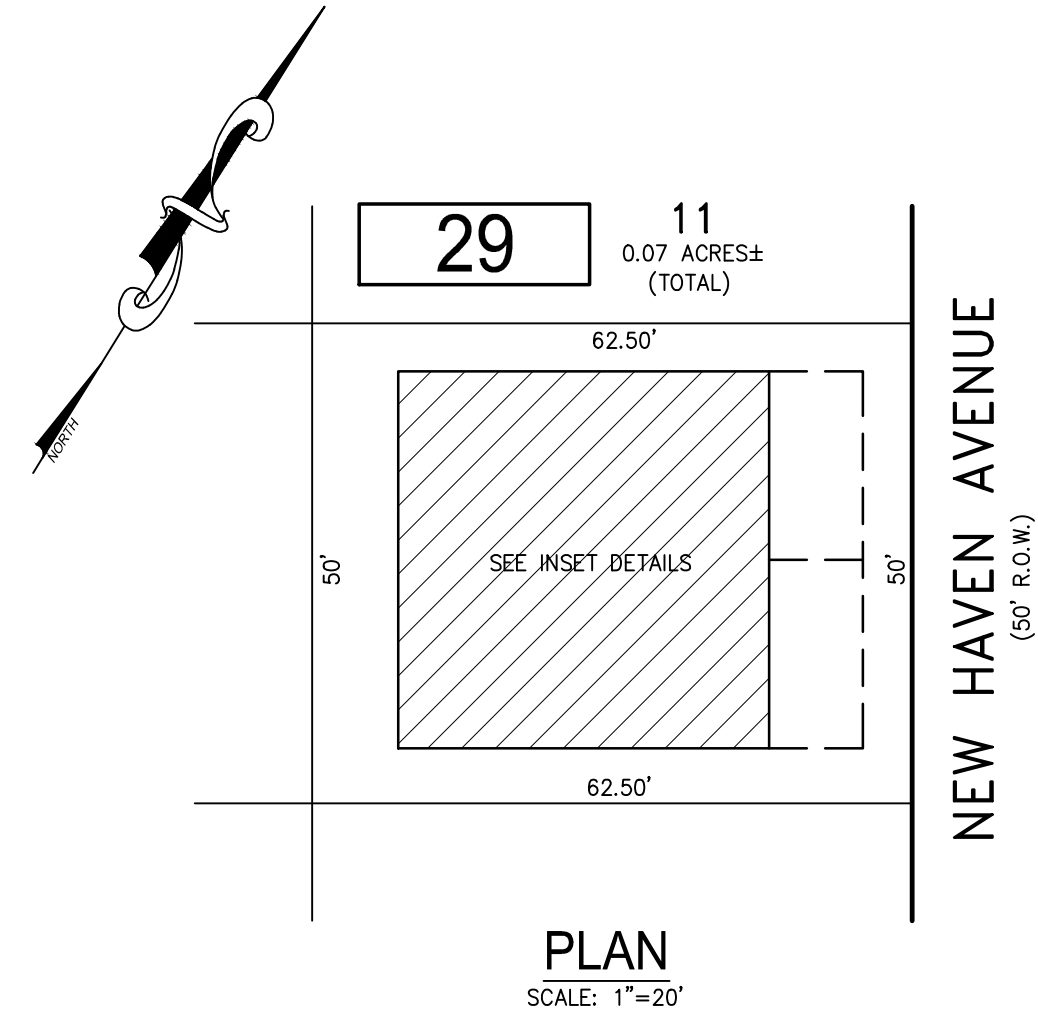


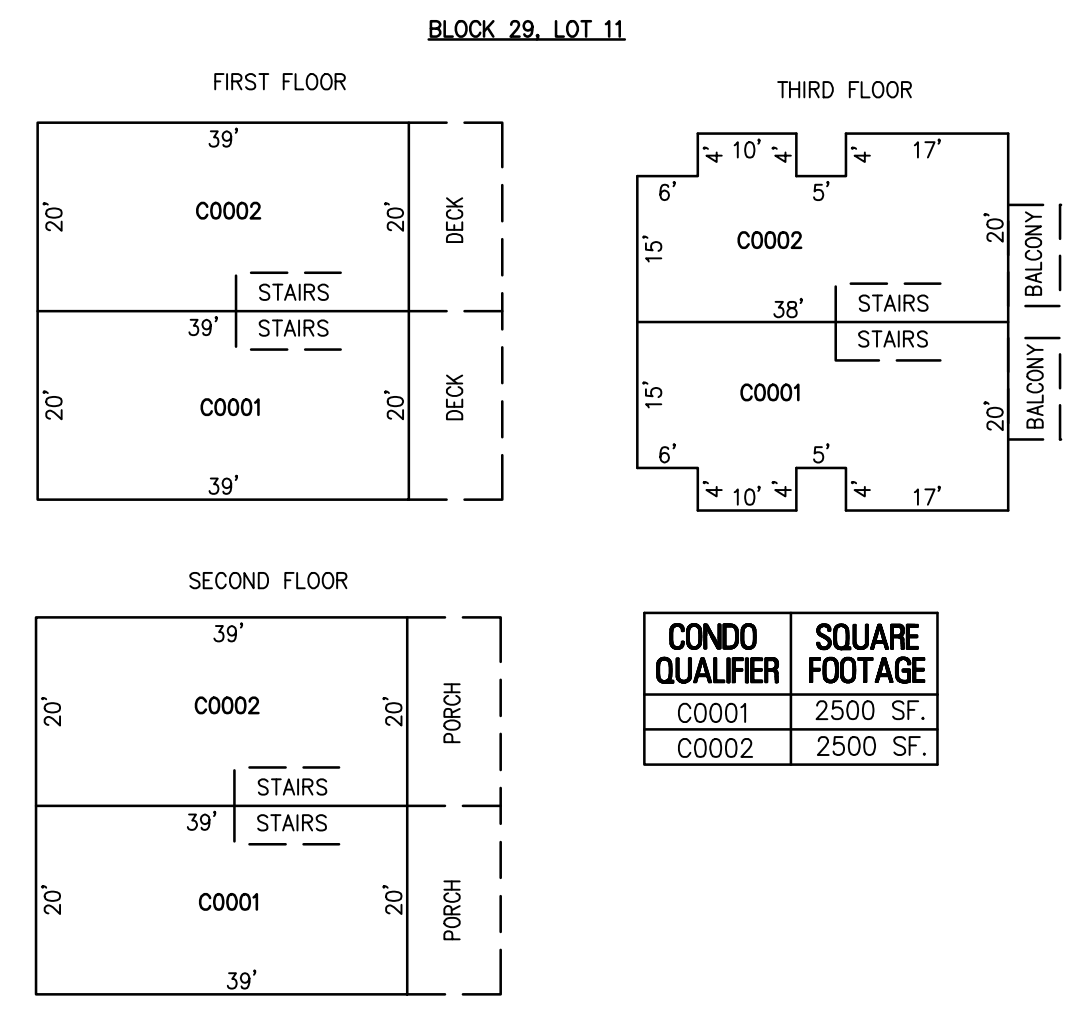
REVISIONS		
DATE	NAME	NO.
2-10-2021	CHARLES E. ADAMSON	42627

NOTE:
THIS SHEET HAS BEEN DRAWN USING COMPUTER AIDED DRAFTING/DESIGN (CADD) AND COORDINATE GEOMETRY (COGO).



29
11
0.07 ACRES±
(TOTAL)

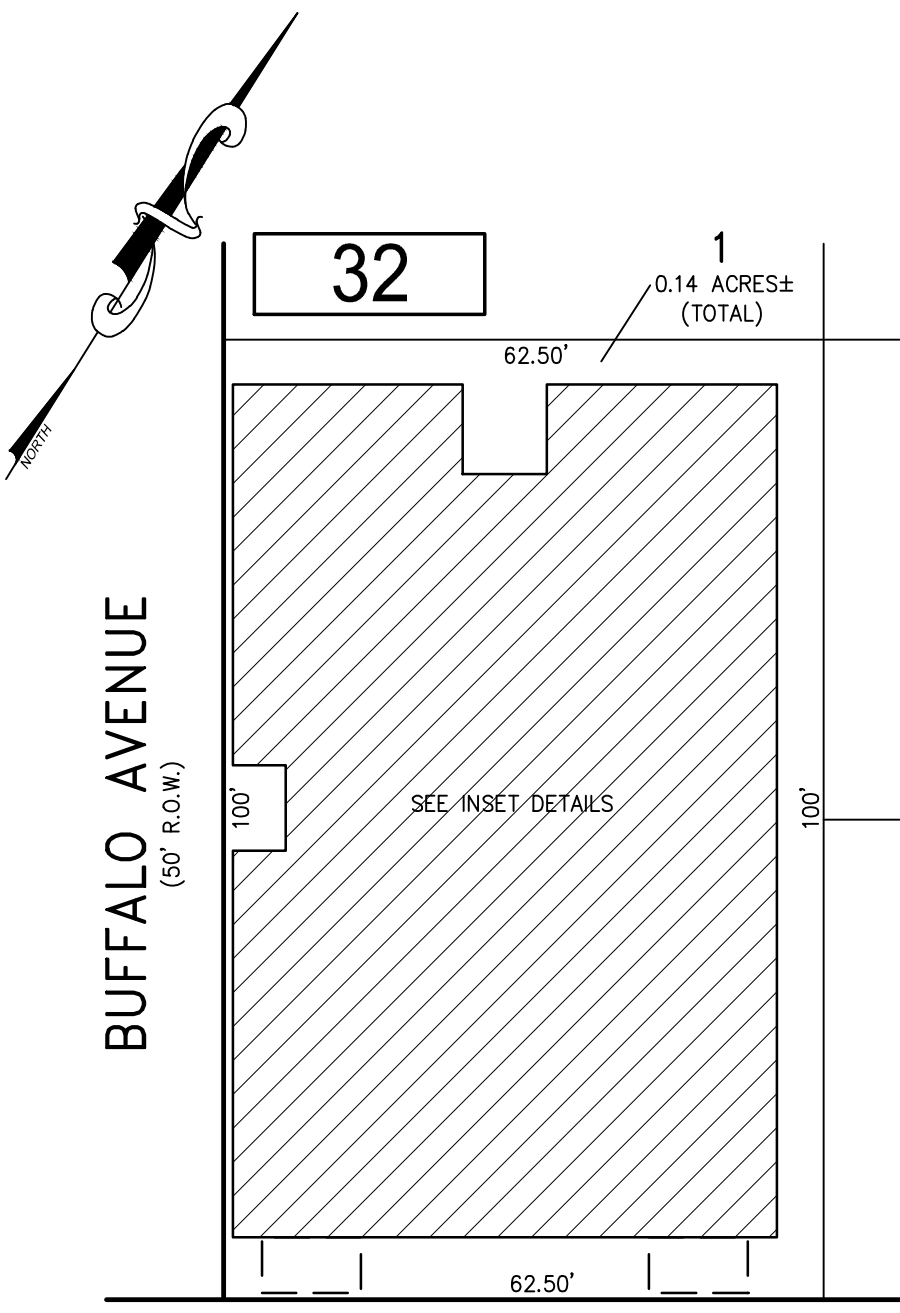
PLAN
SCALE: 1"=20'



DETAILS
SCALE: 1"=20'

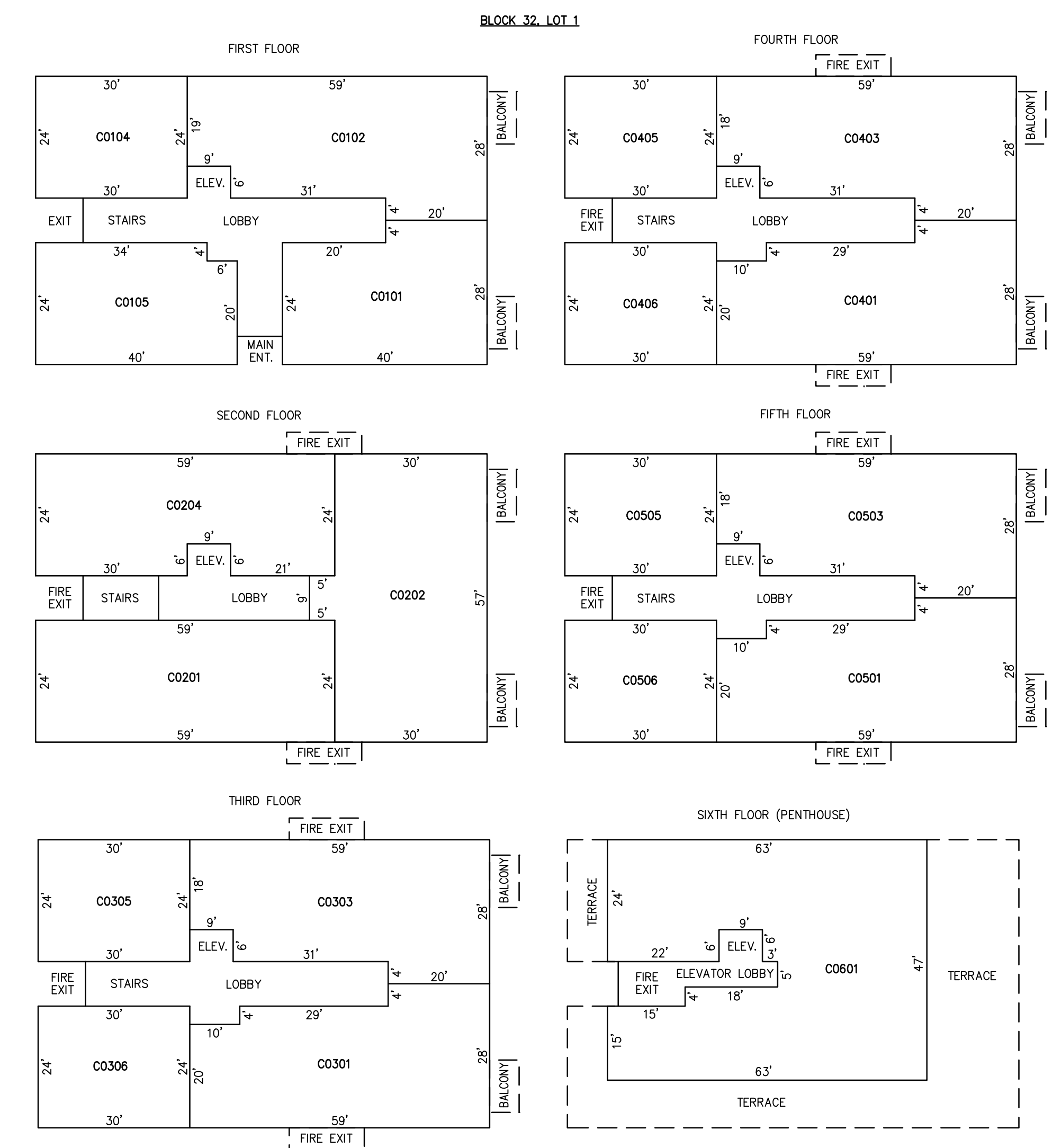
CONDO QUALIFIER	SQUARE FOOTAGE
C0001	2500 SF.
C0002	2500 SF.

BLOCK 29, LOT 11
104 S NEW HAVEN AVENUE CONDOMINIUM



32
1
0.14 ACRES±
(TOTAL)

BOARDWALK
PLAN
SCALE: 1"=20'



DETAILS
SCALE: 1"=20'

BLOCK 32, LOT 1
6800 BOARDWALK CONDOMINIUM
111 S BUFFALO AVENUE

CONDO QUALIFIER	SQUARE FOOTAGE
C0101	875 SF.
C0102	1216 SF.
C0104	637 SF.
C0105	805 SF.
C0201	1247 SF.
C0202	1425 SF.
C0204	1209 SF.
C0301	1308 SF.
C0303	1216 SF.
C0305	800 SF.
C0306	651 SF.
C0401	1307 SF.
C0403	1276 SF.
C0405	663 SF.
C0406	406 SF.
C0501	1229 SF.
C0503	1295 SF.
C0505	678 SF.
C0506	669 SF.
C0601	2800 SF.

BLOCK 29, LOT 11
BLOCK 32, LOT 1
SEE SHEET 6

"THIS TAX MAP SHEET HAS BEEN DIGITALLY REVISED USING COMPUTER-AIDED DRAFTING/DESIGN (CADD) & COORDINATE GEOMETRY (COGO). IT IS BASED ON THE ORIGINAL DIGITALLY DRAWN TAX MAP PLATE BEARING THE OFFICIAL NEW JERSEY DIVISION TAXATION APPROVAL STAMP WITH APPROVAL DATE JULY, 20, 2016. SERIAL NUMBER 1070 AND SIGNATURE OF JUDY P. MILLER, CTA, CHIEF PROPERTY ADMINISTRATION AND SHELLY REILLY, CTA, PRINCIPAL FIELD REPRESENTATIVE. THE ORIGINAL DIGITALLY DRAWN TAX MAP PLATE WITH THE OFFICIAL APPROVAL STAMP IS ON FILE WITH REMINGTON & VERNICK ENGINEERS."

TAX MAP
CITY OF VENTNOR
ATLANTIC COUNTY NEW JERSEY
SCALE: NOTED DATE: 2-19-2015

CHARLES E. ADAMSON NJ PROFESSIONAL LAND SURVEYOR LIC. NO. 42627

RV & W **REMINGTON, VERNICK & WALBERG ENGINEERS**
845 N. MAIN STREET, PLEASANTVILLE, NJ 08232
(609) 645-700, FAX (609) 645-7076
WEB SITE ADDRESS: WWW.RVE.COM
TO SHOW CONDITIONS AS OF 2-10-2021