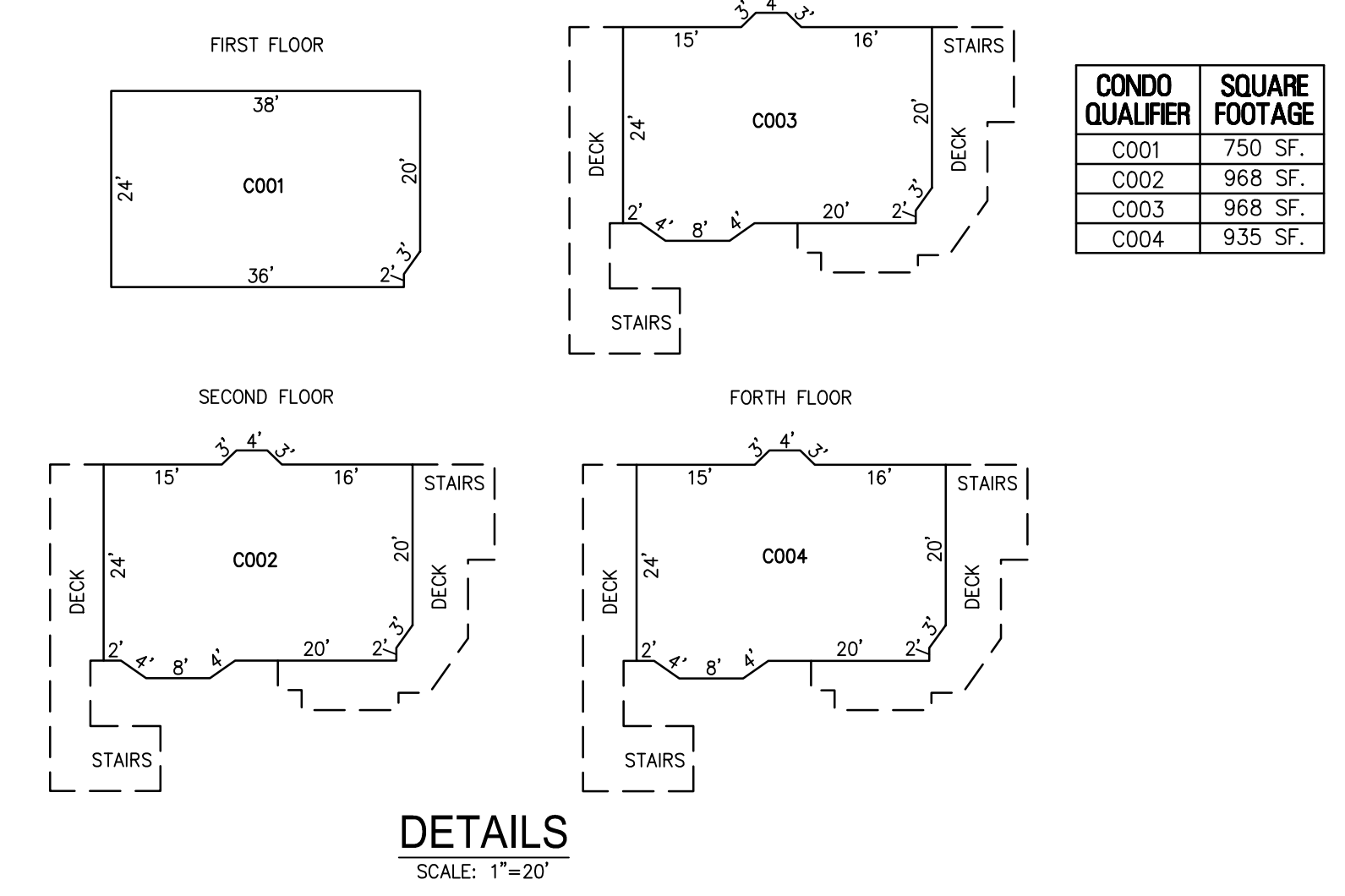
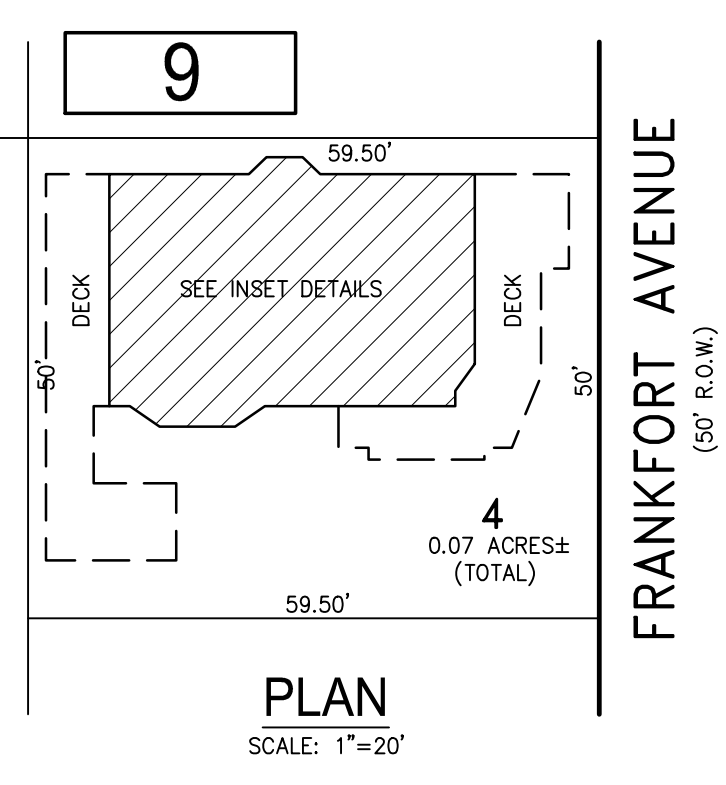
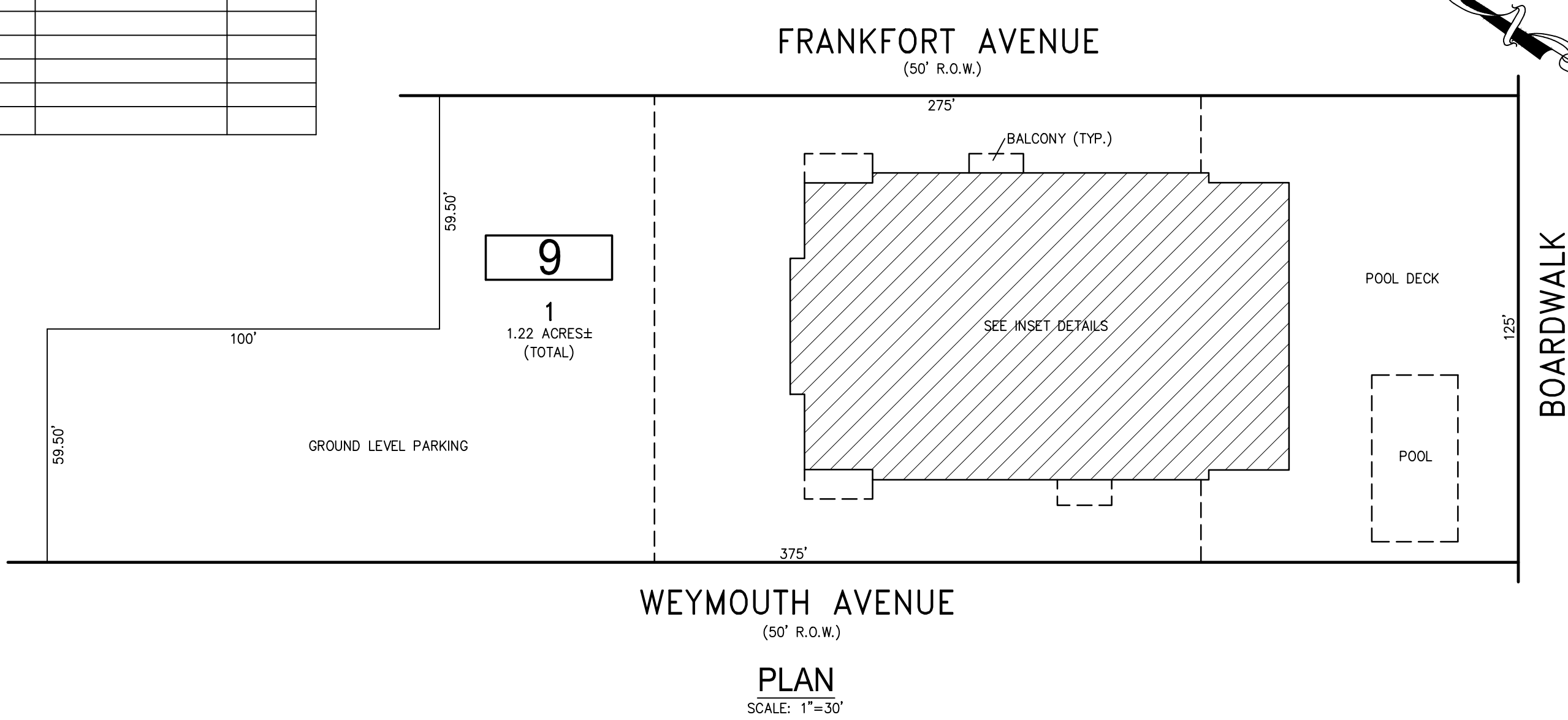
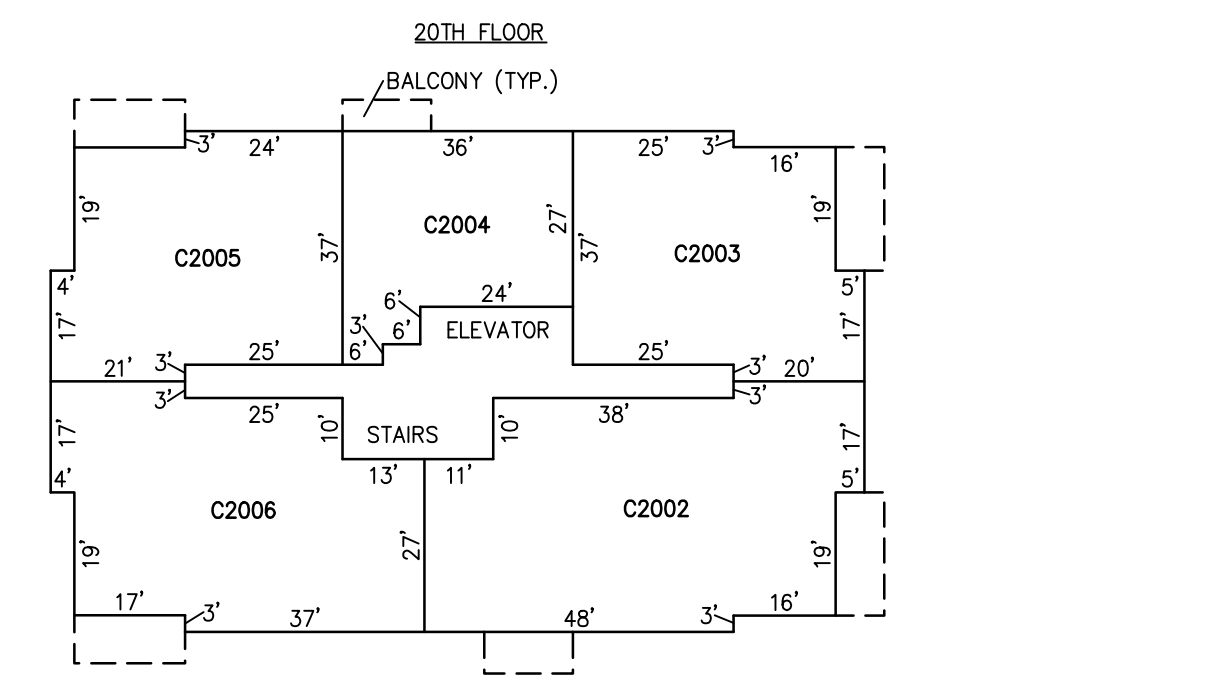
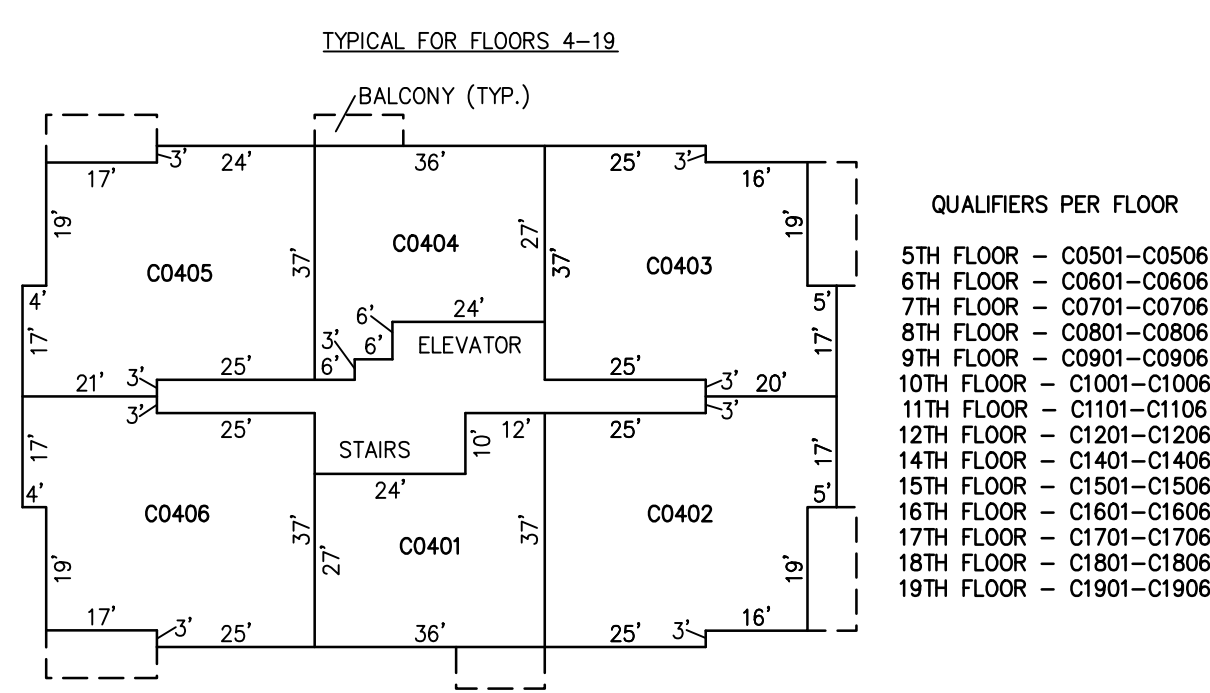
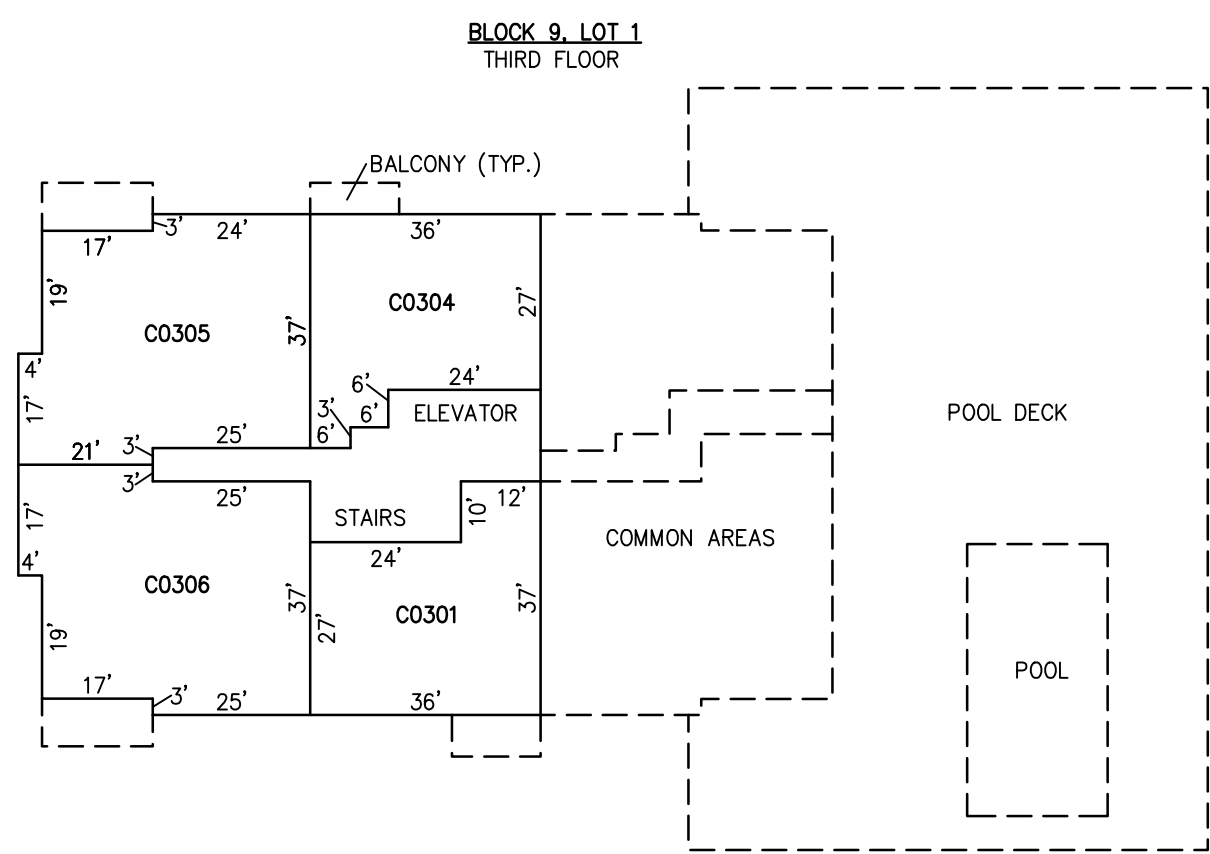


REVISIONS		
DATE	NAME	NO.
9-19-2017	CHARLES E. ADAMSON	42627

**NOTE:**  
THIS SHEET HAS BEEN DRAWN USING COMPUTER AIDED DRAFTING/DESIGN (CAD/D) AND COORDINATE GEOMETRY (COGO).



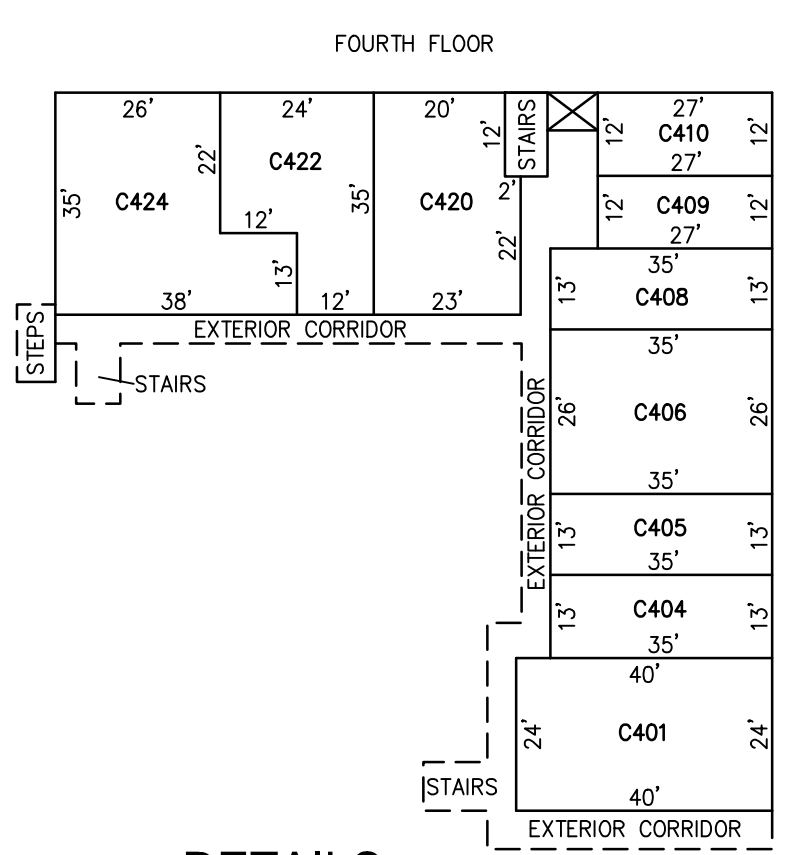
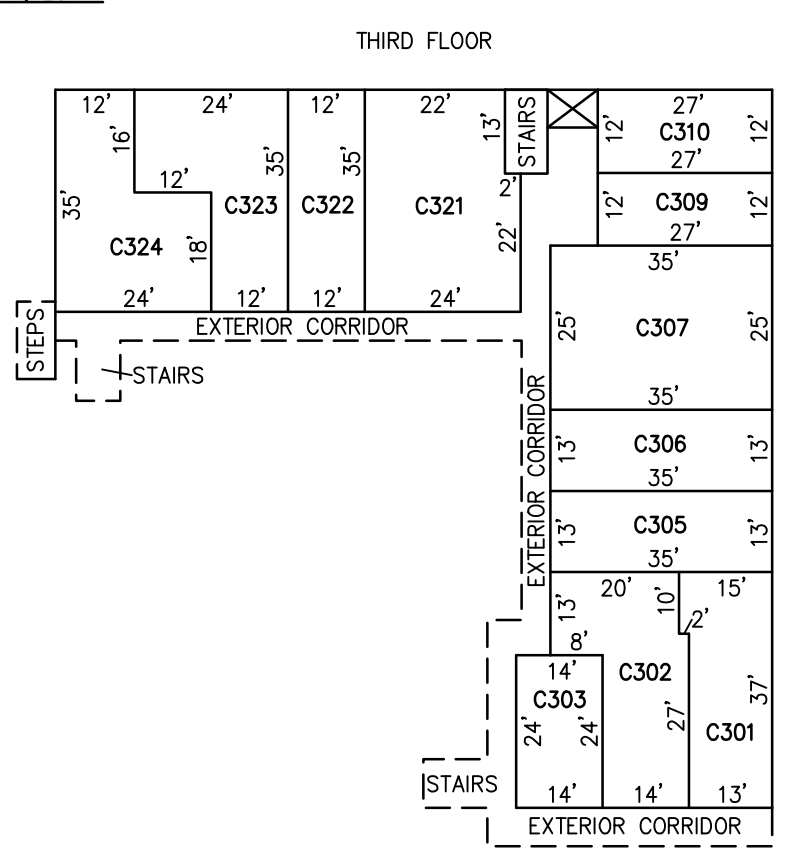
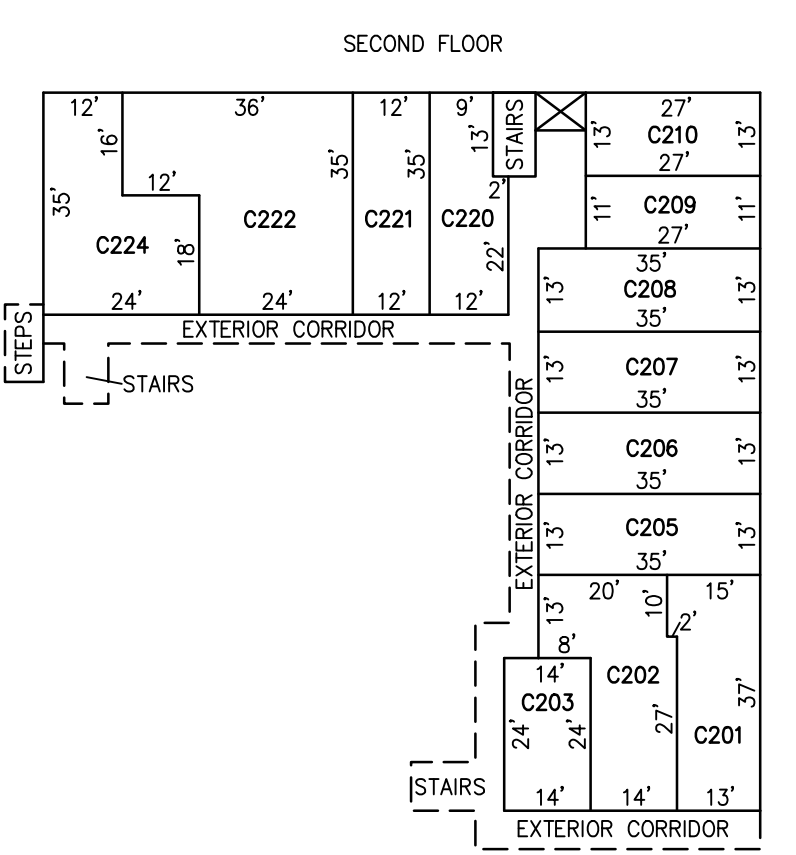
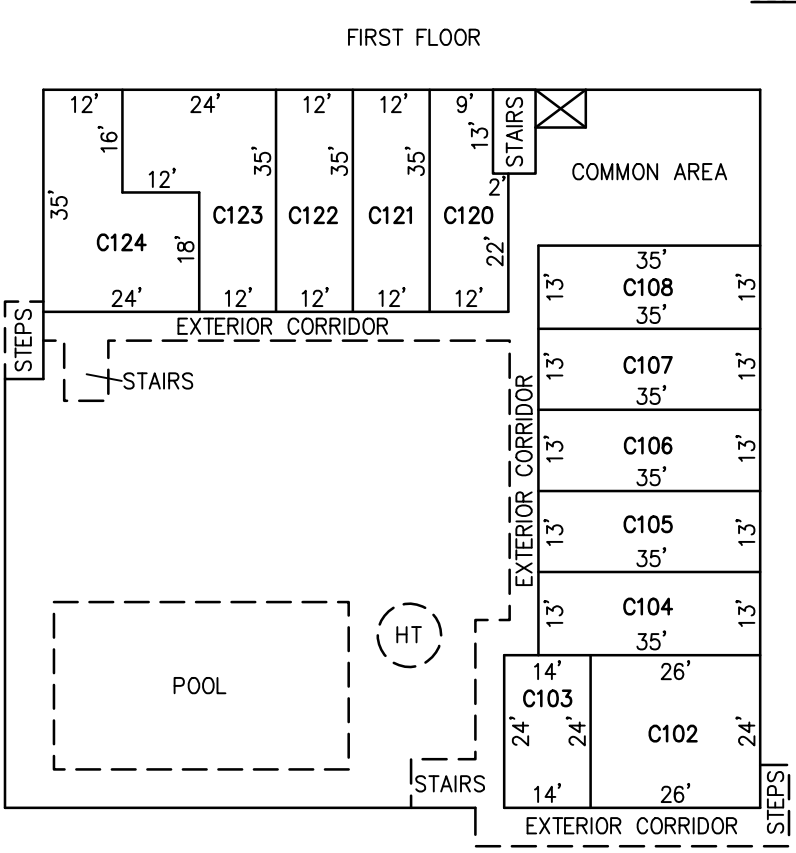
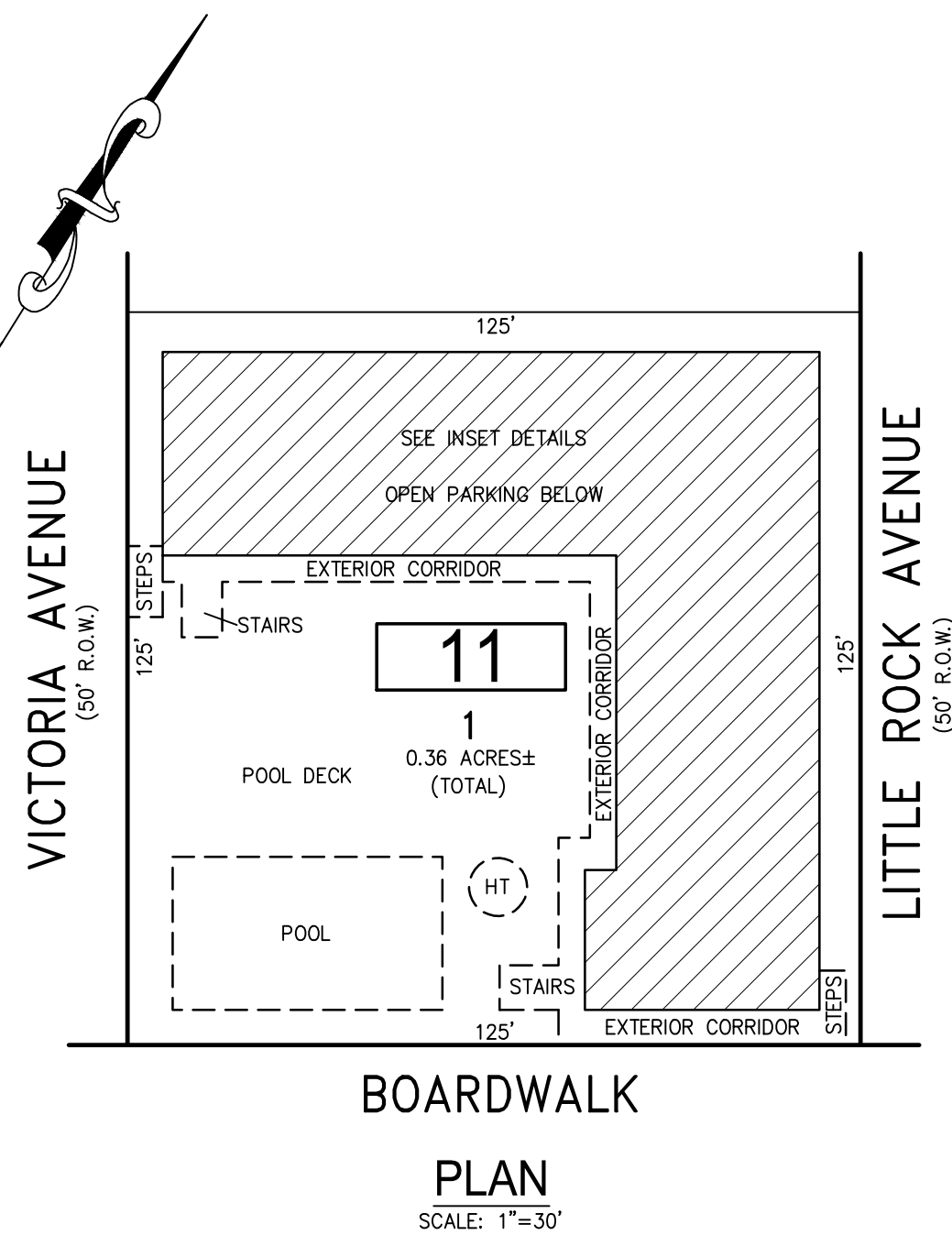
**BLOCK 9, LOT 4**  
**FRANKFORT HOUSE CONDOMINIUM**  
**104 S FRANKFORT AVENUE**



**DETAILS**  
SCALE: 1"=30'

**BLOCK 9, LOT 1**  
**5200 BOARDWALK CONDOMINIUM**

CONDO QUALIFIER	SQUARE FOOTAGE	CONDO QUALIFIER	SQUARE FOOTAGE
C0301	997 SF.	C1401	997 SF.
C0304	997 SF.	C1402	1510 SF.
C0305	1510 SF.	C1403	1510 SF.
C0306	1510 SF.	C1404	997 SF.
C0401	997 SF.	C1405	1510 SF.
C0402	1510 SF.	C1406	1510 SF.
C0403	1510 SF.	C1501	997 SF.
C0404	997 SF.	C1502	1510 SF.
C0405	1510 SF.	C1503	1510 SF.
C0406	1510 SF.	C1504	997 SF.
C0501	997 SF.	C1505	1510 SF.
C0502	1510 SF.	C1506	1510 SF.
C0503	1510 SF.	C1601	997 SF.
C0504	997 SF.	C1602	1510 SF.
C0505	1510 SF.	C1603	1510 SF.
C0506	1510 SF.	C1604	997 SF.
C0601	997 SF.	C1605	1510 SF.
C0602	1510 SF.	C1606	1510 SF.
C0603	1510 SF.	C1701	997 SF.
C0604	997 SF.	C1702	1510 SF.
C0605	1510 SF.	C1703	1510 SF.
C0606	1510 SF.	C1704	997 SF.
C0701	997 SF.	C1705	1510 SF.
C0702	1510 SF.	C1706	1510 SF.
C0703	1510 SF.	C1801	997 SF.
C0704	997 SF.	C1802	1510 SF.
C0705	1510 SF.	C1803	1510 SF.
C0706	1510 SF.	C1804	997 SF.
C0801	997 SF.	C1805	1510 SF.
C0802	1510 SF.	C1806	1510 SF.
C0803	1510 SF.	C1901	997 SF.
C0804	997 SF.	C1902	1510 SF.
C0805	1510 SF.	C1903	1510 SF.
C0806	1510 SF.	C1904	997 SF.
C0901	997 SF.	C1905	1510 SF.
C0902	1510 SF.	C1906	1510 SF.
C0903	1510 SF.	C2002	2200 SF.
C0904	997 SF.	C2003	1510 SF.
C0905	1510 SF.	C2004	997 SF.
C0906	1510 SF.	C2005	1510 SF.
C1001	997 SF.	C2006	1810 SF.
C1002	1510 SF.		
C1003	1510 SF.		
C1004	997 SF.		
C1005	1510 SF.		
C1006	1510 SF.		
C1101	997 SF.		
C1102	1510 SF.		
C1103	1510 SF.		
C1104	997 SF.		
C1105	1510 SF.		
C1106	1510 SF.		
C1201	997 SF.		
C1202	1510 SF.		
C1203	1510 SF.		
C1204	997 SF.		
C1205	1510 SF.		
C1206	1510 SF.		



**DETAILS**  
SCALE: 1"=30'

CONDO QUALIFIER	SQUARE FOOTAGE
C102	597 SF.
C103	295 SF.
C104	419 SF.
C105	413 SF.
C106	413 SF.
C107	413 SF.
C108	413 SF.
C120	354 SF.
C121	389 SF.
C122	389 SF.
C123	573 SF.
C124	602 SF.
C201	501 SF.
C202	535 SF.
C203	295 SF.
C205	413 SF.
C206	413 SF.
C207	419 SF.
C208	419 SF.
C209	278 SF.
C210	302 SF.
C220	354 SF.
C221	389 SF.
C222	962 SF.
C224	602 SF.
C301	509 SF.
C302	526 SF.
C303	295 SF.
C305	413 SF.
C306	413 SF.
C307	832 SF.
C309	278 SF.
C310	302 SF.
C321	743 SF.
C322	389 SF.
C323	573 SF.
C324	602 SF.
C401	995 SF.
C404	413 SF.
C405	413 SF.
C406	826 SF.
C408	419 SF.
C409	278 SF.
C410	302 SF.
C420	743 SF.
C422	587 SF.
C424	934 SF.

**BLOCK 11, LOT 1**  
**5300 BOARDWALK CONDOMINIUM**

"THIS TAX MAP SHEET HAS BEEN DIGITALLY REVISED USING COMPUTER-AIDED DRAFTING/DESIGN (CADD) & COORDINATE GEOMETRY (COGO). IT IS BASED ON THE ORIGINAL DIGITALLY DRAWN TAX MAP PLATE BEARING THE OFFICIAL NEW JERSEY DIVISION TAXATION APPROVAL STAMP WITH APPROVAL DATE JULY, 20, 2016. SERIAL NUMBER 1070 AND SIGNATURE OF JUDY P. MILLER, CTA, CHIEF PROPERTY ADMINISTRATION AND SHELLY REILLY, CTA, PRINCIPAL FIELD REPRESENTATIVE. THE ORIGINAL DIGITALLY DRAWN TAX MAP PLATE WITH THE OFFICIAL APPROVAL STAMP IS ON FILE WITH REMINGTON & VERNICK ENGINEERS."

**TAX MAP**  
**CITY OF VENTNOR**  
ATLANTIC COUNTY NEW JERSEY  
SCALE: NOTED DATE: 2-19-2015

**CHARLES E. ADAMSON** NJ PROFESSIONAL LAND SURVEYOR LIC. NO. 42627  
24 GA 28048700

**RV & W** **REMINGTON, VERNICK & WALBERG ENGINEERS**  
845 N. MAIN STREET, PLEASANTVILLE, NJ 08232  
(609) 645-7700, FAX (609) 645-7076  
WEB SITE ADDRESS: WWW.RVW.COM  
TO SHOW CONDITIONS AS OF 3-01-2022

BLOCK 9, LOT 1  
BLOCK 9, LOT 4  
BLOCK 11, LOT 1  
SEE SHEET 2