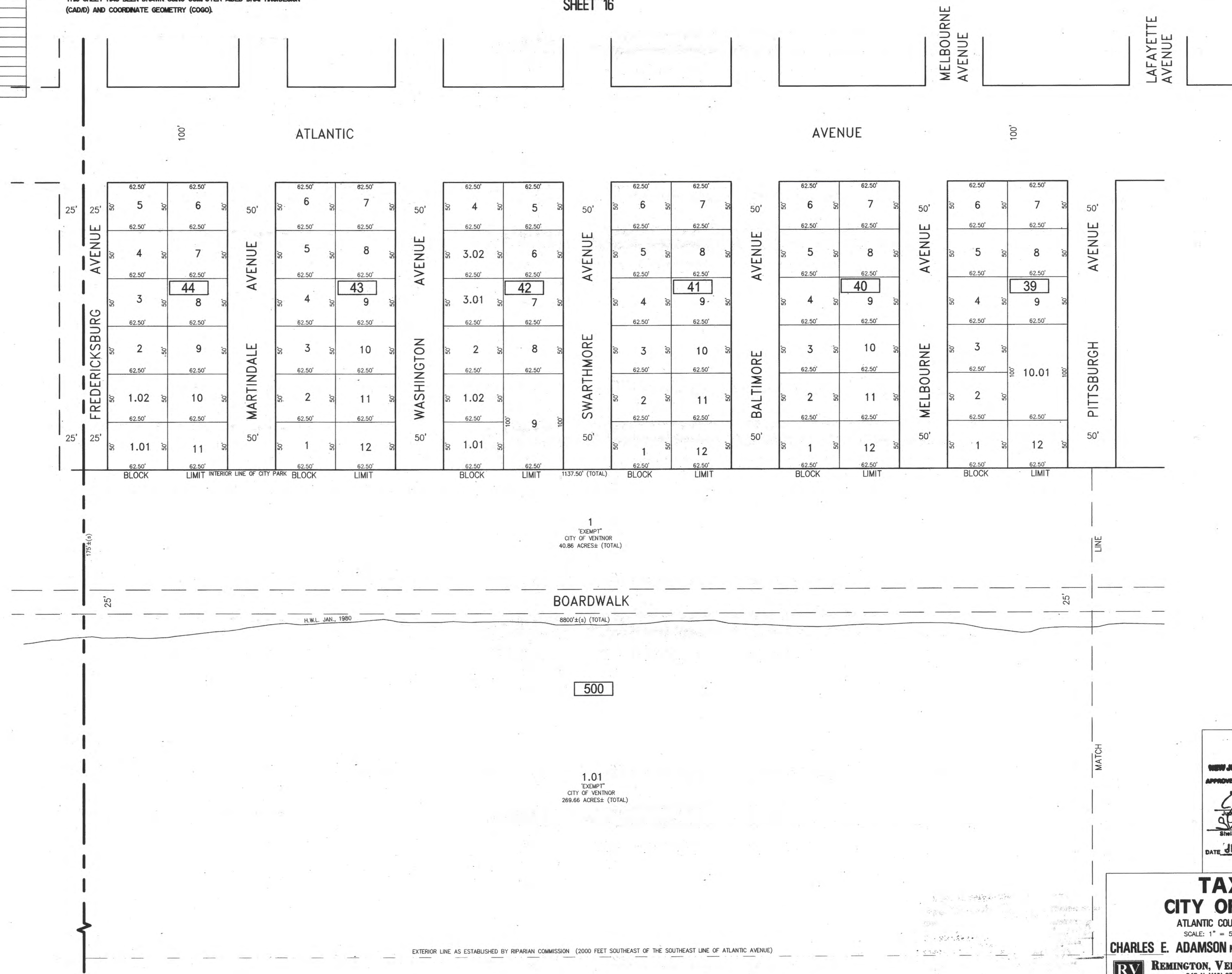


REVISIONS		
DATE	NAME	NO.

NOTE: THIS SHEET HAS BEEN DRAWN USING COMPUTER AIDED DRAFTING/DESIGN (CAD/D) AND COORDINATE GEOMETRY (COGO).

SHEET 16

CITY OF MARGATE  
COUNTY OF ATLANTIC



SHEET 7

NEW JERSEY DEPARTMENT OF THE TREASURY  
DIVISION OF REVENUE  
APPROVED AS A TAX MAP PURSUANT TO THE AUTHORITY OF  
N.J.S.A. 54:1-16 AND N.J.S.A. 54:1-17  
FOR THE DIRECTOR, DIVISION OF REVENUE  
*Charles Miller CTA*  
Charles P. Miller, CTA, Chief Property Assessor  
*Shelly Reilly CTA*  
Shelly Reilly, CTA, Principal Field Representative  
DATE JUL 20 2016 SERIAL NO. F1070

**TAX MAP**  
**CITY OF VENTNOR**  
ATLANTIC COUNTY NEW JERSEY  
SCALE: 1" = 50' DATE: 2-19-2015  
CHARLES E. ADAMSON NJ PROFESSIONAL LAND SURVEYOR LIC. NO. 42627  
**RV & W**  
**REMINGTON, VERNICK & WALBERG ENGINEERS**  
24 GA. 28048700  
845 N. MAIN STREET, PLEASANTVILLE, NJ 08232  
(609) 645-7000 FAX (609) 645-7076  
WEB SITE ADDRESS: WWW.RVE.COM  
TO SHOW CONDITIONS AS OF 7-20-2016