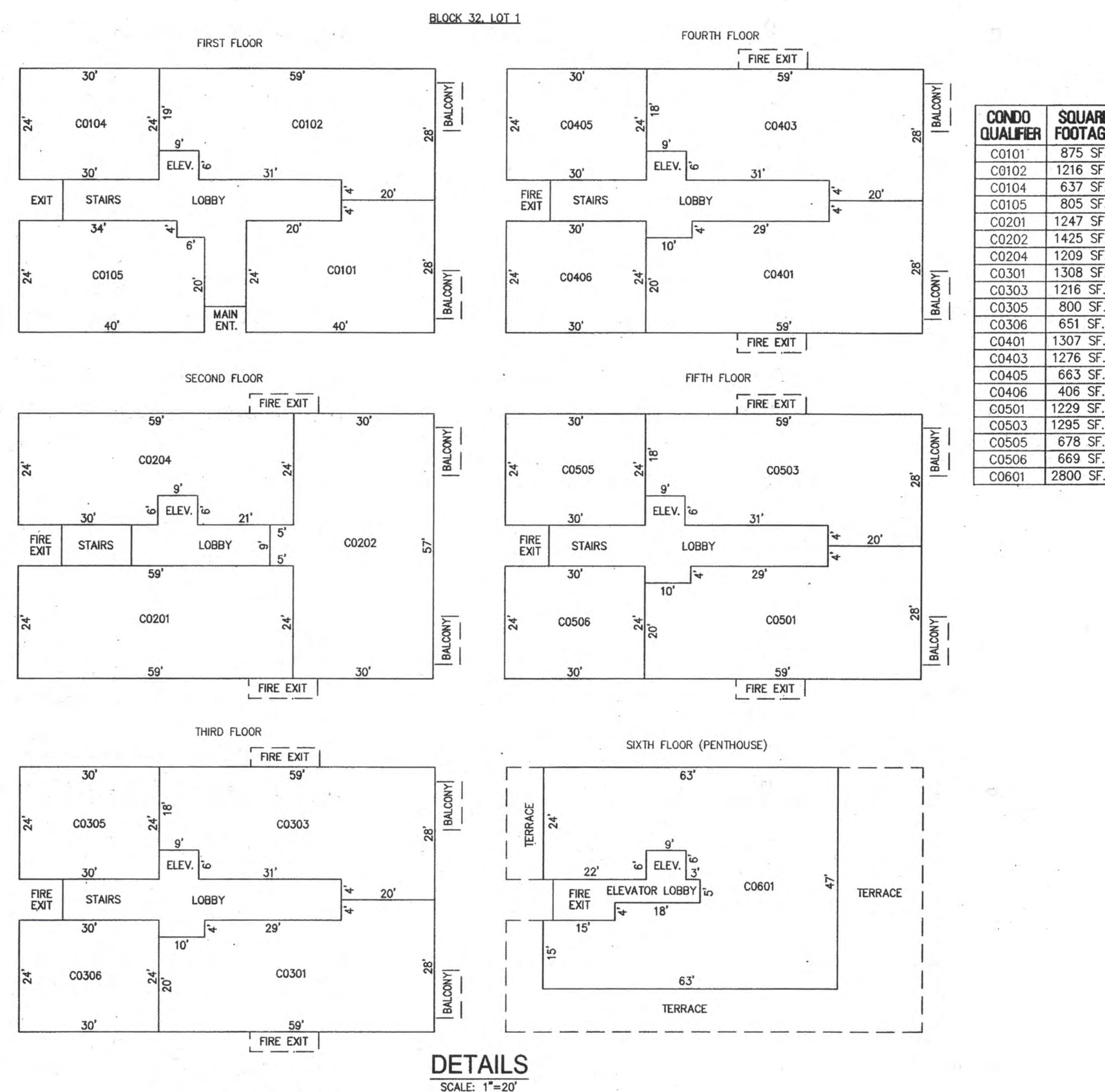
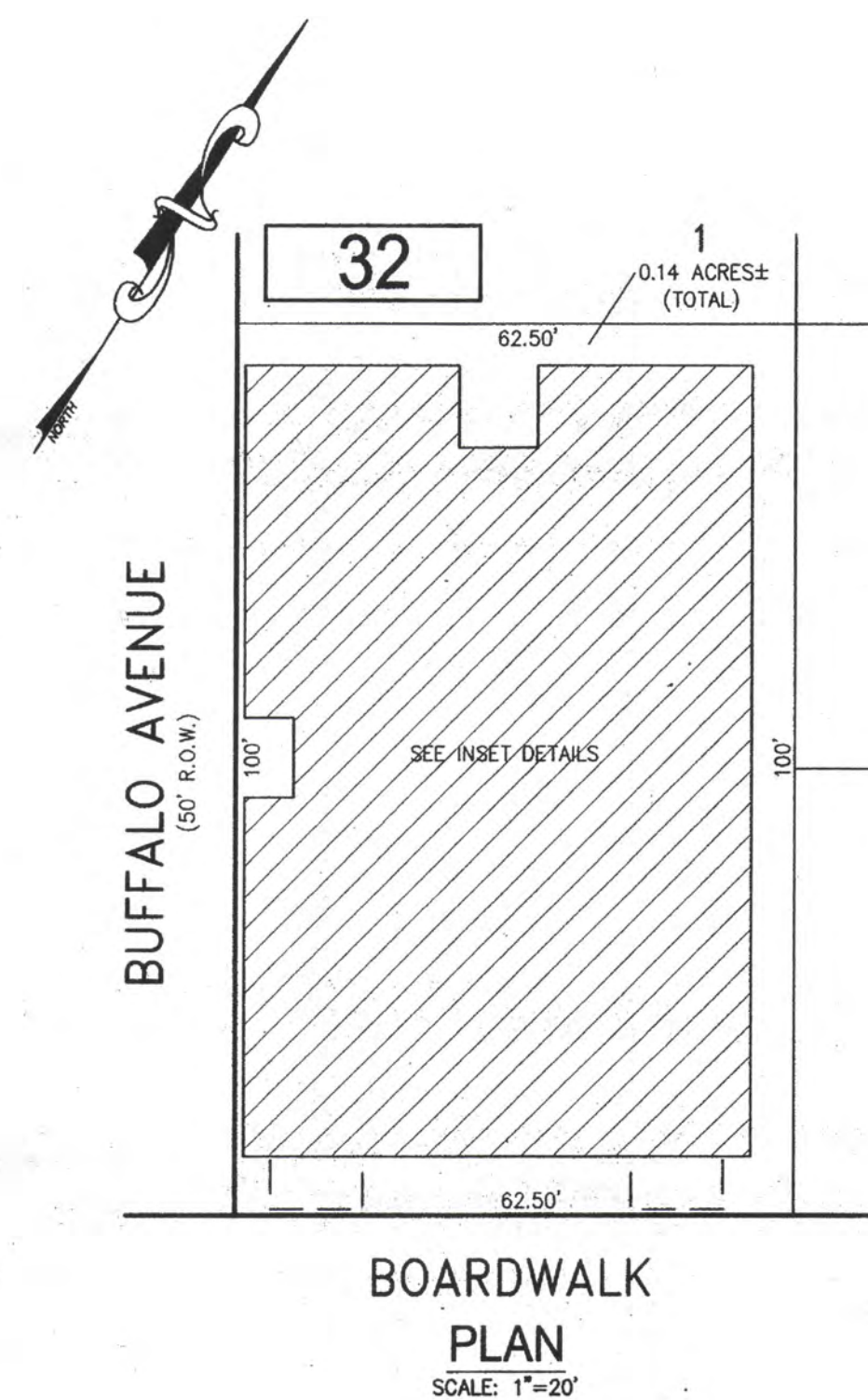


REVISIONS		
DATE	NAME	NO.

NOTE:
THIS SHEET HAS BEEN DRAWN USING COMPUTER AIDED DRAFTING/DESIGN (CAD/D) AND COORDINATE GEOMETRY (COGO).



BLOCK 32, LOT 1
6800 BOARDWALK CONDOMINIUM
111 S BUFFALO AVENUE

NEW JERSEY DEPARTMENT OF THE TREASURY
DIVISION OF TAXATION
APPROVED AS A BILL MAP PURSUANT TO THE AUTHORITY OF
N.J.S.A. 52-1-45 AND N.J.S.A. 52-50-1
FOR THE DIRECTOR, DIVISION OF TAXATION
Chad Miller CTA
Chad P. Miller, CTA, Chief Property Administrator
Shelly Kelly CTA
Shelly Kelly, CTA, Principal Property Representative
DATE: JUL 20 2016 SERIAL NO. 1070

TAX MAP
CITY OF VENTNOR
ATLANTIC COUNTY NEW JERSEY
SCALE: NOTED DATE: 2-19-2015
CHARLES E. ADAMSON NJ PROFESSIONAL LAND SURVEYOR LIC. NO. 42627
REMINGTON, VERNICK & WALBERG ENGINEERS
845 N. MAIN STREET, PLEASANTVILLE, N.J. 08232
(609) 646-7100, FAX (609) 646-7076
WEB SITE ADDRESS: WWW.RVW.COM
TO SHOW CONDITIONS AS OF 7-20-2016

BLOCK 32, LOT 1
SEE SHEET 6