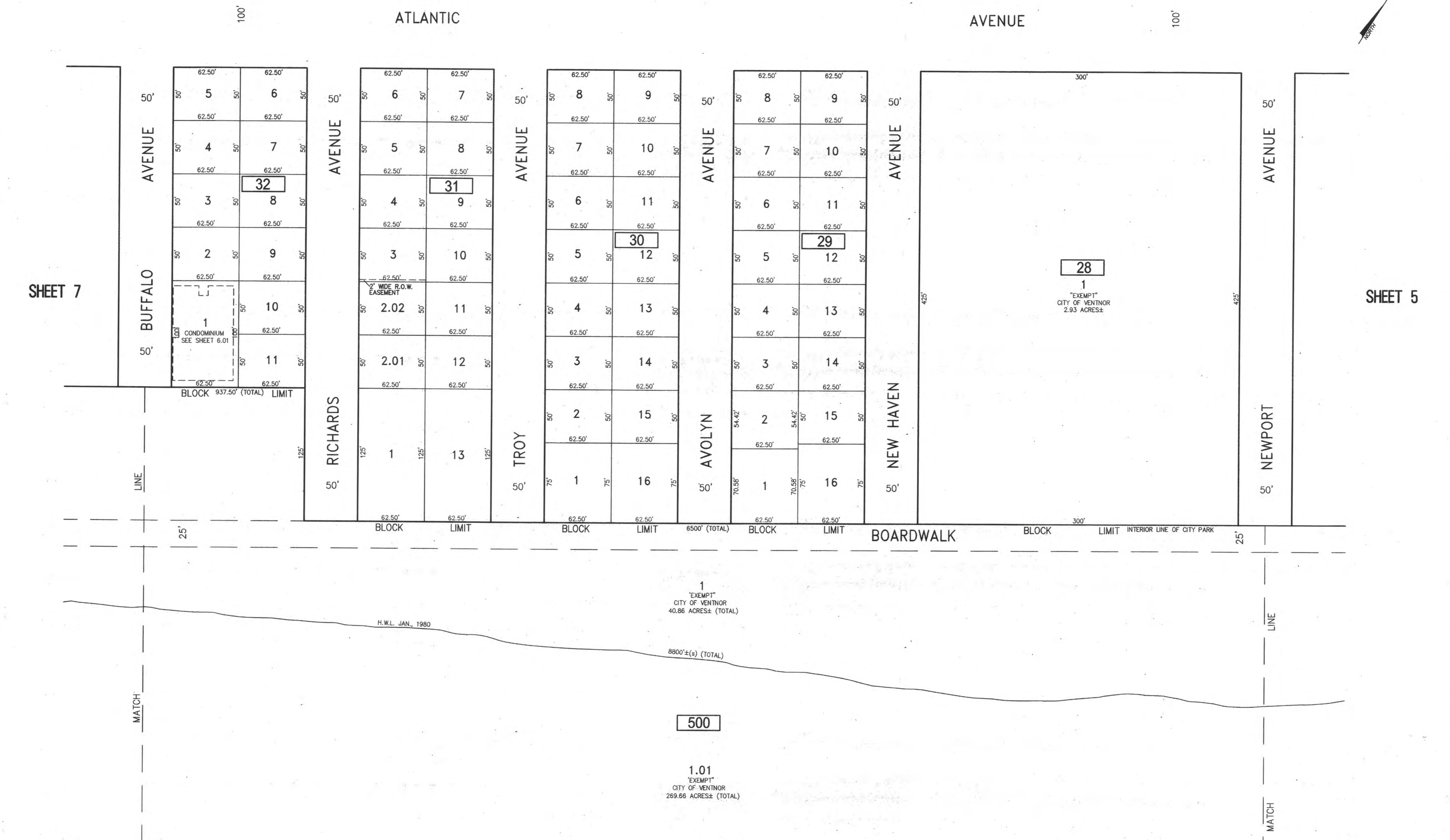
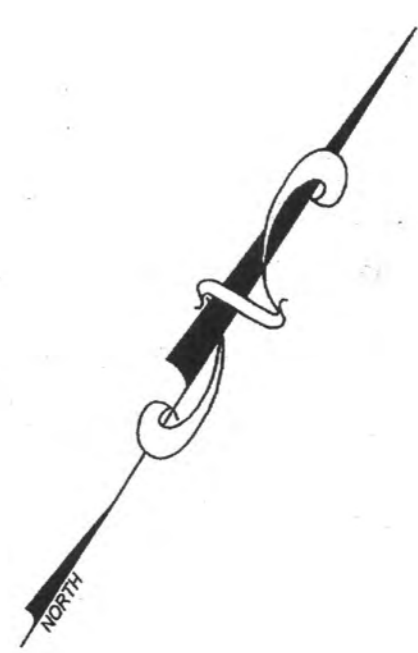


NOTE:
THIS SHEET HAS BEEN DRAWN USING COMPUTER AIDED DRAFTING/DESIGN
(CAD/D) AND COORDINATE GEOMETRY (COGO).

SHEET 14

REVISIONS		
DATE	NAME	NO.



SHEET 7

SHEET 5

NEW JERSEY DEPARTMENT OF THE TREASURY
 DIVISION OF TAXATION
 APPROVED AS A TAX MAP DOCUMENT BY THE AUTHORITY OF
 N.J.S.A. 54:5 and N.J.A.C. 17:27
 FOR THE DIRECTOR, DIVISION OF TAXATION
Charles Miller CTA
 Julia P. Miller, B.S.A. Chief Property Administration
Shelly Kelly, CTA
 Shelly Kelly, CTA Principal Representative
 DATE: JUL 20 2018 SERIAL NO. F1070

TAX MAP
CITY OF VENTNOR

ATLANTIC COUNTY NEW JERSEY
SCALE: 1" = 50' DATE: 2-19-2015

CHARLES E. ADAMSON NJ PROFESSIONAL LAND SURVEYOR LIC. NO. 42827
24 GA 28048700

RV **W** **REMINGTON, VERNICK & WALBERG ENGINEERS**
845 N. MAIN STREET, PLEASANTVILLE, N.J. 08232
(609) 645-7100, FAX (609) 645-7076
WEB SITE ADDRESS: WWW.RVWE.COM

TO SHOW CONDITIONS AS OF 7-20-2016