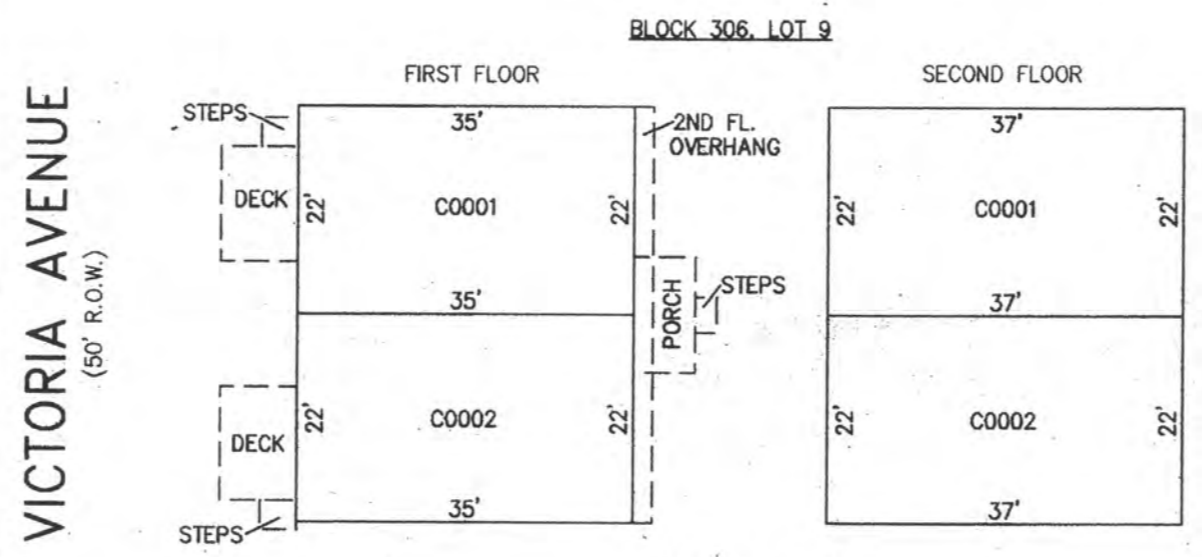
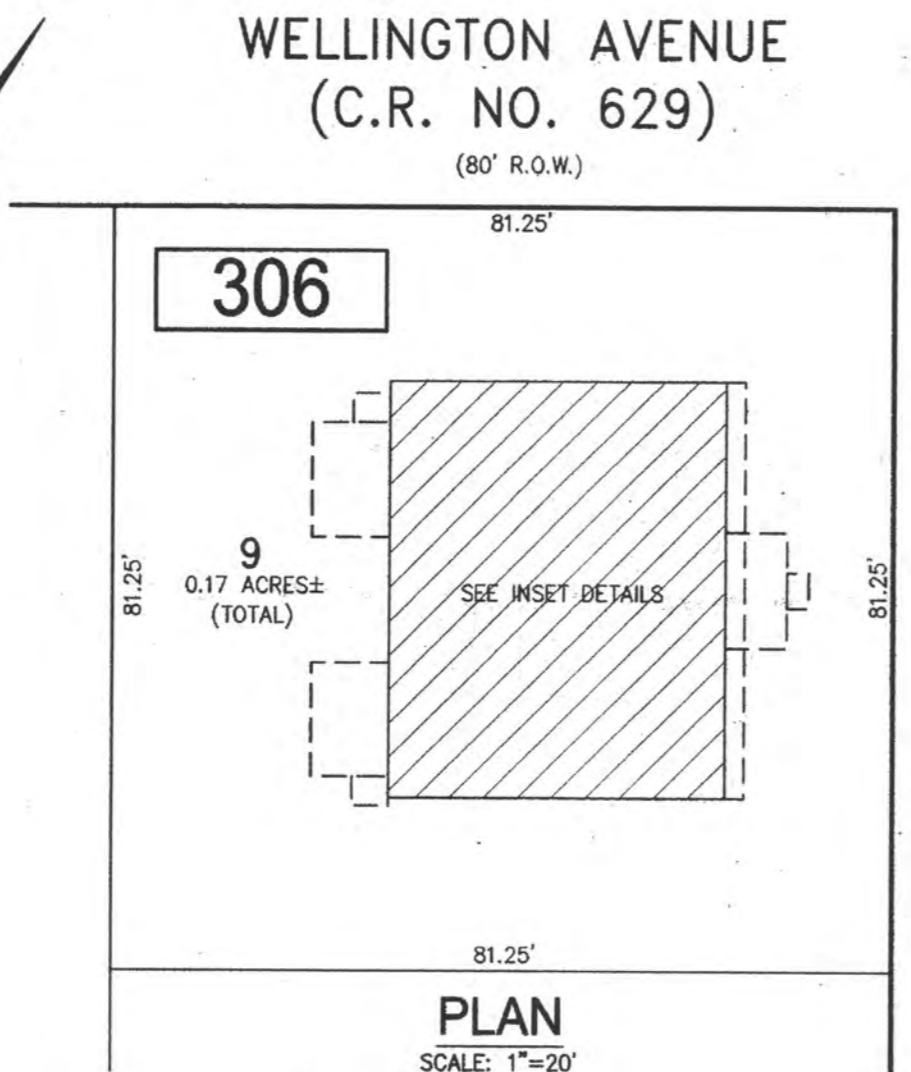


REVISIONS		
DATE	NAME	NO.

NOTE:
THIS SHEET HAS BEEN DRAWN USING COMPUTER AIDED DRAFTING/DESIGN (CAD/D) AND COORDINATE GEOMETRY (COGO).

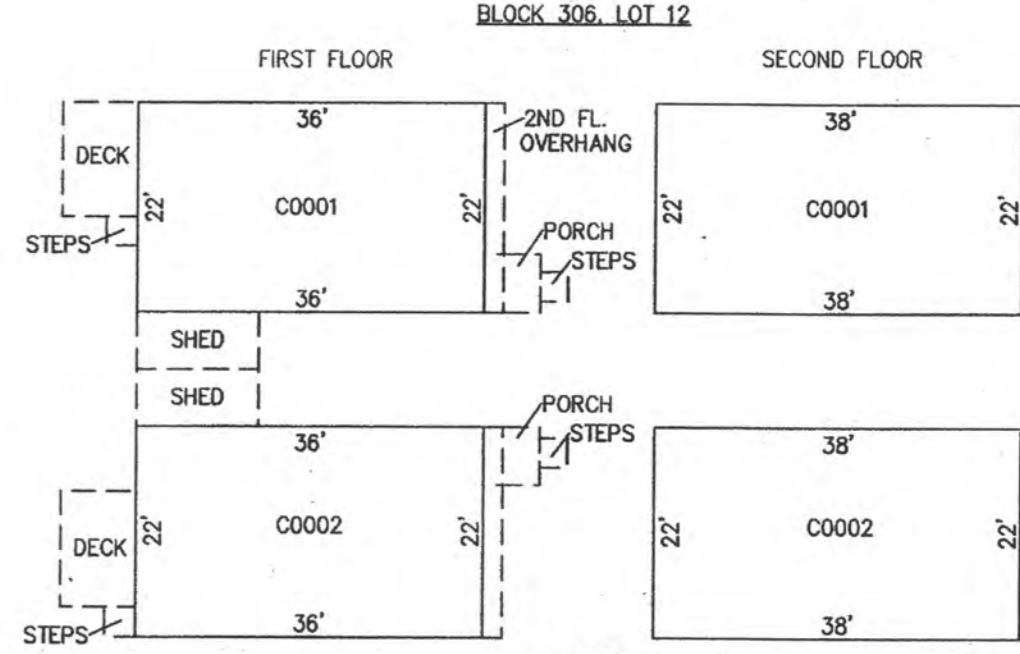
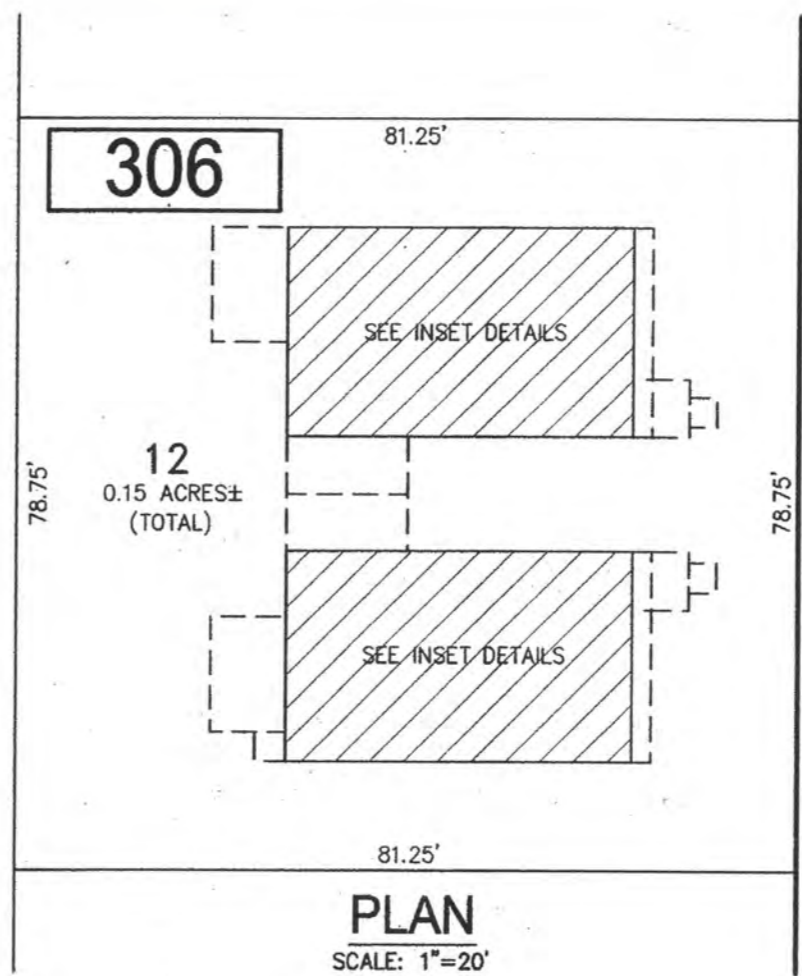


CONDO QUALIFIER	SQUARE FOOTAGE
C0001	1573 SF.
C0002	1573 SF.

PLAN
SCALE: 1"=20'

DETAILS
SCALE: 1"=20'

BLOCK 306, LOT 9
THE VICTORIA IX CONDOMINIUM
610 N. VICTORIA AVENUE

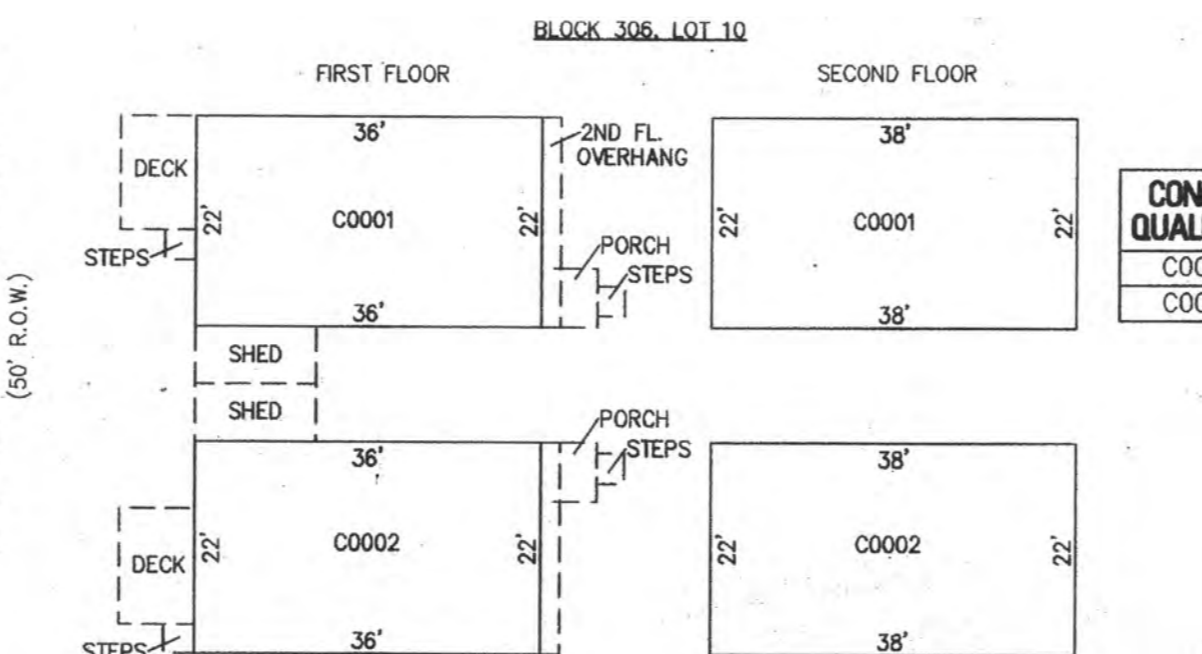
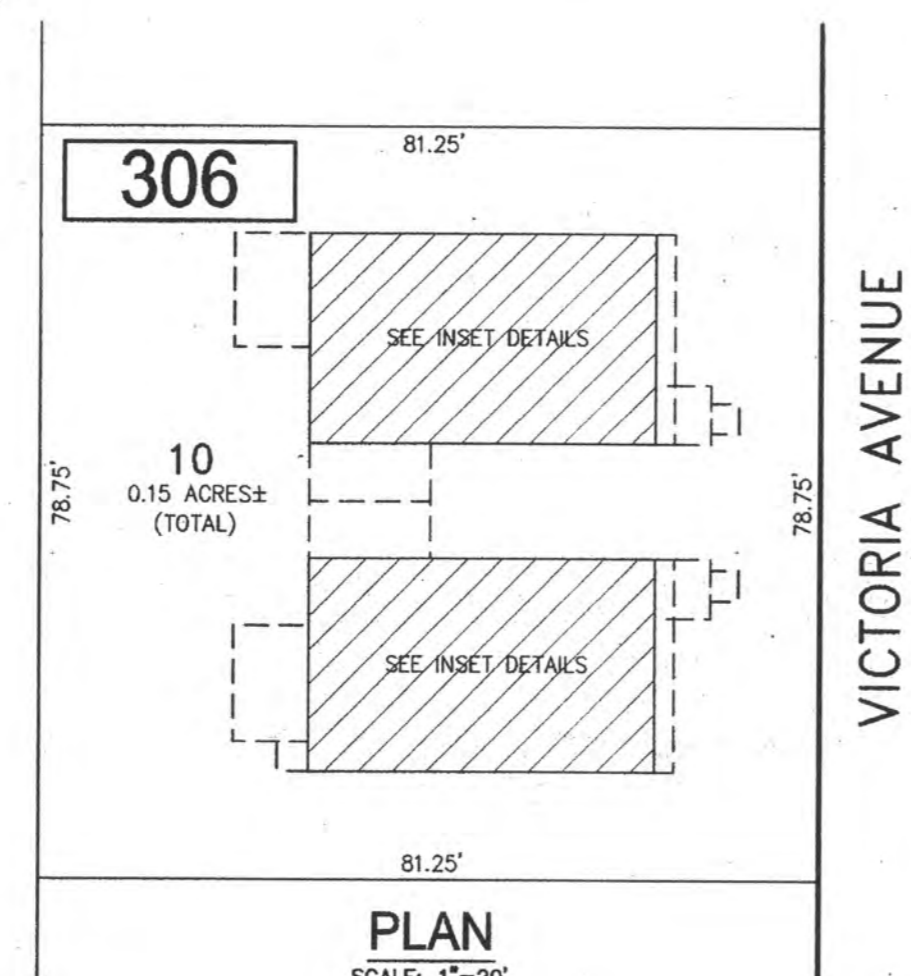


CONDO QUALIFIER	SQUARE FOOTAGE
C0001	1645 SF.
C0002	1645 SF.

PLAN
SCALE: 1"=20'

DETAILS
SCALE: 1"=20'

BLOCK 306, LOT 12
THE VICTORIA XII CONDOMINIUM
604 N. VICTORIA AVENUE

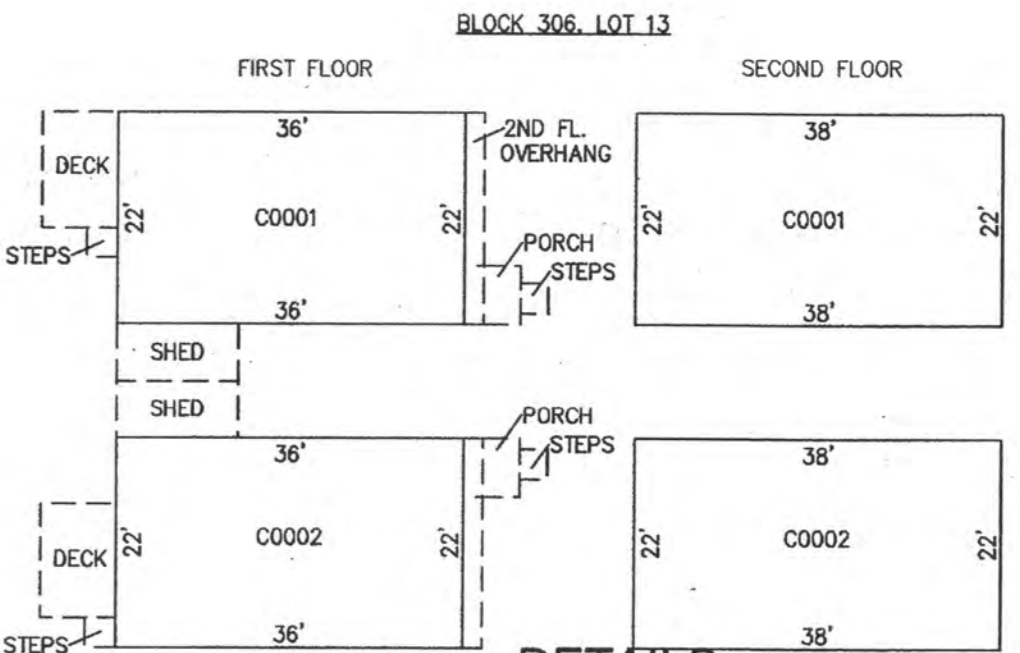
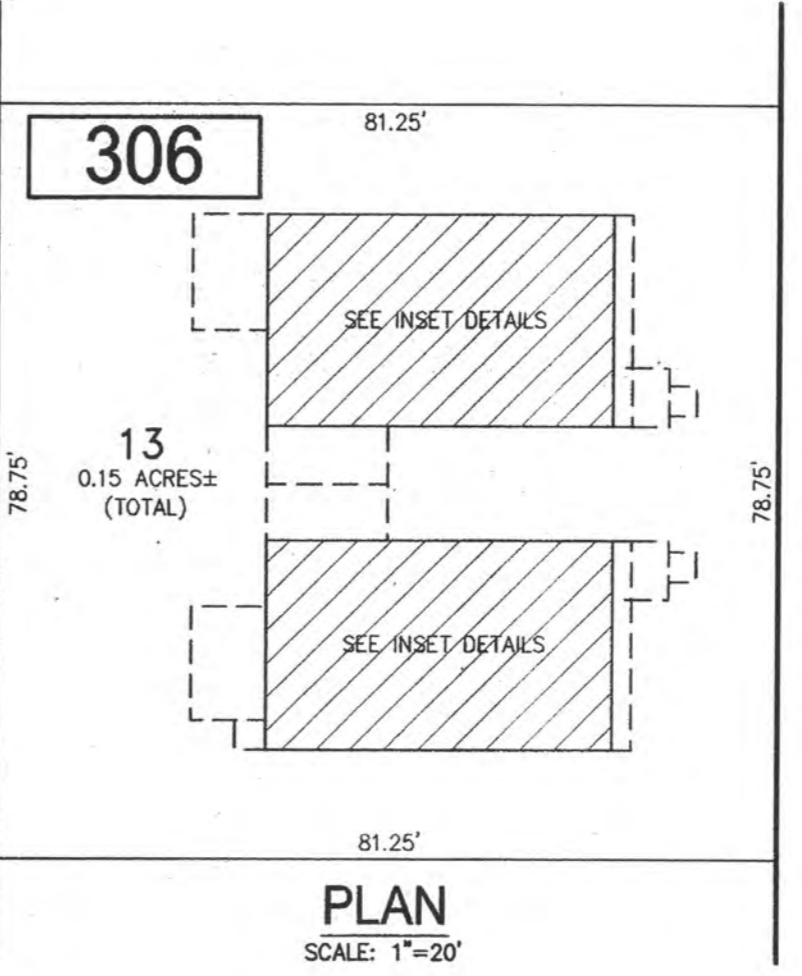


CONDO QUALIFIER	SQUARE FOOTAGE
C0001	1645 SF.
C0002	1645 SF.

PLAN
SCALE: 1"=20'

DETAILS
SCALE: 1"=20'

BLOCK 306, LOT 10
THE VICTORIA X CONDOMINIUM
608 N. VICTORIA AVENUE

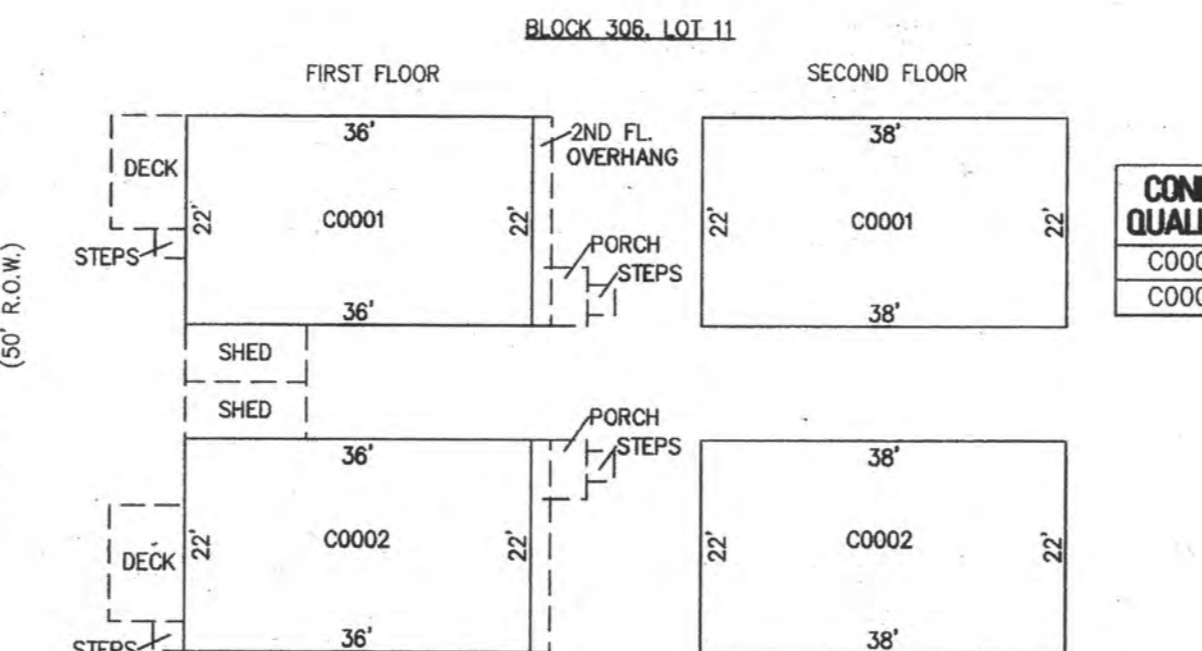
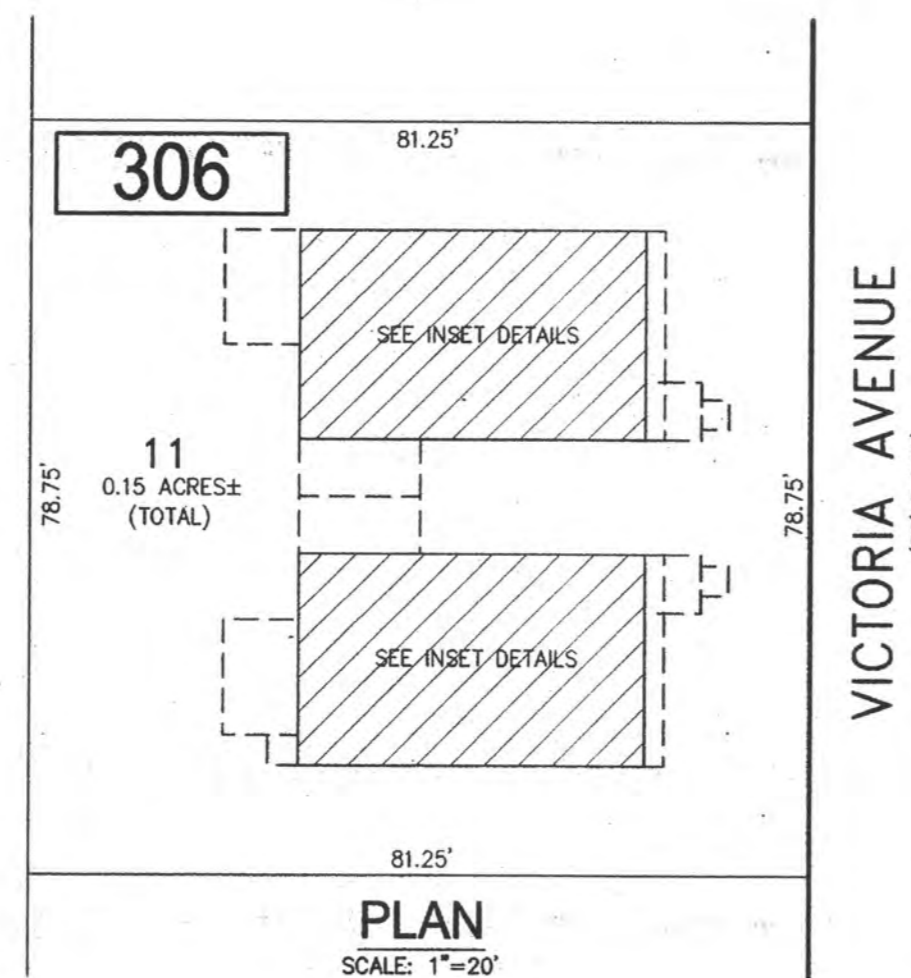


CONDO QUALIFIER	SQUARE FOOTAGE
C0001	1645 SF.
C0002	1645 SF.

PLAN
SCALE: 1"=20'

DETAILS
SCALE: 1"=20'

BLOCK 306, LOT 13
THE VICTORIA XIII CONDOMINIUM
602 N. VICTORIA AVENUE

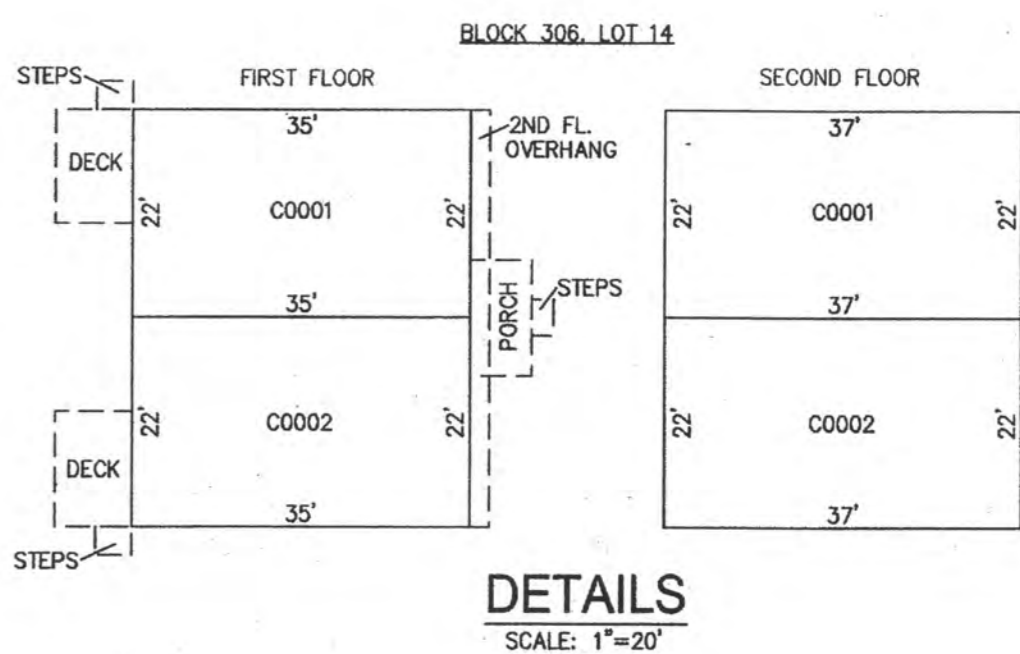
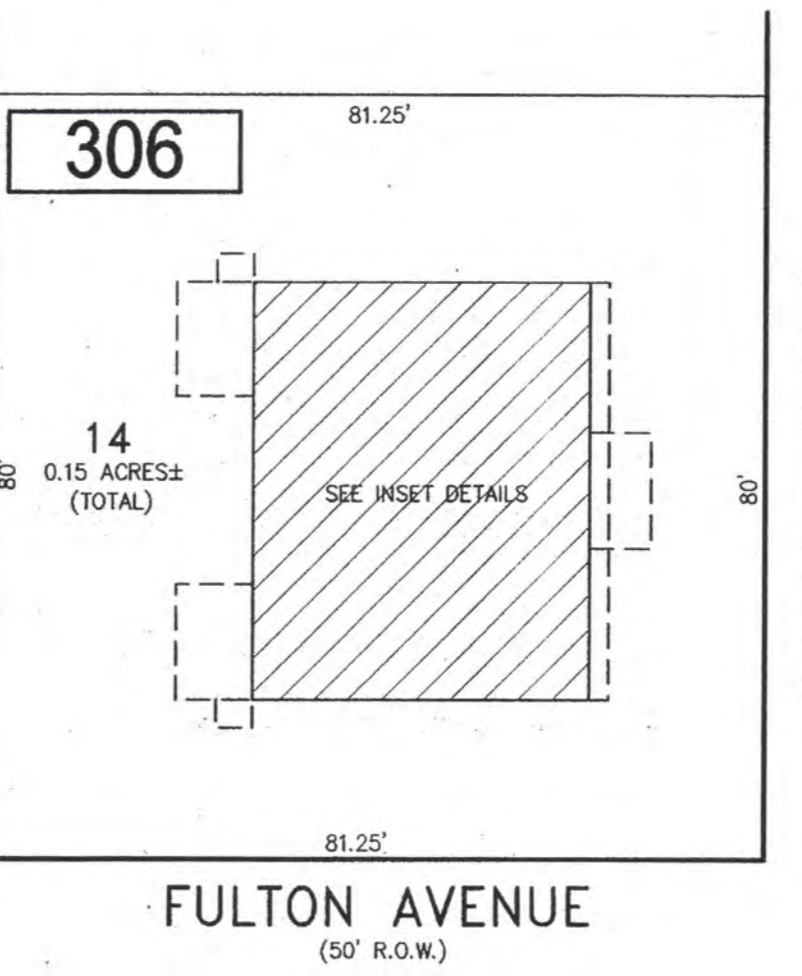


CONDO QUALIFIER	SQUARE FOOTAGE
C0001	1645 SF.
C0002	1645 SF.

PLAN
SCALE: 1"=20'

DETAILS
SCALE: 1"=20'

BLOCK 306, LOT 11
THE VICTORIA XI CONDOMINIUM
606 N. VICTORIA AVENUE



CONDO QUALIFIER	SQUARE FOOTAGE
C0001	1540 SF.
C0002	1540 SF.

PLAN
SCALE: 1"=20'

DETAILS
SCALE: 1"=20'

BLOCK 306, LOT 14
THE VICTORIA XIV CONDOMINIUM
600 N. VICTORIA AVENUE

BLOCK 306, LOT 9
BLOCK 306, LOT 10
BLOCK 306, LOT 11
BLOCK 306, LOT 12
BLOCK 306, LOT 13
BLOCK 306, LOT 14
SEE SHEET 50

NEW JERSEY DEPARTMENT OF THE TREASURY
DIVISION OF TAXATION
APPROVED AS A TAX MAP PURSUANT TO THE AUTHORITY OF
N.J.S.A. 54-1-15 AND N.J.S.A. 54-50-2
FOR THE DIRECTOR, DIVISION OF TAXATION
Charles Miller, CPA
John P. Miller, P.E., Chief Property Administrator
Shelby Kelly, CTA
Shelby Kelly, CTA, Principal Field Representative
DATE: JUL 20 2016 SERIAL NO. 1070

TAX MAP
CITY OF VENTNOR
ATLANTIC COUNTY NEW JERSEY
SCALE: NOTED DATE: 2-19-2015
CHARLES E. ADAMSON NJ PROFESSIONAL LAND SURVEYOR LIC. NO. 42627
REMINGTON, VERNICK & WALBERG ENGINEERS
24 GA 28048700
645 N. MAIN STREET, PLEASANTVILLE, N.J. 08232
(609) 645-7070, FAX (609) 645-7076
WEB SITE ADDRESS: WWW.RVW.COM
TO SHOW CONDITIONS AS OF 7-20-2016