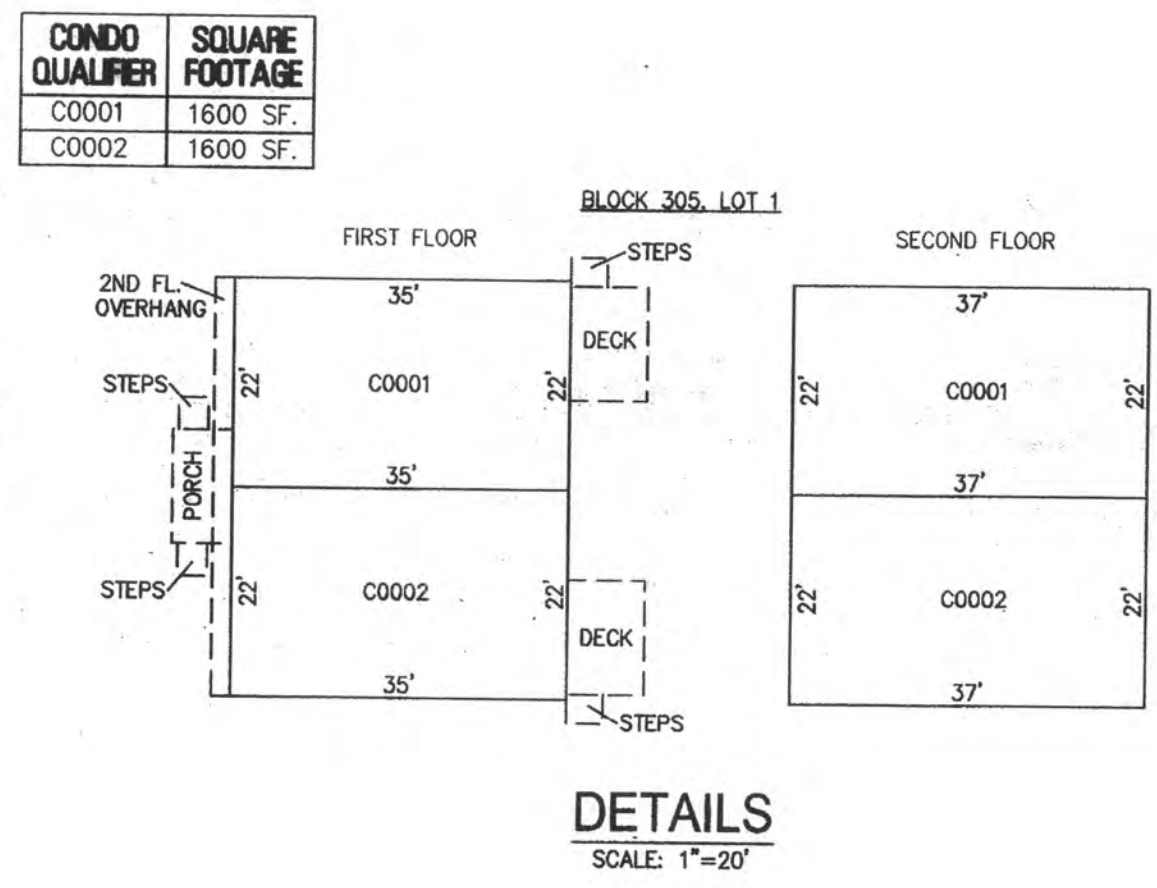
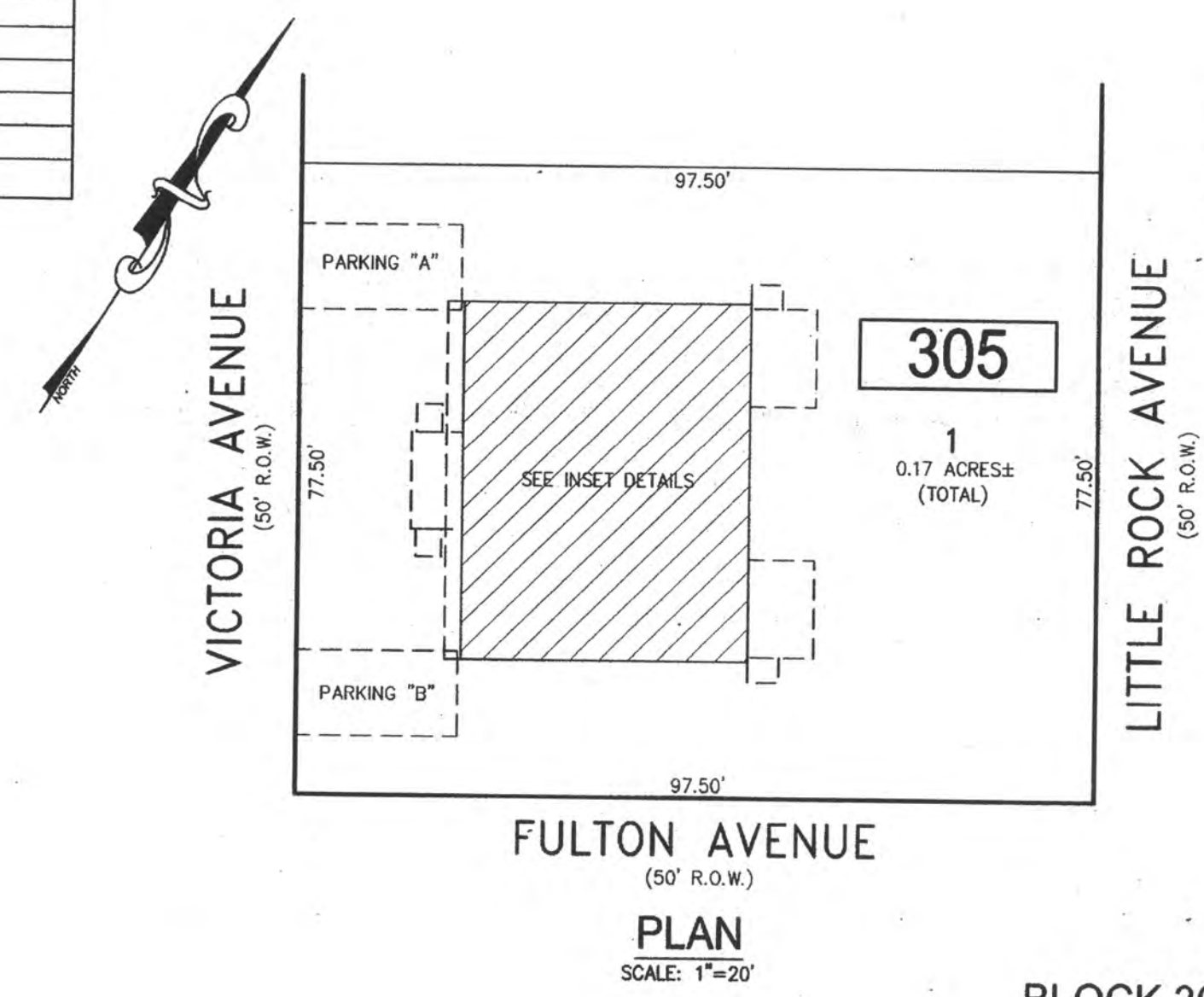
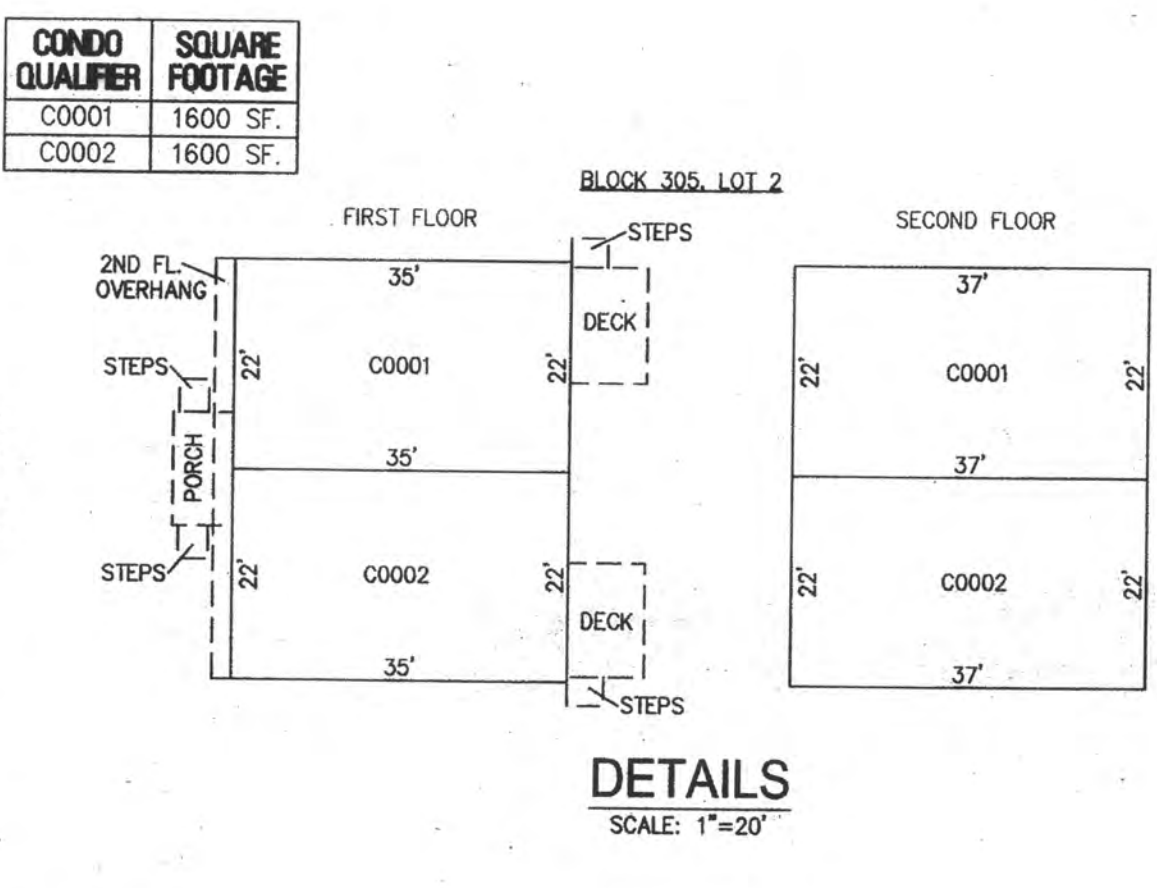
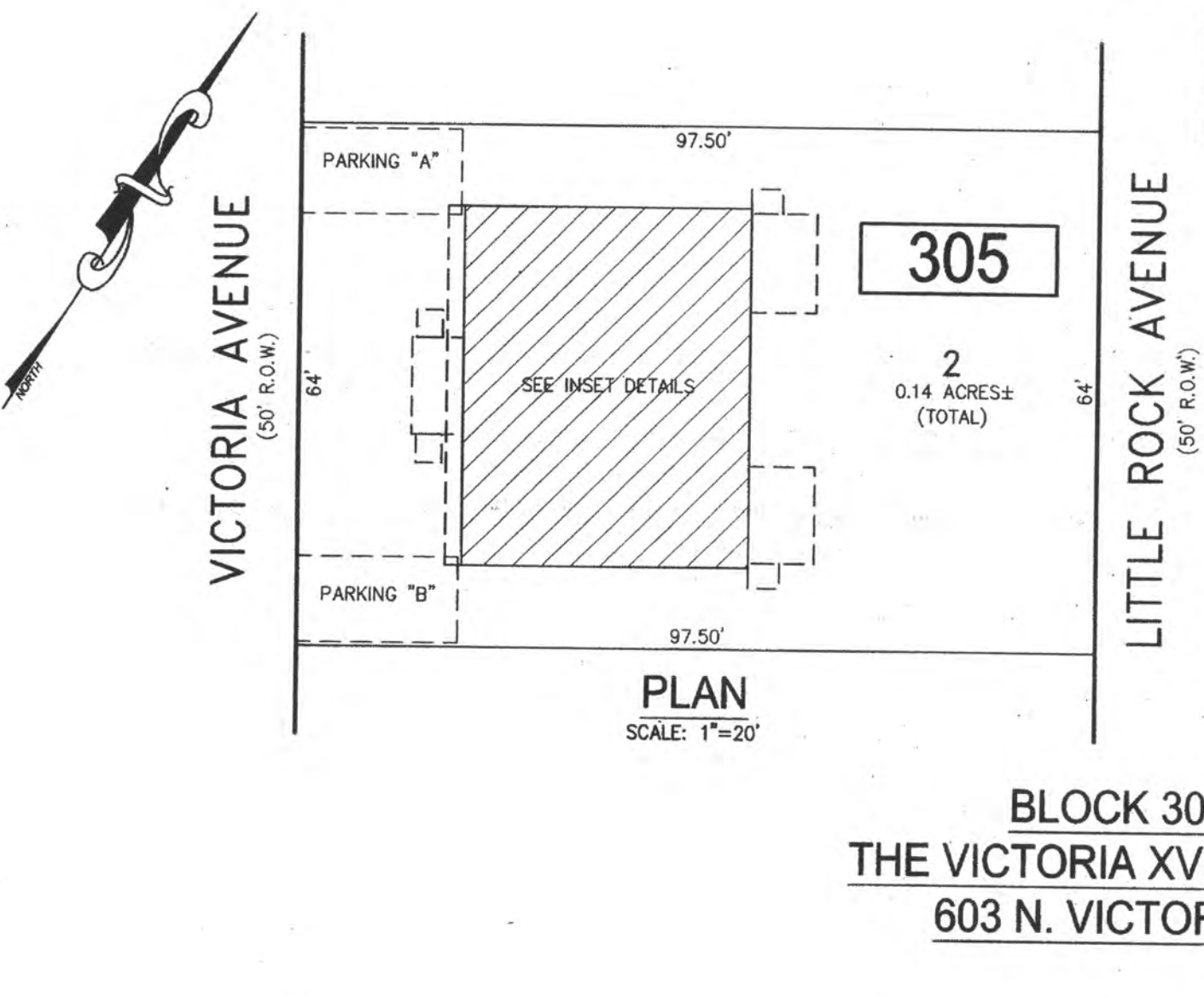


REVISIONS		
DATE	NAME	NO.

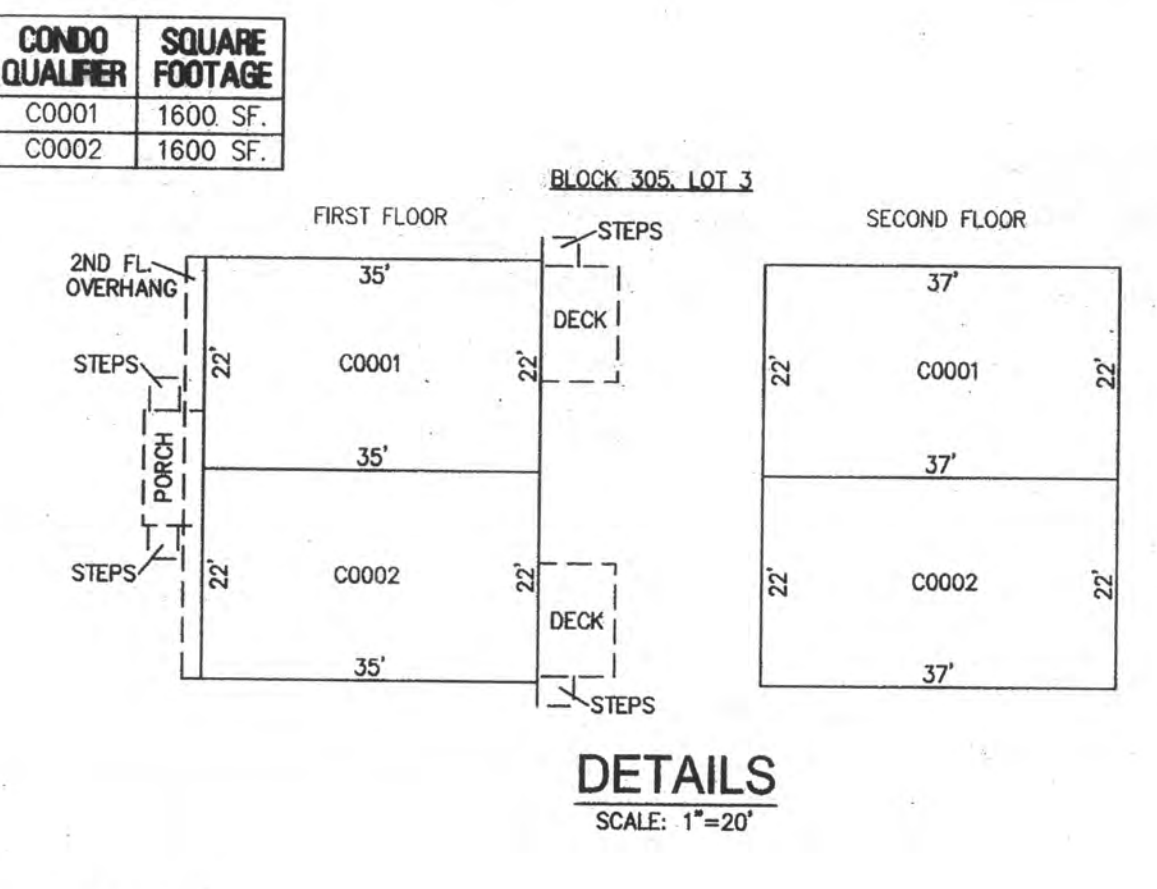
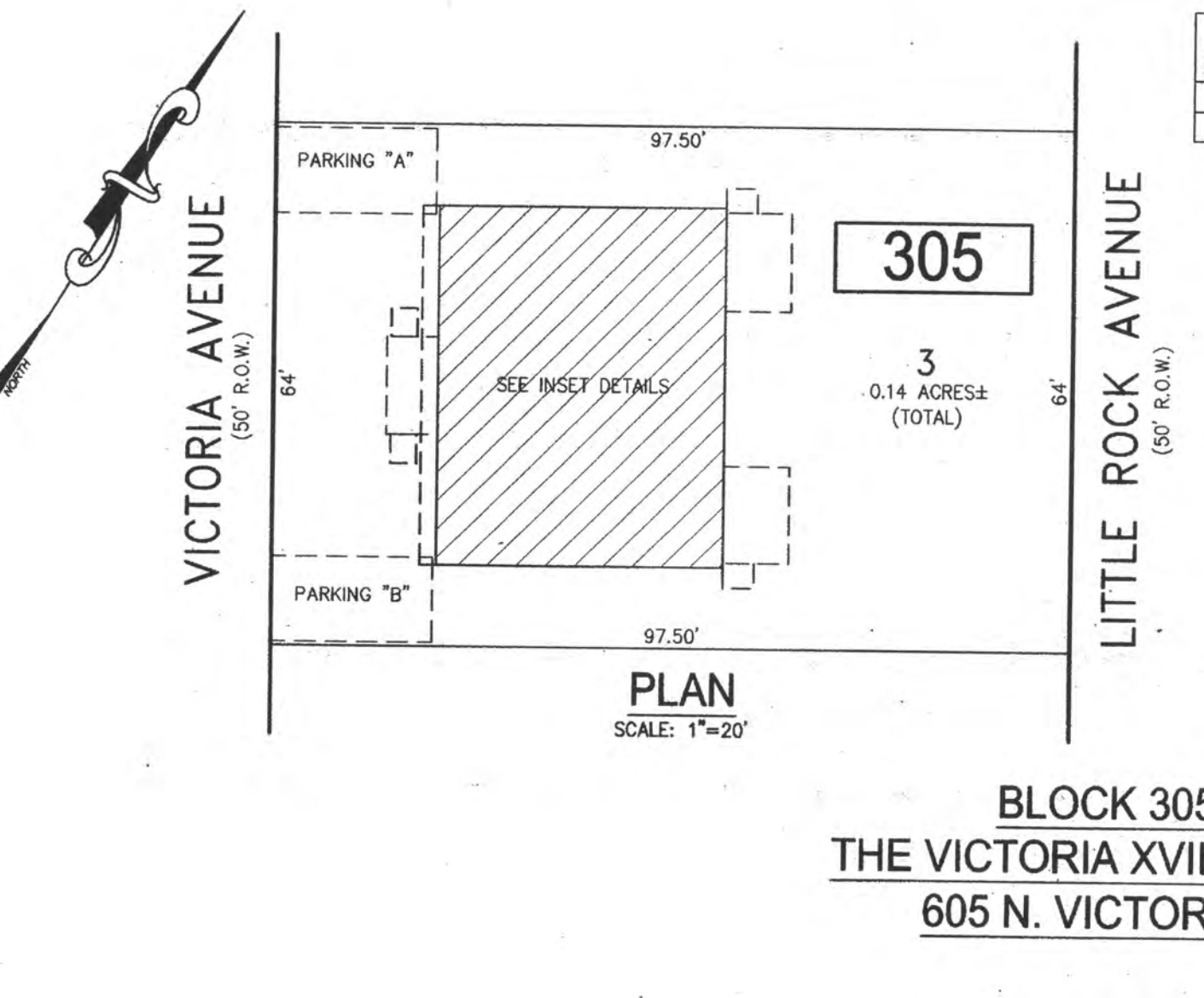
**NOTE:**  
THIS SHEET HAS BEEN DRAWN USING COMPUTER AIDED DRAFTING/DESIGN (CAD/D) AND COORDINATE GEOMETRY (COGO).



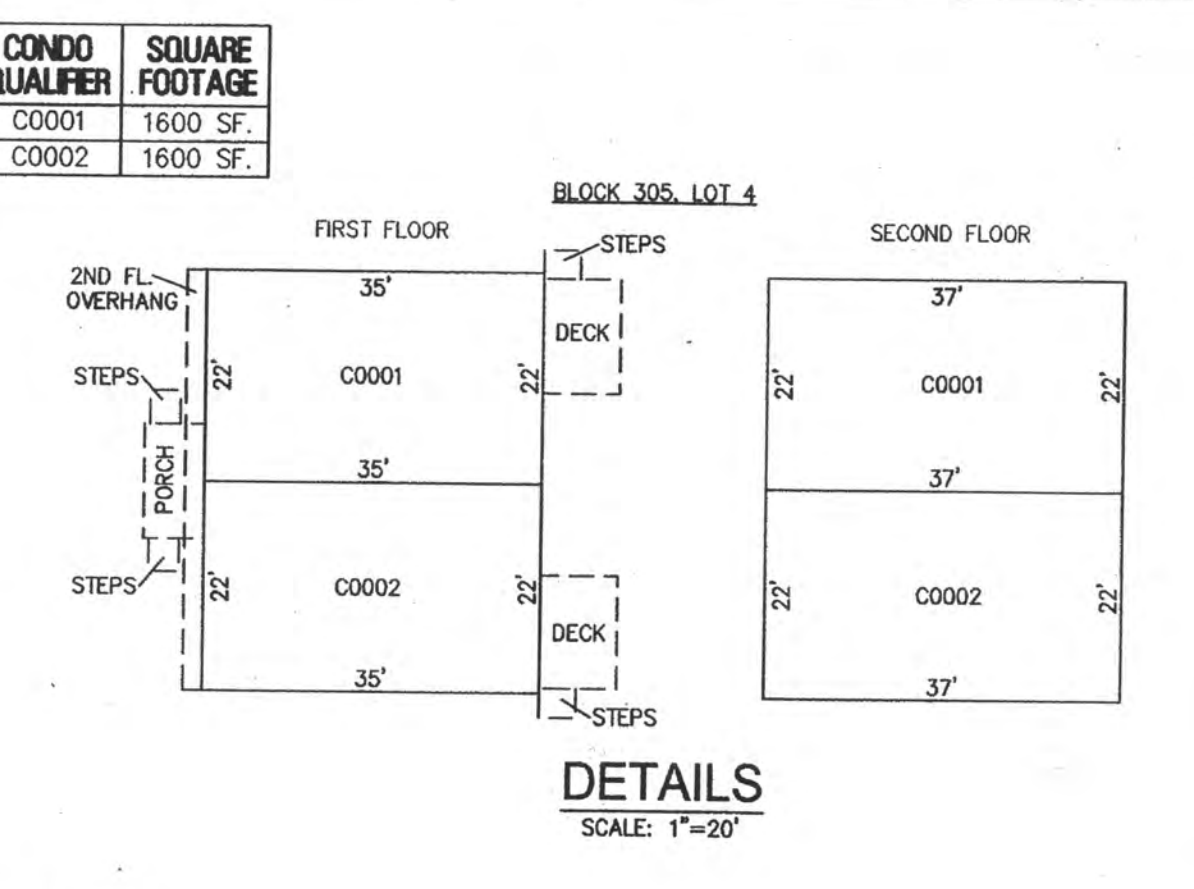
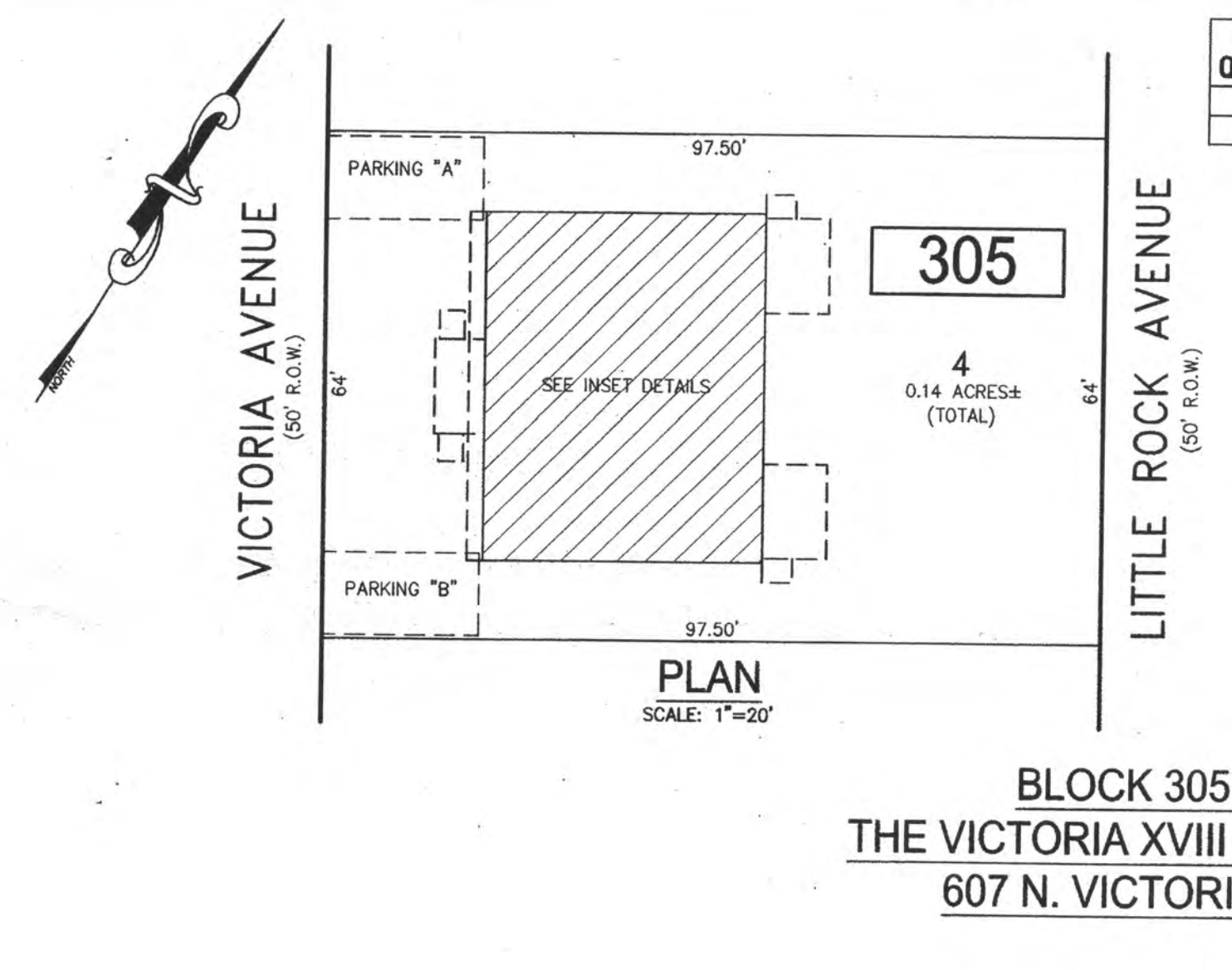
**BLOCK 305, LOT 1**  
**THE VICTORIA XV CONDOMINIUM**  
601 N. VICTORIA AVENUE



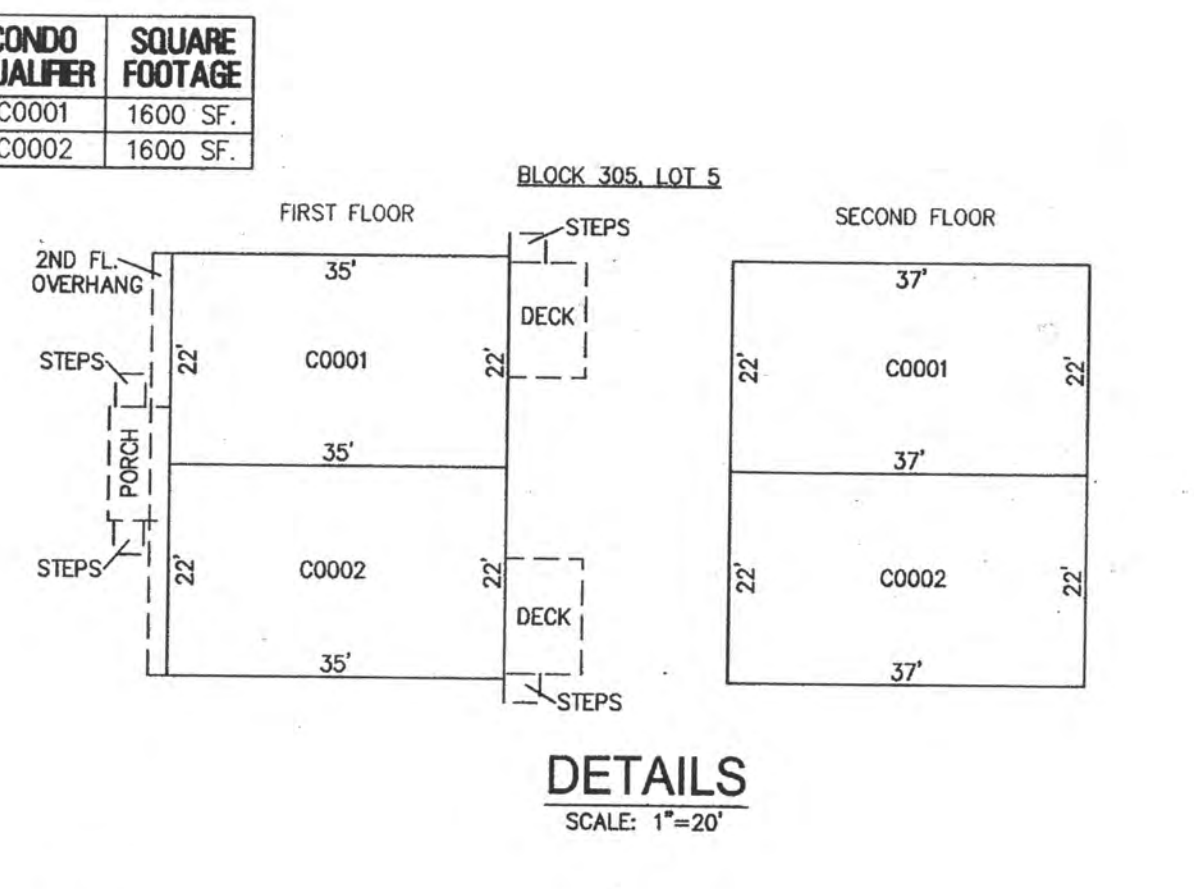
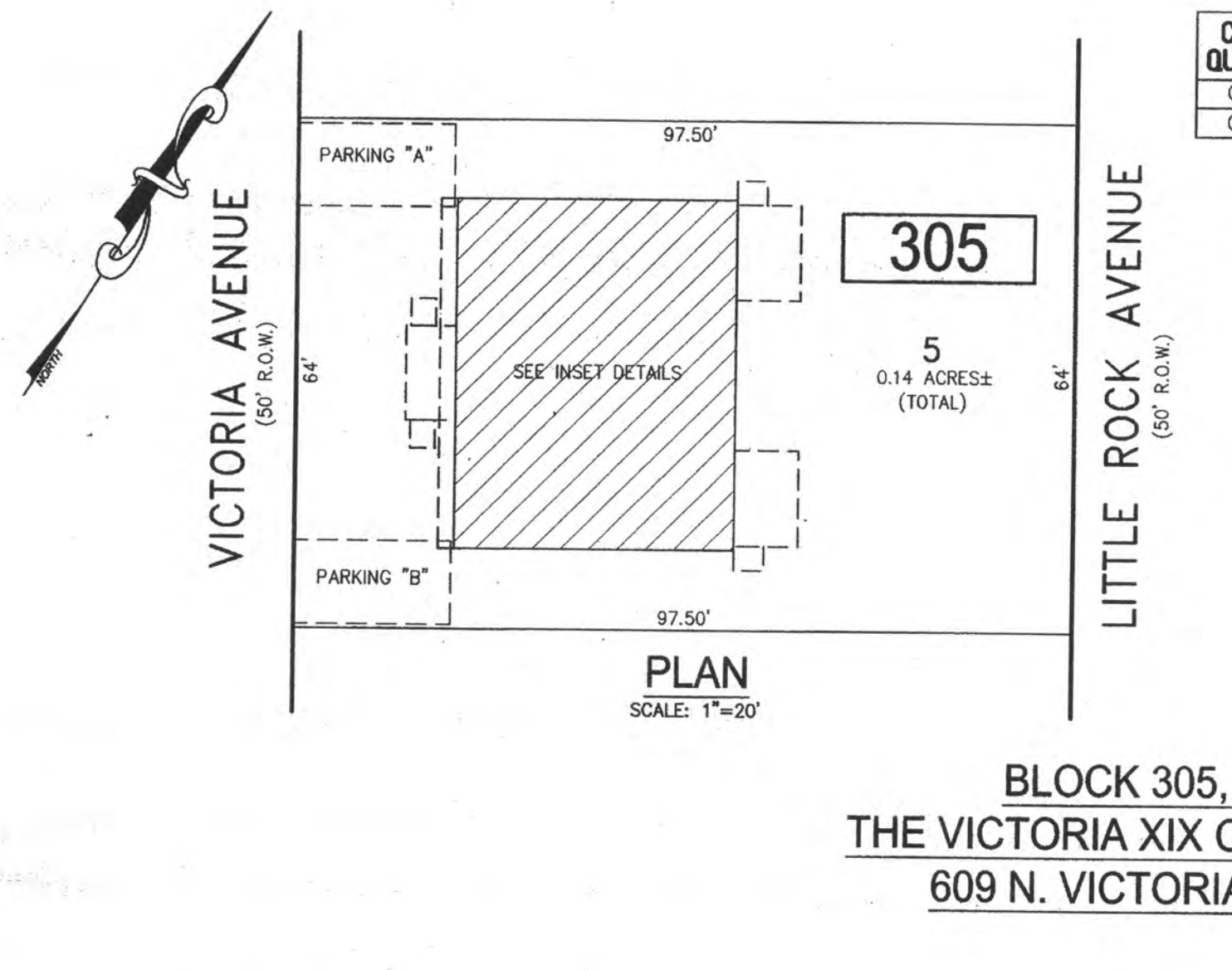
**BLOCK 305, LOT 2**  
**THE VICTORIA XVI CONDOMINIUM**  
603 N. VICTORIA AVENUE



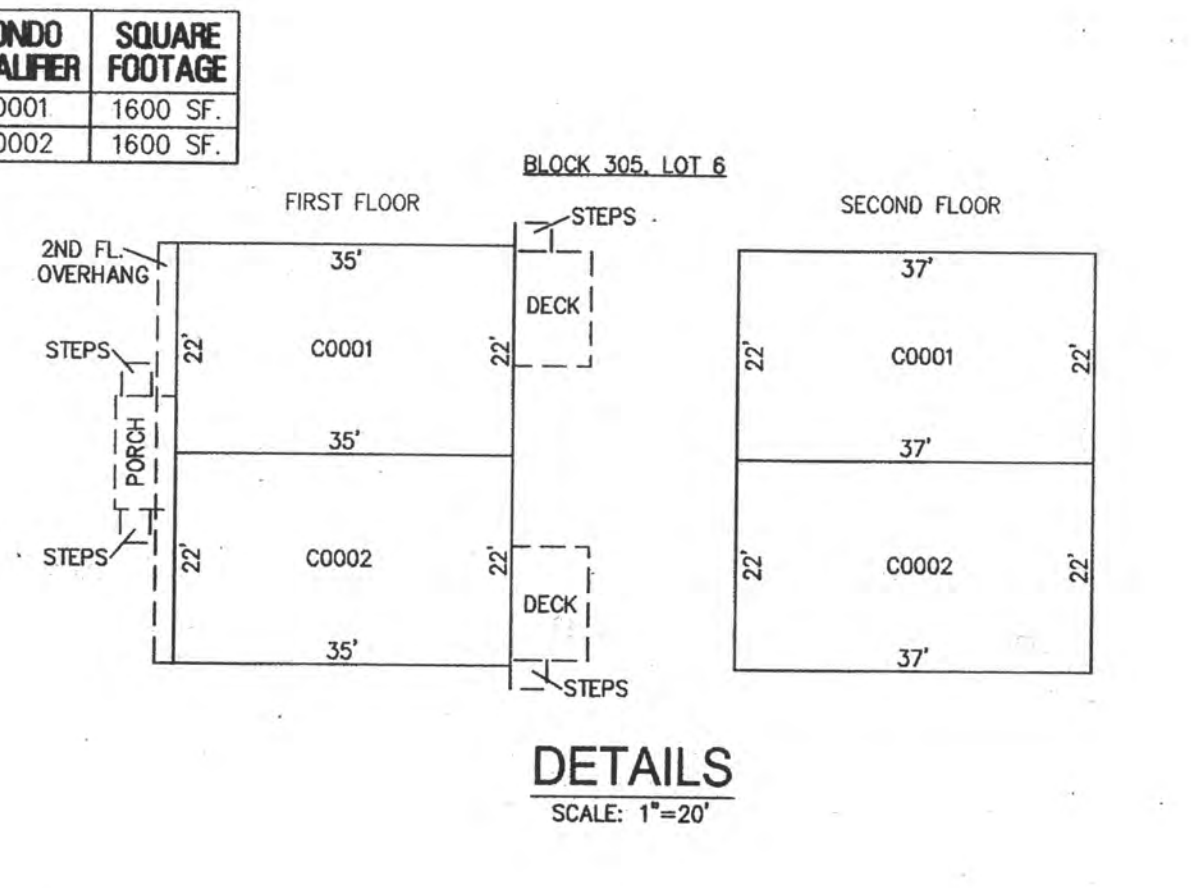
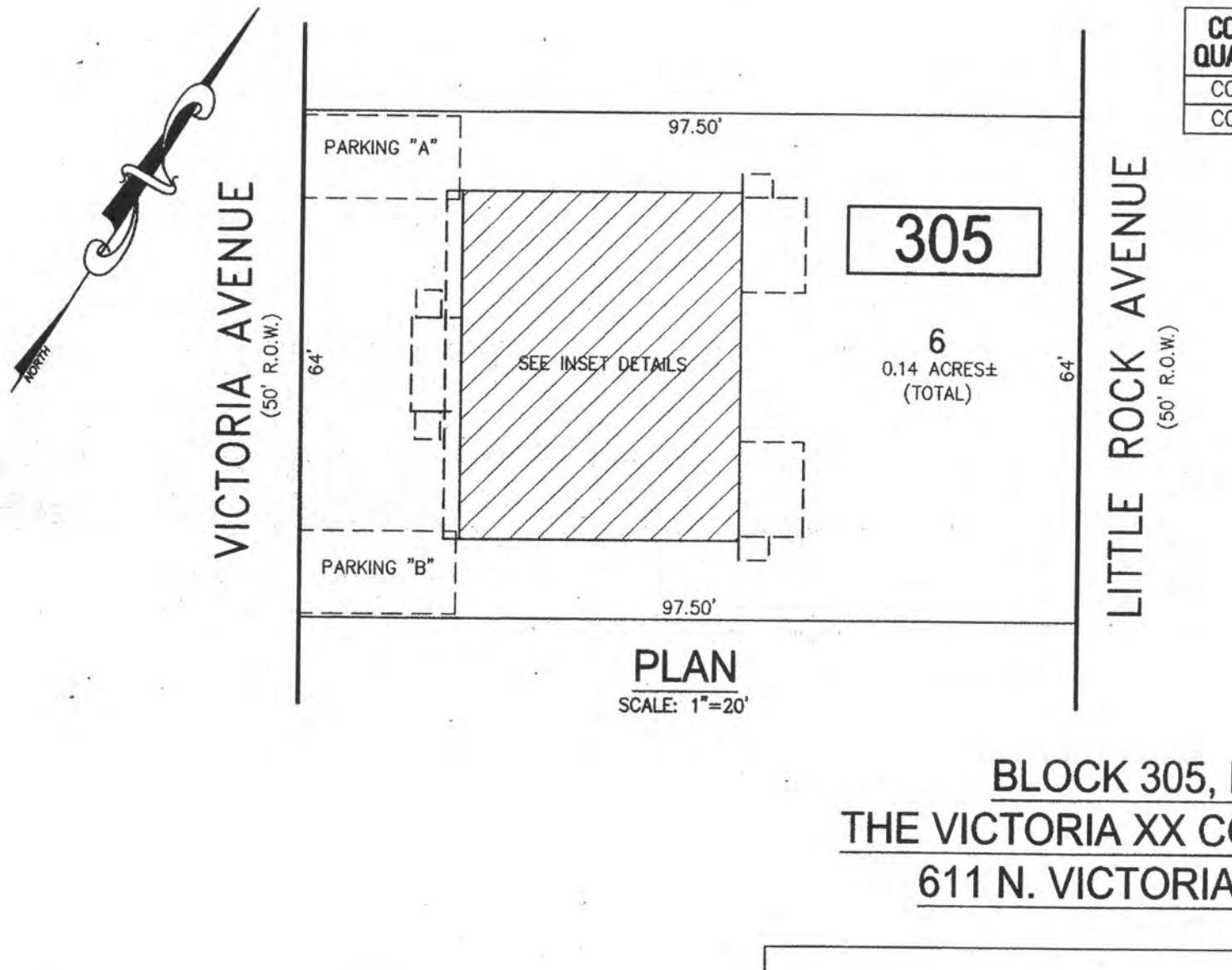
**BLOCK 305, LOT 3**  
**THE VICTORIA XVII CONDOMINIUM**  
605 N. VICTORIA AVENUE



**BLOCK 305, LOT 4**  
**THE VICTORIA XVIII CONDOMINIUM**  
607 N. VICTORIA AVENUE



**BLOCK 305, LOT 5**  
**THE VICTORIA XIX CONDOMINIUM**  
609 N. VICTORIA AVENUE



**BLOCK 305, LOT 6**  
**THE VICTORIA XX CONDOMINIUM**  
611 N. VICTORIA AVENUE

- BLOCK 305, LOT 1
- BLOCK 305, LOT 2
- BLOCK 305, LOT 3
- BLOCK 305, LOT 4
- BLOCK 305, LOT 5
- BLOCK 305, LOT 6
- SEE SHEET 50

NEW JERSEY DEPARTMENT OF THE TREASURY  
DIVISION OF TAXATION  
APPROVED AS A TAX MAP PURSUANT TO THE AUTHORITY OF  
N.J.S.A. 54:1-16 AND N.J.S.A. 54:29-1  
FOR THE DIRECTOR, DIVISION OF TAXATION  
*Shelly Miller DA*  
*Shelly Miller, CTA*  
DATE JUL 20 2016 SERIAL NO. 1070

**TAX MAP**  
**CITY OF VENTNOR**  
ATLANTIC COUNTY NEW JERSEY  
SCALE: NOTED DATE: 2-19-2015  
**CHARLES E. ADAMSON NJ PROFESSIONAL LAND SURVEYOR LIC. NO. 42827**  
**REMINGTON, VERNICK & WALBERG ENGINEERS**  
24 GA 28048700  
645 N. MAIN STREET, PLEASANTVILLE, N.J. 08232  
(609) 645-700, FAX (609) 645-7076  
WEB SITE ADDRESS: WWW.RVW.COM  
TO SHOW CONDITIONS AS OF 7-20-2016