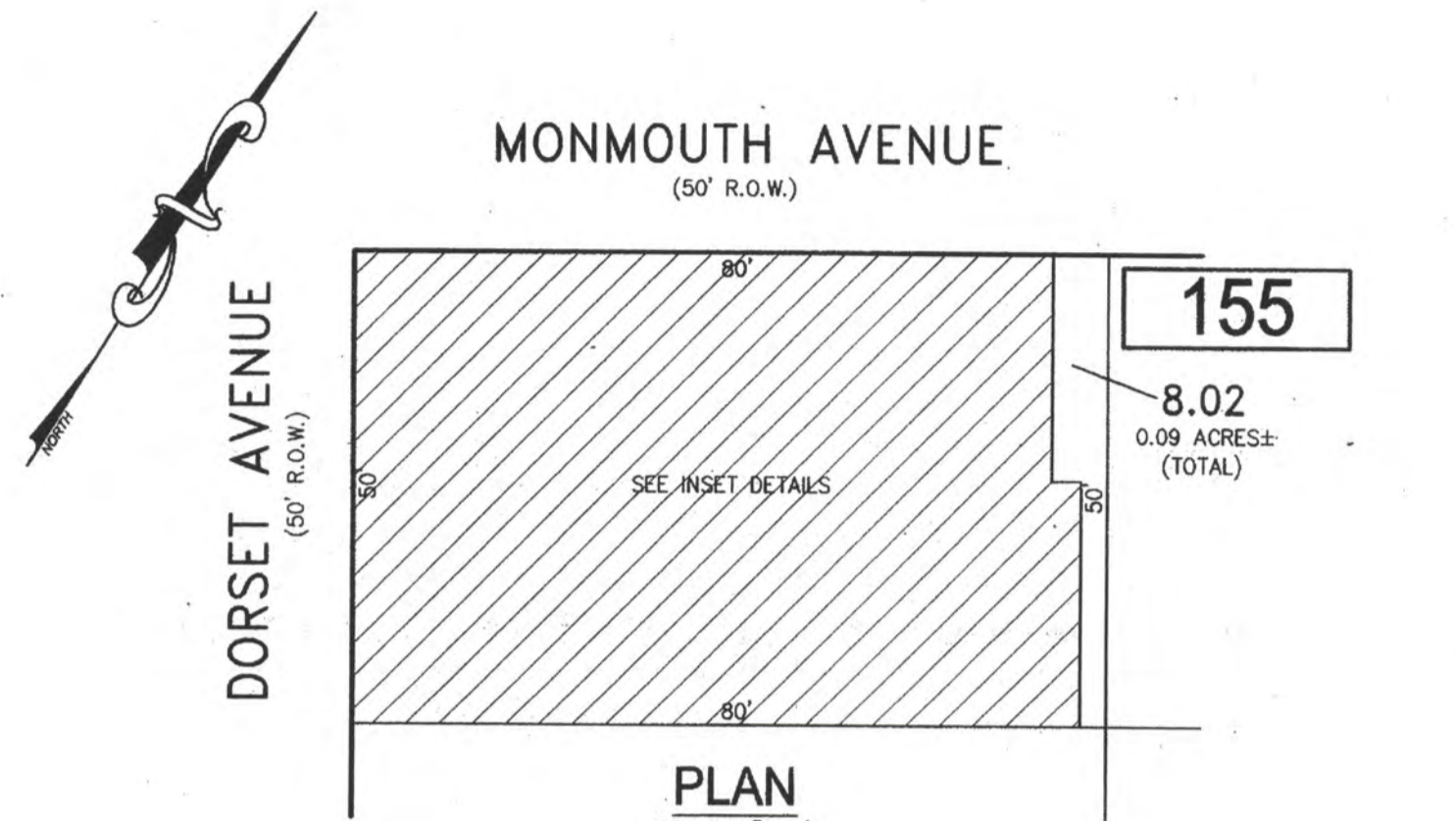
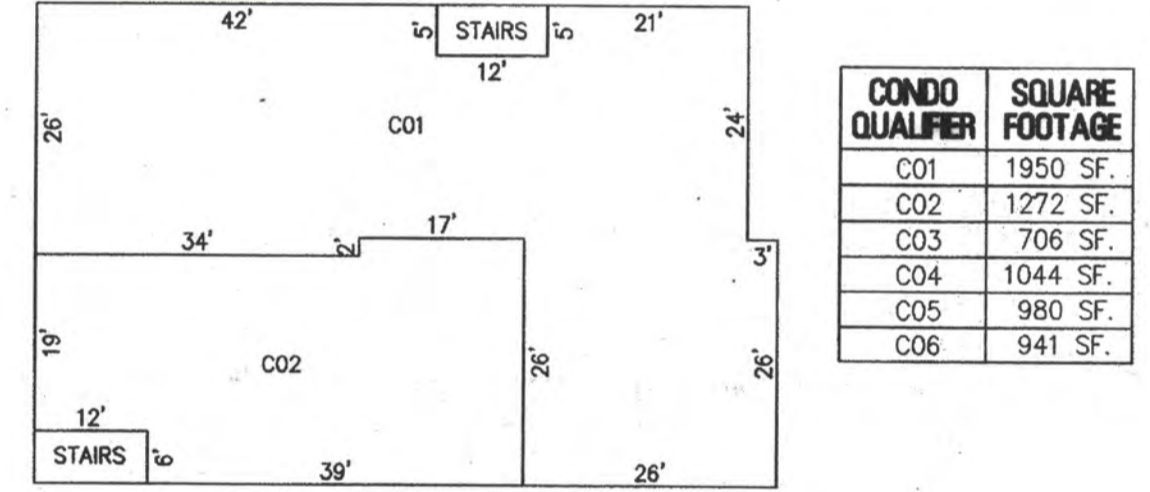


REVISIONS		
DATE	NAME	NO.

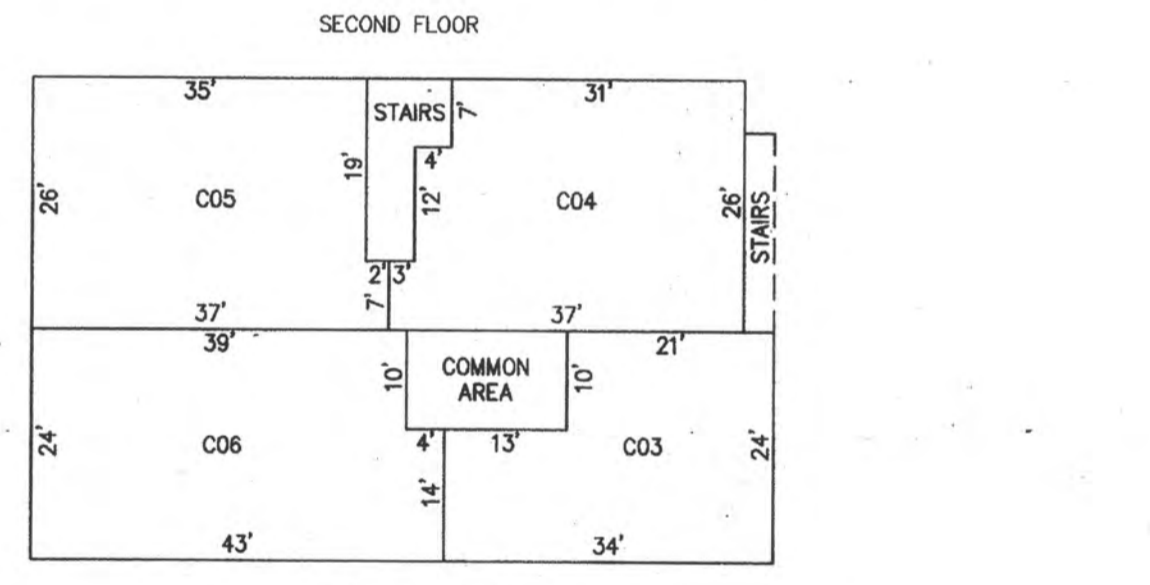
NOTE:
THIS SHEET HAS BEEN DRAWN USING COMPUTER AIDED DRAFTING/DESIGN (CAD/D) AND COORDINATE GEOMETRY (COGO).



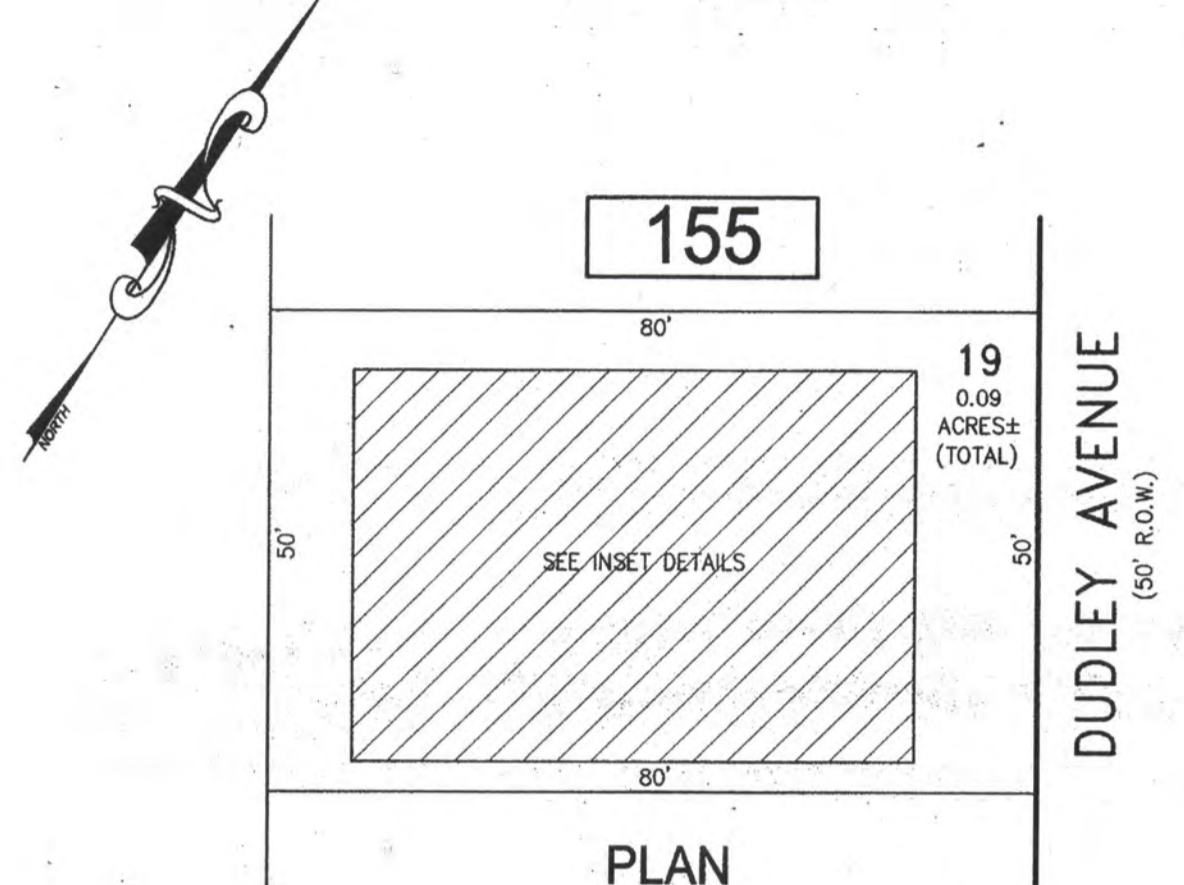
PLAN
SCALE: 1"=20'
BLOCK 155, LOT 8.02
FIRST FLOOR



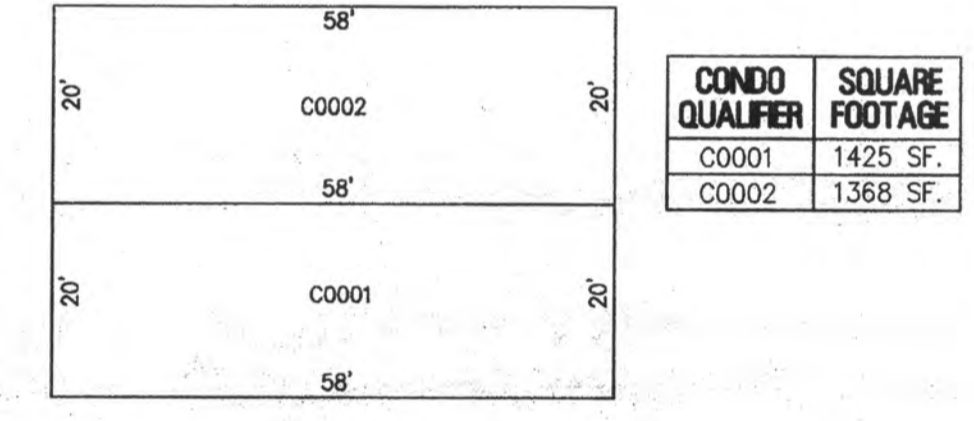
CONDO QUALIFIER	SQUARE FOOTAGE
C01	1950 SF.
C02	1272 SF.
C03	706 SF.
C04	1044 SF.
C05	980 SF.
C06	941 SF.



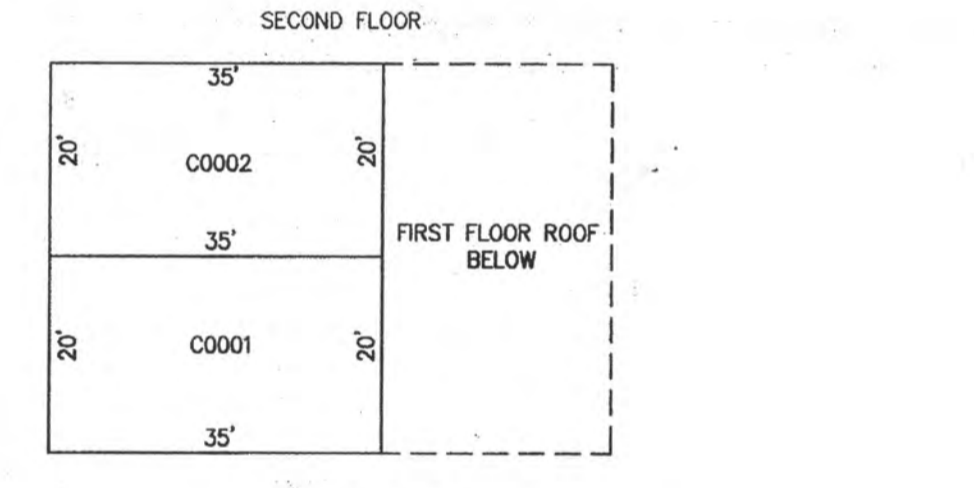
DETAILS
SCALE: 1"=20'
BLOCK 155, LOT 8.02
139-141 NORTH DORSET CONDOMINIUM



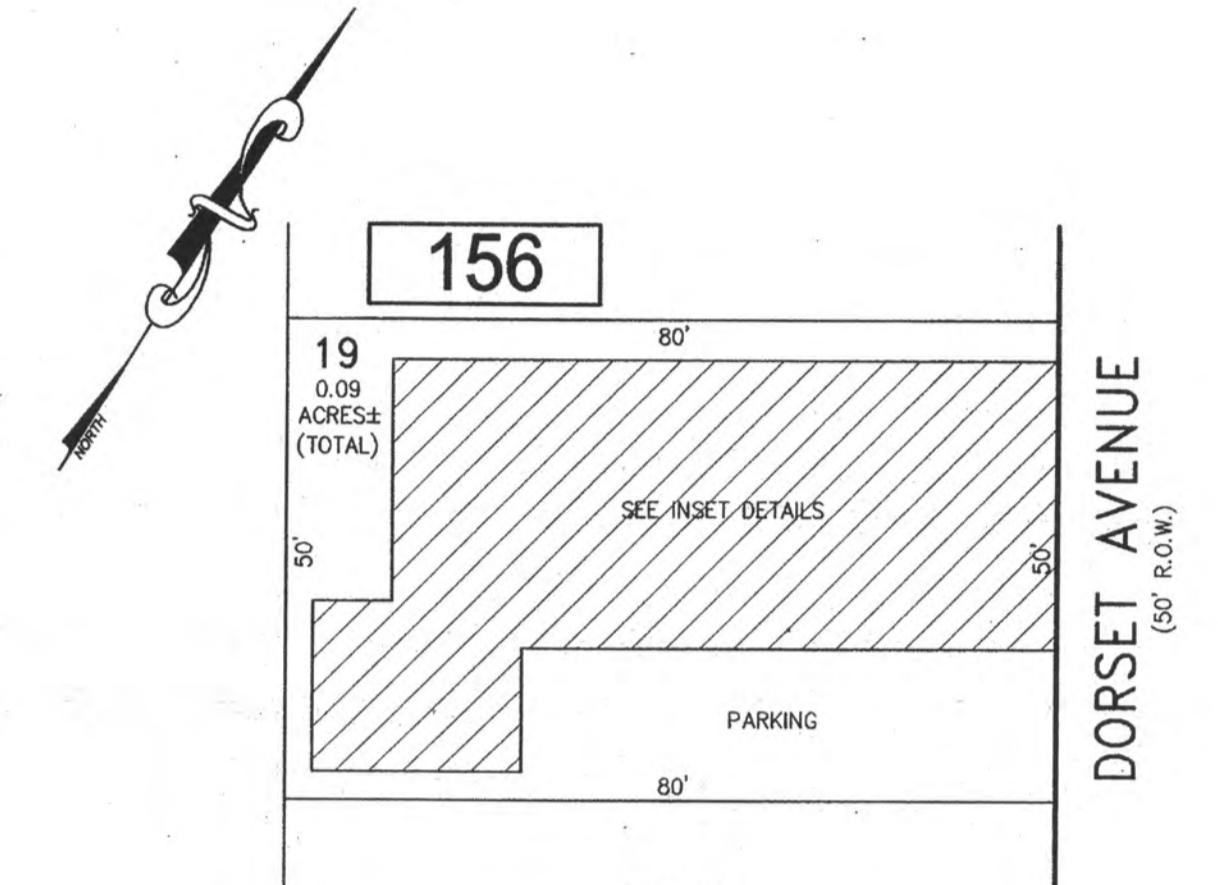
PLAN
SCALE: 1"=20'
BLOCK 155, LOT 19
FIRST FLOOR



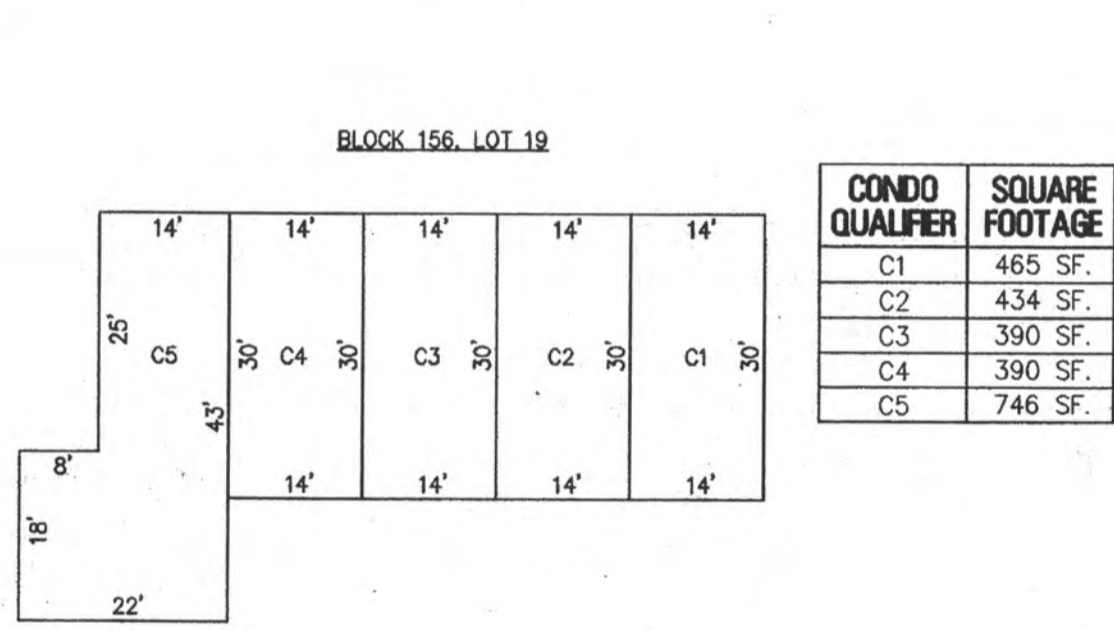
CONDO QUALIFIER	SQUARE FOOTAGE
C0001	1425 SF.
C0002	1368 SF.



DETAILS
SCALE: 1"=20'
BLOCK 155, LOT 19
110-112 NORTH DUDLEY AVENUE CONDOMINIUM



PLAN
SCALE: 1"=20'
BLOCK 156, LOT 19



CONDO QUALIFIER	SQUARE FOOTAGE
C1	465 SF.
C2	434 SF.
C3	390 SF.
C4	390 SF.
C5	746 SF.

DETAILS
SCALE: 1"=20'
BLOCK 156, LOT 19
BLUE WATER CONDOMINIUM
104 NORTH DORSET AVENUE

BLOCK 155, LOT 8.02
BLOCK 155, LOT 19
BLOCK 156, LOT 19
SEE SHEET 26

NEW JERSEY DEPARTMENT OF THE TREASURY
DIVISION OF TAXATION
APPROVED AS A TAX MAP PURSUANT TO THE AUTHORITY OF
N.J.S.A. 54:1-41 AND 54:1-42
FOR THE DIRECTOR, DIVISION OF REVENUE
Clay Miller CTA
Shelly Kelly CTA
Shelly Kelly, CTA, Principal Field Representative
DATE: JUL 20 2016 SERIAL NO. F1070

TAX MAP
CITY OF VENTNOR
ATLANTIC COUNTY NEW JERSEY
SCALE: NOTED DATE: 2-19-2015
CHARLES E. ADAMSON NJ PROFESSIONAL LAND SURVEYOR LIC. NO. 42627
RVW
REMINGTON, VERNICK & WALBERG ENGINEERS
24 GA 28048700
845 N. MAIN STREET, PLEASANTVILLE, NJ 08232
(609) 645-780, FAX (609) 645-7076
WEB SITE ADDRESS WWW.RVW.COM
TO SHOW CONDITIONS AS OF 7-20-2016