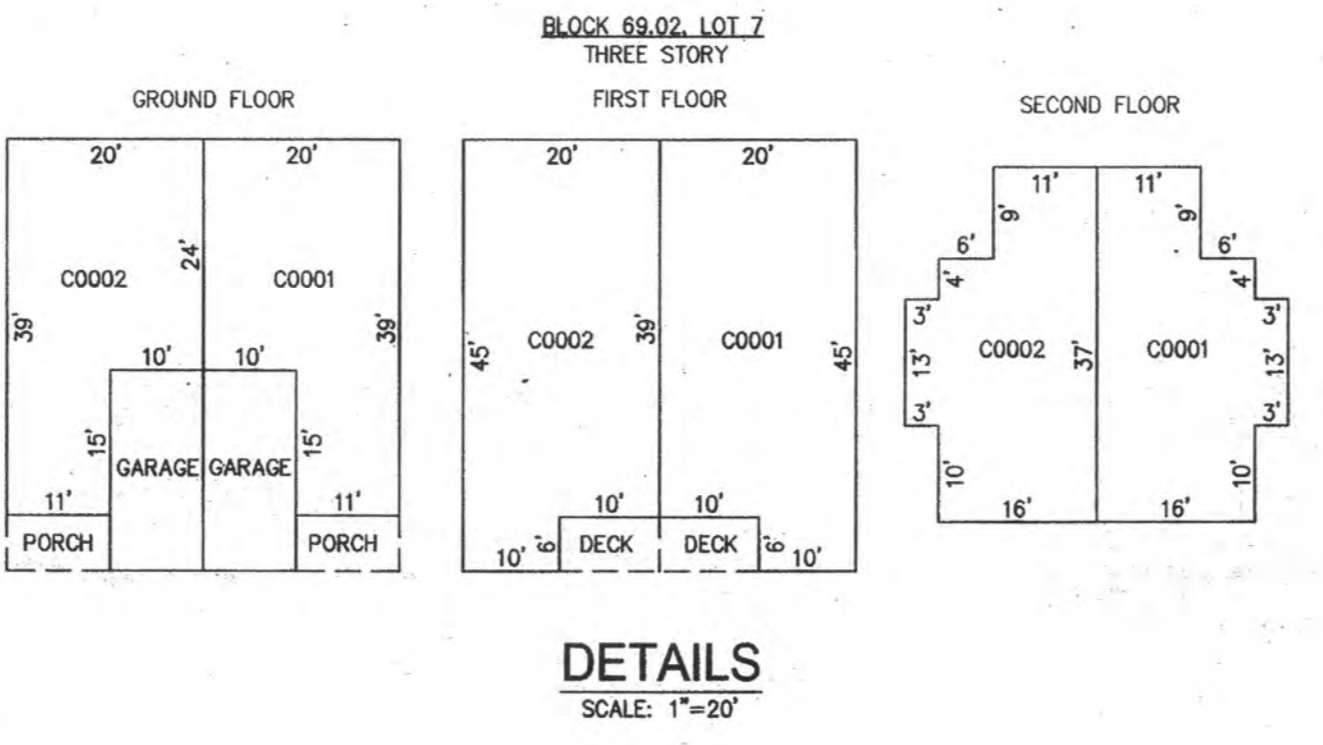
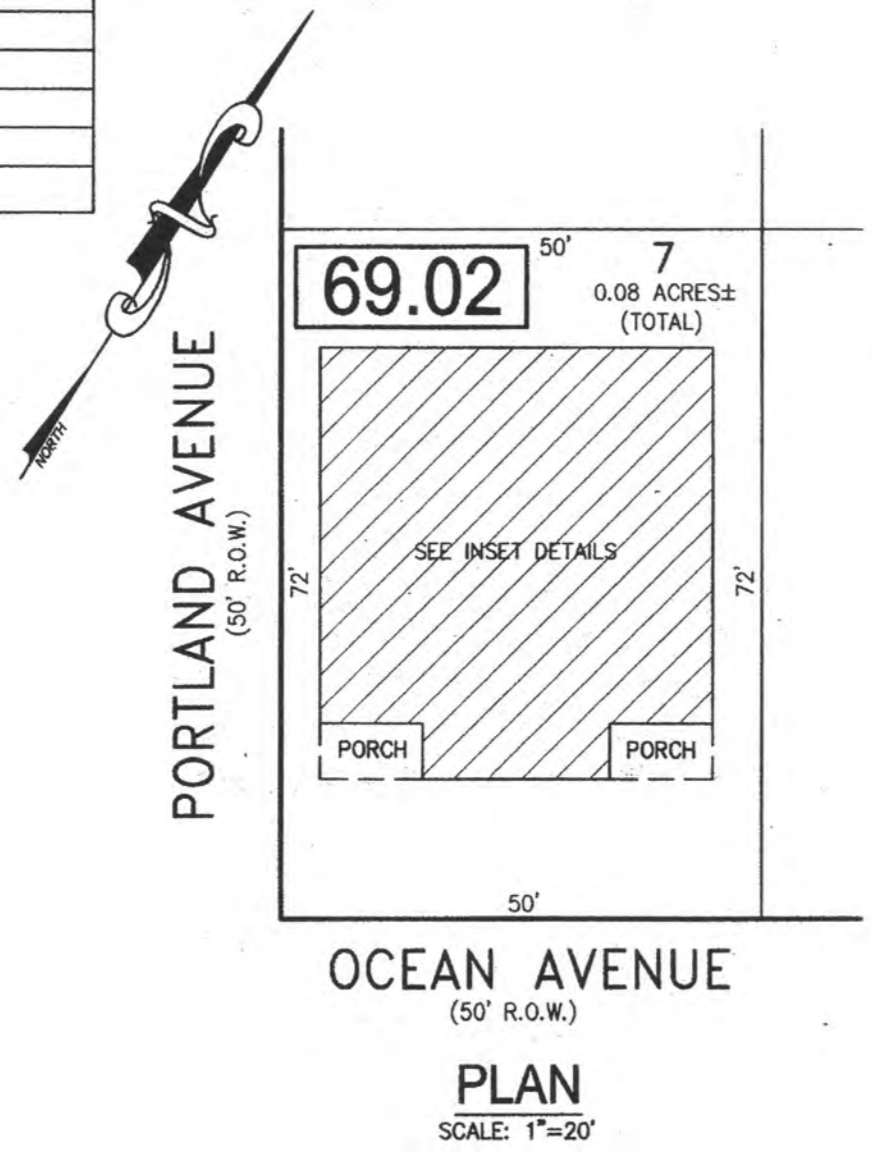
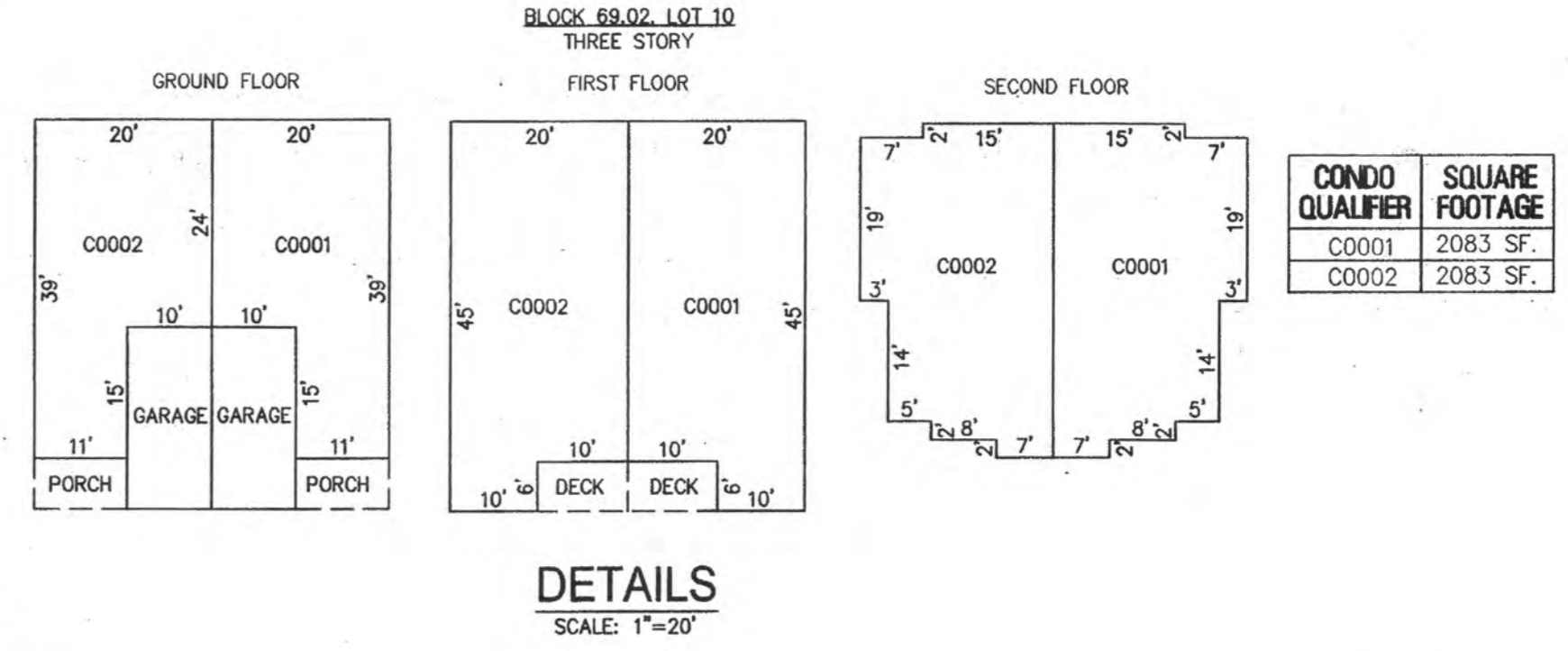


REVISIONS		
DATE	NAME	NO.

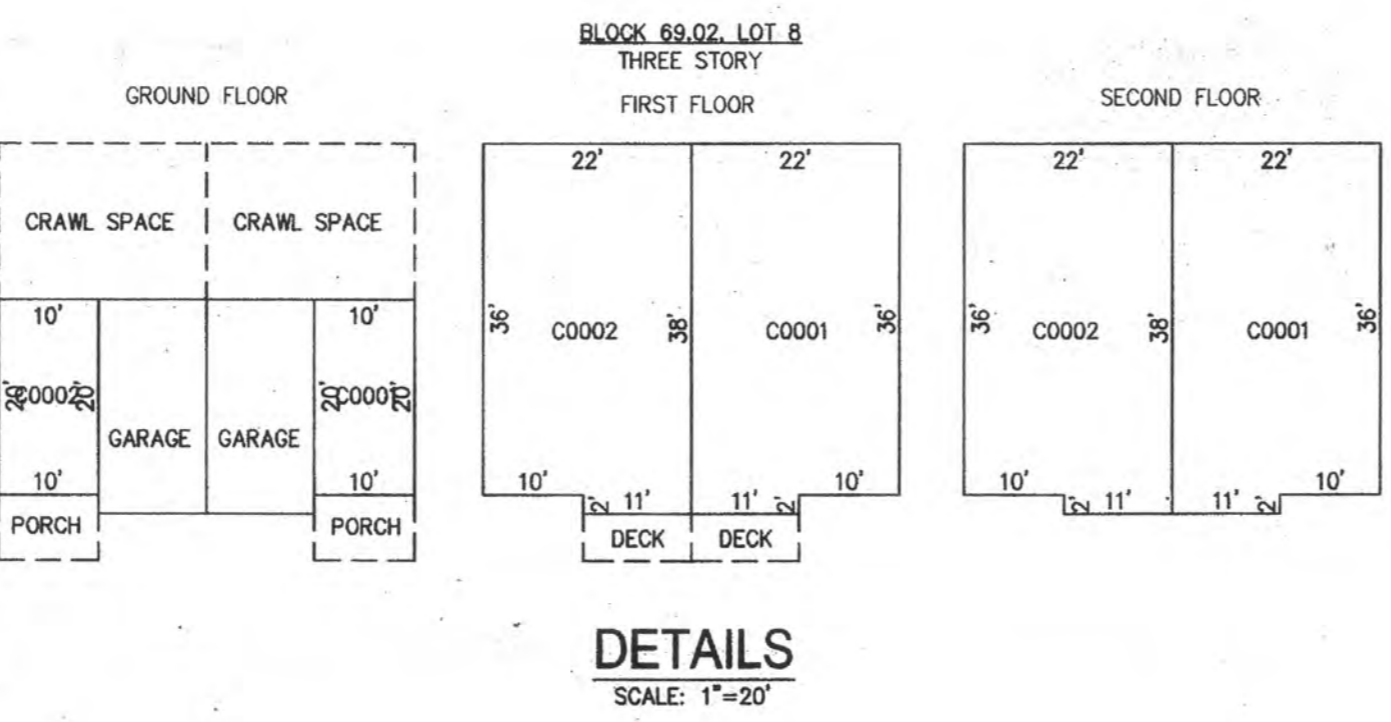
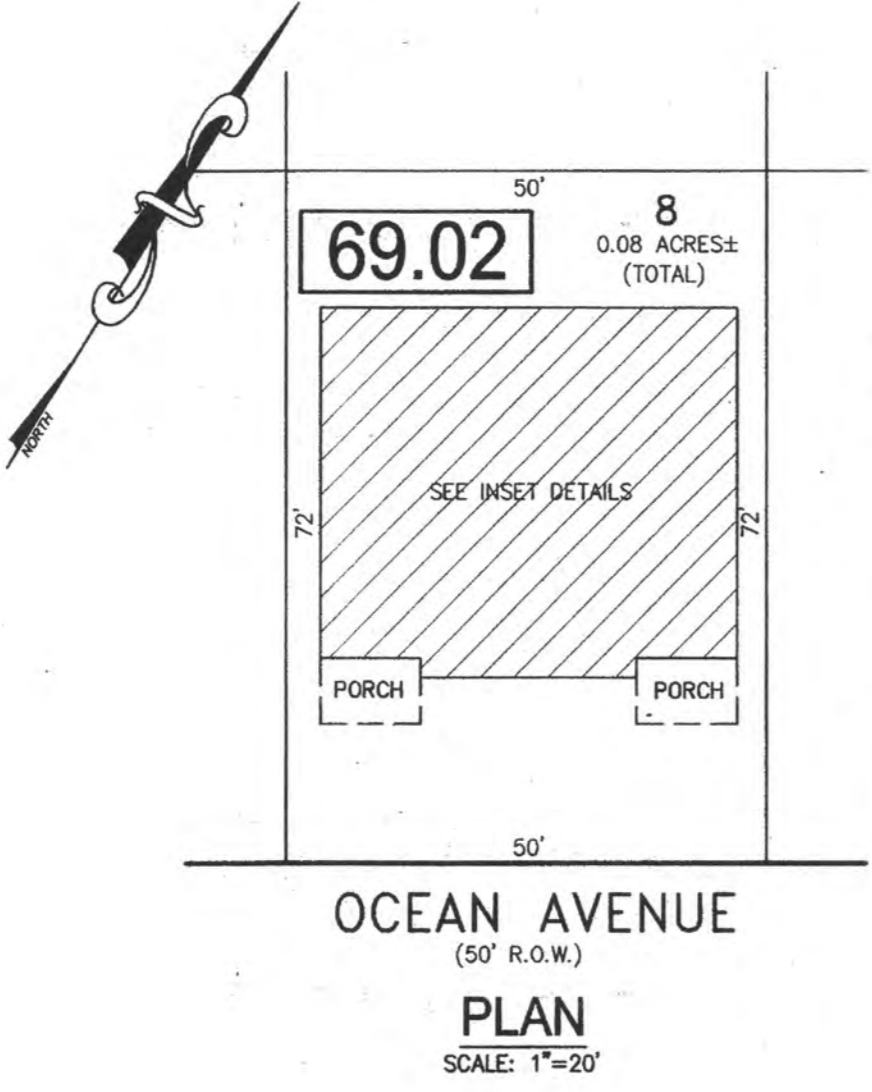
NOTE:
THIS SHEET HAS BEEN DRAWN USING COMPUTER AIDED DRAFTING/DESIGN (CAD/D) AND COORDINATE GEOMETRY (COGO).



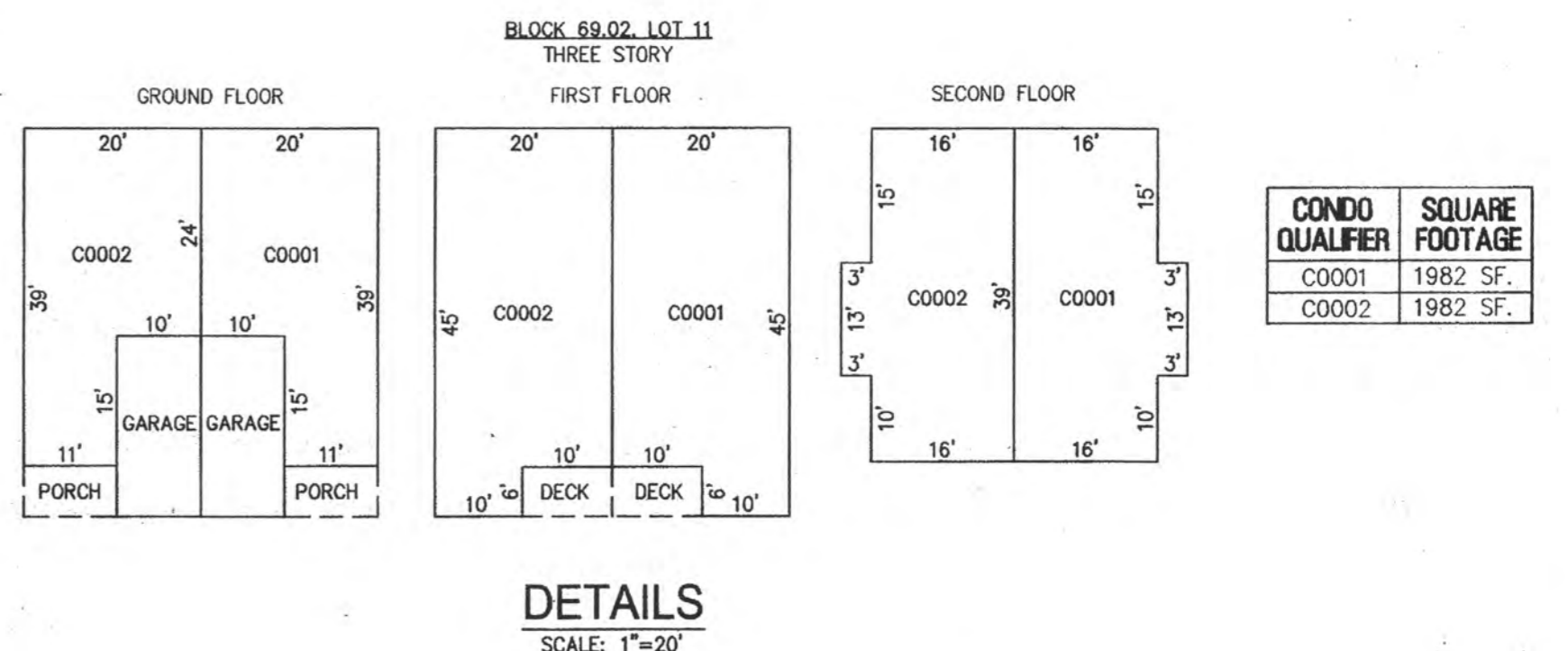
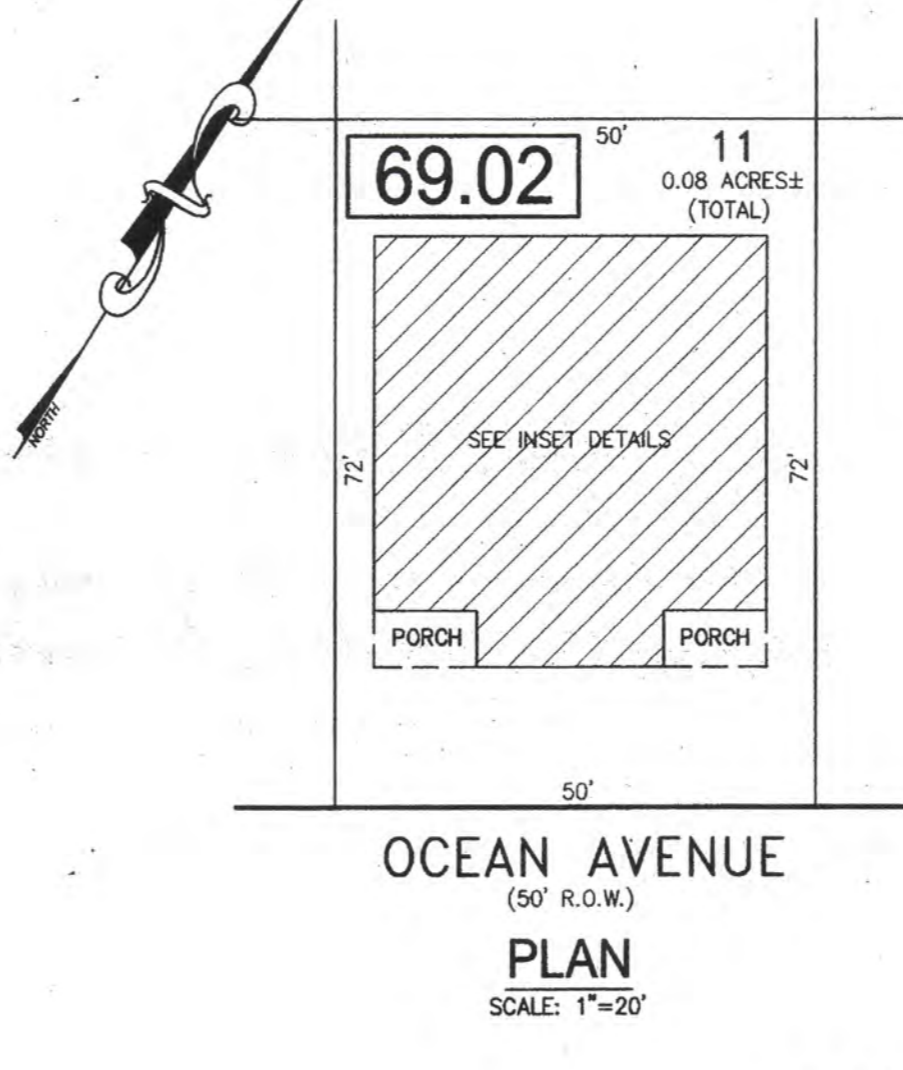
BLOCK 69.02, LOT 7
OCEAN VILLA 6321-6323 OCEAN AVENUE CONDOMINIUM



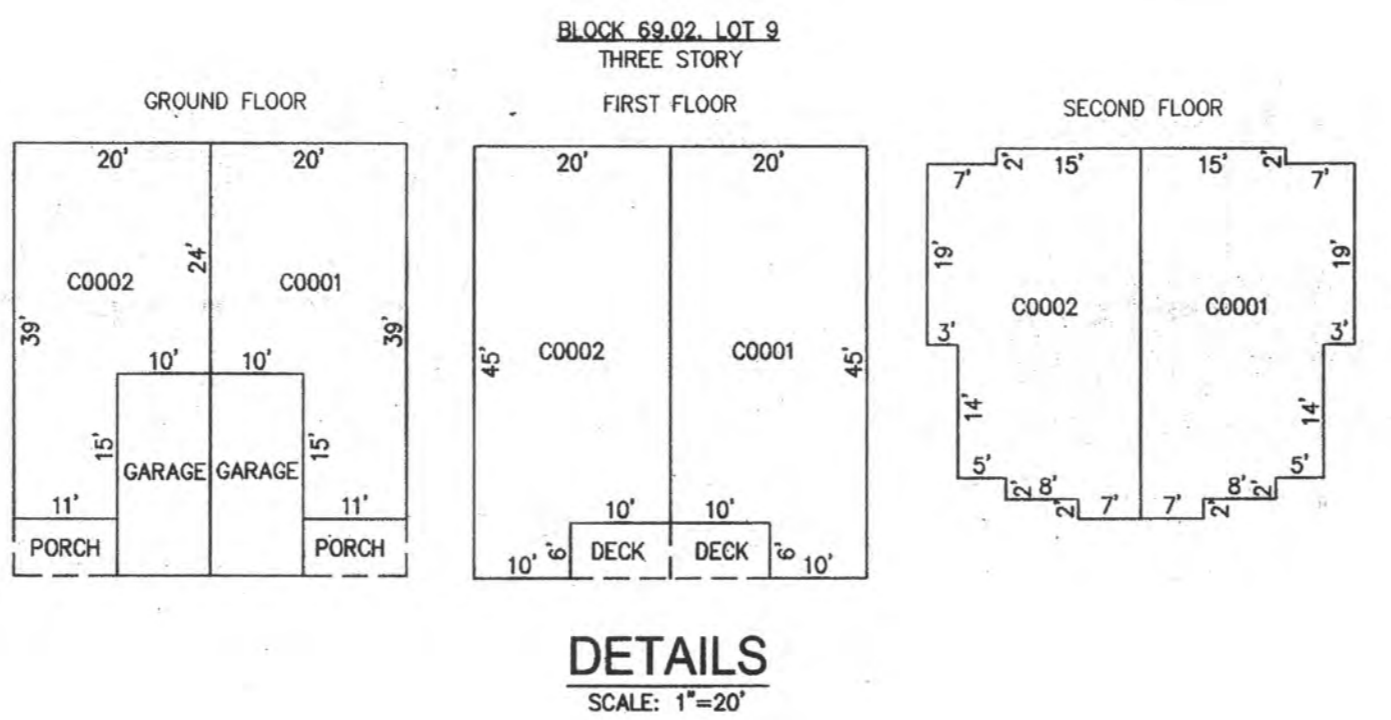
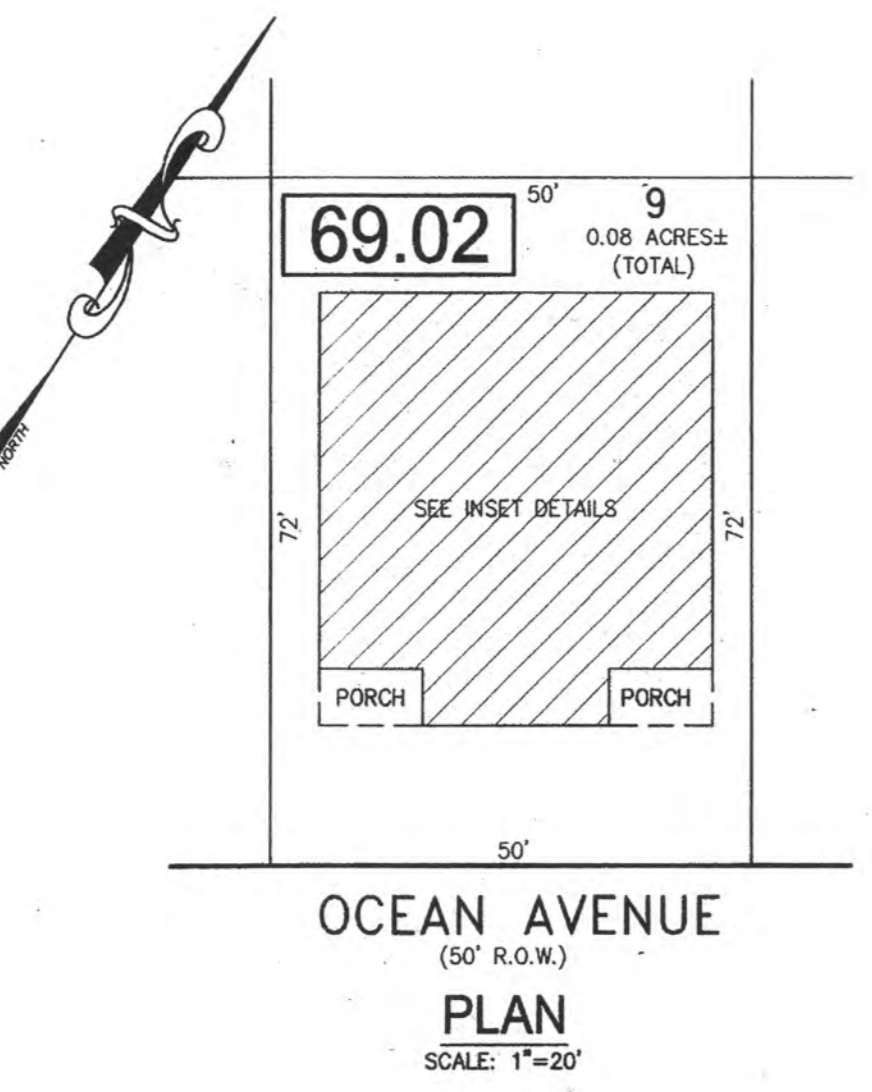
BLOCK 69.02, LOT 10
OCEAN VILLA 6309-6311 OCEAN AVENUE CONDOMINIUM



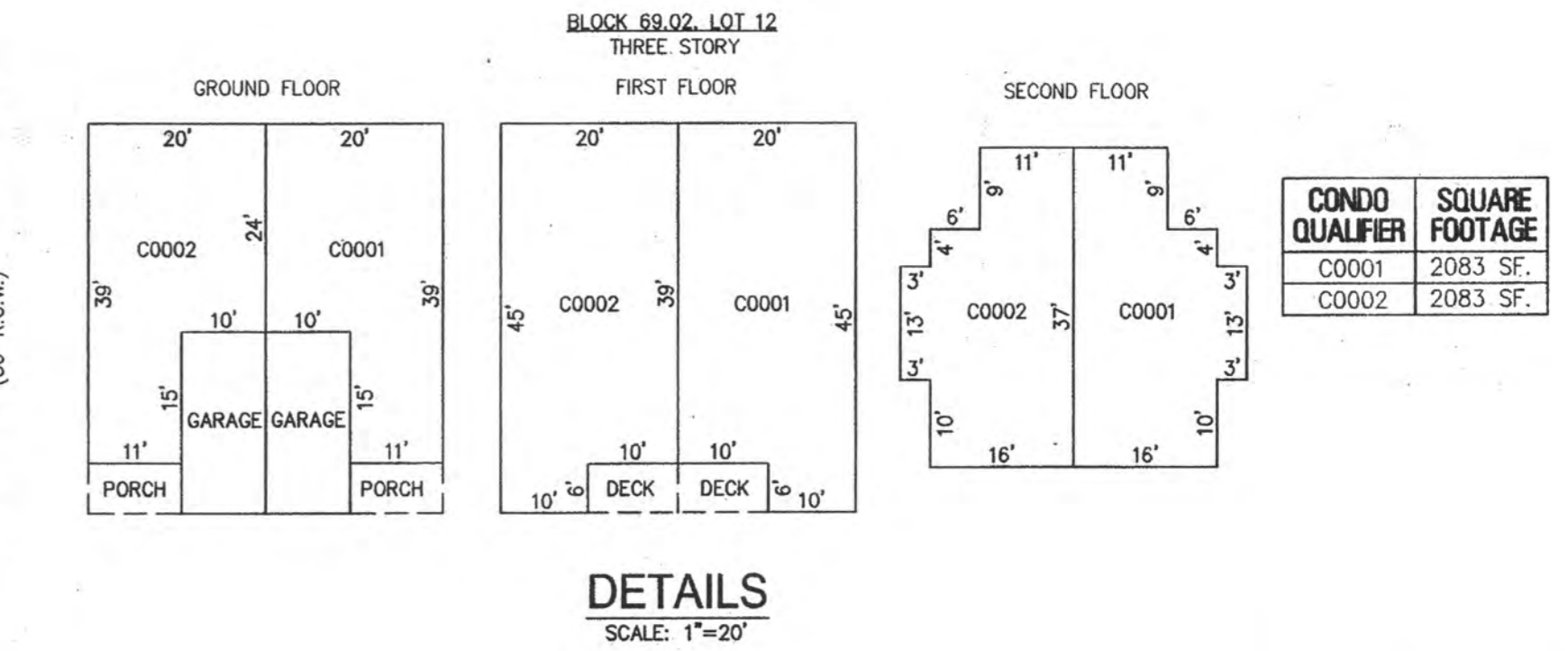
BLOCK 69.02, LOT 8
OCEAN VILLA 6317-6319 OCEAN AVENUE CONDOMINIUM



BLOCK 69.02, LOT 11
OCEAN VILLA 6305-6307 OCEAN AVENUE CONDOMINIUM



BLOCK 69.02, LOT 9
OCEAN VILLA 6313-6315 OCEAN AVENUE CONDOMINIUM



BLOCK 69.02, LOT 12
OCEAN VILLA 6301-6303 OCEAN AVENUE CONDOMINIUM

BLOCK 69.02, LOT 7
BLOCK 69.02, LOT 8
BLOCK 69.02, LOT 9
BLOCK 69.02, LOT 10
BLOCK 69.02, LOT 11
BLOCK 69.02, LOT 12
SEE SHEET 13

NEW JERSEY DEPARTMENT OF THE TREASURY
DIVISION OF TAXATION
APPROVED AS A TAX MAP PURSUANT TO THE AUTHORITY OF
N.J.S.A. 54-115 AND N.J.S.A. 54-90-1
FOR THE DIRECTOR, DIVISION OF TAXATION
Judy Miller, CPA
Shelly Kelly, CPA
DATE JUL 20 2016 SERIAL NO. 1070

TAX MAP
CITY OF VENTNOR
ATLANTIC COUNTY NEW JERSEY
SCALE: NOTED DATE: 2-19-2015
CHARLES E. ADAMSON NJ PROFESSIONAL LAND SURVEYOR LIC. NO. 42627
RV & W
REMINGTON, VERNICK & WALBERG ENGINEERS
24 GA 28048700
845 N. MAIN STREET, PLEASANTVILLE, NJ 08232
(609) 645-780, FAX (609) 645-7076
WEB SITE ADDRESS: WWW.RVW.COM
TO SHOW CONDITIONS AS OF 7-20-2016