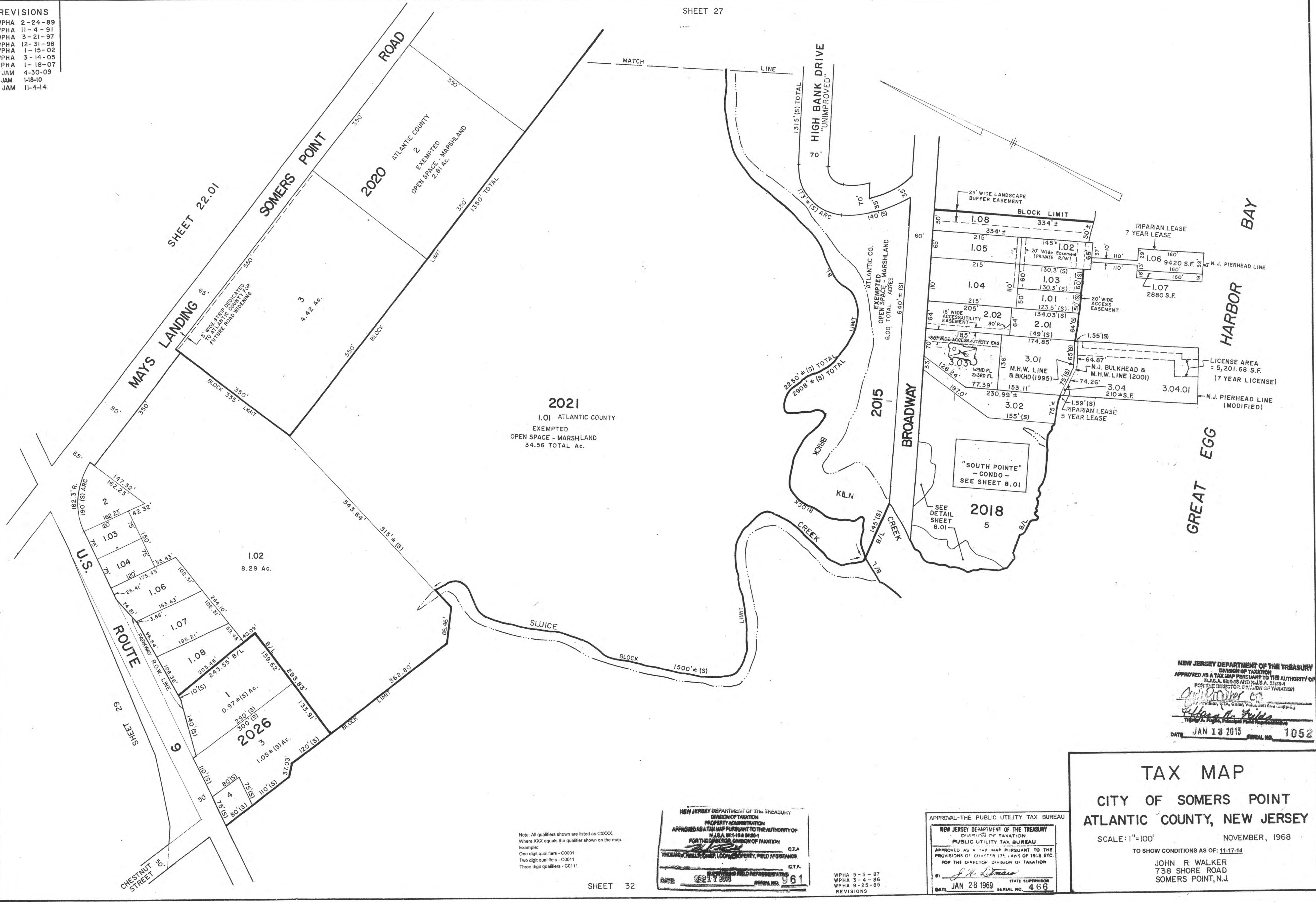


- REVISIONS
- WPHA 2-24-89
 - WPHA 11-4-91
 - WPHA 3-21-97
 - WPHA 12-31-98
 - WPHA 1-15-02
 - WPHA 3-14-05
 - WPHA 1-18-07
 - JAM 4-30-09
 - JAM 1-18-10
 - JAM 11-4-14

SHEET 27



2021
 1.01 ATLANTIC COUNTY
 EXEMPTED
 OPEN SPACE - MARSHLAND
 34.56 TOTAL Ac.

1.02
 8.29 Ac.

2026
 3
 1.05 ± (S) Ac.

"SOUTH POINTE"
 - CONDO -
 SEE SHEET 8.01

2018
 5

NEW JERSEY DEPARTMENT OF THE TREASURY
 DIVISION OF TAXATION
 APPROVED AS A TAX MAP PURSUANT TO THE AUTHORITY OF
 N.J.S.A. 52:18 AND N.J.S.A. 52:50-4
 FOR THE DIRECTOR, DIVISION OF TAXATION
 DATE JAN 18 2015 SERIAL NO. 1052

Note: All qualifiers shown are listed as C00XX.
 Where XXX equals the qualifier shown on the map.
 Example:
 One digit qualifiers - C0001
 Two digit qualifiers - C0011
 Three digit qualifiers - C0111

NEW JERSEY DEPARTMENT OF THE TREASURY
 DIVISION OF TAXATION
 PROPERTY ADMINISTRATION
 APPROVED AS A TAX MAP PURSUANT TO THE AUTHORITY OF
 N.J.S.A. 52:18 & 52:50-4
 FOR THE DIRECTOR, DIVISION OF TAXATION
 THOMAS A. HILL, CHIEF, LOCAL PROPERTY, FIELD ASSISTANCE
 DATE 02/17/15 SERIAL NO. 961

WPHA 5-5-87
 WPHA 3-4-86
 WPHA 9-25-85
 REVISIONS

APPROVAL - THE PUBLIC UTILITY TAX BUREAU
 NEW JERSEY DEPARTMENT OF THE TREASURY
 DIVISION OF TAXATION
 PUBLIC UTILITY TAX BUREAU
 APPROVED AS A TAX MAP PURSUANT TO THE
 PROVISIONS OF CHAPTER 174, LAWS OF 1913, ETC.
 FOR THE DIRECTOR, DIVISION OF TAXATION
 BY J.H. Dumas STATE SUPERVISOR
 DATE JAN 28 1969 SERIAL NO. 466

TAX MAP
 CITY OF SOMERS POINT
 ATLANTIC COUNTY, NEW JERSEY
 SCALE: 1"=100'
 NOVEMBER, 1968
 TO SHOW CONDITIONS AS OF: 11-17-14
 JOHN R WALKER
 738 SHORE ROAD
 SOMERS POINT, N.J.

SHEET 32