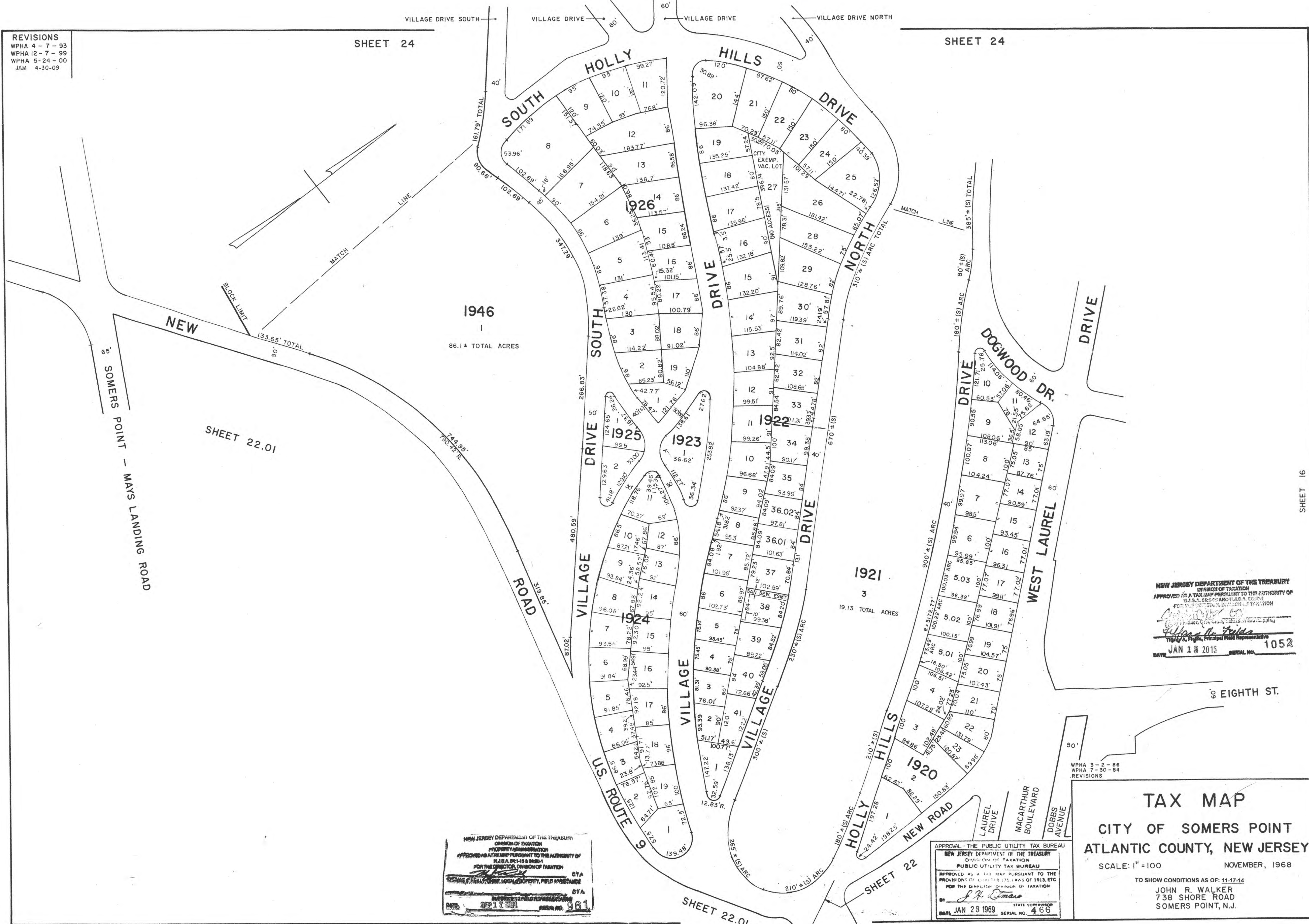


REVISIONS  
 WPHA 4-7-93  
 WPHA 12-7-99  
 WPHA 5-24-00  
 JAM 4-30-09

SHEET 24

SHEET 24



NEW

SOMERS POINT - MAYS LANDING ROAD

SHEET 22.01

1946  
86.1\* TOTAL ACRES

1921  
19.13 TOTAL ACRES

NEW JERSEY DEPARTMENT OF THE TREASURY  
 DIVISION OF TAXATION  
 APPROVED AS A TAX MAP PURSUANT TO THE AUTHORITY OF  
 N.J.S.A. 54:1-19 & 54:1-20  
 FOR THE DIRECTOR, DIVISION OF TAXATION  
*Thomas A. Fields*  
 Thomas A. Fields, Principal Field Representative  
 DATE JAN 18 2015 SERIAL NO. 1052

60' EIGHTH ST.

WPHA 3-2-86  
 WPHA 7-30-84  
 REVISIONS

NEW JERSEY DEPARTMENT OF THE TREASURY  
 DIVISION OF TAXATION  
 PROPERTY ADMINISTRATION  
 APPROVED AS A TAX MAP PURSUANT TO THE AUTHORITY OF  
 N.J.S.A. 54:1-19 & 54:1-20  
 FOR THE DIRECTOR, DIVISION OF TAXATION  
*Thomas A. Fields*  
 Thomas A. Fields, Principal Field Representative  
 DATE SEP 17 2011 SERIAL NO. 361

APPROVAL - THE PUBLIC UTILITY TAX BUREAU  
 NEW JERSEY DEPARTMENT OF THE TREASURY  
 DIVISION OF TAXATION  
 PUBLIC UTILITY TAX BUREAU  
 APPROVED AS A TAX MAP PURSUANT TO THE  
 PROVISIONS OF N.J.S.A. 54:1-19 & 54:1-20, ETC  
 FOR THE DIRECTOR, DIVISION OF TAXATION  
*J. H. Dumas*  
 J. H. Dumas, State Supervisor  
 DATE JAN 28 1969 SERIAL NO. 466

TAX MAP  
 CITY OF SOMERS POINT  
 ATLANTIC COUNTY, NEW JERSEY  
 SCALE: 1" = 100 NOVEMBER, 1968

TO SHOW CONDITIONS AS OF: 11-17-14  
 JOHN R. WALKER  
 738 SHORE ROAD  
 SOMERS POINT, N.J.

SHEET 16