

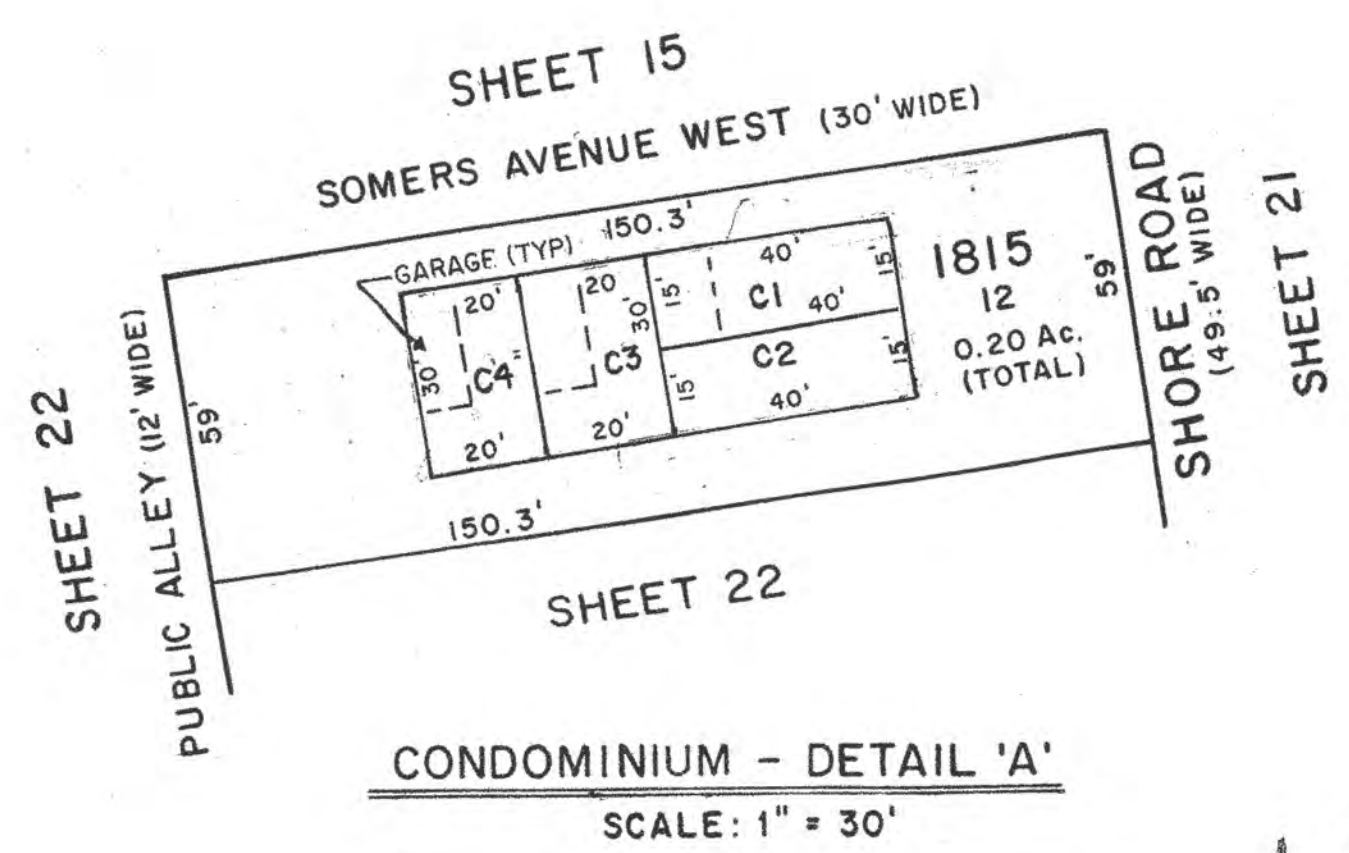
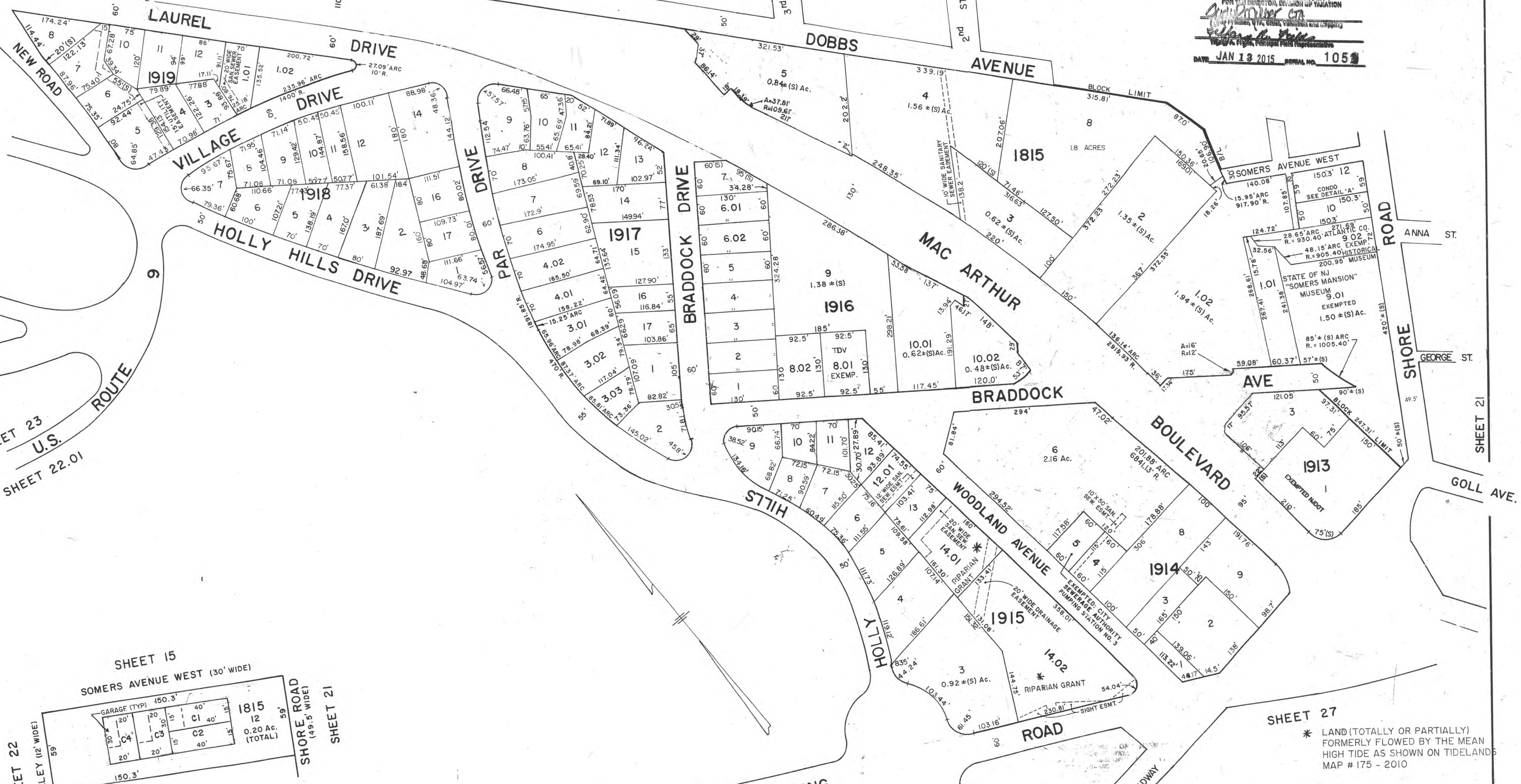
REVISIONS

WPHA 10-31-88
WPHA 8-15-89
WPHA 6-4-93
WPHA 12-12-95
WPHA 4-2-97
WPHA 3-14-05
WPHA 1-18-07
JAM 4-29-09
JAM 1-18-10
JAM 2-23-12
JAM 11-13-14

NEW JERSEY DEPARTMENT OF THE TREASURY  
 DIVISION OF TAXATION  
 APPROVED AS A TAX MAP PURSUANT TO THE AUTHORITY OF  
 N.J.A.C. 17:27 AND N.J.A.C. 17:28  
 FOR THE CITY OF SOMERS POINT  
 DATE JAN 13 2015 SERIAL NO. 105

SHEET 16 SHEET 15

SHEET 23  
 U.S. ROUTE  
 SHEET 22.01



NEW JERSEY DEPARTMENT OF THE TREASURY  
 DIVISION OF TAXATION  
 PROPERTY ADMINISTRATION  
 APPROVED AS A TAX MAP PURSUANT TO THE AUTHORITY OF  
 N.J.A.C. 17:27 AND N.J.A.C. 17:28  
 FOR THE CITY OF SOMERS POINT  
 THOMAS J. HILL, CHIEF, LOCAL PROPERTY FIELD REPRESENTATIVE  
 DATE: SEP 17 2014 SERIAL NO. 961

SHEET 22.01  
 SOMERS POINT - MAYS LANDING  
 SHEET 27

WPHA 4-24-86  
 WPHA 6-7-85  
 WPHA 11-28-84  
 WPHA 11-8-82  
 REVISIONS

Note: All qualifiers shown are listed as C0XXX,  
 Where XXX equals the qualifier shown on the map.  
 Example:  
 One digit qualifiers - C0001  
 Two digit qualifiers - C0011  
 Three digit qualifiers - C0111

APPROVAL - THE PUBLIC UTILITY TAX BUREAU  
 NEW JERSEY DEPARTMENT OF THE TREASURY  
 DIVISION OF TAXATION  
 PUBLIC UTILITY TAX BUREAU  
 APPROVED AS A TAX MAP PURSUANT TO THE  
 PROVISIONS OF CHAPTER 175, LAWS OF 1913, ETC.  
 FOR THE DIRECTOR, DIVISION OF TAXATION  
 J. P. [Signature]  
 STATE SUPERVISOR  
 DATE JAN 28 1969 SERIAL NO. 466

TAX MAP  
 CITY OF SOMERS POINT  
 ATLANTIC COUNTY, NEW JERSEY  
 SCALE: 1" = 100'  
 NOVEMBER, 1968  
 TO SHOW CONDITIONS AS OF: 11-17-14  
 JOHN R. WALKER  
 738 SHORE ROAD  
 SOMERS POINT, N.J.

\* LAND (TOTALLY OR PARTIALLY)  
 FORMERLY FLOWED BY THE MEAN  
 HIGH TIDE AS SHOWN ON TIDELANDS  
 MAP # 175 - 2010