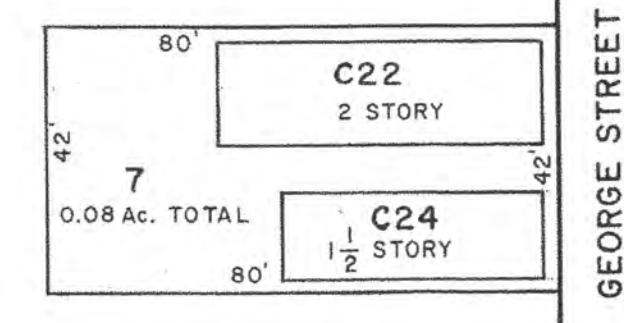
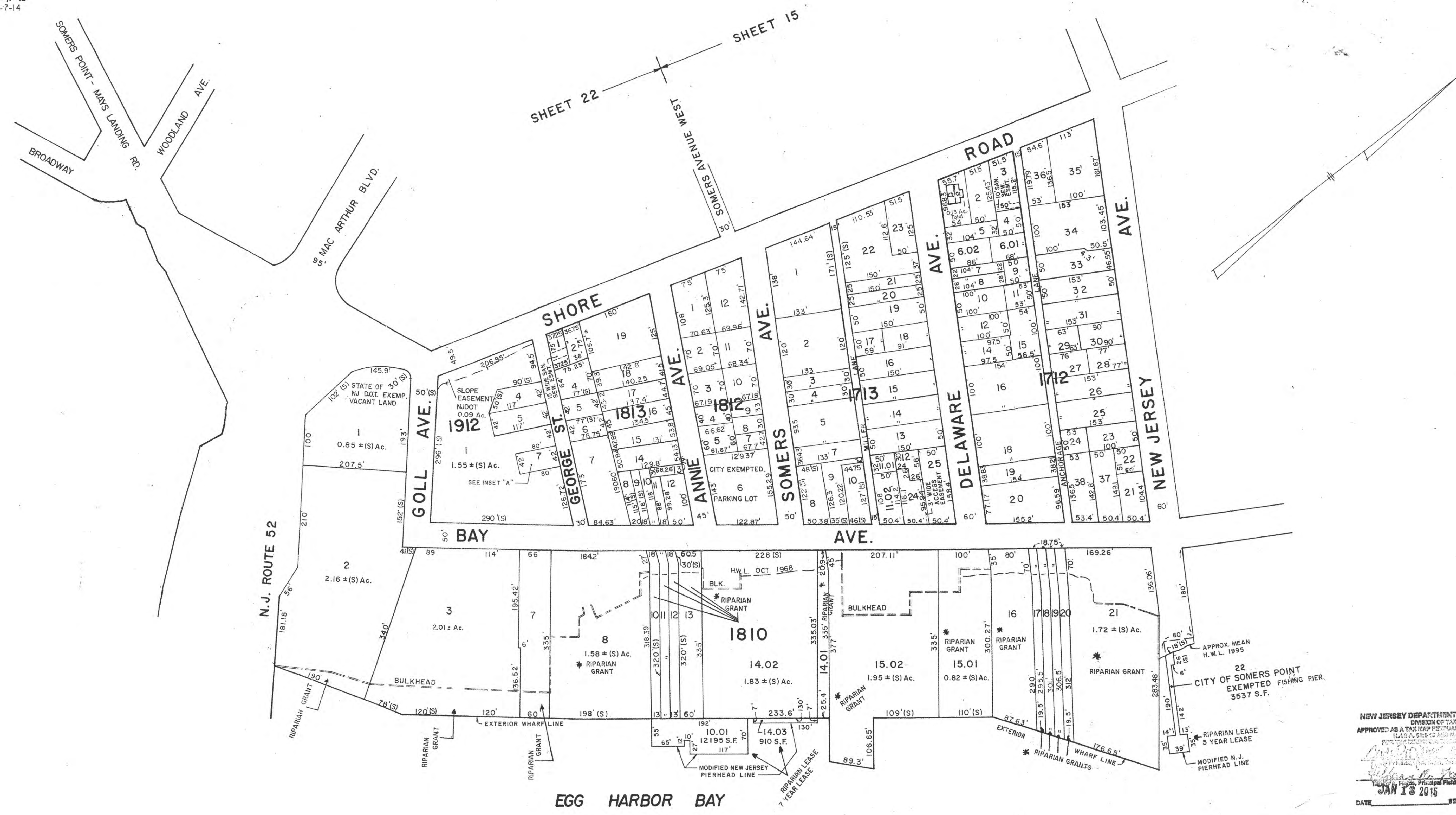


REVISIONS
 WPHA 7-26-90
 WPHA 10-15-91
 WPHA 4-6-93
 WPHA 3-18-96
 WPHA 4-2-97
 JAM 4-6-09
 JAM 4-29-09
 JAM 5-11-12
 JAM 11-7-14

SHEET 27

SHEET 14



INSET "A"
 SCALE: 1" = 30'

* LAND (TOTALLY OR PARTIALLY) FORMERLY FLOWED BY THE MEAN HIGH TIDE AS SHOWN ON TIDELANDS MAP # 175 - 2010

Note: All qualifiers shown are listed as C0000. Where XXX equals the qualifier shown on the map. Example: One digit qualifiers - C0001 Two digit qualifiers - C0011 Three digit qualifiers - C0111

NEW JERSEY DEPARTMENT OF THE TREASURY
 DIVISION OF TAXATION
 PROPERTY ADMINISTRATION
 APPROVED AS A TAX MAP PURSUANT TO THE AUTHORITY OF N.J.A.C. 17:27 & 17:28 FOR THE DIRECTOR, DIVISION OF TAXATION
 THOMAS J. KELLY, CHIEF, PROPERTY FIELD ASSISTANCE
 DATE: 11/17/10 SERIAL NO. 961

WPHA 2-28-86
 WPTM 9-13-82
 REVISIONS

APPROVAL - THE PUBLIC UTILITY TAX BUREAU
 NEW JERSEY DEPARTMENT OF THE TREASURY
 DIVISION OF TAXATION
 PUBLIC UTILITY TAX BUREAU
 APPROVED AS A TAX MAP PURSUANT TO THE PROVISIONS OF CHAPTER 175 LAWS OF 1913, ETC. FOR THE DIRECTOR, DIVISION OF TAXATION
 BY: J. R. Walker
 DATE: JAN 28 1969 STATE SUPERVISOR SERIAL NO. 466

TAX MAP
CITY OF SOMERS POINT
ATLANTIC COUNTY, NEW JERSEY
 SCALE: 1" = 100' NOVEMBER, 1968
 TO SHOW CONDITIONS AS OF: 11-17-14
 JOHN R. WALKER
 738 SHORE ROAD
 SOMERS POINT, N.J.

NEW JERSEY DEPARTMENT OF THE TREASURY
 DIVISION OF TAXATION
 APPROVED AS A TAX MAP PURSUANT TO THE AUTHORITY OF N.J.A.C. 17:27 & 17:28 FOR THE DIRECTOR, DIVISION OF TAXATION
 THOMAS J. KELLY, CHIEF, PROPERTY FIELD ASSISTANCE
 DATE: JAN 13 2015 SERIAL NO. 1052

APPROX. MEAN H.W.L. 1995
 CITY OF SOMERS POINT EXEMPTED FISHING PIER. 3537 S.F.
 RIPARIAN LEASE 5 YEAR LEASE
 MODIFIED N.J. PIERHEAD LINE